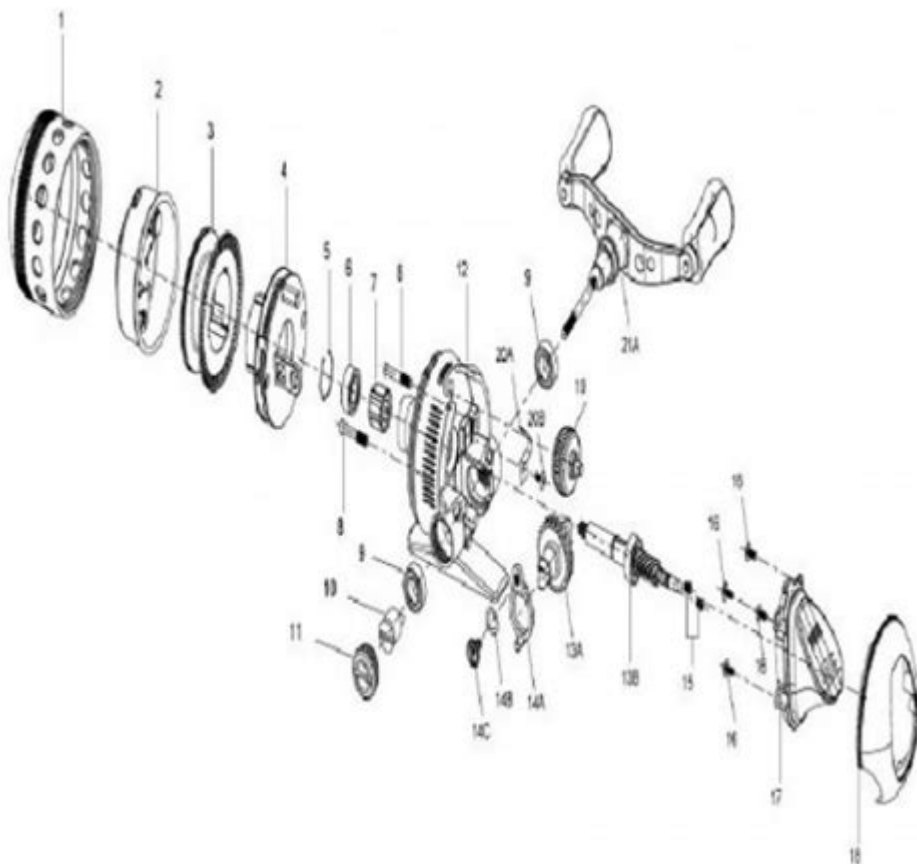


# Zebco 202 Parts Diagram



Zebco 202 parts diagram is essential for anyone who owns or maintains this popular fishing reel. The Zebco 202 is well-known for its durability, ease of use, and affordability, making it a favorite among novice and experienced anglers alike. Understanding the intricacies of its components can enhance your fishing experience, enabling you to troubleshoot issues and perform necessary repairs. In this article, we will delve into the components of the Zebco 202, how to interpret its parts diagram, and maintenance tips to keep your reel in top condition.

## Overview of the Zebco 202 Reel

The Zebco 202 is a spincast reel designed for simplicity and reliability. It is particularly favored for its push-button design, making it accessible for anglers of all ages. The reel typically features a metal housing, a smooth drag system, and a gear ratio that allows for efficient retrieval of line. Understanding the parts that make up the Zebco 202 is crucial for any fishing enthusiast looking to maximize their equipment's performance.

## Key Features of the Zebco 202

- Push-Button Casting: The Zebco 202 is equipped with a user-friendly push-button mechanism, simplifying the casting process.
- Durable Construction: Made with high-quality materials, the reel is designed to withstand the rigors of fishing.
- Smooth Drag System: The drag system allows users to adjust resistance, ensuring a seamless experience when reeling in fish.
- Easy Maintenance: The design of the reel allows for straightforward disassembly and maintenance.

## Understanding the Parts Diagram

A Zebco 202 parts diagram provides a visual representation of all the components that make up the reel. This diagram is an invaluable tool for both novice and experienced users, allowing them to identify parts for repairs, replacements, or upgrades.

## Components of the Zebco 202

The Zebco 202 is made up of several key components, each serving a specific function. Below is a breakdown of these parts as typically represented in a parts diagram:

1. Reel Housing: The outer casing that protects internal components and provides structural integrity.
2. Spool: Holds the fishing line and is responsible for line retrieval.
3. Drag Knob: Allows the angler to adjust the tension on the line.
4. Handle: The part that the user turns to retrieve the line.
5. Gear System: Composed of various gears that facilitate the movement of the spool.
6. Push Button: Engages the casting mechanism; a crucial feature of the Zebco design.
7. Line Guide: Directs the line onto the spool during retrieval.
8. Anti-Reverse Switch: Prevents the handle from turning backward, ensuring that the fish doesn't pull the line back out.
9. Ball Bearings: Provide smooth operation and reduce friction in the gear system.
10. Foot: The base of the reel that attaches it to the fishing rod.

## Interpreting the Parts Diagram

When looking at a Zebco 202 parts diagram, you will notice that each component is labeled with a part number. This numbering system is essential

for ordering replacement parts or referring to a service manual. Here's how to interpret the diagram effectively:

- Identify Each Part: Start by matching the labeled parts in the diagram with the physical components of your reel.
- Note Part Numbers: Write down the part numbers associated with any components that require replacement.
- Understand Assembly: Observe how parts fit together, which can assist in reassembly after maintenance or repair.
- Check for Common Issues: Some diagrams may highlight common trouble areas, helping you identify potential issues quickly.

## Common Repairs and Maintenance Tips

Maintaining your Zebco 202 reel is crucial for ensuring its longevity and performance. Here are some common repairs and maintenance tips:

### Cleaning the Reel

Regular cleaning can prevent dirt and grime from accumulating, which can affect the reel's performance. Follow these steps:

1. Disassemble the Reel: Carefully remove the handle and drag knob, then take off the side plate to access internal components.
2. Clean Components: Use a soft brush or cloth to remove dirt. For tough grime, consider using a mild soap solution.
3. Dry Thoroughly: Ensure all parts are completely dry before reassembling to prevent rust.
4. Re-lubricate: Apply a light fishing reel oil to moving parts to ensure smooth operation.

### Replacing Worn Parts

Over time, certain components may wear out. Commonly replaced parts include:

- Spool: If it becomes damaged or cracked.
- Drag Knob: If it fails to adjust tension properly.
- Handle: If it becomes loose or difficult to turn.

To replace a part, consult the parts diagram to find the correct part number and follow the disassembly procedure.

## Adjusting the Drag System

The drag system is vital for controlling the tension of the line. If you notice that the drag is too tight or too loose:

1. Adjust the Drag Knob: Rotate it to increase or decrease tension.
2. Test Under Load: Use a scale or try reeling in a heavy object to check if the drag is functioning correctly.

## Storing the Reel

Proper storage can extend the life of your Zebco 202. Here are some tips:

- Store in a Cool, Dry Place: Avoid excessive heat and humidity.
- Avoid Direct Sunlight: Prolonged exposure can damage the reel's finish.
- Leave the Line Loose: Loosen the line tension to prevent it from becoming memory-prone.

## Conclusion

Understanding the Zebco 202 parts diagram is essential for any angler looking to maintain or repair their fishing reel. Familiarizing yourself with the various components and how they interconnect can significantly enhance your fishing experience. Regular maintenance, cleaning, and timely replacements will ensure your Zebco 202 reel operates smoothly for years to come. By following the guidelines and tips outlined in this article, you can keep your Zebco 202 in optimal condition, ready for your next fishing adventure.

## Frequently Asked Questions

### What is a Zebco 202 parts diagram used for?

A Zebco 202 parts diagram is used to identify and illustrate the various components of the Zebco 202 fishing reel, helping users understand how to assemble, disassemble, and repair their reels.

### Where can I find a Zebco 202 parts diagram?

You can find a Zebco 202 parts diagram on the official Zebco website, in fishing forums, or through various online retailers that sell Zebco products.

### What are the main components shown in the Zebco 202

## **parts diagram?**

The main components typically include the reel body, spool, handle, anti-reverse mechanism, drag system, and various screws and washers.

## **How can I use the Zebco 202 parts diagram for repairs?**

You can use the Zebco 202 parts diagram to locate specific parts that need replacement or repair and to understand how to properly reassemble the reel after maintenance.

## **Is the Zebco 202 parts diagram available in PDF format?**

Yes, many websites offer the Zebco 202 parts diagram in PDF format for easy downloading and printing.

## **Can I get replacement parts for my Zebco 202 using the parts diagram?**

Yes, the parts diagram can help you identify the specific parts you need, which you can then order from authorized dealers or online retailers.

## **What should I do if the parts diagram is unclear or incomplete?**

If the parts diagram is unclear, consider reaching out to Zebco customer service or visiting fishing forums where experienced users may provide additional insights.

## **Are there any videos available that explain the Zebco 202 parts diagram?**

Yes, many fishing enthusiasts post tutorial videos on platforms like YouTube, explaining how to use the Zebco 202 parts diagram for repairs and maintenance.

## **How often should I refer to the Zebco 202 parts diagram?**

You should refer to the Zebco 202 parts diagram whenever you perform maintenance, repairs, or if you encounter issues with the reel's functionality.

## **Is the Zebco 202 parts diagram the same for all**

## Zebco models?

No, the Zebco 202 parts diagram is specific to the Zebco 202 model; other models may have different components and configurations.

Find other PDF article:

<https://soc.up.edu.ph/64-frame/files?ID=CdA35-0736&title=vap-max-w3-kit-instructions.pdf>

## Zebco 202 Parts Diagram

### **Aiguille du Midi - Wikipedia, la enciclop...**

L'Aiguille du Midi (traducido al español como La Aguja del Mediodía) es una montaña del Macizo del Mont Blanc, ...

### **Teleférico de la Aiguille du Midi - Chamonix**

Desde la cima de sus 3777 m, la Aiguille du Midi y sus terrazas ofrecen una vista de 360° de los Alpes ...

### *Aiguille du Midi: viaje al techo de Chamonix*

L' Aiguille du Midi (en español la aguja del mediodía) es junto al Mont Blanc la montaña más famosa de los Alpes ...

### Teleférico al Mont Blanc - Entradas para subi...

Nov 11, 2013 · Subir al teleférico del Mont Blanc es una experiencia muy emocionante. Compra tus ...

### **Aiguille du midi - Rutas que molan**

Jul 24, 2022 · Durante más de 60 años, la icónica aguja de Chamonix, la L´Aiguille du Midi o Aguja del Medio día en ...

### Enabling macOS screen sharing (VNC) via command line - unix ...

Feb 7, 2017 · Enabling macOS screen sharing (VNC) via command line. 07 Feb 2017. unix-ninja. MacBook OS X System Administration Utilities. SSH into the box, or open a local terminal. ...

### **How to enable OS X screen sharing (VNC) through SSH?**

Nov 4, 2011 · Got this response on macOS Mojave: "Warning: macos 10.14 and later only allows control if Screen Sharing is enabled through System Preferences." - toralux Commented Aug ...

### Command line enable of VNC/Remote Management? - Apple ...

Jan 18, 2011 · If you enable Remote Management it will open ports 5900 and 3283 on that workstation. Port 5900 is the VNC Port and port 3283 is the special control port Apple add to ...

### *Start Mac VNC server from command line · GitHub*

Indeed the change of the vnc password doesn't work on the command line. But I have another particular behavior: when I enable VNC with the GUI, the remote access to the mac with ...

[macos - Is there a way to launch ScreenSharing from the Terminal ...](#)

Dec 2, 2010 · tell application "Screen Sharing" activate # start Screen Sharing if not running yet tell application "System Events" keystroke "a" using command down # this will cause the ...

[How to configure VNC services with macOS - TechTarget](#)

Jun 24, 2025 · MacOS also supports SSH and offers different configuration options. While SSH is a common remote access method, especially for administrators who are comfortable working ...

**How to Set Up VNC on Mac OS X - HogoNext**

May 29, 2025 · In this comprehensive guide, we'll journey deep into the world of VNC on Mac OS X, from its fundamental concepts to advanced configurations and crucial security ...

**vnc - Programatically enable Screen Sharing and Remote Login on macOS ...**

Feb 10, 2022 · I'm looking for a way to programatically enable Screen Sharing and Remote Login on macOS to help with automated provisioning of new machines. ... will be deprecated in ...

**How to enable Screen Sharing on Macs via Terminal · GitHub**

Dec 29, 2020 · Follow these steps to enable Screen Sharing via Terminal. Navigate to Applications | Utilities and launch Terminal. If you're working from a keyboard only, press ...

**Set up a computer running VNC software for Remote Desktop**

Install the VNC Server software and assign a VNC password on the client computer. Make sure the client's firewall has the VNC port open (TCP 5900). For more detailed instructions on steps ...

Explore our detailed Zebco 202 parts diagram for easy identification and replacement of components. Learn more to keep your fishing gear in top shape!

[Back to Home](#)