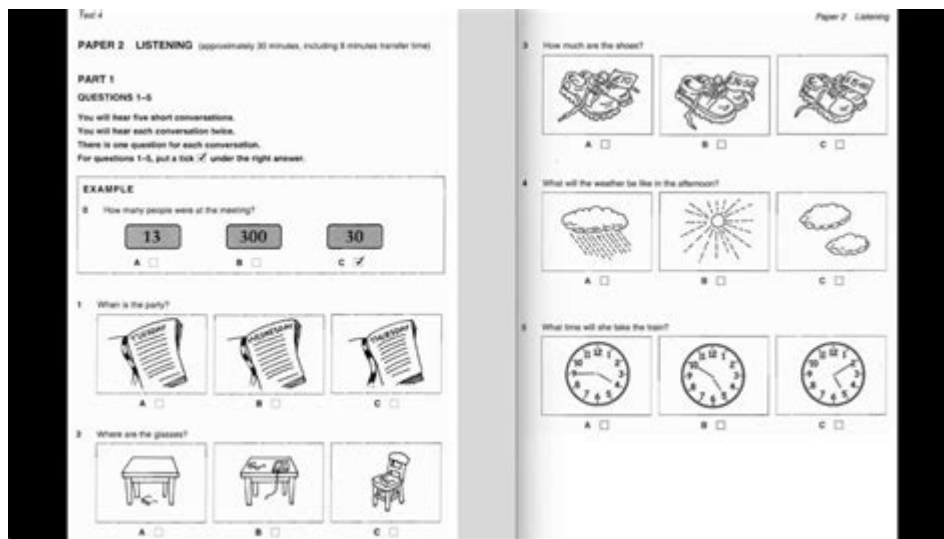


Workkeys Applied Technology Answers



WorkKeys Applied Technology Answers are essential for individuals preparing for the WorkKeys assessment, a key component in the National Career Readiness Certificate (NCRC) program. This assessment evaluates an individual's skills in various areas that are critical for success in the workplace. Applied Technology is one of the primary assessments within WorkKeys, designed to test a person's ability to understand and apply technology in a work setting. This article delves into the significance of the Applied Technology assessment, how to prepare for it, and the types of questions and answers that candidates may encounter.

Understanding WorkKeys Applied Technology Assessment

The WorkKeys Applied Technology assessment measures a candidate's proficiency in using tools, equipment, and technology to perform tasks. It assesses one's ability to understand and apply information from various technological sources, which is crucial in today's increasingly digital workplace.

Components of the Applied Technology Assessment

The assessment typically covers the following areas:

1. **Tools and Equipment:** Understanding the operation and maintenance of tools and machinery.
2. **Technology Applications:** Using software and hardware to complete tasks.
3. **Problem Solving:** Analyzing situations and determining the best technological solutions.
4. **Safety and Maintenance:** Knowledge of safety standards and maintenance procedures for various technologies.

Importance of Applied Technology Skills

In an era where technology permeates every aspect of business and industry, having strong applied technology skills is crucial for several reasons:

- **Employability:** Employers often seek candidates who can effectively use technology in their roles. Proficiency in applied technology can significantly enhance job prospects.
- **Career Advancement:** Demonstrating strong applied technology skills can lead to promotions and additional responsibilities, as many positions require ongoing technological adaptation.
- **Workplace Efficiency:** Employees who can seamlessly integrate technology into their workflows tend to be more productive and efficient.

Preparing for the WorkKeys Applied Technology Assessment

Preparation for the WorkKeys Applied Technology assessment is essential to achieve a high score. Here are some effective strategies:

1. Familiarize Yourself with the Test Format

Understanding the structure and types of questions on the Applied Technology assessment can help reduce anxiety and improve performance. The test typically includes a mix of multiple-choice questions and practical scenarios.

2. Utilize Study Materials

Various study materials can aid in preparation, including:

- **Official WorkKeys Practice Tests:** These tests simulate the actual assessment and provide insights into the types of questions that may appear.
- **Online Resources:** Websites and forums dedicated to career readiness often provide tips, tricks, and sample questions.
- **Books and Guides:** There are numerous books available that focus specifically on WorkKeys assessments.

3. Hands-On Practice

Engaging in hands-on practice with technology is one of the best ways to prepare. This can include:

- Working with real tools and equipment relevant to your industry.
- Completing online tutorials for software applications commonly used in your field.
- Participating in workshops or training courses that focus on applied technology skills.

4. Join Study Groups

Collaborating with others can enhance your understanding of applied technology. Consider joining study groups where you can share knowledge, resources, and strategies.

Types of Questions in the Applied Technology Assessment

The Applied Technology assessment includes a variety of question types that test different competencies. Here are some common question formats:

1. Scenario-Based Questions

These questions present a workplace scenario and ask you to choose the best course of action using technology. For example:

- Scenario: You need to fix a malfunctioning machine. What steps would you take to diagnose the problem?
- Answer Options:
 - A. Consult the manual for troubleshooting steps.
 - B. Use trial and error to fix the machine.
 - C. Ignore the issue until it becomes more severe.

Correct Answer: A. Consulting the manual demonstrates an understanding of the importance of following established procedures.

2. Tool Identification Questions

These questions require you to identify the correct tool or piece of equipment needed for a specific task. For example:

- Question: Which tool is used to measure the diameter of a hole?

Possible Answers:

- A. Caliper
- B. Ruler
- C. Thermometer

Correct Answer: A. Caliper.

3. Technology Application Questions

These questions focus on the use of software or systems:

- Question: Which software would you use to create a presentation?

Possible Answers:

- A. Microsoft Word

- B. Microsoft PowerPoint
- C. Microsoft Excel

Correct Answer: B. Microsoft PowerPoint.

Common Misconceptions About the Applied Technology Assessment

As candidates prepare for the WorkKeys Applied Technology assessment, several misconceptions may arise:

1. It's Just About Technical Knowledge

While technical knowledge is important, the assessment also evaluates problem-solving skills, critical thinking, and the ability to apply knowledge in practical scenarios.

2. Only Certain Fields Require Applied Technology Skills

In reality, almost every industry today utilizes technology in some form. Whether it's healthcare, manufacturing, or education, applied technology skills are universally valuable.

3. You Can't Prepare for the Assessment

Preparation is key. With the right study materials and practice, candidates can significantly improve their scores and confidence levels.

Conclusion

In conclusion, **WorkKeys Applied Technology Answers** are pivotal for individuals seeking to validate their technological competencies in the workforce. By understanding the assessment's structure, preparing effectively, and familiarizing themselves with the types of questions asked, candidates can enhance their chances of success. As technology continues to evolve, the importance of applied technology skills will only increase, making the WorkKeys assessment an essential step towards career advancement and employability in today's job market.

Frequently Asked Questions

What is WorkKeys Applied Technology?

WorkKeys Applied Technology is an assessment that measures an individual's ability to use technology effectively in the workplace, focusing on skills like problem-solving, troubleshooting, and understanding technical systems.

How can I prepare for the WorkKeys Applied Technology assessment?

You can prepare for the WorkKeys Applied Technology assessment by studying relevant materials, taking practice tests, and familiarizing yourself with the types of technology and tools used in your field.

What types of skills are assessed in WorkKeys Applied Technology?

Skills assessed include the ability to interpret technical information, operate equipment, troubleshoot problems, and use software tools to complete tasks effectively.

Is there a passing score for the WorkKeys Applied Technology assessment?

Yes, each employer may set a different passing score based on their specific needs and the roles for which they are hiring. Generally, scores are reported on a scale from 3 to 7.

Where can I find practice tests for WorkKeys Applied Technology?

Practice tests for WorkKeys Applied Technology can be found on the official ACT WorkKeys website, through educational institutions, or by purchasing study guides from various educational publishers.

How is the WorkKeys Applied Technology assessment administered?

The assessment is usually administered in a computer-based format at designated testing centers, where you will answer a series of questions related to applied technology skills.

Who should take the WorkKeys Applied Technology assessment?

Individuals seeking employment in technical fields, those looking to demonstrate their technology skills to employers, or students preparing to enter the workforce can benefit from taking the assessment.

What is the significance of WorkKeys Applied Technology scores for employers?

Employers use WorkKeys Applied Technology scores to assess potential employees' technical competencies, ensuring they have the necessary skills to perform their job functions effectively.

Find other PDF article:

<https://soc.up.edu.ph/14-blur/files?dataid=SZj29-4739&title=consumer-behavior-hoyer-macinnis.pdf>

Workkeys Applied Technology Answers

Google

Search the world's information, including webpages, images, videos and more. Google has many special features to help you find exactly what you're looking for.

Google

Search the world's information, including webpages, images, videos and more. Google has many special features to help you find exactly what you're looking for.

Navegador web Google Chrome

Con las funciones inteligentes de Google, ahora es más simple, seguro y rápido que nunca.

Inicia sesión: Cuentas de Google - Google Accounts

Utiliza tu cuenta de Google. Correo electrónico o teléfono ¿Has olvidado tu correo electrónico? Escribe el texto que escuches o veas ¿No es tu ordenador? Usa una ventana de navegación ...

Google Images

Google Images. The most comprehensive image search on the web.

Google Cuenta

En tu cuenta de Google puedes ver y gestionar tu información, actividad, opciones de seguridad y preferencias de privacidad para mejorar tu experiencia en Google.

Imágenes de Google

Imágenes de Google. La búsqueda de imágenes más integral de Internet.

Google Translate

Google's service, offered free of charge, instantly translates words, phrases, and web pages between English and over 100 other languages.

Información de contacto - Google

En nuestro Centro de asistencia, encontrará mucha información recientemente actualizada sobre la búsqueda y las capacidades especiales de Google, y además una manera rápida de enviarnos ...

Google Cuenta

En la Cuenta de Google, puedes ver y administrar tu información, actividad, opciones de seguridad y preferencias de privacidad para que Google funcione mejor para ti.

Amazon.com: Amazon Prime

Get the largest catalog of ad-free top podcasts and shuffle play any artist, album, or playlist on Amazon Music. Prime Gaming Get games, a Twitch channel subscription, and more gaming benefits every month.

Amazon Prime Benefits & Membership Details - Amazon ...

Discover the perks of Amazon Prime membership, including fast and free shipping, exclusive deals, streaming, and more. Learn about Amazon Prime benefits and sign up today!

Amazon.com: : All Departments

On Prime Video, customers can find their favorite movies, series, documentaries, and live sports, including Amazon MGM Studios-produced series and movies; licensed fan favorites; and programming from partners such as Max, Crunchyroll and MGM+ via Prime Video Channels add-on subscriptions.

Amazon.com: Amazon Prime

What is Prime Access, and how does it differ from the full-price Prime membership? Prime Access is a discounted version of the Prime membership, available to eligible government assistance recipients or income-verified customers.

Amazon.com: Amazon Prime

Get exclusive Prime savings at Amazon Fresh and Whole Foods Market, in store or online.

Amazon.com Sign up for Prime Video

Enjoy exclusive Amazon Originals as well as popular movies and TV shows. Watch anytime, anywhere. Start your free trial.

Amazon.com

Manage your Amazon account settings, orders, payments, and preferences for a personalized shopping experience.

Watch Included with Prime on Prime Video - amazon.com

Subscribe to Included with Prime on Prime Video for hit series, blockbuster movies, and more - all in one app.

Prime Video: Watch movies, TV shows, sports, and live TV

Stream popular movies, TV shows, sports, and live TV included with Prime, and even more with add-on subscriptions. Watch anywhere, anytime.

Your Account - amazon.com

Manage your Amazon account settings, orders, and preferences conveniently in one place.

Unlock your potential with our comprehensive guide on WorkKeys Applied Technology answers. Discover how to ace your assessment and boost your career. Learn more!

[Back to Home](#)