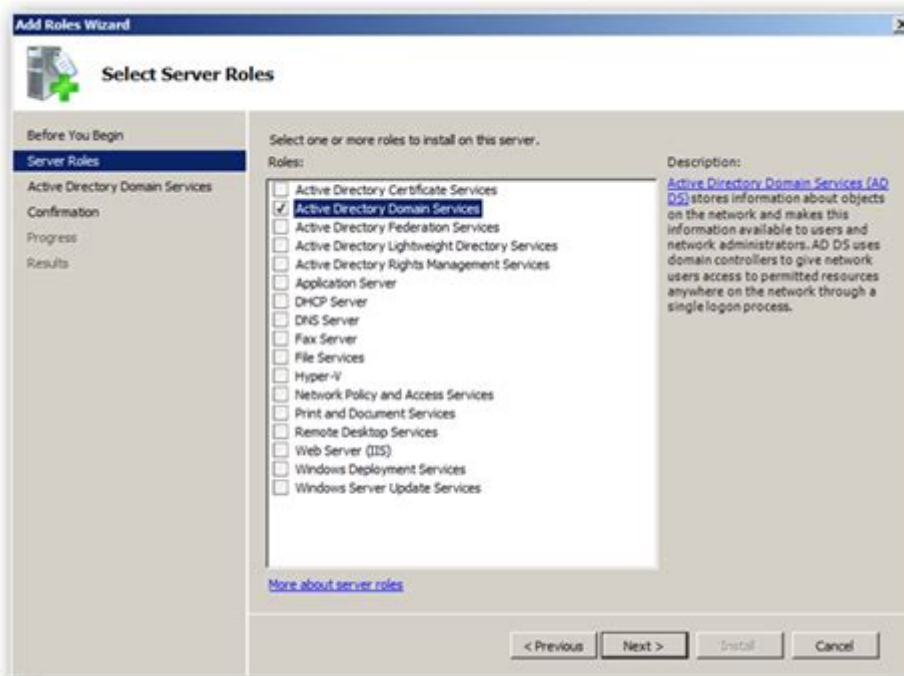


Windows Server 2008 Active Directory Configuration Answers



Windows Server 2008 Active Directory Configuration Answers are crucial for IT professionals and system administrators tasked with managing and maintaining a Windows Server environment. Active Directory (AD) is a directory service developed by Microsoft for Windows domain networks. It is a vital component in network management, offering services such as directory services, authentication, policy enforcement, and more. This article will provide a comprehensive guide to configuring Active Directory in Windows Server 2008, along with answers to common configuration questions.

Understanding Active Directory

Active Directory is more than just a database; it's a framework for managing permissions and access to network resources. It allows administrators to create and manage domains, users, and objects within a network.

Key Components of Active Directory

1. Domain: A logical grouping of network objects (users, computers, etc.) that share the same AD database.
2. Domain Controller: A server that hosts the AD database and responds to authentication requests.
3. Organizational Units (OUs): Containers used to organize users, groups, and computers in a domain.
4. Sites: Physical locations within a network where domain controllers are located; helps in replication and managing bandwidth.

5. Forest: A collection of one or more domains sharing a common AD schema.

Prerequisites for Active Directory Installation

Before configuring Active Directory on Windows Server 2008, ensure you meet the following prerequisites:

- A server running Windows Server 2008.
- Static IP address configuration.
- Administrative access to the server.
- A clear naming convention for the domain.

Installation Steps for Active Directory

Follow these steps to install Active Directory Domain Services (AD DS):

1. Open Server Manager: Click on the Start menu, select Administrative Tools, and then click on Server Manager.
2. Add Roles: In Server Manager, click on "Roles" and then "Add Roles".
3. Role Selection: Choose "Active Directory Domain Services" from the list and click "Next".
4. Role Services: Review the role services and click "Next".
5. Confirm Installation: Check the installation options and click "Install".
6. Post-Installation Tasks: Once the installation is complete, click on "Close".

Configuring Active Directory Domain Services

After successfully installing AD DS, the next step is to configure it.

Promoting the Server to a Domain Controller

1. Open the AD DS Configuration Wizard: In Server Manager, click on the link to promote the server to a domain controller.
2. Deployment Configuration: Choose whether to create a new domain in a new forest, add a domain controller to an existing domain, or create a new domain tree.
3. Domain Information: Enter the name for your new domain (e.g., mycompany.local).
4. Forest Functional Level: Select the appropriate forest functional level (Windows Server 2008 is recommended for new deployments).
5. Domain Controller Options: Choose options such as DNS server and Global Catalog. It's common to select both.
6. Directory Services Restore Mode (DSRM) Password: Set a password for DSRM and click "Next".
7. Review Selections: Ensure all settings are correct, then click "Next" and "Install".

Verification of Active Directory Installation

After the server has been promoted to a domain controller, verify the installation:

- Check Event Viewer: Look for any errors or warnings in the Event Viewer related to Active Directory.
- Use Active Directory Users and Computers: Open this tool to confirm the domain structure and user accounts are functioning correctly.

Common Active Directory Configuration Questions and Answers

Here are some frequently asked questions regarding Active Directory configuration:

1. What is the difference between a domain and a workgroup?
 - A domain is a centralized administration model where network resources are managed through Active Directory, while a workgroup is a peer-to-peer model without centralized control.
2. What is a Global Catalog?
 - A Global Catalog is a distributed data repository that provides a searchable, partial representation of every object in every domain within a multi-domain Active Directory forest.
3. How can I reset a user password in Active Directory?
 - Right-click on the user account in Active Directory Users and Computers, select "Reset Password", and follow the prompts.
4. What are Group Policies and how are they configured?
 - Group Policies are used to enforce settings and configurations for users and computers within a domain. They can be configured through the Group Policy Management Console (GPMC).
5. How can I delegate control of an OU?
 - Right-click on the Organizational Unit (OU) in Active Directory Users and Computers, select "Delegate Control", and follow the wizard to assign permissions to specific users or groups.

Best Practices for Active Directory Management

To ensure a secure and efficient Active Directory environment, consider the following best practices:

- Regular Backups: Schedule regular backups of your Active Directory data to prevent data loss.
- Implement Group Policies: Use Group Policies to enforce security settings and configurations across the domain.
- Monitor Active Directory Health: Regularly check the health of your domain controllers and replication status.
- Limit Administrative Access: Only grant administrative privileges to users who absolutely need them to minimize security risks.

- **Use Strong Password Policies:** Enforce strong password policies to enhance security.

Troubleshooting Common Active Directory Issues

Despite thorough planning and execution, issues may still arise. Here are some common Active Directory problems and their solutions:

- **Replication Failures:** Check the Event Viewer for errors and ensure that firewalls are not blocking necessary ports.
- **Login Issues:** Verify that the user account is not locked out and check for correct DNS settings.
- **DNS Issues:** Make sure that your DNS server is properly configured and that the domain controllers are registered in DNS.

Conclusion

Configuring Windows Server 2008 Active Directory is essential for maintaining an organized and secure network. By understanding the components, following installation steps, and adhering to best practices, system administrators can effectively manage their network environment. With the answers to common configuration questions and troubleshooting tips, you can ensure a smooth Active Directory experience. As technology advances, staying up-to-date with the latest best practices and tools will help you manage your Active Directory environment effectively.

Frequently Asked Questions

What is the first step in configuring Active Directory on Windows Server 2008?

The first step is to install the Active Directory Domain Services (AD DS) role through the Server Manager.

How do you promote a server to a Domain Controller in Windows Server 2008?

After installing the AD DS role, you can promote the server to a Domain Controller by using the 'Active Directory Domain Services Installation Wizard' in Server Manager.

What are the system requirements for installing Active Directory on Windows Server 2008?

The system requirements include a compatible 64-bit processor, at least 512 MB of RAM (2 GB recommended), and sufficient disk space for the operating system and AD DS.

Can you install Active Directory on a server that is already a member of a domain?

Yes, but you must either promote it to a Domain Controller by creating a new domain or adding it to an existing domain.

What is the purpose of the Global Catalog in Active Directory?

The Global Catalog is a distributed data repository that contains a searchable, partial representation of every object in every domain in a multi-domain Active Directory forest.

How can you verify the successful installation of Active Directory on Windows Server 2008?

You can verify the installation by checking the Active Directory Users and Computers console and ensuring that the domain appears correctly, or by using the 'dcdiag' command.

Find other PDF article:

<https://soc.up.edu.ph/31-click/files?trackid=aEY53-4924&title=how-to-start-a-mobile-mechanic-business.pdf>

Windows Server 2008 Active Directory Configuration Answers

Windows - support.microsoft.com

Windows Windows 11 Windows 10 Windows 11 Windows Windows Windows 11 Windows 11: Windows Windows 11 ...

Install Windows Updates - Microsoft Support

If you're warned by Windows Update that you don't have enough space on your device to install updates, see Free up space for Windows updates. If you experience internet connection ...

Windows 11 - Microsoft

Windows 11 Windows 11 Microsoft Windows Windows 11 Windows 11 Windows 11

Welcome To Windows - support.microsoft.com

Welcome to Windows 11! Learn about new features, upgrade FAQs, device lifecycles, and support options.

Ways to install Windows 11 - Microsoft Support

Feb 4, 2025 · Learn how to install Windows 11, including the recommended option of using the Windows Update page in Settings.

[Windows 11 常见问题 - Microsoft 支持](#)

Windows 11 常见问题 常见问题 Windows 11 常见问题 常见问题 常见问题 Microsoft 支持 Windows 11 常见问题 常见问题 常见问题 ...

Aide et apprentissage Windows - support.microsoft.com

Trouvez de l'aide et des articles pratiques pour les systèmes d'exploitation Windows. Bénéficiez d'un support pour Windows et en savoir plus sur l'installation, les mises à jour, la ...

[Windows 11 常见问题 - Microsoft 支持](#)

Windows 11 常见问题 Windows 11 常见问题 常见问题 常见问题 常见问题 常见问题. 常见问题 Windows 10 常见问题 常见问题 PC 常见问题 常见问题 常见问题 ...

Criar mídia de instalação para o Windows - Suporte da Microsoft

O suporte ao Windows 10 terminará em outubro de 2025 Após 14 de outubro de 2025, a Microsoft não fornecerá mais atualizações gratuitas de software do Windows Update, assistência ...

[System Windows — pomoc i informacje - support.microsoft.com](#)

Znajdź pomoc i instrukcje dotyczące systemów operacyjnych Windows. Uzyskaj pomoc techniczną dla systemu Windows i dowiedz się więcej o instalacji, aktualizacjach, prywatności, ...

[常见问题 Windows - support.microsoft.com](#)

常见问题 Windows 常见问题 Windows 11 常见问题 Windows 10 常见问题 Windows 11 常见问题 Windows 常见问题 Windows 11 常见问题 Windows 11: 常见问题 Windows 11 常见问题 ...

[Install Windows Updates - Microsoft Support](#)

If you're warned by Windows Update that you don't have enough space on your device to install updates, see Free up space for Windows updates. If you experience internet connection ...

[常见问题 Windows 11 常见问题 - Microsoft 支持](#)

Windows 11 常见问题 常见问题 Windows 11 常见问题 Microsoft 常见问题 Windows 常见问题 Windows 11 常见问题 常见问题 Windows 11 常见问题

Welcome To Windows - support.microsoft.com

Welcome to Windows 11! Learn about new features, upgrade FAQs, device lifecycles, and support options.

[Ways to install Windows 11 - Microsoft Support](#)

Feb 4, 2025 · Learn how to install Windows 11, including the recommended option of using the Windows Update page in Settings.

[Windows 11 常见问题 - Microsoft 支持](#)

Windows 11 常见问题 常见问题 Windows 11 常见问题 常见问题 常见问题 常见问题 Microsoft 支持 Windows 11 常见问题 常见问题 常见问题 ...

Aide et apprentissage Windows - support.microsoft.com

Trouvez de l'aide et des articles pratiques pour les systèmes d'exploitation Windows. Bénéficiez d'un support pour Windows et en savoir plus sur l'installation, les mises à jour, la ...

[Windows 11 常见问题 - Microsoft 支持](#)

Windows 11 常见问题 Windows 11 常见问题 常见问题 常见问题 常见问题 常见问题. 常见问题 Windows 10 常见问题 常见问题 PC 常见问题 常见问题 常见问题 ...

[Criar mídia de instalação para o Windows - Suporte da Microsoft](#)

O suporte ao Windows 10 terminará em outubro de 2025 Após 14 de outubro de 2025, a Microsoft não fornecerá mais atualizações gratuitas de software do Windows Update, ...

[System Windows — pomoc i informacje - support.microsoft.com](#)

Znajdź pomoc i instrukcje dotyczące systemów operacyjnych Windows. Uzyskaj pomoc techniczną dla systemu Windows i dowiedz się więcej o instalacji, aktualizacjach, prywatności, ...

Unlock the secrets of Windows Server 2008 Active Directory configuration. Find expert answers and step-by-step guidance. Discover how to optimize your setup!

[Back to Home](#)