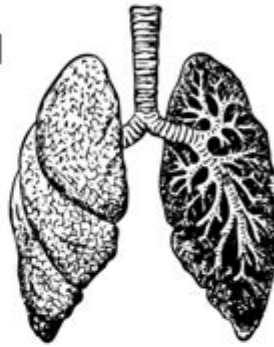
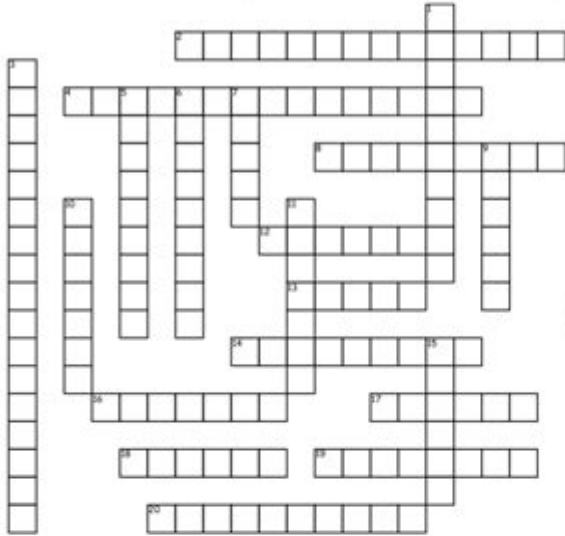


Wordmint Answer Keys

Name: _____ Date: _____ Period: _____

Respiratory System



Across

- 2. hereditary disease caused by excess mucus in the body
- 4. Thin layer of tissue that lines the pleural cavity
- 8. Muscle located at the bottom of lungs
- 12. Tube that connects trachea to lungs
- 13. Hair like structures that filter out particles entering nasal cavity
- 14. Disease caused by inflammation of the air sacs in the lungs

- 16. Connects mouth to the larynx and esophagus
- 17. To breathe out, diaphragm relaxes, moves upwards
- 18. voice box
- 19. Has 2 lobes
- 20. flap of cartilage located behind the tongue

Down

- 1. Disease caused by inflammation of the bronchial tubes
- 3. This system takes in oxygen and expels carbon dioxide

- 5. Disease caused when lung tissue is destroyed and air sacs are lost
- 6. Has 3 lobes
- 7. Main organ of the respiratory system
- 9. A chronic lung disease that inflames and narrows the bronchial tubes
- 10. gaseous exchange takes place here
- 11. Also known as the windpipe, filters air we inhale
- 15. To breathe in, diaphragm contracts, moves downward

Wordmint answer keys are an invaluable resource for educators, students, and puzzle enthusiasts alike. As a popular online tool for creating custom word puzzles, Wordmint allows users to generate crossword puzzles, word searches, and other engaging activities tailored to specific themes or subjects. However, with the creation of these puzzles comes the need for answer keys to ensure that users can quickly verify their solutions. In this article, we will explore the benefits of Wordmint answer keys, how to access them, and tips for maximizing their effectiveness in educational settings.

What is Wordmint?

Wordmint is a versatile online platform that enables users to design a variety of word puzzles. Its user-friendly interface allows individuals to input words, phrases, and clues to create customized crossword puzzles and word searches. This flexibility makes Wordmint a popular choice among

teachers, parents, and recreational puzzle solvers.

Types of Puzzles Available on Wordmint

Wordmint offers several types of puzzles, including:

- **Crossword Puzzles:** Interactive puzzles where users fill in words based on provided clues.
- **Word Searches:** Grids filled with letters where users must locate specific words hidden in various directions.
- **Word Scrambles:** Jumbled words that need to be rearranged to form the correct word.
- **Custom Puzzles:** Users can create puzzles tailored to specific educational topics or personal interests.

Why Are Answer Keys Important?

Answer keys are critical for several reasons, especially in educational settings:

1. Facilitating Learning

Answer keys provide immediate feedback to learners. When students complete a puzzle, they can compare their answers to the provided key, helping them identify areas where they excelled and where they may need additional practice.

2. Saving Time for Educators

Teachers often have limited time to grade assignments. Answer keys streamline the assessment process, allowing educators to quickly check answers and provide feedback without needing to solve each puzzle individually.

3. Enhancing Engagement

Using answer keys can encourage students to engage more deeply with the material. When students know they can check their answers, they may be more willing to take risks and try challenging puzzles.

How to Access Wordmint Answer Keys

Accessing Wordmint answer keys is straightforward, but it requires some familiarity with the platform. Here's a step-by-step guide:

1. Create Your Puzzle

Before you can access an answer key, you first need to create a puzzle. Follow these steps:

- Go to the Wordmint website.
- Select the type of puzzle you want to create (crossword, word search, etc.).
- Input the words and clues you want to include.
- Generate the puzzle.

2. Locate the Answer Key

Once you have generated your puzzle, Wordmint typically provides an option to view or download the answer key. Here's how to find it:

- After creating your puzzle, look for a button or link that says "Show Answer Key" or "Download Answer Key."
- Click on this option to view or save the answer key for future reference.

3. Print or Share the Answer Key

You can easily print the answer key or share it with students or fellow educators. This is especially useful for classroom settings where multiple students may be working on the same puzzle.

Best Practices for Using Wordmint Answer Keys in Education

To maximize the effectiveness of Wordmint answer keys in educational settings, consider implementing the following best practices:

1. Pair Puzzles with Learning Objectives

When creating puzzles, align them with specific learning objectives. For instance, if you are teaching vocabulary, include words related to the lesson. This ensures that students are practicing relevant material.

2. Use Answer Keys as a Teaching Tool

Instead of simply providing answer keys for students to check their work, use them as a teaching tool. After completing a puzzle, discuss the answers as a class to reinforce learning and address any misunderstandings.

3. Encourage Collaboration

Consider allowing students to work in pairs or small groups to solve puzzles. Provide answer keys for groups to use after they have attempted the puzzles together. This promotes collaboration and discussion, enhancing the learning experience.

4. Create a Puzzle Competition

Turn puzzle-solving into a fun competition. Provide answer keys for different groups and see who can complete their puzzles the quickest. This not only makes learning fun but also fosters a sense of teamwork.

Common Issues with Wordmint Answer Keys

While Wordmint answer keys are generally reliable, users may encounter a few common issues:

1. Incorrect Answers

Occasionally, users may find discrepancies between the answers they believe to be correct and those provided in the answer key. This can happen if the puzzle was not set up correctly or if there was an error in the word list.

2. Access Limitations

Some users may experience difficulties accessing answer keys if they are using a free version of Wordmint. In such cases, consider upgrading to a premium account for additional features and support.

3. Technical Glitches

Like any online platform, Wordmint may experience occasional technical glitches. If you encounter issues accessing your puzzle or answer key, try refreshing the page or reaching out to Wordmint's

support team.

Conclusion

Wordmint answer keys are essential tools that enhance the utility of word puzzles in educational settings and beyond. By providing immediate feedback, saving educators' time, and promoting engagement, answer keys play a pivotal role in making learning more enjoyable and effective. By following best practices and being aware of common issues, users can fully leverage the benefits of Wordmint and create a dynamic learning environment that fosters collaboration and critical thinking. Whether you are a teacher, a parent, or a puzzle enthusiast, understanding and utilizing answer keys can significantly enhance your experience with Wordmint and contribute to a successful learning journey.

Frequently Asked Questions

What are WordMint answer keys?

WordMint answer keys are solutions or answers provided for puzzles, games, or educational activities created using the WordMint platform.

How can I access WordMint answer keys?

You can access WordMint answer keys by either creating an account on the WordMint website or by searching for specific puzzles that may have publicly available answer keys.

Are WordMint answer keys available for all types of puzzles?

Not all puzzles on WordMint have answer keys available, but many popular ones do, especially those created for educational purposes.

Can I create my own answer keys for WordMint puzzles?

Yes, when you create puzzles on WordMint, you can generate and save answer keys for your own use or share them with others.

Why are answer keys important for WordMint activities?

Answer keys are important as they help users verify the correctness of their answers and facilitate learning by providing immediate feedback.

Is it possible to find WordMint answer keys for specific subjects?

Yes, you can find WordMint answer keys tailored to specific subjects by searching within the platform or browsing educational resources related to those subjects.

Can teachers use WordMint answer keys for classroom activities?

Absolutely! Teachers can utilize WordMint answer keys to enhance classroom activities, providing a way to assess students' understanding and facilitate discussions.

Are WordMint answer keys frequently updated?

WordMint answer keys are typically updated when new puzzles are created or existing puzzles are modified, but it depends on the individual creators.

How do I report an issue with a WordMint answer key?

If you encounter an issue with a WordMint answer key, you can usually report it through the platform's feedback feature or contact their customer support for assistance.

Find other PDF article:

<https://soc.up.edu.ph/58-view/Book?ID=ijk71-5501&title=the-black-womans-guide-to-understanding-the-blackman.pdf>

Wordmint Answer Keys

MSN | Personalized News, Top Headlines, Live Updates and more

Your personalized and curated collection of the best in trusted news, weather, sports, money, travel, entertainment, gaming, and video content

Lost Bridge Village Garfield Real Estate & Homes For Sale

Zillow has 54 homes for sale in Lost Bridge Village Garfield. View listing photos, review sales history, and use our detailed real estate filters to find the perfect place.

Tampa Affordable Carpet Cleaning

Call Us Now For All Your Carpet, Tile & Grout Cleaning! Affordable Carpet Cleaning in Tampa, FL uses only environmentally safe, non-toxic chemicals for all cleaning services. All of our ...

Find a Stanley Steemer Location Near Me

Find carpet cleaning near you and other professional services in your area by entering your zip code.

Lost Bridge Village vacation rentals - Vrbo

Explore an array of Lost Bridge Village vacation rentals, including houses, cabins & more bookable online. Choose from more than 232 properties, ideal house rentals for families, ...

Lost Bridge North, Beaver Lake - Recreation.gov

Jul 30, 2015 · Beaver Lake Lost Bridge North Campground sits along the vast shores of Beaver Lake in the Ozark Mountains of Northwest Arkansas, offering spacious and sunny campsites ...

Lost Bridge Marina | Beaver Lake | Arkansas

Lost Bridge Marina is located on Beaver Lake, Arkansas. We offer boat dockage, boat rentals, fishing guides, boating and fishing merchandise and affordable lodging.

□ □ □ □ □ □ □ □ □ □ □ □ □ □ □ □ □ □ □ □ □ □ □ □

,

□□□□□□□□ - □□□□□□□□net

19 hours ago · [\[redacted\]](#) OK [\[redacted\]](#)
[\[redacted\]](#) ...

2025 16

May 16, 2025 · 16

□□□□□□□□ - □□□□□ □□□□□[□□.com]

...

□□□□ □□□□□□□□ - □□□□

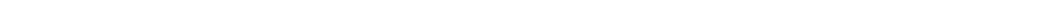
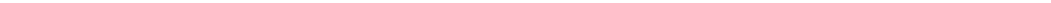
[illegible][illegible]

12km 24km 25km 12km 12km

□□□□□□□□□□□□□□ - *Yahoo!*□□□□

[illegible]

2025 -

Jan 7, 2025 ·   ...

□□□□□□□□ □□□□ - his-j.com

_____ HIS _____

Unlock the secrets to WordMint with our comprehensive answer keys! Boost your game and improve your skills. Learn more and elevate your WordMint experience today!

[Back to Home](#)