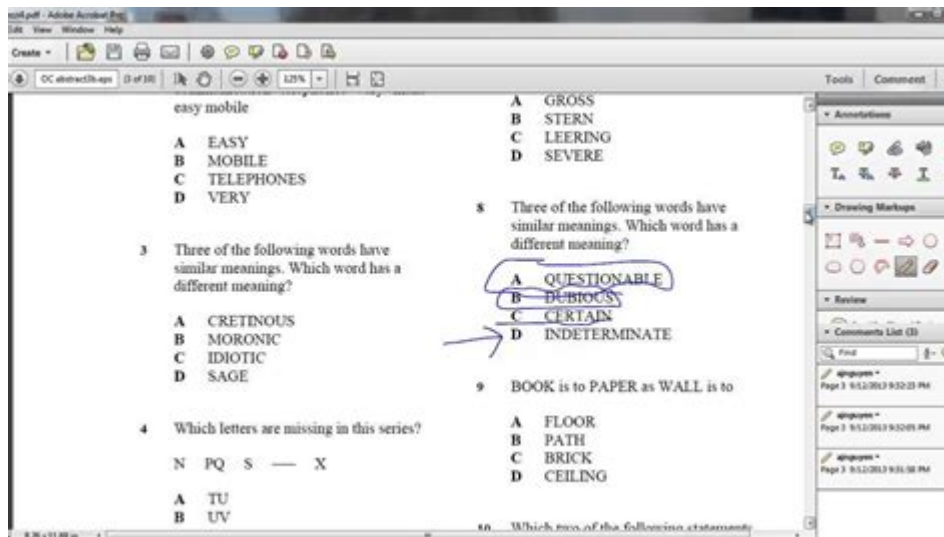


# Windows Module 1 Sam Exam



**Windows Module 1 SAM Exam** is a critical component of the Microsoft Office Specialist (MOS) certification program, focusing on essential skills in Microsoft Office applications. This exam is designed for individuals who want to demonstrate their proficiency in using Microsoft Office, particularly for tasks that involve creating, editing, and managing documents, spreadsheets, and presentations. This article will delve into the specifics of the Windows Module 1 SAM exam, covering its structure, preparation strategies, and the benefits of certification.

## Understanding the Windows Module 1 SAM Exam

The Windows Module 1 SAM exam is part of the Skills Assessment Manager (SAM) platform, which provides an interactive learning environment for users to master Office applications. This exam assesses a candidate's ability to effectively utilize Microsoft Office tools, which are essential in both academic and professional settings.

## Exam Structure

The Windows Module 1 SAM exam typically consists of the following components:

1. **Question Types:** The exam features a mix of multiple-choice questions, performance-based tasks, and simulation exercises. Candidates are tested on their practical skills and theoretical knowledge.
2. **Duration:** The exam is usually timed, lasting between 60 to 120 minutes, depending on the specific version of the exam and the number of tasks to be completed.
3. **Scoring:** Candidates must achieve a minimum score to pass. The scoring system typically ranges from 100 to 1000 points, with a passing score set around 700.

## Topics Covered

The exam covers various topics related to Microsoft Office, including but not limited to:

- Word Processing: Creating and formatting documents, using styles and themes, and inserting graphics and tables.
- Spreadsheet Management: Working with formulas and functions, creating charts, and managing data sets in Excel.
- Presentation Skills: Designing slideshows, using transitions and animations, and embedding multimedia elements in PowerPoint.
- File Management: Understanding file types, saving and sharing documents, and using cloud storage solutions.

## Preparing for the Windows Module 1 SAM Exam

Preparation is key to succeeding in the Windows Module 1 SAM exam. Here are some effective strategies to help candidates prepare:

### 1. Familiarize Yourself with the Exam Format

Understanding the exam structure is crucial for effective preparation. Candidates should review the types of questions they will encounter and practice with sample tests. Familiarizing oneself with the SAM platform will also help in navigating the exam environment smoothly.

### 2. Utilize Official Study Materials

Microsoft provides a range of official study materials and resources. These include:

- Textbooks and eBooks: Comprehensive guides that cover all the relevant topics.
- Online Courses: Interactive courses that offer video tutorials and quizzes to reinforce learning.
- Practice Tests: Simulated exams that mimic the actual testing conditions.

Accessing these resources can enhance understanding and retention of the material.

### 3. Engage in Hands-On Practice

Practical experience is essential in mastering Microsoft Office applications. Candidates should spend time working directly in Word, Excel, and PowerPoint, focusing on tasks such as:

- Creating and formatting documents in Word.
- Performing calculations and data analysis in Excel.
- Designing engaging presentations in PowerPoint.

Engaging in real-world projects can also provide valuable experience and confidence.

## **4. Join Study Groups**

Collaborating with peers can enhance learning outcomes. Candidates can join study groups or online forums where they can:

- Share resources and study tips.
- Discuss challenging topics.
- Take part in group study sessions and practice tests.

Learning from others can provide different perspectives and insights that may improve understanding.

## **5. Time Management Skills**

Effective time management is crucial during the exam. Candidates should practice answering questions within a set timeframe to build confidence and ensure they can complete the exam on time. Developing a study schedule that allocates time for each topic can also help in managing study time effectively.

# **Benefits of Passing the Windows Module 1 SAM Exam**

Achieving certification through the Windows Module 1 SAM exam offers numerous advantages that can enhance both academic and professional prospects.

## **1. Enhanced Career Opportunities**

Holding a Microsoft Office Specialist certification demonstrates a candidate's proficiency in essential office applications. This certification is recognized by employers worldwide and can significantly enhance job prospects in various fields, including business, education, and administration.

## **2. Increased Earning Potential**

Certified professionals often command higher salaries compared to their non-certified

counterparts. The expertise validated by the certification can lead to promotions and advancements within an organization.

### **3. Improved Productivity**

The skills acquired while preparing for the exam can lead to greater efficiency in daily tasks. Candidates will find that they can produce high-quality documents, spreadsheets, and presentations more quickly and with less effort.

### **4. Personal Satisfaction and Confidence**

Earning certification is a significant personal achievement that can boost self-esteem and confidence. The knowledge gained through studying for the exam can empower individuals to take on new challenges in their careers.

## **Conclusion**

The Windows Module 1 SAM exam is an excellent opportunity for individuals seeking to validate their skills in Microsoft Office applications. With its comprehensive structure, focused topics, and the potential for significant career advantages, it serves as an essential step for anyone looking to enhance their professional qualifications. By leveraging effective study strategies, utilizing official resources, and gaining hands-on experience, candidates can successfully prepare for and excel in the Windows Module 1 SAM exam. As the workplace continues to evolve, proficiency in Microsoft Office remains a vital skill, making this certification a valuable asset in today's competitive job market.

## **Frequently Asked Questions**

### **What topics are covered in the Windows Module 1 SAM exam?**

The Windows Module 1 SAM exam typically covers topics such as operating system installation, configuration, management, and troubleshooting of Windows environments.

### **How can I prepare effectively for the Windows Module 1 SAM exam?**

To prepare effectively, you should review official Microsoft documentation, take practice exams, use study guides, and consider enrolling in relevant training courses.

## What is the format of the Windows Module 1 SAM exam?

The exam usually consists of multiple-choice questions, simulations, and performance-based tasks that assess both theoretical knowledge and practical skills.

## What is the passing score for the Windows Module 1 SAM exam?

The passing score for the exam can vary, but it typically ranges from 700 to 800 out of a possible 1000 points, depending on the specific version of the exam.

## Are there any prerequisites for taking the Windows Module 1 SAM exam?

While there are no formal prerequisites, it is recommended that candidates have a basic understanding of Windows operating systems and some hands-on experience with system administration.

Find other PDF article:

<https://soc.up.edu.ph/12-quote/Book?docid=aPo06-7468&title=cheat-slot-machine-bill-acceptor.pdf>

## Windows Module 1 Sam Exam

Windows - support.microsoft.com

Windows Windows 11 Windows 10 Windows 11 Windows Windows Windows 11 Windows 11: Windows 11 ...

### Install Windows Updates - Microsoft Support

If you're warned by Windows Update that you don't have enough space on your device to install updates, see Free up space for Windows updates. If you experience internet connection ...

### Windows 11 - Microsoft

Windows 11 Windows 11 Microsoft Windows Windows 11 Windows 11

### Welcome To Windows - support.microsoft.com

Welcome to Windows 11! Learn about new features, upgrade FAQs, device lifecycles, and support options.

### Ways to install Windows 11 - Microsoft Support

Feb 4, 2025 · Learn how to install Windows 11, including the recommended option of using the Windows Update page in Settings.

### Windows 11 - Microsoft

Windows 11 帮助 支持 Windows 11 帮助 支持 Microsoft Windows 11 帮助 支持 ...

*Aide et apprentissage Windows - support.microsoft.com*

Trouvez de l'aide et des articles pratiques pour les systèmes d'exploitation Windows. Bénéficiez d'un support pour Windows et en savoir plus sur l'installation, les mises à jour, la ...

Windows 11 帮助 支持 - Microsoft 帮助

Windows 11 帮助 支持 Windows 11 帮助 支持 帮助 支持 帮助 支持 帮助 支持. 帮助 支持 Windows 10 帮助 支持 PC 帮助 支持 帮助 支持 ...

### **Criar mídia de instalação para o Windows - Suporte da Microsoft**

O suporte ao Windows 10 terminará em outubro de 2025 Após 14 de outubro de 2025, a Microsoft não fornecerá mais atualizações gratuitas de software do Windows Update, assistência ...

### **System Windows — pomoc i informacje - support.microsoft.com**

Znajdź pomoc i instrukcje dotyczące systemów operacyjnych Windows. Uzyskaj pomoc techniczną dla systemu Windows i dowiedz się więcej o instalacji, aktualizacjach, prywatności, ...

**帮助 Windows - support.microsoft.com**

帮助 Windows 帮助 Windows 11 帮助 Windows 10 帮助 Windows 11 帮助 Windows 帮助 Windows 11 帮助 Windows 11: 帮助 Windows 11 帮助 ...

*Install Windows Updates - Microsoft Support*

If you're warned by Windows Update that you don't have enough space on your device to install updates, see Free up space for Windows updates. If you experience internet connection ...

**帮助 Windows 11 帮助 - Microsoft 帮助**

Windows 11 帮助 帮助 Windows 11 帮助 Microsoft 帮助 Windows 帮助 Windows 11 帮助 帮助 Windows 11 帮助

Welcome To Windows - support.microsoft.com

Welcome to Windows 11! Learn about new features, upgrade FAQs, device lifecycles, and support options.

*Ways to install Windows 11 - Microsoft Support*

Feb 4, 2025 · Learn how to install Windows 11, including the recommended option of using the Windows Update page in Settings.

*Windows 11 帮助 支持 - Microsoft 帮助*

Windows 11 帮助 支持 帮助 Windows 11 帮助 支持 Microsoft 帮助 Windows 11 帮助 支持 ...

*Aide et apprentissage Windows - support.microsoft.com*

Trouvez de l'aide et des articles pratiques pour les systèmes d'exploitation Windows. Bénéficiez d'un support pour Windows et en savoir plus sur l'installation, les mises à jour, la ...

**Windows 11 帮助 支持 - Microsoft 帮助**

Windows 11 帮助 支持 Windows 11 帮助 支持 帮助 支持 帮助 支持 帮助 支持. 帮助 支持 Windows 10 帮助 支持 PC 帮助 支持 帮助 支持 ...

## **Criar mídia de instalação para o Windows - Suporte da Microsoft**

O suporte ao Windows 10 terminará em outubro de 2025 Após 14 de outubro de 2025, a Microsoft não fornecerá mais atualizações gratuitas de software do Windows Update, ...

[System Windows — pomoc i informacje - support.microsoft.com](https://support.microsoft.com/pl-pl/system-windows)

Znajdź pomoc i instrukcje dotyczące systemów operacyjnych Windows. Uzyskaj pomoc techniczną dla systemu Windows i dowiedz się więcej o instalacji, aktualizacjach, prywatności, ...

"Prepare for the Windows Module 1 SAM Exam with our expert tips and resources. Boost your confidence and ace the test! Learn more today!"

[Back to Home](#)