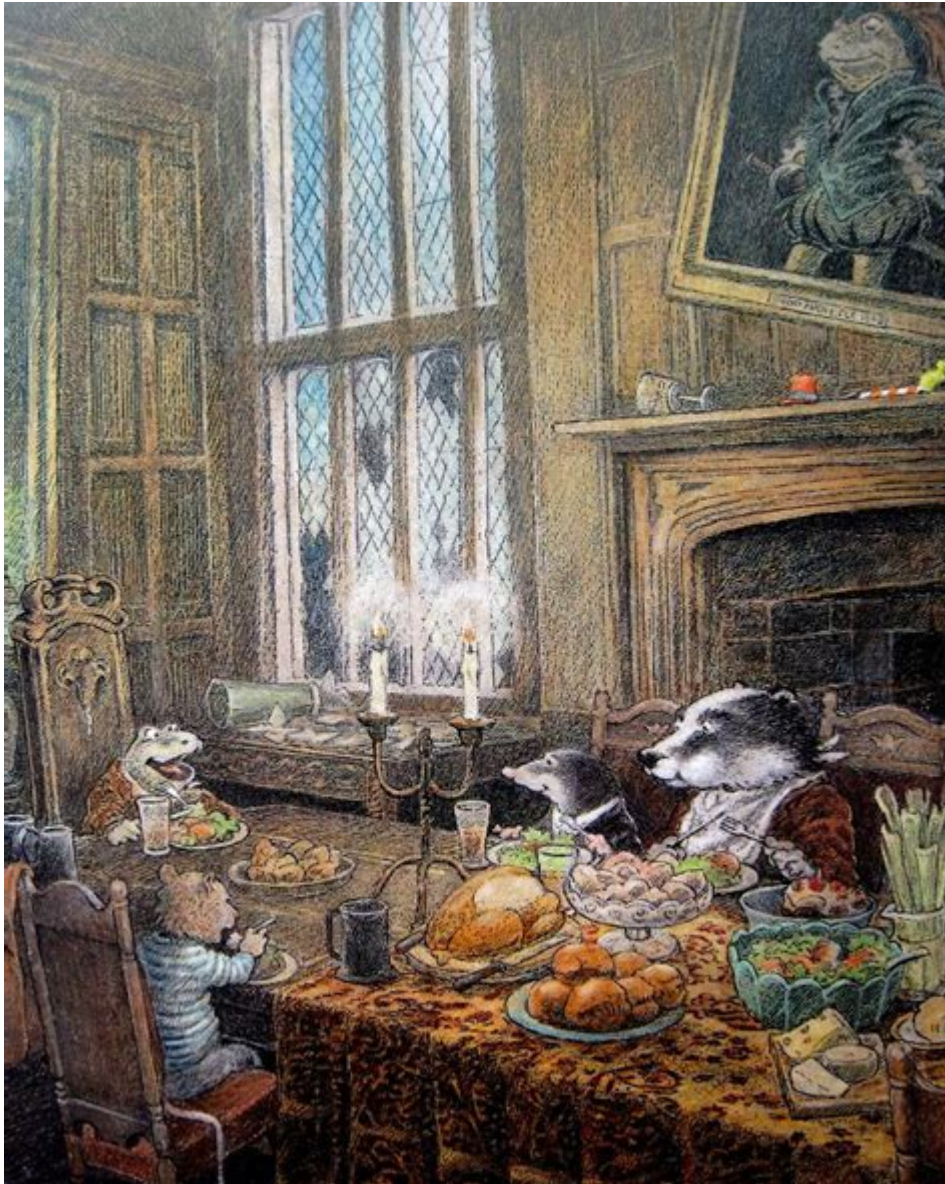


Wind In The Willows Inga Moore



Wind in the Willows Inga Moore is a delightful retelling of Kenneth Grahame's classic children's novel, renowned for its enchanting narrative and vivid illustrations. Inga Moore's adaptation breathes new life into the beloved tale, captivating a fresh audience while honoring the essence of the original story. This article will explore the themes, characters, and artistic elements of Moore's rendition, illustrating why it remains a treasured piece in children's literature.

The Essence of the Original Story

Kenneth Grahame's *The Wind in the Willows*, first published in 1908, is celebrated for its exploration of friendship, adventure, and the beauty of nature. The narrative revolves around the lives of four anthropomorphic

animals: Mole, Ratty (the Water Rat), Toad, and Badger. The story is set along the River Thames in England and encompasses themes of home, camaraderie, and the balance between nature and civilization.

Key Themes

1. **Friendship:** The bond between the characters is central to the story. Each animal brings unique traits to the group, showcasing the importance of friendship and collaboration in overcoming challenges.
2. **Adventure and Freedom:** Toad's impulsive nature leads him on various escapades, symbolizing the allure of adventure and the desire for freedom, contrasted with the responsibilities of home life.
3. **Nature vs. Industrialization:** The narrative reflects the tension between the natural world and the encroaching industrial landscape, a theme that resonates even more in modern discussions about environmental conservation.

Inga Moore's Artistic Interpretation

Inga Moore, an acclaimed illustrator and author, has gained recognition for her unique ability to reinterpret classic tales through her artistic lens. Her adaptation of *Wind in the Willows* combines her exquisite illustrations with a faithful retelling of the original story.

Illustrations That Enchant

Moore's illustrations are a standout feature of her adaptation. They not only accompany the text but also enhance the storytelling experience. Here are some key aspects of her artistic style:

- **Vivid Colors:** Moore employs a rich palette that brings the characters and their surroundings to life. The vibrancy of her illustrations evokes the beauty of the English countryside, inviting readers into the world of Mole and his friends.
- **Character Design:** Each character is depicted with distinct features that reflect their personalities. For instance, Toad's flamboyant attire and exuberant expressions capture his larger-than-life character, while Mole's gentle demeanor is illustrated through softer colors and expressions.
- **Detailed Landscapes:** Moore's landscapes are intricately designed, showcasing the lushness of the riverbank and the tranquility of the natural setting. These details not only serve as a backdrop but also play a significant role in conveying the story's themes.

Character Exploration

The characters in *Wind in the Willows* are multi-dimensional, each embodying different aspects of human nature. Moore's interpretation remains true to these characters while adding her own flair.

Mole

Mole is often seen as the everyman, representing curiosity and a longing for adventure. His journey from his cozy home underground to the exuberant world above reflects the theme of self-discovery. Moore captures Mole's innocence and growth through expressive illustrations that show his reactions to the wonders of nature.

Ratty (The Water Rat)

Ratty symbolizes the carefree spirit of friendship and the joys of living by the river. His love for boating and leisure contrasts with Toad's impulsive nature. Moore's portrayal of Ratty emphasizes his easy-going personality, often depicted with a content smile and a boat in tow.

Toad

Toad is a character full of contradictions—charismatic yet reckless, flamboyant yet foolish. His adventures often lead to trouble, but they also provide comic relief. Moore illustrates Toad with exaggerated features, emphasizing his larger-than-life persona and the chaos he brings to the narrative.

Badger

Badger represents wisdom and stability. He is the voice of reason among his friends and often helps them navigate the challenges they face. Moore's illustrations of Badger showcase his gruff exterior and deep compassion, reflecting the protective nature he exhibits in the story.

The Impact of Inga Moore's Adaptation

Inga Moore's adaptation of *Wind in the Willows* has been met with critical acclaim and has introduced the classic tale to a new generation of readers.

Her ability to balance the original story's charm with her artistic interpretation has garnered praise from both children and adults alike.

Educational Value

Moore's adaptation serves as an excellent educational tool, promoting discussions about friendship, nature, and the importance of balancing adventure with responsibility. Teachers often use the book to engage students in discussions about literature, art, and the environment.

Appeal to Modern Audiences

The themes explored in *Wind in the Willows* remain relevant today. Inga Moore's adaptation has a timeless quality, appealing to modern audiences who appreciate both narrative depth and visual artistry. Her illustrations provide a captivating entry point for young readers, making the story accessible and engaging.

Conclusion

Inga Moore's *Wind in the Willows* stands as a remarkable adaptation of Kenneth Grahame's timeless classic. Through her enchanting illustrations and heartfelt retelling, Moore captures the spirit of the original tale while introducing it to a new audience. The themes of friendship, adventure, and the beauty of nature resonate deeply, making this adaptation not only a visual delight but also a meaningful literary experience. As we navigate our fast-paced world, the wisdom of Mole, Ratty, Toad, and Badger serves as a gentle reminder of the importance of cherishing friendships and the natural world around us. Whether revisiting the story or discovering it for the first time, readers of all ages will find joy and inspiration in Moore's interpretation of this beloved classic.

Frequently Asked Questions

Who is Inga Moore and what is her contribution to 'The Wind in the Willows'?

Inga Moore is a renowned illustrator known for her beautiful and detailed illustrations in the latest edition of *'The Wind in the Willows'*. Her artwork brings a fresh perspective to Kenneth Grahame's classic tale, enhancing the storytelling experience.

How does Inga Moore's illustration style differ from previous editions of 'The Wind in the Willows'?

Inga Moore's illustration style is characterized by its vibrant colors and intricate details, which create a more immersive and enchanting atmosphere compared to earlier editions that often used simpler illustrations.

What themes does Inga Moore highlight through her illustrations in 'The Wind in the Willows'?

Inga Moore highlights themes of friendship, adventure, and nature through her illustrations, capturing the essence of the characters' journeys and the beauty of the English countryside.

Has 'The Wind in the Willows' by Inga Moore received any awards or recognitions?

Yes, Inga Moore's edition of 'The Wind in the Willows' has received critical acclaim and several awards for its artistic quality and contribution to children's literature.

What age group is Inga Moore's edition of 'The Wind in the Willows' best suited for?

Inga Moore's edition of 'The Wind in the Willows' is best suited for children ages 5 to 12, but it also appeals to adults who appreciate classic literature and beautiful illustrations.

How does Inga Moore's interpretation of the characters in 'The Wind in the Willows' stand out?

Inga Moore's interpretation of the characters is notable for its emotional depth and expressiveness, allowing readers to connect more deeply with Mole, Ratty, Toad, and Badger through her visual storytelling.

Where can I find a copy of 'The Wind in the Willows' illustrated by Inga Moore?

You can find Inga Moore's illustrated edition of 'The Wind in the Willows' at major bookstores, online retailers like Amazon, and in libraries that carry classic children's literature.

Find other PDF article:

<https://soc.up.edu.ph/40-trend/Book?ID=IJW90-2158&title=mcdougal-littell-language-of-literature-grade-9.pdf>

Wind In The Willows Inga Moore

Wind (Wind) -

Wind Excel po excel wind Excel
wind ...

wind -

WIND “ ” WIND 3.98
3.46 AMS ...

Wind, iFind, Choice -

Wind iFind Choice 1. iFind Wind
...

wind -

wind? 2016 wind

Wind iFind Choice ...

Wind iFind Choice 1. Wind
...

Wind (Wind) -

Wind Excel po excel wind Excel
wind ...

wind -

WIND “ ” WIND 3.98
3.46 AMS 5.8 10

Wind, iFind, Choice

Wind iFind Choice 1. iFind Wind
...

wind -

wind? 2016 wind

Wind iFind Choice ...

Wind iFind Choice 1. Wind
...

wind -

wind F6 F5 F9 Wind 95%
wind

wind -

Jul 27, 2020 · wind

Windows -

Mar 18, 2025 · Win10 Windows Windows Update

Wind, iFind, Choice

WIND3CIFIND WINDIFIND
IFINDWIND

wind -

PSwindwind windwindwindwind

Explore the enchanting world of 'Wind in the Willows' with Inga Moore's stunning illustrations.
Discover how her artistry breathes life into this classic tale!

[Back to Home](#)