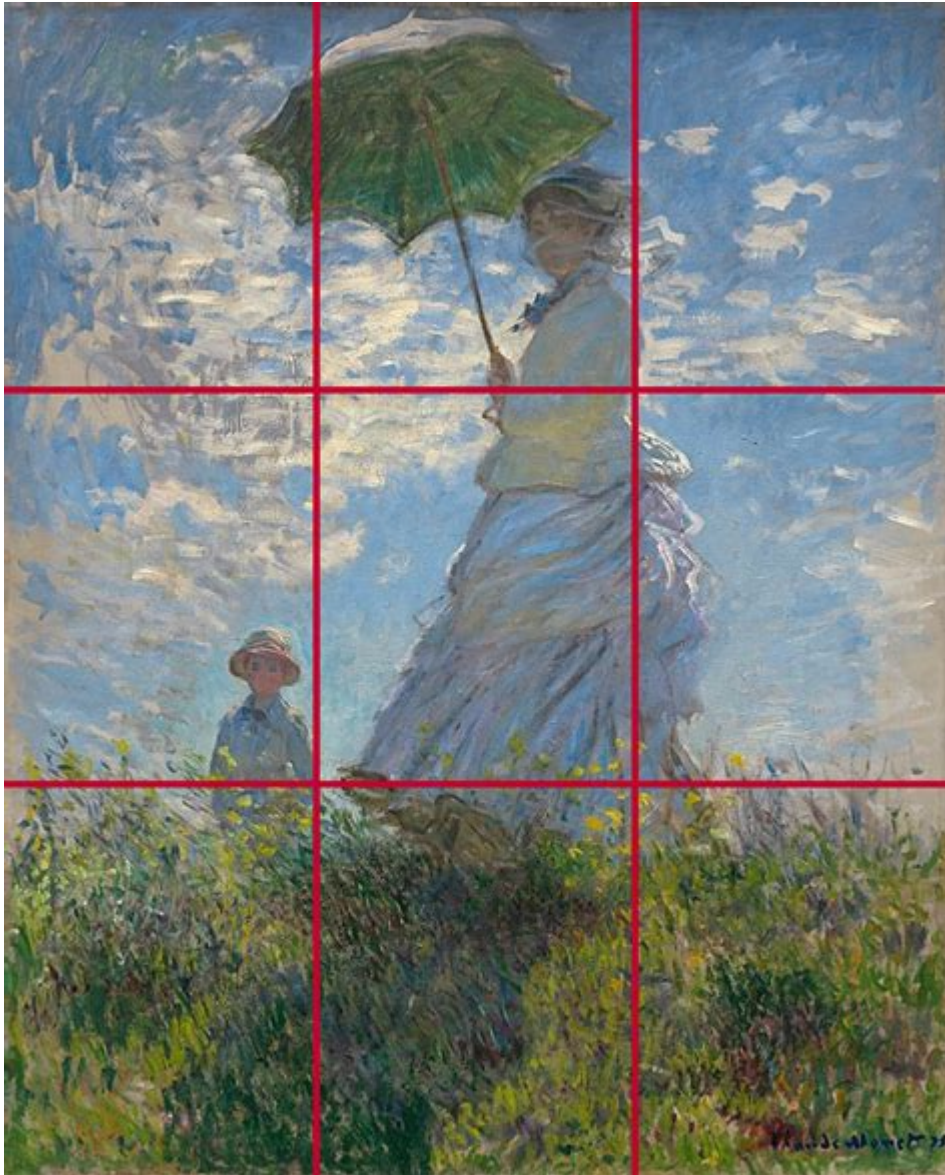


# Woman With A Parasol Analysis



**WOMAN WITH A PARASOL** IS ONE OF THE MOST ICONIC PAINTINGS BY THE FRENCH IMPRESSIONIST CLAUDE MONET, COMPLETED IN 1875. THIS ARTWORK CAPTURES A MOMENT OF LEISURE IN THE LIFE OF A WOMAN AND REFLECTS THE BURGEONING IMPRESSIONIST MOVEMENT, WHICH SOUGHT TO DEPICT THE WORLD IN NEW AND INNOVATIVE WAYS. MONET'S USE OF LIGHT, COLOR, AND BRUSHSTROKE TECHNIQUES IN THIS PAINTING NOT ONLY SHOWCASES HIS ARTISTIC PROWESS BUT ALSO INVITES VIEWERS TO CONTEMPLATE THEMES OF FEMININITY, NATURE, AND THE PASSAGE OF TIME. IN THIS ARTICLE, WE WILL EXPLORE THE VARIOUS ELEMENTS OF "WOMAN WITH A PARASOL," INCLUDING ITS HISTORICAL CONTEXT, COMPOSITION, COLOR PALETTE, AND THE BROADER SIGNIFICANCE OF THE PIECE WITHIN THE IMPRESSIONIST MOVEMENT.

## HISTORICAL CONTEXT

### THE IMPRESSIONIST MOVEMENT

THE IMPRESSIONIST MOVEMENT EMERGED IN THE LATE 19TH CENTURY AS A RADICAL DEPARTURE FROM TRADITIONAL ARTISTIC

CONVENTIONS. ARTISTS SOUGHT TO CAPTURE THE FLEETING EFFECTS OF LIGHT AND ATMOSPHERE, OFTEN PAINTING EN PLEIN AIR (OUTDOORS) TO ACHIEVE A MORE AUTHENTIC REPRESENTATION OF THEIR SUBJECTS. MONET, ALONGSIDE CONTEMPORARIES LIKE PIERRE-AUGUSTE RENOIR AND EDGAR DEGAS, PLAYED A PIVOTAL ROLE IN THIS MOVEMENT, CHALLENGING ESTABLISHED NORMS AND REDEFINING WHAT ART COULD BE.

## MONET'S LIFE AND INFLUENCES

CLAUDE MONET WAS BORN IN 1840 IN PARIS AND GREW UP IN LE HAVRE, WHERE HE DEVELOPED AN EARLY INTEREST IN PAINTING. HIS EXPOSURE TO THE COASTAL LANDSCAPES AND CHANGING LIGHT CONDITIONS PROFOUNDLY INFLUENCED HIS WORK. "WOMAN WITH A PARASOL" WAS PAINTED DURING A PERIOD WHEN MONET WAS EXPERIMENTING WITH CAPTURING LIGHT AND MOVEMENT, MAKING IT A SIGNIFICANT WORK IN HIS OEUVRE. THE PAINTING DEPICTS HIS WIFE, CAMILLE DONCIEUX, AND THEIR SON, JEAN, AND REFLECTS BOTH PERSONAL AND UNIVERSAL THEMES.

## COMPOSITION AND SUBJECT MATTER

### THE FIGURE OF THE WOMAN

AT THE CENTER OF "WOMAN WITH A PARASOL" IS MONET'S WIFE, CAMILLE, ELEGANTLY POSED AGAINST A BACKDROP OF A SUNLIT LANDSCAPE. THE FIGURE IS DEPICTED WITH A PARASOL HELD ABOVE HER HEAD, WHICH NOT ONLY PROVIDES SHADE BUT ALSO BECOMES A STRIKING VISUAL ELEMENT. CAMILLE IS DRESSED IN A WHITE DRESS, WHICH EMPHASIZES HER FEMININITY AND PURITY. THE WAY HER DRESS BILLOWS IN THE WIND SUGGESTS MOVEMENT AND LIVELINESS, CAPTURING A MOMENT OF SPONTANEITY.

### THE CHILD AND THE LANDSCAPE

IN THE BACKGROUND, THEIR SON, JEAN, IS VISIBLE, ADDING A LAYER OF INTIMACY AND FAMILY LIFE TO THE SCENE. THE LANDSCAPE IS RENDERED WITH LOOSE BRUSHSTROKES, ALLOWING THE VIEWER TO FEEL THE BREEZE AND THE WARMTH OF THE SUN. THE FLOWERS AND GRASS ARE DEPICTED IN VIBRANT GREENS AND YELLOWS, ENHANCING THE SENSE OF A BRIGHT SUMMER DAY. THIS COMPOSITION REFLECTS THE IMPRESSIONIST DESIRE TO CAPTURE EVERYDAY MOMENTS AND THE BEAUTY OF NATURE.

## COLOR PALETTE AND LIGHT EFFECTS

### USE OF COLOR

MONET'S CHOICE OF COLORS IN "WOMAN WITH A PARASOL" IS PARTICULARLY IMPORTANT IN CONVEYING MOOD AND ATMOSPHERE. THE DOMINANT WHITES AND SOFT BLUES OF THE SKY CONTRAST SHARPLY WITH THE VIBRANT GREENS AND YELLOWS OF THE GRASS AND FLOWERS. THIS JUXTAPOSITION NOT ONLY HIGHLIGHTS THE CENTRAL FIGURE BUT ALSO CREATES A SENSE OF HARMONY WITHIN THE COMPOSITION.

- KEY COLORS:
- WHITES: SYMBOLIZING PURITY AND LIGHT.
- GREENS AND YELLOWS: REPRESENTING NATURE AND VITALITY.
- BLUES: EVOKING TRANQUILITY AND OPENNESS.

# LIGHT AND SHADOW

THE INTERPLAY OF LIGHT AND SHADOW IS A HALLMARK OF MONET'S WORK. IN THIS PAINTING, THE SUNLIGHT DAPPLES THE FIGURES AND THE LANDSCAPE, CREATING A VIBRANT, SHIMMERING EFFECT. THE USE OF SHORT, BROKEN BRUSHSTROKES ALLOWS THE COLORS TO BLEND OPTICALLY, ENHANCING THE SENSE OF MOVEMENT AND LUMINOSITY. THIS TECHNIQUE INVITES VIEWERS TO ENGAGE WITH THE PAINTING ON A SENSORY LEVEL, EXPERIENCING THE WARMTH OF THE SUN AND THE COOLNESS OF THE BREEZE.

## THEMATIC INTERPRETATION

### FEMININE IDENTITY AND DOMESTICITY

"WOMAN WITH A PARASOL" CAN BE SEEN AS A CELEBRATION OF FEMININE IDENTITY AND DOMESTIC LIFE. THE PORTRAYAL OF CAMILLE IN A MOMENT OF LEISURE SUGGESTS A BLEND OF PERSONAL AND SOCIAL ROLES. WHILE SHE EMBODIES THE IDEAL OF THE NURTURING MOTHER, HER CONFIDENT POSE WITH THE PARASOL ALSO SUGGESTS INDEPENDENCE AND STRENGTH. MONET'S CHOICE TO DEPICT HIS WIFE IN SUCH A LIGHT REFLECTS HIS ADMIRATION AND LOVE FOR HER, AS WELL AS THE CHANGING PERCEPTIONS OF WOMEN'S ROLES IN SOCIETY AT THE TIME.

### THE RELATIONSHIP WITH NATURE

NATURE PLAYS A CRUCIAL ROLE IN THIS PAINTING, SERVING AS BOTH A BACKDROP AND A CHARACTER IN THE NARRATIVE. THE LUSH LANDSCAPE REPRESENTS THE BEAUTY AND VITALITY OF THE NATURAL WORLD, WHICH MONET OFTEN SOUGHT TO CAPTURE IN HIS WORK. THE PARASOL CAN ALSO BE INTERPRETED AS A METAPHOR FOR THE PROTECTION AND SHELTER THAT NATURE PROVIDES. THIS DUAL RELATIONSHIP BETWEEN WOMAN AND NATURE REFLECTS A BROADER THEME IN IMPRESSIONISM, WHERE THE BEAUTY OF THE NATURAL WORLD IS INTERTWINED WITH HUMAN EXPERIENCE.

## IMPACT AND LEGACY

### RECEPTION AND INFLUENCE

UPON ITS COMPLETION, "WOMAN WITH A PARASOL" WAS WELL-RECEIVED AND HAS SINCE BECOME ONE OF MONET'S MOST CELEBRATED WORKS. IT WAS DISPLAYED AT THE 1876 IMPRESSIONIST EXHIBITION IN PARIS, WHERE IT DREW ATTENTION FOR ITS INNOVATIVE STYLE AND EMOTIONAL DEPTH. THE PAINTING HAS INFLUENCED GENERATIONS OF ARTISTS WHO HAVE SOUGHT TO EXPLORE SIMILAR THEMES OF LIGHT, MOVEMENT, AND THE EPHEMERAL NATURE OF LIFE.

## CONTEMPORARY RELEVANCE

TODAY, "WOMAN WITH A PARASOL" REMAINS A SIGNIFICANT PIECE IN ART HISTORY, FREQUENTLY STUDIED AND REFERENCED IN DISCUSSIONS ABOUT IMPRESSIONISM AND THE EVOLUTION OF MODERN ART. ITS THEMES OF FEMININITY, NATURE, AND THE PASSAGE OF TIME RESONATE WITH CONTEMPORARY AUDIENCES, INVITING REFLECTIONS ON THE ROLES OF WOMEN AND THE IMPORTANCE OF NATURE IN OUR LIVES.

## CONCLUSION

IN CONCLUSION, "WOMAN WITH A PARASOL" STANDS AS A TESTAMENT TO CLAUDE MONET'S ARTISTIC BRILLIANCE AND THE TRANSFORMATIVE POWER OF THE IMPRESSIONIST MOVEMENT. THROUGH ITS COMPOSITION, COLOR PALETTE, AND THEMATIC DEPTH, THE PAINTING CAPTURES A MOMENT OF BEAUTY AND INTIMACY THAT TRANSCENDS TIME. IT INVITES VIEWERS TO APPRECIATE NOT ONLY THE VISUAL SPLENDOR OF THE SCENE BUT ALSO THE EMOTIONAL UNDERTONES THAT SPEAK TO THE COMPLEXITIES OF HUMAN EXPERIENCE. AS WE REFLECT ON THIS REMARKABLE WORK, WE ARE REMINDED OF THE ENDURING IMPACT OF ART AND THE WAYS IT CAN ILLUMINATE OUR UNDERSTANDING OF OURSELVES AND THE WORLD AROUND US.

## FREQUENTLY ASKED QUESTIONS

### WHAT IS THE SIGNIFICANCE OF THE PARASOL IN 'WOMAN WITH A PARASOL'?

THE PARASOL SERVES AS A SYMBOL OF FEMININITY AND PROTECTION, REFLECTING THE SOCIAL NORMS OF THE TIME WHILE ALSO HIGHLIGHTING THE WOMAN'S INDIVIDUALITY AND STRENGTH.

### HOW DOES MONET'S BRUSHWORK CONTRIBUTE TO THE OVERALL MOOD OF 'WOMAN WITH A PARASOL'?

MONET'S LOOSE AND DYNAMIC BRUSHWORK CREATES A SENSE OF MOVEMENT AND SPONTANEITY, CAPTURING THE FLEETING EFFECTS OF LIGHT AND ATMOSPHERE, WHICH ENHANCES THE OVERALL IMPRESSION OF A JOYFUL, CAREFREE MOMENT.

### IN WHAT WAYS DOES 'WOMAN WITH A PARASOL' EXEMPLIFY IMPRESSIONIST TECHNIQUES?

THE PAINTING EXEMPLIFIES IMPRESSIONIST TECHNIQUES THROUGH ITS EMPHASIS ON NATURAL LIGHT, THE USE OF COLOR TO CONVEY MOOD, AND THE FOCUS ON EVERYDAY SUBJECTS RATHER THAN HISTORICAL OR MYTHOLOGICAL THEMES.

### WHAT ROLE DOES COLOR PLAY IN 'WOMAN WITH A PARASOL'?

COLOR PLAYS A CRUCIAL ROLE IN CONVEYING EMOTION AND ATMOSPHERE; THE VIBRANT GREENS AND BLUES CREATE A LIVELY OUTDOOR SCENE, WHILE THE PALE WHITES AND SOFT PASTELS OF THE WOMAN'S ATTIRE SUGGEST ELEGANCE AND TRANQUILITY.

### HOW DOES 'WOMAN WITH A PARASOL' REFLECT THE CHANGING ROLES OF WOMEN IN THE LATE 19TH CENTURY?

THE PAINTING REFLECTS THE CHANGING ROLES OF WOMEN BY PORTRAYING A WOMAN IN AN ACTIVE, OUTDOOR SETTING, SUGGESTING A SHIFT FROM TRADITIONAL DOMESTIC ROLES TO A MORE LIBERATED AND PUBLIC PRESENCE IN SOCIETY.

### WHAT ELEMENTS OF COMPOSITION ARE NOTABLE IN 'WOMAN WITH A PARASOL'?

NOTABLE ELEMENTS OF COMPOSITION INCLUDE THE DIAGONAL LINES CREATED BY THE WOMAN'S POSE AND THE PARASOL, WHICH DRAW THE VIEWER'S EYE THROUGH THE PAINTING, AND THE BALANCE BETWEEN THE FIGURE AND THE SURROUNDING LANDSCAPE.

### WHAT EMOTIONAL TONE DOES 'WOMAN WITH A PARASOL' CONVEY?

THE EMOTIONAL TONE OF THE PAINTING IS ONE OF JOY AND SERENITY, EVOKING A SENSE OF LEISURE AND APPRECIATION FOR NATURE, AS WELL AS A PERSONAL CONNECTION BETWEEN THE VIEWER AND THE SUBJECT.

### HOW DOES THE SETTING OF 'WOMAN WITH A PARASOL' CONTRIBUTE TO ITS OVERALL THEME?

THE SETTING, CHARACTERIZED BY A LUSH GREEN FIELD AND A BRIGHT SKY, CONTRIBUTES TO THE THEME OF FREEDOM AND THE

Find other PDF article:

<https://soc.up.edu.ph/14-blur/Book?docid=iWS40-5228&title=color-changing-flowers-science-project-conclusion.pdf>

## **Woman With A Parasol Analysis**

### **Звёзды | WOMAN**

Звёзды — самые последние новости, статьи, обзоры, даты и другая свежая информация. Все материалы по теме ...

### **Новости | WOMAN**

Новости — самые последние новости, статьи, обзоры, даты и другая свежая информация. Все материалы по теме ...

### **Женский форум Woman.ru: настоящая женщина, как она есть**

Огромная женская компания, где можно найти ответы на любые вопросы, откровенно поговорить о наболевшем и ...

### *Регина Тодоренко раскрыла пол третьего ребенка | WOMAN*

Jun 27, 2025 · В свой 35-й день рождения Регина Тодоренко сделала самый трогательный подарок поклонникам — объявила, что ...

### Валя Карнавал попала в скандал с ... - Woman.ru

Jul 4, 2025 · Мошенники хотели заработать денег. Однако Карнавал сразу же обратилась в полицию, и преступников задержали.

### *Что заставило Кейт Миддлтон ... - Woman.ru*

Jun 19, 2025 · Что заставило Кейт Миддлтон отменить участие в Royal Ascot за 20 минут до начала? Узнали ответ

### **Есть ли шансы у Муцениеце вернуть сына домой — ответила ...**

Jun 25, 2025 · Сын выразил желание жить с отцом. Абсолютно законное справедливое решение», — говорит Woman.ru Екатерина Гордон.

### 56-летняя Мэрайя Кэри помолодела ... - Woman.ru

Jun 11, 2025 · 56-летняя Мэрайя Кэри помолодела на 20 лет — пластический хирург раскрыл ее секрет

### **Прилучный обвиняет Муцениеце в клевете — что показала ...**

Jun 24, 2025 · И моя задача — доказать этот обман», — сказала в беседе с Woman.ru адвокат актера Оксана Даниелова.

### Перминова удалила фото с ... - Woman.ru

Jun 4, 2025 · Перминова удалила фото с бойфрендом из соцсетей, но прилетела к нему в Париж

с детьми

## **Звёзды | WOMAN**

Звёзды — самые последние новости, статьи, обзоры, даты и другая свежая информация. Все материалы по теме ...

## **Новости | WOMAN**

Новости — самые последние новости, статьи, обзоры, даты и другая свежая информация. Все материалы по теме ...

## **Женский форум Woman.ru: настоящая женщина, как она есть**

Огромная женская компания, где можно найти ответы на любые вопросы, откровенно поговорить о наблевшем и ...

### Регина Тодоренко раскрыла пол третьего ребенка | WOMAN

Jun 27, 2025 · В свой 35-й день рождения Регина Тодоренко сделала самый трогательный подарок поклонникам — объявила, что ...

### *Валя Карнавал попала в скандал с ... - Woman.ru*

Jul 4, 2025 · Мошенники хотели заработать денег. Однако Карнавал сразу же обратилась в полицию, и преступников задержали.

### **Что заставило Кейт Миддлтон ... - Woman.ru**

Jun 19, 2025 · Что заставило Кейт Миддлтон отменить участие в Royal Ascot за 20 минут до начала? Узнали ответ

### **Есть ли шансы у Муцениеце вернуть сына домой — ответила ...**

Jun 25, 2025 · Сын выразил желание жить с отцом. Абсолютно законное справедливое решение», — говорит Woman.ru Екатерина Гордон.

### **56-летняя Мэрайя Кэри помолодела ... - Woman.ru**

Jun 11, 2025 · 56-летняя Мэрайя Кэри помолодела на 20 лет — пластический хирург раскрыл ее секрет

### **Прилучный обвиняет Муцениеце в клевете — что показала ...**

Jun 24, 2025 · И моя задача — доказать этот обман», — сказала в беседе с Woman.ru адвокат актера Оксана Даниелова.

### **Перминова удалила фото с ... - Woman.ru**

Jun 4, 2025 · Перминова удалила фото с бойфрендом из соцсетей, но прилетела к нему в Париж с детьми

Explore the intricate details of 'Woman with a Parasol' in our in-depth analysis. Discover how this masterpiece captures light and emotion. Learn more!

[Back to Home](#)