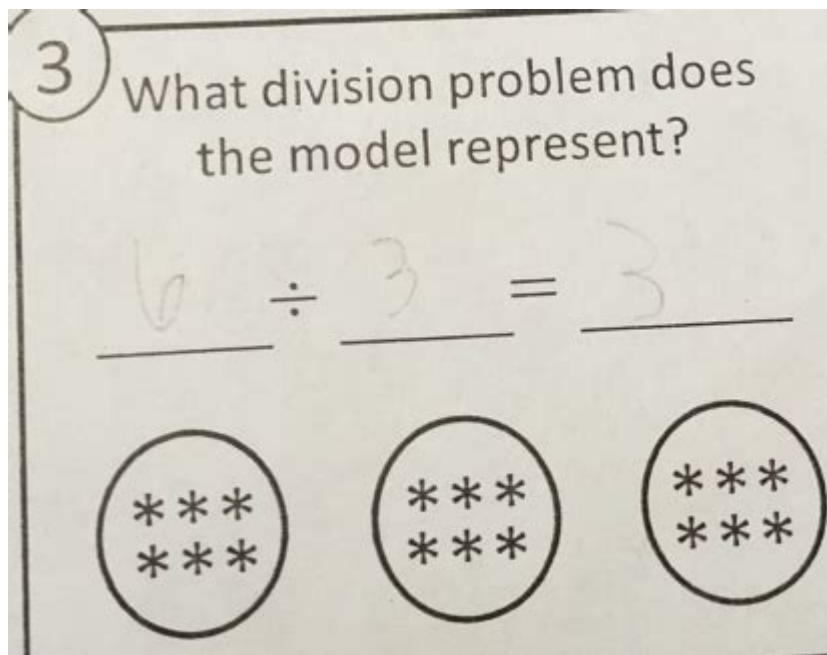


# What Problem Does The Model



## What Problem Does the Model Solve?

In the realm of data science and machine learning, models serve as the backbone for deriving valuable insights and making informed predictions. However, the effectiveness of a model is often contingent upon its ability to accurately address specific problems. Understanding what problems different models solve is crucial for businesses, researchers, and developers alike. This article delves into the various types of models, their applications, and the specific problems they are designed to tackle.

## Understanding Models in Data Science

Before we dive into the problems that models solve, it is essential to understand what a model is in the context of data science. A model is a mathematical construct that represents a system or process, allowing predictions or decisions based on input data. Models can range from simple linear regressions to complex neural networks, each tailored to handle different types of data and problem scenarios.

## Types of Models

Models can be categorized into several types, primarily based on their functionality and the nature of the problems they address:

1. Supervised Learning Models: These models learn from labeled data. They are used for classification and regression tasks.
  - Classification Models: Used to categorize data into predefined classes (e.g., spam detection in

emails).

- Regression Models: Used to predict continuous outcomes (e.g., predicting house prices).

2. Unsupervised Learning Models: These models find patterns in unlabeled data. They are commonly used for clustering and association tasks.

- Clustering Models: Group similar data points together (e.g., customer segmentation).

- Association Models: Discover relationships between variables (e.g., market basket analysis).

3. Reinforcement Learning Models: These models learn by interacting with an environment. They are used in applications like robotics and gaming, where decision-making is crucial.

4. Deep Learning Models: A subset of machine learning that uses neural networks to process data with multiple layers. It is particularly effective in image and speech recognition.

## Specific Problems Addressed by Models

Each type of model is designed to solve specific problems across various domains. Here, we explore some of the prominent issues tackled by these models:

### 1. Predictive Analytics

Predictive analytics is one of the most common applications of machine learning models. These models analyze historical data to predict future outcomes. The problems addressed include:

- Sales Forecasting: Businesses use predictive models to estimate future sales based on past performance and market trends.

- Customer Behavior Prediction: Models can forecast customer preferences and behaviors, enabling personalized marketing strategies.

### 2. Classification Problems

Classification models play a vital role in sorting data into categories. The challenges they solve include:

- Spam Detection: Classifying emails as spam or not spam helps maintain the quality of communication.

- Medical Diagnosis: Models can classify patient data to identify diseases based on symptoms and medical history.

### 3. Regression Problems

Regression models address issues where the goal is to predict a continuous outcome. Some of the problems solved include:

- Real Estate Valuation: Predicting property prices based on various features such as location, size, and amenities.
- Financial Forecasting: Estimating stock prices or economic indicators based on historical data.

## **4. Clustering and Segmentation**

Unsupervised learning models excel in identifying patterns without labeled outcomes. They help solve problems such as:

- Customer Segmentation: Grouping customers based on purchasing behavior, enabling targeted marketing campaigns.
- Anomaly Detection: Identifying unusual patterns in data that may indicate fraud or system malfunctions.

## **5. Natural Language Processing (NLP)**

NLP models tackle problems related to human language, enabling machines to understand and respond to text or speech. Issues addressed include:

- Sentiment Analysis: Determining the emotional tone behind a body of text, useful for brand monitoring.
- Chatbots and Virtual Assistants: Automating customer service interactions by understanding user queries.

## **6. Image and Speech Recognition**

Deep learning models are particularly adept at handling image and speech data. The problems they solve include:

- Facial Recognition: Identifying individuals in images for security purposes.
- Speech-to-Text Conversion: Transcribing spoken language into written text, aiding accessibility and communication.

## **The Importance of Problem-Solution Fit**

Understanding the specific problems that models solve is crucial for achieving effective outcomes. The concept of problem-solution fit refers to the alignment between a model's capabilities and the challenges it aims to address. This alignment is essential for several reasons:

1. Resource Optimization: Selecting the right model for a specific problem ensures efficient use of computational resources and time.
2. Improved Accuracy: Tailoring models to specific issues increases the likelihood of achieving high

accuracy in predictions and classifications.

3. Business Value: Organizations can derive greater value from their data by applying models that directly address their unique challenges.

4. Scalability and Adaptability: Understanding the problems at hand allows for the development of scalable solutions that can adapt to changing needs over time.

## **Case Studies of Models in Action**

To illustrate the effectiveness of models in solving specific problems, let's look at a few case studies from various industries:

### **1. Healthcare: Predicting Patient Readmission**

A healthcare provider utilized a regression model to predict which patients were at high risk of readmission within 30 days of discharge. By analyzing patient demographics, medical history, and post-discharge care, they were able to implement targeted interventions, reducing readmission rates by 20%.

### **2. E-commerce: Customer Segmentation**

An e-commerce platform employed clustering models to segment their customer base into distinct groups based on purchasing habits and demographics. This enabled them to tailor marketing campaigns for each segment, resulting in a 15% increase in conversion rates.

### **3. Finance: Fraud Detection**

A financial institution implemented anomaly detection models to identify fraudulent transactions in real-time. By analyzing transaction patterns, the model flagged suspicious activities, leading to a 30% reduction in fraud cases.

## **Challenges in Model Implementation**

While models offer significant advantages, implementing them is not without challenges. Some common issues include:

1. Data Quality: Models require high-quality, relevant data to function effectively. Poor data quality can lead to inaccurate predictions.

2. Overfitting and Underfitting: Striking the right balance between a model's complexity and its

ability to generalize to unseen data is a common challenge.

3. Interpretability: Many advanced models, especially in deep learning, can be difficult to interpret, making it hard for stakeholders to understand decision-making processes.

4. Ethical Considerations: The use of models, particularly in sensitive areas like hiring or law enforcement, raises ethical concerns regarding bias and fairness.

## **Future Trends in Modeling**

As technology evolves, so do the capabilities of models. Some future trends to consider include:

- Automated Machine Learning (AutoML): Simplifying the model-building process, making it more accessible to non-experts.
- Explainable AI (XAI): Developing models that provide clear explanations of their predictions, enhancing trust and transparency.
- Integration of AI with IoT: Leveraging models to analyze data from connected devices in real-time, driving smarter decision-making.

## **Conclusion**

In conclusion, models serve as powerful tools for solving a myriad of problems across various domains. By understanding the specific challenges they address, organizations can make informed decisions about which models to implement. Whether through predictive analytics, classification tasks, or natural language processing, the right model can unlock new opportunities and drive substantial business value. As technology continues to advance, the potential for models to solve even more complex problems will only grow, making them an integral part of the future landscape of data-driven decision-making.

## **Frequently Asked Questions**

### **What problem does the model address in natural language processing?**

The model addresses the problem of understanding and generating human language, enabling applications like chatbots, translation services, and sentiment analysis.

### **How does the model help in image recognition tasks?**

The model helps by identifying patterns and features in images, allowing for accurate classification and object detection in various applications such as autonomous driving and medical imaging.

## **What problem does the model solve in predictive analytics?**

The model solves the problem of forecasting future trends and behaviors by analyzing historical data, which is crucial for decision-making in business and finance.

## **In what way does the model improve recommendation systems?**

The model improves recommendation systems by analyzing user preferences and behaviors, allowing for personalized suggestions that enhance user experience and engagement.

## **What challenges does the model overcome in anomaly detection?**

The model overcomes challenges in anomaly detection by accurately identifying outliers and unusual patterns in data, which is vital for fraud detection and network security.

## **How does the model contribute to healthcare diagnostics?**

The model contributes to healthcare diagnostics by analyzing medical data to assist in identifying diseases and predicting patient outcomes, leading to better treatment plans.

## **What problem does the model address in financial forecasting?**

The model addresses the problem of predicting market trends and stock prices, helping investors make informed decisions based on analyzed data.

## **How does the model enhance customer service operations?**

The model enhances customer service operations by automating responses and providing real-time assistance, improving efficiency and customer satisfaction.

## **What role does the model play in climate modeling?**

The model plays a crucial role in climate modeling by simulating environmental conditions and predicting climate changes, aiding in research and policy-making.

Find other PDF article:

<https://soc.up.edu.ph/02-word/pdf?docid=qVq18-8887&title=7-principles-of-fat-burning.pdf>

## **What Problem Does The Model**

**Download Microsoft Office LTSC 2024 Volume License Pack fro...**

Sep 16, 2024 · This download is needed for administrators to set up activation for volume license

editions of Office LTSC ...

*Deploy Office LTSC 2024 - Office | Microsoft Learn*

Oct 11, 2024 · For example, if you download Office LTSC Professional Plus 2024, the download will also include ...

*how to download office professional plus ltsc 2024 - M...*

5 days ago · Office LTSC is volume license products for large organizations, such as corporations. Talk to the retailer. If you ...

Download, install, or reinstall Microsoft 365 or Office 2024 o...

Learn how to install, reinstall, or activate Microsoft 365 or Office 2024 on a PC or Mac.

**Download Microsoft Office 2024 LTSC (Full Guide) - TechViral**

Apr 21, 2024 · How to Update Microsoft Office LTSC 2024 The updates of Microsoft Office LTSC preview products usually ...

**i want to get into yahoo mail but microsoft edge wont let me just ...**

After doing this, relaunch the Microsoft Edge browser, then try accessing Yahoo Mail again. I hope this information can help you. Let me know if this works for you. I look forward to your reply.

Display font (NOT default composing font) suddenly changed. : ...

Jul 4, 2023 · A couple weeks ago or so, the default DISPLAY font changed to this, it looks like Impact, or some other condensed bold font. Windows and Firefox...

**How do you send high priority emails in yahoo? - Answers**

Dec 27, 2024 · In Yahoo Mail, you can send high priority emails by marking them as "High Importance." When composing a new email, click on the three dots in the toolbar at the bottom ...

**How can you find out the correct URL of Yahoo Mail? - Answers**

Feb 3, 2025 · Can you access Yahoo without using a yahoo.com URL? You could forward your Yahoo mail to another webmail account that you can access (AOL, Gmail, Hotmail and many ...

**how much is yahoo premium support before I call? : r/yahoo**

Jan 12, 2023 · Hi. Our phone support agents will provide you information about the support subscription. In case they can assist you and you decide to get this subscription, you can ...

*Can anyone Help me with my email? : r/yahoo - Reddit*

Jan 16, 2023 · Identify the percentage of storage used in Yahoo Mail You have 1TB of storage available in Yahoo Mail. That's equal to 1000GBs! You can find out how much storage you're ...

**PSA: email log in loop fix for yahoo/att problems : r/yahoo - Reddit**

Apr 30, 2022 · I appear to have gotten this. I have an At&t email address and a Yahoo email address. Antytime i try to log into Yahoo mail, it automatically redirects me to AT&T mail.

**Why is yahoo mail down? : r/yahoo - Reddit**

Apr 13, 2023 · The only reason we are aware of it is because of dwnndetector and the single solitary post on this SubReddit by Yahoo-CustomerCare below. This is pretty embarrassing ...

**"Too Many Failed attempts" in yahoo email : r/yahoo - Reddit**

Jun 30, 2023 · Yahoo is an absolute shitshow Apparently my account is blocked because of too many

attempts (repeatedly over the past month), which unless a bot/hacker somewhere is ...

[Yahoo Mail on Classic Outlook 365 Windows 11 - Can't connect to ...](#)

Feb 12, 2025 · I realize that you've encountered a problem when connecting your Yahoo Mail on Classic Outlook for Windows. According to your description, you can connect this account ...

Discover what problem the model addresses and how it impacts various fields. Uncover insights and solutions in our detailed article. Learn more now!

[Back to Home](#)