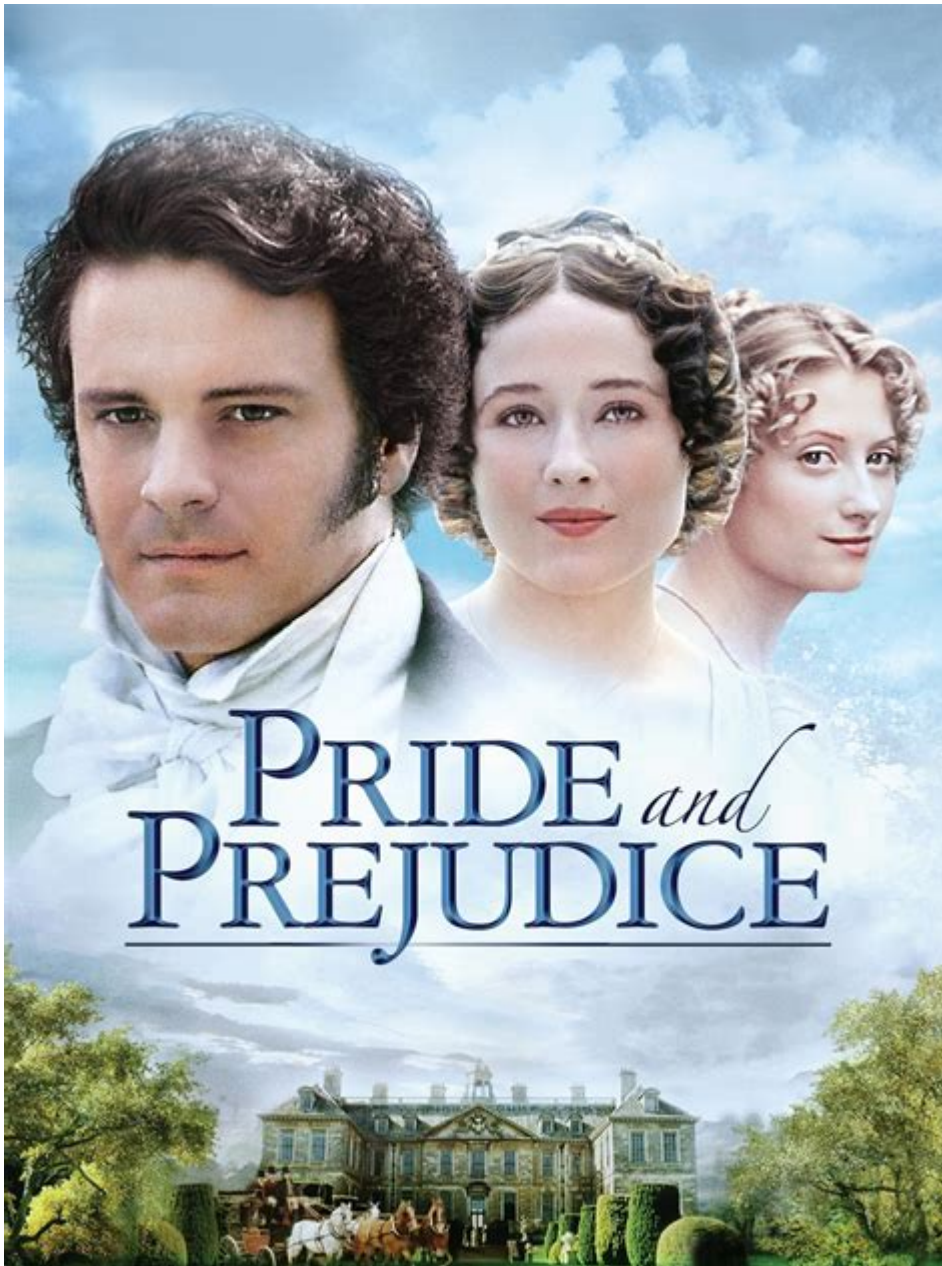


What Is The Pride And Prejudice About



PRIDE AND PREJUDICE IS A CLASSIC NOVEL WRITTEN BY JANE AUSTEN, FIRST PUBLISHED IN 1813. IT HAS CAPTURED THE HEARTS OF READERS FOR OVER TWO CENTURIES WITH ITS TIMELESS THEMES, ENGAGING CHARACTERS, AND SHARP SOCIAL COMMENTARY. AT ITS CORE, THE STORY FOLLOWS THE LIFE AND ROMANTIC ENTANGLEMENTS OF ELIZABETH BENNET, THE INTELLIGENT AND HEADSTRONG SECOND DAUGHTER IN A FAMILY OF FIVE SISTERS. THE NOVEL EXPLORES THE INTRICACIES OF LOVE AND RELATIONSHIPS, THE CONSTRAINTS OF SOCIAL CLASS, AND THE IMPORTANCE OF SELF-AWARENESS AND PERSONAL GROWTH.

BACKGROUND OF THE NOVEL

JANE AUSTEN WAS BORN IN 1775 IN HAMPSHIRE, ENGLAND, AND WAS PART OF A SOCIAL CLASS THAT VALUED PROPRIETY, RESPECTABILITY, AND MARRIAGE AS A MEANS OF SECURING ONE'S SOCIAL STANDING. SHE BEGAN WRITING AT A YOUNG AGE AND PUBLISHED HER FIRST NOVEL, *SENSE AND SENSIBILITY*, IN 1811. FOLLOWING ITS SUCCESS, AUSTEN RELEASED *PRIDE AND PREJUDICE*, WHICH HAS SINCE BECOME HER MOST BELOVED WORK. THE NOVEL REFLECTS THE SOCIETAL NORMS AND EXPECTATIONS OF REGENCY-ERA ENGLAND, PARTICULARLY REGARDING THE ROLES OF WOMEN AND MARRIAGE.

PLOT SUMMARY

PRIDE AND PREJUDICE IS SET IN RURAL ENGLAND AND FOLLOWS THE LIVES OF THE BENNET FAMILY. THE PRIMARY PLOT REVOLVES AROUND ELIZABETH BENNET AND HER EVOLVING RELATIONSHIP WITH THE WEALTHY AND RESERVED MR. DARCY. THE STORY UNFOLDS THROUGH VARIOUS SOCIAL INTERACTIONS, MISUNDERSTANDINGS, AND REVELATIONS THAT CHALLENGE THE CHARACTERS' PRECONCEIVED NOTIONS ABOUT EACH OTHER.

MAIN CHARACTERS

SEVERAL KEY CHARACTERS DRIVE THE NARRATIVE, EACH CONTRIBUTING TO THE CENTRAL THEMES OF PRIDE, PREJUDICE, AND PERSONAL GROWTH:

1. ELIZABETH BENNET - THE NOVEL'S PROTAGONIST, ELIZABETH IS WITTY, INTELLIGENT, AND UNAFRAID TO SPEAK HER MIND. SHE VALUES SELF-RESPECT AND IS CRITICAL OF SOCIETAL NORMS.
2. MR. FITZWILLIAM DARCY - INITIALLY PRESENTED AS PROUD AND ALOOF, DARCY UNDERGOES SIGNIFICANT CHARACTER DEVELOPMENT THROUGHOUT THE STORY. HIS INITIAL ARROGANCE HIDES A DEEPLY CARING NATURE.
3. MR. BENNET - THE SARCASTIC FATHER OF THE BENNET SISTERS, MR. BENNET PROVIDES COMIC RELIEF BUT IS OFTEN DETACHED FROM FAMILY AFFAIRS.
4. MRS. BENNET - THE OVERLY ANXIOUS MOTHER, MRS. BENNET IS OBSESSED WITH MARRYING OFF HER DAUGHTERS TO SECURE THEIR FUTURES.
5. JANE BENNET - THE ELDEST BENNET SISTER, JANE EMBODIES KINDNESS AND BEAUTY, OFTEN SEEN AS THE IDEAL WOMAN OF HER TIME.
6. MR. BINGLEY - DARCY'S WEALTHY FRIEND, BINGLEY IS CHARMING AND AMICABLE, SERVING AS A CONTRAST TO DARCY'S INITIAL DEMEANOR.
7. LYDIA BENNET - THE YOUNGEST BENNET SISTER, LYDIA IS IMPULSIVE AND NAIVE, REPRESENTING THE POTENTIAL CONSEQUENCES OF UNCHECKED YOUTHFUL BEHAVIOR.

MAJOR THEMES

THE NOVEL EXPLORES SEVERAL ENDURING THEMES THAT CONTRIBUTE TO ITS RICHNESS AND DEPTH:

1. PRIDE AND PREJUDICE: THE TITLE ITSELF REFERS TO THE MAIN CHARACTERISTICS OF THE PROTAGONISTS. DARCY'S PRIDE AND ELIZABETH'S PREJUDICE AGAINST HIM CREATE BARRIERS THAT THEY MUST OVERCOME TO UNDERSTAND AND LOVE EACH OTHER.
2. MARRIAGE AND SOCIAL STATUS: AUSTEN CRITIQUES THE INSTITUTION OF MARRIAGE AND THE PRESSURE ON WOMEN TO MARRY WELL FOR FINANCIAL SECURITY RATHER THAN LOVE. THE VARIOUS MARRIAGES DEPICTED IN THE NOVEL SERVE AS REFLECTIONS ON DIFFERENT MOTIVATIONS BEHIND MARRIAGE.
3. INDIVIDUAL GROWTH AND SELF-DISCOVERY: ELIZABETH'S JOURNEY IS ONE OF SELF-AWARENESS. SHE LEARNS TO RECOGNIZE HER OWN BIASES AND PREJUDICES, ULTIMATELY LEADING TO PERSONAL GROWTH AND MATURITY.
4. CLASS AND SOCIETY: THE NOVEL HIGHLIGHTS THE RIGID CLASS STRUCTURE OF EARLY 19TH-CENTURY ENGLAND AND HOW IT AFFECTS SOCIAL INTERACTIONS AND PERCEPTIONS.

SYMBOLISM AND MOTIFS

AUSTEN EMPLOYS VARIOUS SYMBOLS AND MOTIFS THROUGHOUT PRIDE AND PREJUDICE TO REINFORCE ITS THEMES:

LETTERS

LETTERS SERVE AS A CRITICAL MEANS OF COMMUNICATION WITHIN THE STORY AND SYMBOLIZE BOTH THE MISCOMMUNICATION AND REVELATIONS THAT OCCUR BETWEEN CHARACTERS. FOR EXAMPLE, MR. DARCY'S LETTER TO ELIZABETH EXPLAINS HIS

ACTIONS AND FEELINGS, LEADING TO HER REEVALUATION OF HIM.

LAND AND PROPERTY

THE SIGNIFICANCE OF LAND OWNERSHIP AND WEALTH IS EVIDENT IN THE NOVEL. CHARACTERS LIKE MR. COLLINS REPRESENT THE ABSURDITY OF SOCIAL STATUS DERIVED FROM PROPERTY, WHILE THE BENNET SISTERS FACE THE THREAT OF LOSING THEIR HOME AFTER THEIR FATHER'S DEATH DUE TO THE ENTAILMENT.

BALLROOM SCENES

THE VARIOUS SOCIAL GATHERINGS AND BALLS ARE NOT JUST SETTINGS FOR ROMANCE BUT ALSO SERVE AS A COMMENTARY ON SOCIAL HIERARCHY, BEHAVIOR, AND THE COMPLEXITIES OF RELATIONSHIPS. THESE SCENES ILLUSTRATE THE IMPORTANCE OF REPUTATION AND SOCIAL STANDING.

LITERARY STYLE AND TECHNIQUES

AUSTEN'S DISTINCTIVE WRITING STYLE IN PRIDE AND PREJUDICE COMBINES IRONY, WIT, AND KEEN SOCIAL OBSERVATION. HER USE OF FREE INDIRECT DISCOURSE ALLOWS READERS TO SEE EVENTS THROUGH THE PERSPECTIVES OF VARIOUS CHARACTERS, PARTICULARLY ELIZABETH. THIS TECHNIQUE CREATES A MORE INTIMATE UNDERSTANDING OF THEIR THOUGHTS AND FEELINGS.

DIALOGUE

THE DIALOGUE IN THE NOVEL IS SHARP AND REVEALING, OFTEN LOADED WITH SUBTEXT. CHARACTERS' INTERACTIONS PROVIDE INSIGHT INTO THEIR PERSONALITIES AND RELATIONSHIPS, ALLOWING READERS TO INFER HIDDEN MEANINGS AND SOCIAL DYNAMICS.

IRONY

AUSTEN'S USE OF IRONY, ESPECIALLY SITUATIONAL IRONY, ADDS DEPTH TO THE NARRATIVE. THE CONTRAST BETWEEN CHARACTERS' PERCEPTIONS AND REALITY OFTEN LEADS TO HUMOROUS SITUATIONS, SERVING AS A CRITIQUE OF SOCIETAL NORMS.

CRITICAL RECEPTION AND LEGACY

UPON ITS PUBLICATION, PRIDE AND PREJUDICE RECEIVED MIXED REVIEWS, BUT OVER TIME, IT HAS GAINED IMMENSE POPULARITY AND IS NOW CONSIDERED ONE OF THE GREATEST NOVELS IN ENGLISH LITERATURE. ITS EXPLORATION OF SOCIAL ISSUES, COMPLEX CHARACTERS, AND THE NUANCES OF HUMAN RELATIONSHIPS RESONATE WITH READERS ACROSS GENERATIONS.

THE NOVEL HAS INSPIRED NUMEROUS ADAPTATIONS, INCLUDING FILMS, TELEVISION SERIES, AND STAGE PRODUCTIONS. SOME NOTABLE ADAPTATIONS INCLUDE:

1. PRIDE AND PREJUDICE (2005) - A FILM STARRING KEIRA KNIGHTLEY AND MATTHEW MACFADYEN THAT RECEIVED CRITICAL ACCLAIM FOR ITS CINEMATOGRAPHY AND PERFORMANCES.
2. PRIDE AND PREJUDICE (1995) - A BBC MINISERIES FEATURING COLIN FIRTH AS MR. DARCY, WHICH REMAINS ONE OF THE MOST BELOVED ADAPTATIONS.
3. MODERN RETELLINGS - VARIOUS AUTHORS HAVE ADAPTED THE STORY INTO CONTEMPORARY SETTINGS, ALLOWING NEW AUDIENCES TO ENGAGE WITH THE TIMELESS THEMES OF LOVE AND SOCIAL COMMENTARY.

CONCLUSION

IN CONCLUSION, PRIDE AND PREJUDICE IS NOT MERELY A LOVE STORY; IT IS A PROFOUND EXPLORATION OF SOCIETAL EXPECTATIONS, INDIVIDUAL GROWTH, AND THE COMPLEXITIES OF HUMAN RELATIONSHIPS. THROUGH THE LENS OF ELIZABETH BENNET AND MR. DARCY, JANE AUSTEN PRESENTS A NARRATIVE THAT CHALLENGES READERS TO REFLECT ON THEIR OWN PREJUDICES AND THE IMPORTANCE OF SELF-AWARENESS. THE NOVEL'S ENDURING APPEAL LIES IN ITS RICH CHARACTERIZATIONS, SHARP WIT, AND INSIGHTFUL COMMENTARY ON THE HUMAN EXPERIENCE, ENSURING ITS PLACE AS A CORNERSTONE OF ENGLISH LITERATURE FOR GENERATIONS TO COME.

FREQUENTLY ASKED QUESTIONS

WHAT IS THE MAIN THEME OF 'PRIDE AND PREJUDICE'?

'PRIDE AND PREJUDICE' EXPLORES THEMES OF LOVE, SOCIAL CLASS, AND THE IMPORTANCE OF PERSONAL GROWTH. IT EXAMINES HOW FIRST IMPRESSIONS CAN BE MISLEADING AND EMPHASIZES THE VALUE OF UNDERSTANDING AND RESPECT IN RELATIONSHIPS.

WHO ARE THE MAIN CHARACTERS IN 'PRIDE AND PREJUDICE'?

THE MAIN CHARACTERS INCLUDE ELIZABETH BENNET, THE INTELLIGENT AND STRONG-WILLED PROTAGONIST; MR. DARCY, THE WEALTHY AND INITIALLY ALOOF GENTLEMAN; AND OTHER NOTABLE FIGURES LIKE JANE BENNET, MR. BINGLEY, AND LYDIA BENNET, WHO EACH CONTRIBUTE TO THE NOVEL'S EXPLORATION OF RELATIONSHIPS AND SOCIETAL NORMS.

HOW DOES 'PRIDE AND PREJUDICE' ADDRESS SOCIAL CLASS?

'PRIDE AND PREJUDICE' CRITIQUES THE RIGID CLASS STRUCTURES OF EARLY 19TH-CENTURY ENGLAND, SHOWCASING HOW SOCIAL STATUS IMPACTS RELATIONSHIPS AND INDIVIDUAL CHOICES. THE STORY HIGHLIGHTS THE OBSTACLES FACED BY THOSE OF LOWER SOCIAL STANDING AND THE PREJUDICES HELD BY THE ARISTOCRACY.

WHAT ROLE DOES IRONY PLAY IN 'PRIDE AND PREJUDICE'?

IRONY IS A SIGNIFICANT LITERARY DEVICE IN 'PRIDE AND PREJUDICE,' OFTEN USED TO HIGHLIGHT THE DISCREPANCIES BETWEEN APPEARANCE AND REALITY. JANE AUSTEN EMPLOYS IRONY TO CRITIQUE SOCIETAL NORMS AND TO REVEAL THE TRUE NATURE OF HER CHARACTERS, PARTICULARLY IN THEIR MISUNDERSTANDINGS AND EVENTUAL REALIZATIONS.

WHAT IS THE SIGNIFICANCE OF THE TITLE 'PRIDE AND PREJUDICE'?

THE TITLE 'PRIDE AND PREJUDICE' REFERS TO THE TWO MAIN CHARACTER FLAWS THAT LEAD TO MISUNDERSTANDINGS AND CONFLICTS IN THE STORY. MR. DARCY'S PRIDE INITIALLY PREVENTS HIM FROM RECOGNIZING HIS AFFECTION FOR ELIZABETH, WHILE ELIZABETH'S PREJUDICE AGAINST HIM CLOUDS HER JUDGMENT, ILLUSTRATING HOW THESE TRAITS CAN OBSTRUCT PERSONAL CONNECTIONS.

Find other PDF article:

<https://soc.up.edu.ph/39-point/files?dataid=BPG82-3299&title=mark-harris-five-came-back.pdf>

What Is The Pride And Prejudice About

pride_proud_

pride_proud_pride_proud1_pride_proud2_proud

