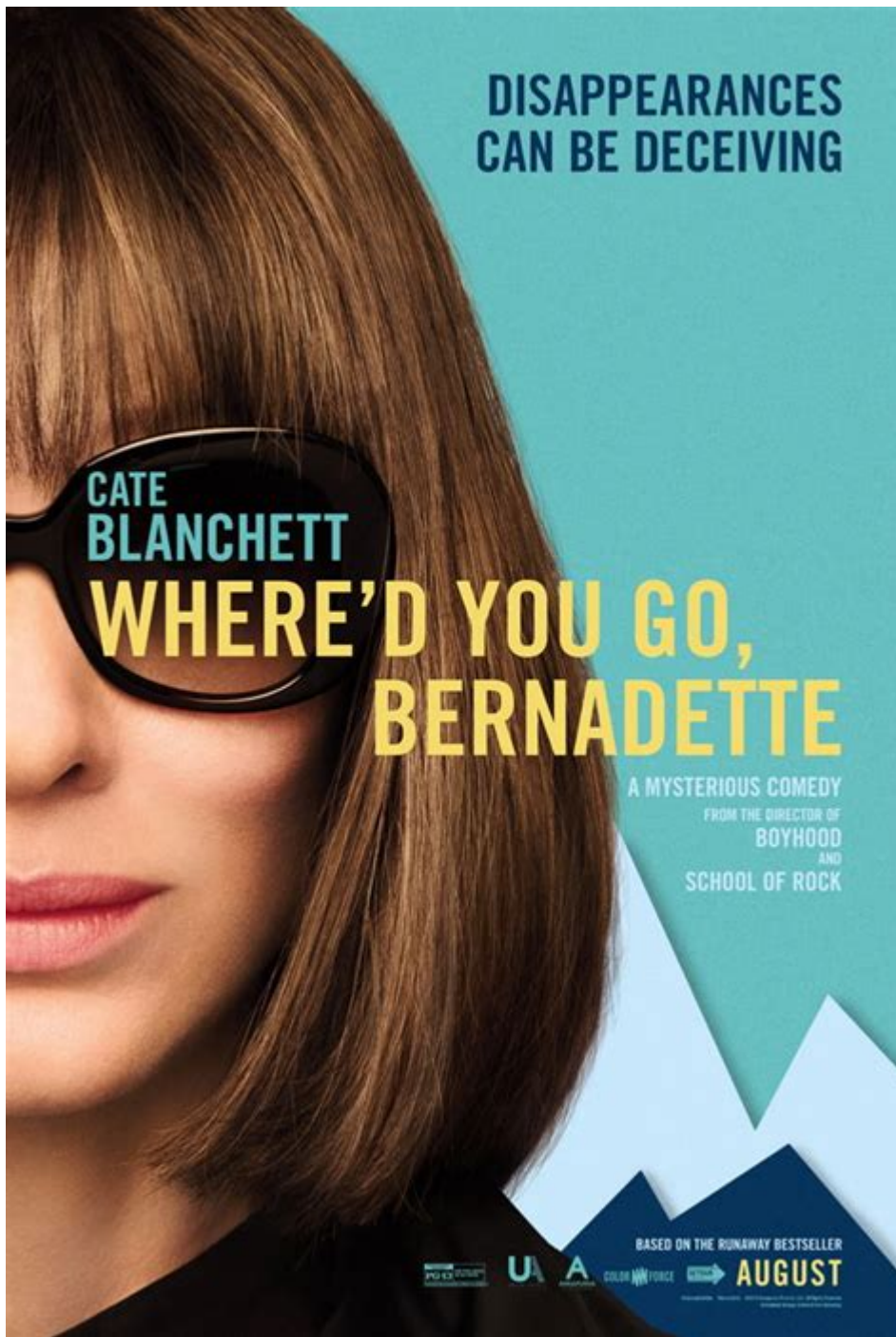


Where D You Go Bernadette Movie



Where'd You Go, Bernadette is a 2019 film directed by Richard Linklater, based on Maria Semple's 2012 novel of the same name. The film stars Cate Blanchett as the titular character, Bernadette Fox, a once-renowned architect who mysteriously disappears just before a family trip to Antarctica. The narrative unfolds from the perspective of her daughter, Bee, played by Emma Nelson, who embarks on a quest to find her mother. This article explores the film's themes, character development, critical reception, and its adaptation from the novel.

Synopsis of the Film

The story begins in Seattle, where Bernadette Fox struggles with her identity and her role as a mother and wife. Once a brilliant architect, she has retreated into a hermit-like existence, overwhelmed by social anxiety and the pressures of suburban life. Her husband, Elgin (Billy Crudup), works for a tech company, and their daughter, Bee, is a bright and ambitious student who idolizes her mother.

As Bee's desire for a family trip to Antarctica grows, Bernadette's fear of the outside world intensifies. The tension culminates when Bernadette disappears, setting Bee on a path to uncover the truth about her mother's past and the reasons behind her sudden vanishing act. The film deftly intertwines themes of motherhood, identity, mental health, and the quest for self-fulfillment.

Character Development

Bernadette Fox

Bernadette is a complex and multi-faceted character. Her journey reflects the struggles many women face in balancing career aspirations with family responsibilities. Initially portrayed as a reclusive figure, the film reveals layers of her personality through flashbacks and Bee's investigations. Bernadette's character is shaped by her past successes and failures, highlighting the societal pressures that can lead to feelings of inadequacy.

Bee Branch

Bee is the emotional core of the film. As a teenager, she navigates her own challenges while trying to understand her mother. Her determination to find Bernadette showcases her maturity and love, as she seeks to reconcile the idealized version of her mother she holds with the reality of Bernadette's struggles. Bee's relationship with her mother is central to the narrative, emphasizing themes of family loyalty and unconditional love.

Supporting Characters

- Elgin Branch: Bernadette's husband, played by Billy Crudup, represents the modern working father. His role highlights the challenges of communication and understanding within a family, especially when mental health issues are involved.
- Audrey: Played by Kristen Wiig, Audrey is Bernadette's neighbor and antagonist, embodying the typical suburban mom persona. Her character serves to contrast Bernadette's unconventional lifestyle.
- The School Community: Various characters from Bee's school provide insight into the

pressures faced by children and their parents in a competitive society.

Themes

Motherhood and Identity

The film explores the theme of motherhood in depth. Bernadette's struggle with her identity as a mother and a professional is a central conflict. The narrative questions societal expectations of women and the sacrifices they often make. Through Bernadette's journey, the film examines the idea that one's identity should not be solely defined by familial roles.

Social Anxiety and Mental Health

Bernadette's character encapsulates the struggles of social anxiety and mental health issues. Her retreat from society represents a larger commentary on how these issues can affect individuals and families. The film highlights the importance of understanding and support, portraying Bernadette's struggles with empathy rather than stigmatization.

The Quest for Self-Fulfillment

The film also addresses the quest for self-fulfillment. Bernadette's disappearance symbolizes a radical act of reclaiming her identity and desires. It prompts viewers to consider the lengths individuals might go to escape societal pressures and rediscover their passions.

Adaptation from the Novel

Maria Semple's novel, published in 2012, received critical acclaim for its humor and poignant commentary on modern life. The film adaptation maintains the essence of the book but makes notable changes:

1. **Narrative Structure:** The novel is told through a series of emails, letters, and documents, giving it a unique format. The film adopts a more traditional narrative style, focusing on visual storytelling.
2. **Character Depth:** While the book provides insight into several supporting characters, the film narrows its focus primarily on Bernadette and Bee. This choice allows for a deeper exploration of their relationship but sacrifices some of the novel's broader social commentary.
3. **Tone:** The novel balances humor and seriousness, while the film leans more towards a heartfelt drama, emphasizing emotional depth and character development.

Critical Reception

The film received mixed reviews from critics and audiences alike.

Positive Aspects

- Cate Blanchett's Performance: Critics praised Blanchett's portrayal of Bernadette, noting her ability to capture the character's complexity and emotional turmoil.
- Visual Aesthetics: Richard Linklater's direction received acclaim for its visual storytelling, particularly in depicting Seattle's beauty and the vibrant landscapes of Antarctica.
- Themes and Messages: Many reviewers appreciated the film's exploration of motherhood, mental health, and the search for identity, recognizing its relevance in contemporary society.

Criticism

Conversely, some critics pointed out:

- Pacing Issues: The film's pacing was criticized for being uneven, with some viewers feeling that certain plot points were rushed or lacked depth.
- Comparisons to the Novel: Fans of Semple's book expressed disappointment in the film's deviation from the source material, feeling that it did not capture the novel's wit and charm.

Conclusion

Where'd You Go, Bernadette is a film that resonates with audiences through its exploration of complex themes such as motherhood, identity, and mental health. While it may not fully capture the spirit of Maria Semple's novel, it offers a poignant narrative that encourages viewers to reflect on their own lives and relationships. The film stands as a testament to the struggles many face in the pursuit of self-fulfillment, making it a relevant and thought-provoking piece in contemporary cinema. Through the lens of Bernadette's journey, the film invites us all to consider what it means to truly find ourselves amidst the chaos of life.

Frequently Asked Questions

What is the main plot of 'Where'd You Go, Bernadette'?

'Where'd You Go, Bernadette' follows the story of Bernadette Fox, an architect who mysteriously disappears before a family trip to Antarctica, prompting her daughter Bee to

embark on a quest to find her.

Who stars in the lead role of Bernadette in the movie?

Cate Blanchett stars in the lead role of Bernadette Fox.

Is 'Where'd You Go, Bernadette' based on a book?

Yes, the movie is based on the 2012 novel of the same name by Maria Semple.

What themes are explored in 'Where'd You Go, Bernadette'?

The film explores themes of motherhood, mental health, identity, and the pressures of suburban life.

Who directed 'Where'd You Go, Bernadette'?

The film was directed by Richard Linklater.

What is the significance of the Antarctica trip in the movie?

The Antarctica trip represents a chance for the family to reconnect and escape their chaotic lives, while also serving as a backdrop for Bernadette's internal struggles.

How was the movie received by critics?

The movie received mixed reviews from critics, with some praising Cate Blanchett's performance while others felt the adaptation did not capture the book's spirit.

What can viewers learn from Bernadette's character?

Viewers can learn about the complexities of balancing personal aspirations with familial responsibilities, as well as the importance of seeking help and understanding one's own mental health.

Find other PDF article:

<https://soc.up.edu.ph/67-blur/Book?dataid=OAV69-3253&title=worksheets-for-esl-students-beginners.pdf>

...

-
 2025-02-19 ·

bigbang
Aug 15, 2014 · bigbang BigBang Ye the finally I realize that I'm nothing without you I ...

dpi -
Oct 29, 2024 · dpi DPI dpi cpi
 ...

-
 A B C D E F G H ...

;) ;D XD : (? _
 “ ” :);D XD (90° 90°
 ...

-
 2025-02-19 ·

bigbang
Aug 15, 2014 · bigbang BigBang Ye the finally I realize that I'm nothing without you I was so ...

dpi -
Oct 29, 2024 · dpi DPI dpi cpi
 ...

-
 A B C D E F G H ...

www.baidu.com
Aug 11, 2024 · www.baidu.com
 ...

Feb 28, 2025 · https://pan.baidu.com/ ...

bip **http://bip.countrygarden.com.cn/** ...
 17 2022-06-07 · TA 1.3

-
 2024-12-20 ·

-
Dec 5, 2024 · ICP 030173-1 2023 1034-029 ©2025Baidu | |

Discover the magic of "Where'd You Go

[Back to Home](#)