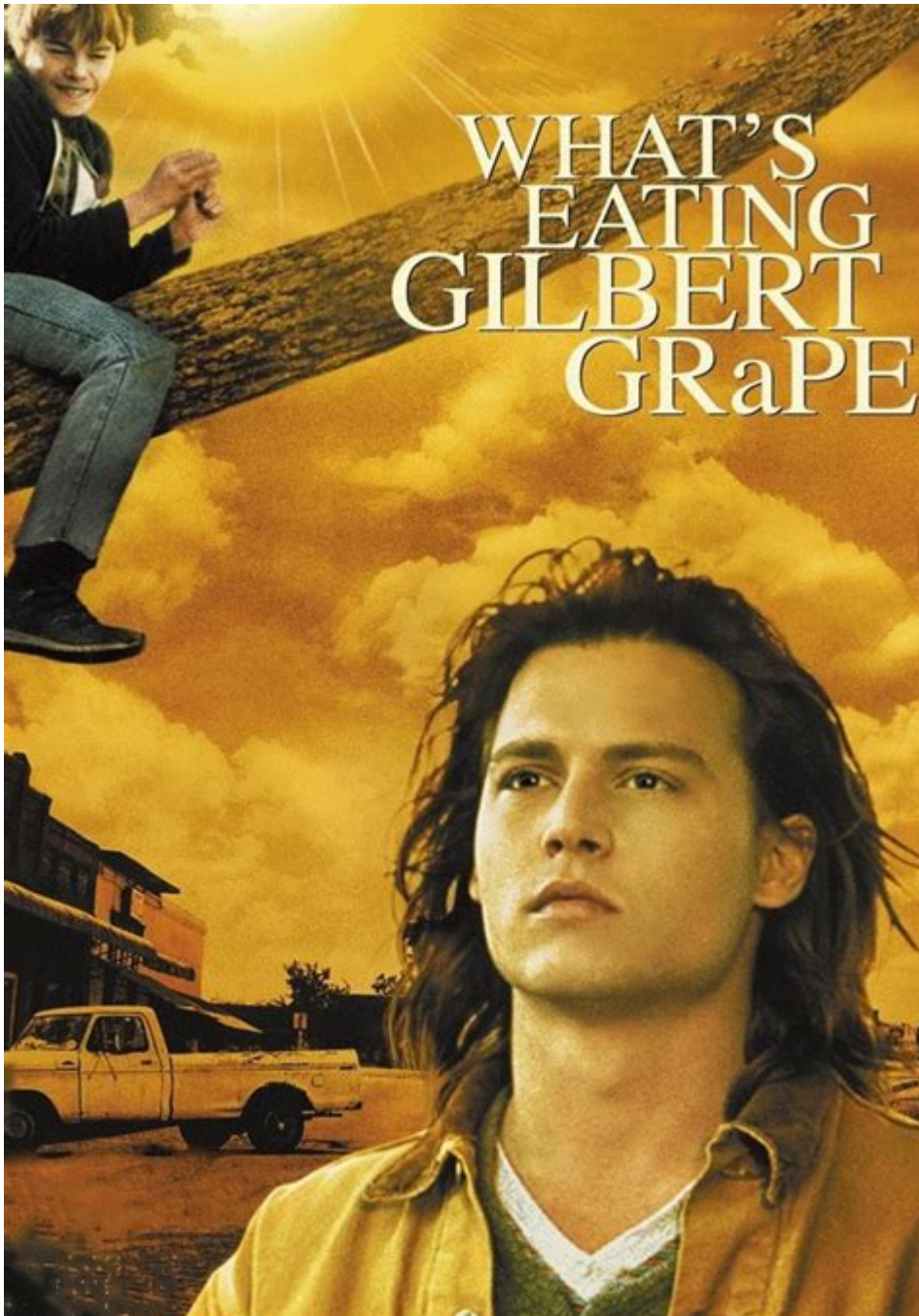


Whats Eating Gilbert Grape Parents Guide



Whats Eating Gilbert Grape Parents Guide is essential for families considering watching this poignant drama. Released in 1993 and directed by Lasse Hallström, the film stars Johnny Depp as Gilbert Grape, a young man taking care of his intellectually disabled brother, Arnie, played by Leonardo DiCaprio. The story unfolds in a small town where Gilbert grapples with family responsibilities, personal dreams, and the complexities of life. This article will provide a comprehensive overview of the film, focusing on its themes, content, and important factors to consider for parents and guardians.

Overview of the Film

Plot Summary

"What's Eating Gilbert Grape" follows the life of Gilbert, who feels trapped in his small town, burdened by the responsibilities of caring for his family. His mother, Bonnie, is morbidly obese and has become a recluse since the death of Gilbert's father. Arnie, his younger brother, requires constant supervision due to his developmental challenges. As Gilbert struggles to manage these responsibilities, he finds solace in a budding romance with a traveler named Becky, played by Juliette Lewis.

Main Themes

The film explores several significant themes, including:

- **Family Dynamics:** The pressures of family obligations and the complexity of caring for loved ones.
- **Coming of Age:** Gilbert's journey toward self-discovery and independence.
- **Mental Health:** The depiction of intellectual disabilities and their impact on family life.
- **Love and Relationships:** The importance of connection and personal freedom.

Content Considerations for Parents

When evaluating "What's Eating Gilbert Grape" for younger audiences, it's crucial to consider the film's

content. Here are some key factors to keep in mind:

Language

The film contains mild profanity, including occasional uses of the “f-word” and other swear words. While the language is not excessive and serves to convey the characters' emotions, it may not be suitable for all children.

Substance Use

There are scenes depicting the use of alcohol, particularly in a social context. Gilbert's interactions with friends and family occasionally involve drinking, which might raise concerns for parents who prefer to avoid exposing their children to substance use.

Thematic Elements

The film addresses several mature themes, including:

- **Intellectual Disability:** Arnie's character and his challenges are central to the plot, which may require explanation for younger viewers.
- **Body Image:** The portrayal of Gilbert's mother raises issues related to self-esteem and body image.
- **Death and Grief:** The film touches on themes of loss, highlighting how the family copes with the death of Gilbert's father.

Age Appropriateness

Determining the appropriate age for viewing "Whats Eating Gilbert Grape" can depend significantly on the maturity of the child. The film is generally rated PG-13 for thematic elements, which suggests it may not be suitable for children under 13 without parental guidance. Here are some recommendations:

Suggested Age Group

- Ages 13 and Up: The film can be suitable for teenagers who can understand and discuss the film's deeper themes, such as family dynamics and personal struggles.
- Ages 10-12: Younger viewers may watch the film, but parental guidance is recommended to address sensitive topics and language.

Parental Guidance Tips

If you decide to watch the film with your children, consider the following tips:

1. Prepare for Discussion: Before watching, discuss with your children the film's themes, such as family responsibility and the importance of understanding different abilities.
2. Watch Together: Viewing the film as a family provides an opportunity to engage in conversation about the content, allowing for questions and clarifications.
3. Address Sensitive Topics: Be ready to talk about the heavier themes, such as grief and mental health, and how they relate to real-life experiences.
4. Encourage Empathy: Use the film as a tool to foster empathy and understanding towards individuals with disabilities and those facing personal challenges.

Conclusion

In conclusion, **Whats Eating Gilbert Grape Parents Guide** serves as an invaluable resource for families considering this thought-provoking film. While it presents a touching and authentic portrayal of family life and personal struggles, parents should be aware of the language, substance use, and mature themes throughout the film. By preparing for potential discussions and watching together, families can fully appreciate the emotional depth of Gilbert's journey and the lessons it imparts about love, responsibility, and self-discovery.

Frequently Asked Questions

What age group is 'What's Eating Gilbert Grape' suitable for?

The film is generally rated PG-13, indicating it's suitable for viewers aged 13 and older due to thematic elements and some language.

Does 'What's Eating Gilbert Grape' contain any mature themes?

Yes, the film addresses mature themes such as mental illness, family struggles, and the challenges of small-town life.

Are there any scenes in 'What's Eating Gilbert Grape' that parents should be aware of?

Parents should note scenes involving emotional distress, references to death, and depictions of a character with developmental disabilities.

Is there any substance use depicted in 'What's Eating Gilbert Grape'?

Yes, the film includes some mild references to substance use, particularly related to the character Gilbert's coping mechanisms.

What positive messages can be found in 'What's Eating Gilbert Grape'?

The film highlights themes of family loyalty, the importance of communication, and the challenges of accepting oneself and others.

Should parents watch 'What's Eating Gilbert Grape' with their children?

It may be beneficial for parents to watch the film with their children to facilitate discussions about its complex themes and characters.

Find other PDF article:

<https://soc.up.edu.ph/39-point/Book?docid=wWc25-3068&title=manual-arts-high-school-football.pdf>

Whats Eating Gilbert Grape Parents Guide

Why Does A Calendar Event/Invite show unrelated files next to the ...

Oct 28, 2024 · Dear Jolene Moon, Good day! Thank you for posting in the Microsoft Community. We'll be happy to help! First of all, we apologize for the inconvenience caused to your work. ...

“•” -

Dec 27, 2022 · “•” Word WPS ... Word WPS ...

what's the meaning? what's ...

What's meaning What's the meaning? What is the meaning? What the meaning of (+this word, this ...

Why can everyone see my calendar? even though I don't invite ...

What I put in my calendar everyone in the office can see it even though I do not invite them. I want people who I invite to see what I put in the calendar not everything. Can someone please help me

ics, _

Oct 4, 2024 · ics, ics ICS ...

Keybd has no Break/Pause ... how do I work around? - Microsoft ...

Nov 25, 2010 · I have a Studio xps 16. It is missing a number of keys found on other Dell keyboards

such as Pause, Break, ScrollLock, Numlock etc. I am doing some software ...

Finding out where the Windows 10 lock screen photos are from ...

Jul 16, 2024 · After unsuccessfully trying many responses in other threads to find out where the photos were taken that are used in Windows Spotlight and the Windows lock screen images, I ...

1000100 - 10000

1000100: 1.power overwhelming = 2.operation CWAL= 3.show me the money = 10,000 4.the gathering = psionic stuff ...

What is Dokan Library? - Microsoft Community

After giving my computer some much-needed updates, I have stumbled upon this in my programs directory in the Control Panel. What is Dokan Library? Is it okay to delete it, or does my ...

whats -

May 14, 2025 · whats WhatsApp ...

Why Does A Calendar Event/Invite show unrelated files next to ...

Oct 28, 2024 · Dear Jolene Moon, Good day! Thank you for posting in the Microsoft Community. We'll be happy to help! First of all, we apologize for the inconvenience caused to your work. ...

“•” -

Dec 27, 2022 · “•” Word WPS ...

what's the meaning? what's ...

What's meaning What's the meaning? What is the meaning? What the meaning of (+this word, this ...

Why can everyone see my calendar? even though I don't invite ...

What I put in my calendar everyone in the office can see it even though I do not invite them. I want people who I invite to see what I put in the calendar not everything. Can someone please help me

ics, _

Oct 4, 2024 · ics, ics ICS ...

Keybd has no Break/Pause ... how do I work around? - Microsoft ...

Nov 25, 2010 · I have a Studio xps 16. It is missing a number of keys found on other Dell keyboards such as Pause, Break, ScrollLock, Numlock etc. I am doing some software ...

Finding out where the Windows 10 lock screen photos are from ...

Jul 16, 2024 · After unsuccessfully trying many responses in other threads to find out where the photos were taken that are used in Windows Spotlight and the Windows lock screen images, I ...

1000100 - 10000

1000100: 1.power overwhelming = 2.operation CWAL= 3.show me the money = 10,000 4.the gathering = psionic stuff ...

What is Dokan Library? - Microsoft Community

After giving my computer some much-needed updates, I have stumbled upon this in my programs directory in the Control Panel. What is Dokan Library? Is it okay to delete it, or does my ...

whats -
May 14, 2025 · whats WhatsApp
 ...

Discover the essential 'What's Eating Gilbert Grape' parents guide. Explore themes

[Back to Home](#)