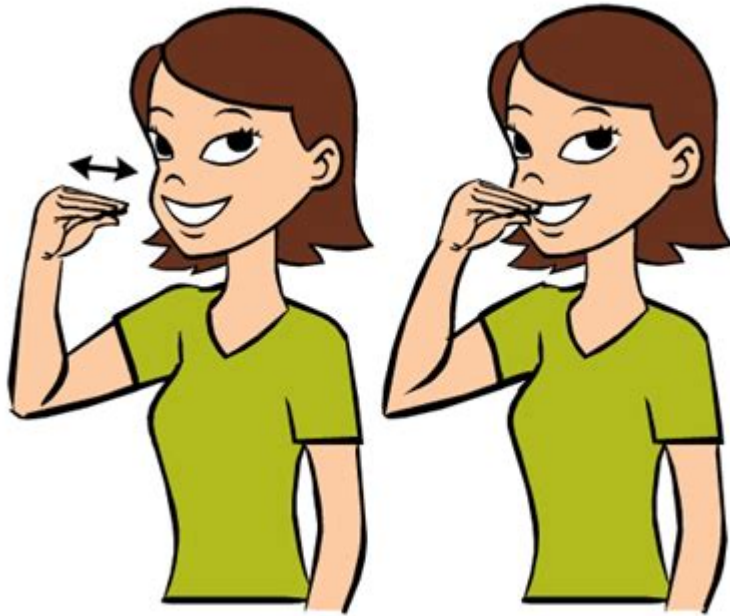


What Is Sign Language For Eat



WHAT IS SIGN LANGUAGE FOR EAT? SIGN LANGUAGE IS A POWERFUL FORM OF COMMUNICATION THAT ALLOWS INDIVIDUALS, PARTICULARLY THOSE WHO ARE DEAF OR HARD OF HEARING, TO EXPRESS THEIR THOUGHTS, FEELINGS, AND NEEDS USING HAND SIGNS, FACIAL EXPRESSIONS, AND BODY LANGUAGE. THE SIGN FOR "EAT" IS AN ESSENTIAL PART OF THIS VISUAL LANGUAGE, AS IT REPRESENTS A FUNDAMENTAL HUMAN ACTIVITY. IN THIS ARTICLE, WE WILL EXPLORE THE NUANCES OF THIS SIGN, HOW TO EXECUTE IT CORRECTLY, AND ITS SIGNIFICANCE WITHIN THE BROADER CONTEXT OF SIGN LANGUAGE.

UNDERSTANDING SIGN LANGUAGE

SIGN LANGUAGE IS NOT A UNIVERSAL LANGUAGE; INSTEAD, THERE ARE VARIOUS FORMS OF SIGN LANGUAGE ACROSS DIFFERENT CULTURES AND REGIONS. EACH HAS ITS OWN GRAMMAR, SYNTAX, AND VOCABULARY. THE MOST WELL-KNOWN FORMS INCLUDE AMERICAN SIGN LANGUAGE (ASL), BRITISH SIGN LANGUAGE (BSL), AND MANY OTHERS. LEARNING SIGN LANGUAGE CAN SIGNIFICANTLY IMPROVE COMMUNICATION WITH THE DEAF COMMUNITY AND ENHANCE OVERALL COMMUNICATION SKILLS.

WHY LEARN SIGN LANGUAGE?

MANY PEOPLE CHOOSE TO LEARN SIGN LANGUAGE FOR VARIOUS REASONS, INCLUDING:

- **COMMUNICATION WITH THE DEAF COMMUNITY:** LEARNING SIGN LANGUAGE ALLOWS INDIVIDUALS TO COMMUNICATE EFFECTIVELY WITH DEAF FRIENDS, FAMILY MEMBERS, OR COLLEAGUES.
- **INCLUSIVITY:** KNOWING SIGN LANGUAGE PROMOTES INCLUSIVITY AND HELPS BRIDGE COMMUNICATION GAPS.
- **CAREER OPPORTUNITIES:** MANY PROFESSIONS, SUCH AS EDUCATION, HEALTHCARE, AND SOCIAL WORK, BENEFIT FROM EMPLOYEES WHO CAN COMMUNICATE IN SIGN LANGUAGE.
- **COGNITIVE BENEFITS:** LEARNING A NEW LANGUAGE, INCLUDING SIGN LANGUAGE, CAN ENHANCE COGNITIVE SKILLS AND IMPROVE MEMORY.

How to Sign "EAT" in American Sign Language (ASL)

THE SIGN FOR "EAT" IN ASL IS STRAIGHTFORWARD AND EASY TO LEARN. HERE'S A STEP-BY-STEP GUIDE TO EXECUTING THE SIGN CORRECTLY:

STEP-BY-STEP INSTRUCTIONS

1. **START WITH YOUR DOMINANT HAND:** USE YOUR DOMINANT HAND (THE ONE YOU WRITE WITH) TO FORM THE SIGN.
2. **FORM THE HANDSHAPE:** CREATE A FLAT HANDSHAPE BY EXTENDING YOUR FINGERS WHILE KEEPING THEM TOGETHER. YOUR PALM SHOULD FACE UPWARDS.
3. **BRING YOUR HAND TO YOUR MOUTH:** MOVE YOUR HAND TOWARDS YOUR MOUTH, MIMICKING THE MOTION OF BRINGING FOOD TO YOUR MOUTH.
4. **REPEAT FOR EMPHASIS:** FOR EMPHASIS OR REPETITION, YOU CAN PERFORM THE SIGN MULTIPLE TIMES, BRINGING YOUR HAND TO YOUR MOUTH EACH TIME.

FACIAL EXPRESSIONS MATTER

IN SIGN LANGUAGE, FACIAL EXPRESSIONS PLAY A CRUCIAL ROLE IN CONVEYING MEANING. WHEN SIGNING "EAT," IT'S HELPFUL TO USE A NEUTRAL OR HAPPY EXPRESSION, DEPENDING ON THE CONTEXT. THIS ADDS EMOTIONAL DEPTH TO YOUR COMMUNICATION AND HELPS CONVEY YOUR FEELINGS ABOUT THE ACTION.

VARIATIONS OF THE SIGN FOR "EAT"

WHILE THE BASIC SIGN FOR "EAT" REMAINS CONSISTENT IN ASL, THERE ARE VARIATIONS USED FOR DIFFERENT CONTEXTS. HERE ARE A FEW EXAMPLES:

- **DRINK:** TO SIGN "DRINK," USE THE SAME HANDSHAPE BUT BRING YOUR HAND TO YOUR MOUTH AS IF HOLDING A CUP.
- **FOOD:** TO SIGN "FOOD," YOU CAN USE BOTH HANDS TO MIMIC THE ACT OF EATING OR PLACE YOUR DOMINANT HAND ON YOUR NON-DOMINANT HAND, REPRESENTING A PLATE.
- **HUNGRY:** TO INDICATE THAT YOU ARE HUNGRY, PLACE YOUR DOMINANT HAND ON YOUR STOMACH AND MOVE IT IN A CIRCULAR MOTION.

THE IMPORTANCE OF CONTEXT IN SIGN LANGUAGE

UNDERSTANDING THE CONTEXT IN WHICH A SIGN IS USED IS VITAL FOR EFFECTIVE COMMUNICATION. HERE ARE A FEW FACTORS THAT INFLUENCE THE MEANING OF THE SIGN FOR "EAT":

1. CULTURAL CONTEXT

DIFFERENT CULTURES HAVE UNIQUE FOOD CUSTOMS, AND THE WAY FOOD IS PREPARED AND CONSUMED CAN IMPACT THE WAY SIGNS ARE USED. FOR EXAMPLE, IN SOME CULTURES, SHARING FOOD MAY BE A SIGN OF HOSPITALITY, WHILE IN OTHERS, IT MAY REPRESENT A FAMILY BOND.

2. SITUATIONAL CONTEXT

THE CONTEXT OF THE CONVERSATION PLAYS AN ESSENTIAL ROLE IN INTERPRETING SIGNS. FOR INSTANCE, IF SOMEONE ASKS, "WHAT DO YOU WANT TO EAT?" THE RESPONSE MAY BE ACCOMPANIED BY THE SIGN "EAT" ALONG WITH THE SPECIFIC SIGN FOR THE FOOD ITEM DESIRED.

3. EMOTIONAL CONTEXT

THE EMOTIONAL TONE OF A CONVERSATION CAN ALSO CHANGE THE MEANING OF A SIGN. IF SOMEONE IS EXCITED ABOUT FOOD, THEIR FACIAL EXPRESSIONS AND BODY LANGUAGE WILL REFLECT THAT ENTHUSIASM WHILE SIGNING "EAT." IN CONTRAST, IF SOMEONE IS DISINTERESTED OR DISAPPOINTED, THEIR EXPRESSION MAY BE FLAT OR NEGATIVE.

COMMON MISUNDERSTANDINGS ABOUT SIGN LANGUAGE

THERE ARE SEVERAL MISCONCEPTIONS SURROUNDING SIGN LANGUAGE THAT CAN HINDER EFFECTIVE COMMUNICATION. HERE ARE SOME COMMON MISUNDERSTANDINGS:

- **SIGN LANGUAGE IS UNIVERSAL:** MANY PEOPLE BELIEVE THAT THERE IS ONE UNIVERSAL SIGN LANGUAGE, BUT IN REALITY, EACH COUNTRY HAS ITS OWN VERSION.
- **SIGN LANGUAGE IS JUST PANTOMIME:** SOME PEOPLE THINK THAT SIGN LANGUAGE IS MERELY GESTURING. HOWEVER, IT HAS ITS OWN GRAMMATICAL RULES AND STRUCTURE.
- **ALL DEAF PEOPLE USE SIGN LANGUAGE:** NOT ALL DEAF INDIVIDUALS USE SIGN LANGUAGE. SOME MAY RELY ON LIP READING, WRITTEN COMMUNICATION, OR ORAL SPEECH.

RESOURCES FOR LEARNING SIGN LANGUAGE

IF YOU'RE INTERESTED IN LEARNING MORE ABOUT SIGN LANGUAGE, THERE ARE NUMEROUS RESOURCES AVAILABLE:

- **ONLINE COURSES:** WEBSITES LIKE ASL UNIVERSITY AND SIGN LANGUAGE 101 OFFER STRUCTURED COURSES FOR BEGINNERS.
- **YOUTUBE CHANNELS:** MANY CHANNELS PROVIDE FREE VIDEO TUTORIALS ON SIGN LANGUAGE, INCLUDING THE BASICS AND SPECIFIC SIGNS.
- **BOOKS:** THERE ARE VARIOUS BOOKS THAT TEACH SIGN LANGUAGE, OFTEN ACCOMPANIED BY ILLUSTRATIONS AND EXPLANATIONS.
- **COMMUNITY CLASSES:** LOCAL COMMUNITY COLLEGES OR ORGANIZATIONS MAY OFFER SIGN LANGUAGE CLASSES.

FINAL THOUGHTS

THE SIGN FOR "EAT" IS JUST ONE EXAMPLE OF HOW SIGN LANGUAGE CAN FACILITATE COMMUNICATION AND UNDERSTANDING AMONG DIVERSE COMMUNITIES. BY LEARNING SIGN LANGUAGE, YOU NOT ONLY GAIN THE ABILITY TO COMMUNICATE WITH DEAF INDIVIDUALS BUT ALSO ENRICH YOUR UNDERSTANDING OF LANGUAGE AND CULTURE. WHETHER YOU'RE A BEGINNER OR LOOKING TO ENHANCE YOUR SKILLS, THERE ARE ABUNDANT RESOURCES AVAILABLE TO HELP YOU ON YOUR JOURNEY. EMBRACE THE BEAUTY OF SIGN LANGUAGE AND THE CONNECTIONS IT FOSTERS IN OUR WORLD!

FREQUENTLY ASKED QUESTIONS

WHAT IS THE SIGN FOR 'EAT' IN AMERICAN SIGN LANGUAGE (ASL)?

IN ASL, THE SIGN FOR 'EAT' IS MADE BY BRINGING YOUR DOMINANT HAND, IN A FLAT 'O' SHAPE, TO YOUR MOUTH.

HOW DO YOU SIGN 'EAT' IN BRITISH SIGN LANGUAGE (BSL)?

IN BSL, THE SIGN FOR 'EAT' INVOLVES BRINGING YOUR FINGERTIPS TO YOUR MOUTH, SIMILAR TO THE ACTION OF EATING.

ARE THERE DIFFERENT SIGNS FOR 'EAT' IN VARIOUS SIGN LANGUAGES?

YES, DIFFERENT SIGN LANGUAGES HAVE THEIR OWN UNIQUE SIGNS FOR 'EAT', REFLECTING CULTURAL VARIATIONS.

CAN I USE BODY LANGUAGE TO EMPHASIZE THE SIGN FOR 'EAT'?

ABSOLUTELY! BODY LANGUAGE AND FACIAL EXPRESSIONS CAN ENHANCE THE MEANING OF THE SIGN FOR 'EAT' IN SIGN LANGUAGE.

IS THERE A SPECIFIC CONTEXT IN WHICH THE SIGN FOR 'EAT' CAN VARY?

YES, THE SIGN CAN VARY BASED ON CONTEXT, SUCH AS IF YOU'RE REFERRING TO EATING FOOD, A MEAL, OR SNACKING.

HOW IMPORTANT IS FACIAL EXPRESSION WHEN SIGNING 'EAT'?

FACIAL EXPRESSIONS ARE CRUCIAL IN SIGN LANGUAGE AS THEY CONVEY EMOTIONS AND CONTEXT, MAKING YOUR SIGN FOR 'EAT' CLEARER.

CAN CHILDREN LEARN THE SIGN FOR 'EAT' EASILY?

YES, CHILDREN OFTEN PICK UP SIGNS QUICKLY, AND 'EAT' IS A COMMON SIGN THEY LEARN EARLY ON.

WHERE CAN I FIND RESOURCES TO LEARN THE SIGN FOR 'EAT'?

MANY ONLINE PLATFORMS, INCLUDING YOUTUBE AND SIGN LANGUAGE LEARNING WEBSITES, OFFER TUTORIALS FOR LEARNING THE SIGN FOR 'EAT'.

Find other PDF article:

<https://soc.up.edu.ph/25-style/files?trackid=sYg46-1631&title=giving-up-the-ghost-a-memoir-hilary-mantel.pdf>

Sign in to Gmail Tip: If you're signing in to a public computer, make sure that you sign out before leaving the computer. Find out more about securely signing in.

Se connecter à Gmail Conseil : Si vous vous connectez à un ordinateur public, pensez à vous déconnecter avant de quitter l'ordinateur. Découvrez comment vous connecter sur un appareil ...

Important: Before you set up a new Gmail account, make sure to sign out of your current Gmail account. [Learn how to sign out of Gmail.](#) From your device, go to the [Google Account sign in](#) ...

You may login via this link to check your inbox: mail.google.com

Signing in to YouTube allows you to access features like subscriptions, playlists and purchases, and history.

2) The other way is to sign out of all Google Accounts and sign into the one you wish to keep and click on the avatar at the top right on almost any Google product page (like www.google.com) ...

Jun 5, 2025 · patreon.com/Patreon.com/Patreon.com/Patreon.com ...

When you do, you can follow these steps to avoid getting locked out of your Google Account. Avoid account & password recovery services For your security, you can't call Google for help ...

Gemini Apps give you direct access to Google AI. You can get help with writing, planning, learning and more. Learn more about what Gemini is and how it works,

Discover what sign language for eat looks like and how to use it effectively. Enhance your communication skills today! Learn more in our detailed guide.

[Back to Home](#)