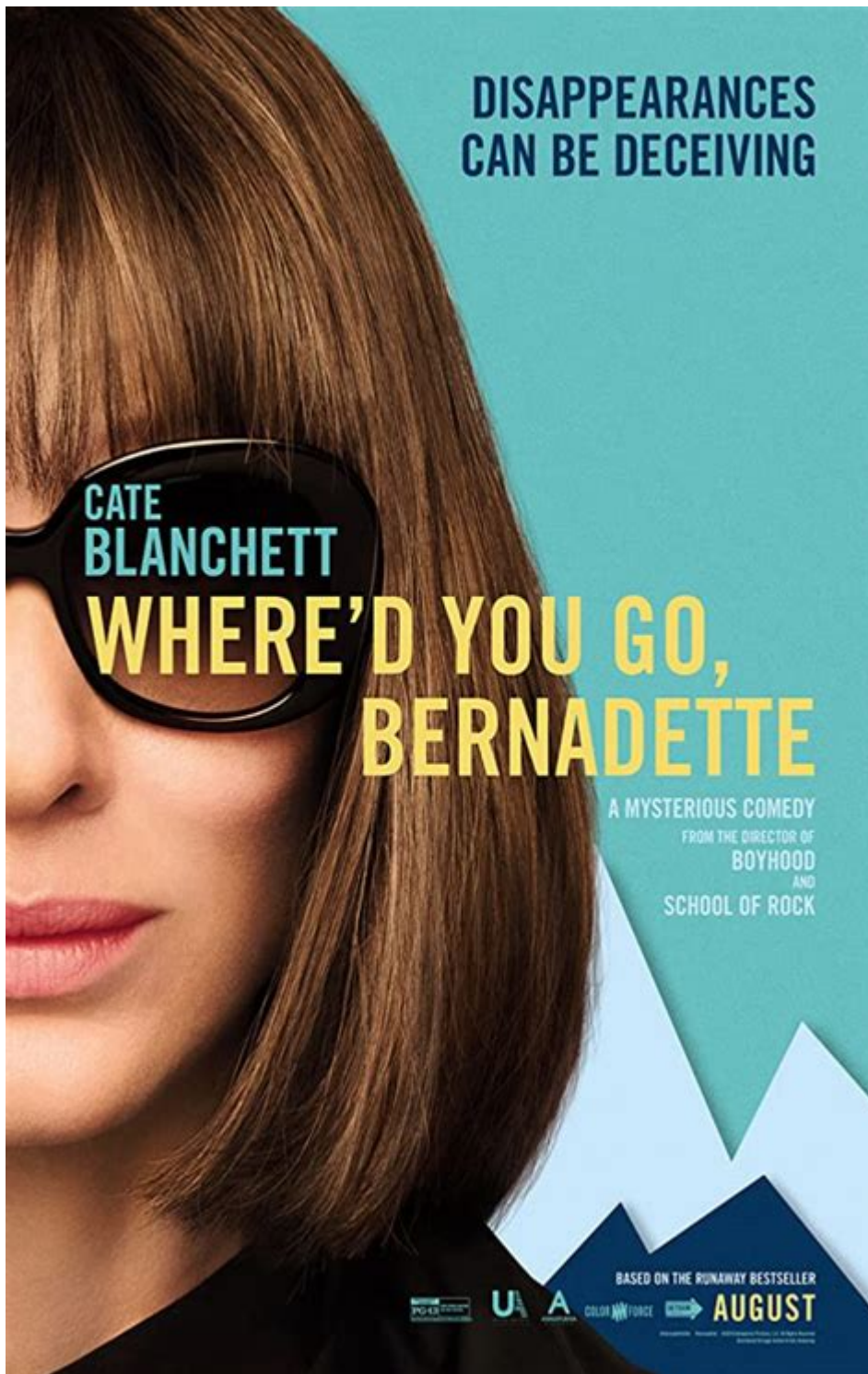


Where D You Go Bernadette



Where'd You Go, Bernadette is a captivating novel written by Maria Semple that intricately weaves themes of family, identity, and the complexities of modern life. This engaging narrative is not only a humorous exploration of a woman's descent into the chaos of her own mind but also a profound commentary on societal expectations and personal fulfillment. The story revolves around Bernadette Fox, an eccentric architect who mysteriously disappears, prompting her daughter, Bee, to embark on a quest to uncover the truth about her mother's whereabouts. Through a unique narrative structure that incorporates emails, letters, and official documents, Semple crafts a compelling tale that

resonates with readers of all ages.

Plot Overview

Where'd You Go, Bernadette is set against the backdrop of Seattle, Washington, and follows the life of Bernadette Fox, a once-prominent architect who has retreated from the world. The story is narrated primarily through the perspective of her daughter, Bee, who is a bright and determined teenager.

Introduction to Characters

1. Bernadette Fox: The protagonist, an architect who has become increasingly reclusive and disillusioned with her life.
2. Bee Branch: Bernadette's gifted daughter who idolizes her mother and is determined to find her when she goes missing.
3. Elgin Branch: Bernadette's husband, a successful Microsoft executive who struggles to understand his wife's mental state.
4. Audrey: Bernadette's neighbor, who embodies the conventional expectations of suburban life and often clashes with Bernadette's free-spirited nature.

Setting the Scene

The novel opens with a glimpse into Bernadette's life in a crumbling mansion in Seattle. The setting plays a crucial role in reflecting Bernadette's internal struggles:

- Seattle's Tech Culture: The influence of the tech industry is prominent, particularly through Elgin's job at Microsoft. This underscores the pressure to conform to modern societal norms.
- The Suburban Landscape: The portrayal of suburban life highlights the contrast between Bernadette's unique personality and the expectations of her neighbors, particularly Audrey.

Thematic Exploration

Where'd You Go, Bernadette tackles various themes that resonate with readers, making it a rich text for analysis.

Isolation and Mental Health

Bernadette's descent into reclusiveness is a reflection of her mental health struggles. The novel addresses:

- Social Anxiety: Bernadette's fear of social interactions manifests in her avoidance of community events and her disdain for her neighbors.

- Creative Block: The pressure to create in a society that values productivity takes a toll on Bernadette's mental well-being, showcasing the struggles faced by many creative individuals.

Mother-Daughter Relationships

The dynamic between Bernadette and Bee is central to the narrative, highlighting:

- Unconditional Love: Bee's determination to find her mother illustrates the deep bond they share, despite Bernadette's flaws.
- Generational Differences: The novel also explores the contrasting views of motherhood and expectations across different generations.

Identity and Self-Discovery

As Bernadette grapples with her identity, the theme of self-discovery is prevalent:

- Personal Fulfillment: Bernadette's journey reflects the struggle to balance personal desires with societal expectations.
- Reinvention: The novel showcases the idea that it's never too late to reinvent oneself, as Bernadette ultimately seeks to reclaim her identity.

Structure and Style

One of the most remarkable aspects of *Where'd You Go, Bernadette* is its unique narrative structure, which employs various formats to tell the story.

Epistolary Format

The use of emails, letters, and official documents provides a multifaceted view of the characters and their relationships:

- Diverse Perspectives: This format allows readers to see different viewpoints, particularly through Bee's eyes and the perceptions of others, such as her father and neighbors.
- Humor and Wit: Semple's sharp humor shines through in the written exchanges, adding depth to the characters and their situations.

Character Development

Through the epistolary format, readers witness significant character development:

- Bernadette's Backstory: As Bee uncovers her mother's past through various documents, readers

gain insight into Bernadette's life, her career, and the events that led to her current state.

- Bee's Growth: Bee evolves from a naive girl into a determined young woman, showcasing her resilience and loyalty.

Critical Reception

Where'd You Go, Bernadette received widespread acclaim upon its release. Critics praised Semple's ability to blend humor with poignant social commentary. Key aspects of its reception include:

- Best Seller Lists: The novel quickly became a bestseller, appealing to a diverse audience.
- Adaptation: Its popularity led to a film adaptation in 2019, directed by Richard Linklater and starring Cate Blanchett as Bernadette. While the film garnered mixed reviews, it introduced the story to a broader audience.

Impact on Readers

The novel resonates with many readers who see reflections of their own lives in Bernadette's struggles:

- Relatability: The themes of isolation, mental health, and the quest for identity strike a chord with those navigating similar challenges.
- Inspiration: Bernadette's journey inspires readers to embrace their individuality and pursue personal fulfillment, even in the face of societal pressure.

Conclusion

Where'd You Go, Bernadette is more than just a story about a missing person; it is a profound exploration of the complexities of modern life, the struggles of motherhood, and the quest for self-discovery. Maria Semple masterfully crafts a narrative that combines humor with serious themes, making it a compelling read for audiences of all backgrounds. The novel not only entertains but also encourages reflection on the importance of embracing individuality and the complex nature of human relationships. By blending various narrative styles and perspectives, Semple creates a rich tapestry that invites readers to ponder their own identities and the societal expectations that shape them. As readers accompany Bee on her journey to find her mother, they are also prompted to consider the broader implications of Bernadette's disappearance and what it means to truly be oneself in a world that often demands conformity.

Frequently Asked Questions

What is the main premise of 'Where'd You Go, Bernadette'?

'Where'd You Go, Bernadette' follows the story of Bernadette Fox, an eccentric architect who

mysteriously disappears before a family trip to Antarctica, prompting her daughter, Bee, to uncover the truth behind her disappearance.

Who is the author of 'Where'd You Go, Bernadette'?

The novel 'Where'd You Go, Bernadette' is written by Maria Semple.

What themes are explored in 'Where'd You Go, Bernadette'?

The book explores themes of motherhood, mental health, identity, and the pressures of modern life, as well as the complexities of family dynamics.

Is 'Where'd You Go, Bernadette' available as a movie?

Yes, 'Where'd You Go, Bernadette' was adapted into a film released in 2019, directed by Richard Linklater and starring Cate Blanchett as Bernadette.

What makes Bernadette Fox a unique character in literature?

Bernadette Fox is portrayed as a brilliant but reclusive architect, whose quirky personality and struggles with societal expectations set her apart as a relatable yet complex character.

How does the narrative structure of 'Where'd You Go, Bernadette' enhance the story?

The narrative is presented through a mix of emails, documents, and Bee's perspective, which creates a dynamic storytelling style that engages readers and gradually reveals Bernadette's character and circumstances.

Find other PDF article:

<https://soc.up.edu.ph/40-trend/Book?ID=Ave01-4401&title=mcdougal-littell-modern-world-history-patterns-of-interaction-answer-key.pdf>

Where D You Go Bernadette

~~~~~;) ;D XD : (~~~~~?\_~~~~~

~~~~~"~~~~~" :);D XD~~~~~: (~~~~~90°~~~~~90°~~~~~  
~~~~~ ...

~~~~~\_~~~~~ - ~~~~~

~~~~~ 2025-02-19 · ~~~~~

*bigbang*~~~~~ ..

Aug 15, 2014 · bigbang~~~~~ BigBang ~~~~~ Ye the finally I realize that I'm nothing without you I was so wrong forgive ...

dpibp -

Oct 29, 2024 · dpibp DPIdpibpcpibp  
 ...

-

A B C D E F G H ...

www.baidu.com

Aug 11, 2024 · www.baidu.com  
 ...

Feb 28, 2025 · https://pan.baidu.com/ ...

biphttp://bip.countrygarden.com.cn/\_ ...

17 2022-06-07 · TA1.3

-

2024-12-20 ·

-

Dec 5, 2024 · ICP030173-1 20231034-029 ©2025Baidu | |

:) ;D XD :(\_

“” :);DXD: (90°90°  
 ...

\_ -

2025-02-19 ·

bigbang\_ ...

Aug 15, 2014 · bigbangBigBang Ye the finally I  
 realize that I'm nothing without you I was so ...

dpibp -

Oct 29, 2024 · dpibp DPIdpibpcpibp  
 ...

-

A B C D E F G H ...

www.baidu.com

Aug 11, 2024 · www.baidu.com  
 ...

Feb 28, 2025 · https://pan.baidu.com/ ...

biphttp://bip.countrygarden.com.cn/\_ ...

17 2022-06-07 · TA1.3

00000000 - 0000  
 0000 2024-12-20 · 000000000000

0000000000 - 0000  
 Dec 5, 2024 · ICP030173-1 000020231034-029 ©2025Baidu 00000000 | 0000 | 0000

Discover the intriguing journey of 'Where'd You Go

[Back to Home](#)