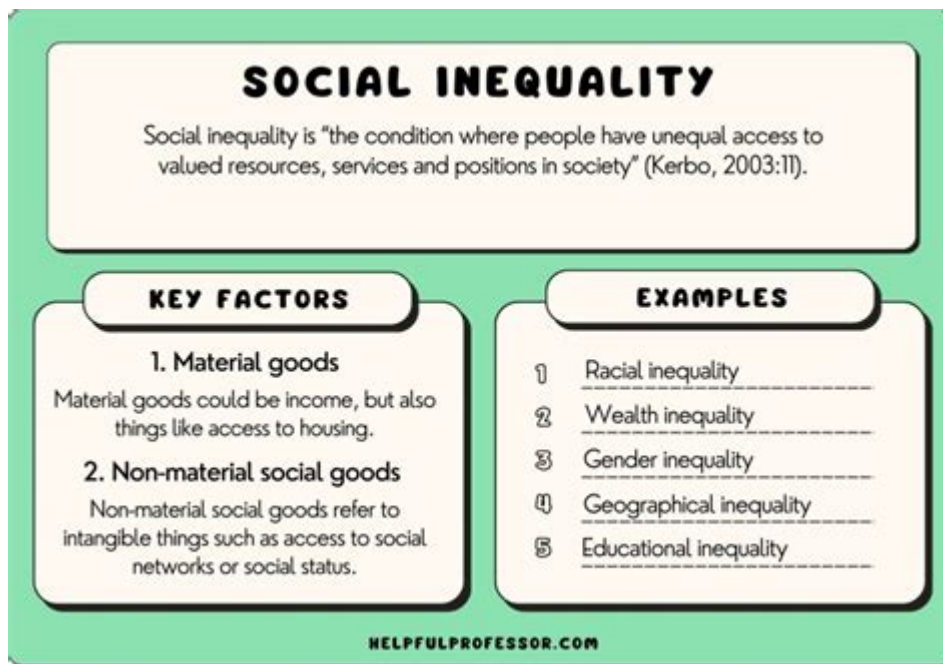


# What Is Social Inequality In Sociology



**What is social inequality in sociology?** Social inequality refers to the disparities in access to resources, opportunities, and privileges among individuals or groups within a society. These disparities can be based on various factors, including socioeconomic status, race, gender, education, and geographic location. Understanding social inequality is crucial for sociologists as it helps to reveal the underlying structures and systems that perpetuate these inequalities, influencing individuals' life chances and overall societal cohesion.

## The Dimensions of Social Inequality

Social inequality can be analyzed through multiple dimensions, each highlighting different aspects of how inequality manifests in society. The major dimensions include:

### 1. Economic Inequality

Economic inequality pertains to the unequal distribution of wealth and resources in society. It encompasses several aspects, including:

- **Income Inequality:** Differences in income levels among individuals or groups, often measured using the Gini coefficient or income quintiles.
- **Wealth Inequality:** The disparity in the distribution of assets and property, which can be more pronounced than income inequality.

- **Employment Opportunities:** Access to jobs and careers can vary significantly based on factors like education, skills, and social connections.

## 2. Social Class

Social class is a key concept in the study of social inequality. It categorizes people based on economic status, education, occupation, and lifestyle. The primary social classes include:

- **Upper Class:** Individuals with significant wealth and high social status.
- **Middle Class:** A broad category that includes professionals and skilled workers with moderate wealth.
- **Working Class:** Individuals employed in manual labor or low-wage jobs.
- **Underclass:** Those who experience persistent poverty and are often marginalized in society.

## 3. Racial and Ethnic Inequality

Racial and ethnic inequality highlights the disparities faced by different racial and ethnic groups. These inequalities can manifest in various ways, including:

- **Discrimination:** Systematic biases that affect hiring, promotions, and treatment in the workplace.
- **Educational Disparities:** Differences in educational attainment and quality of education based on race or ethnicity.
- **Health Inequities:** Variations in health outcomes and access to healthcare services.

## 4. Gender Inequality

Gender inequality refers to the unequal treatment and opportunities afforded to individuals based on their gender. Key aspects include:

- **Pay Gap:** The difference in earnings between men and women, often highlighted as a

significant issue in the workforce.

- **Occupational Segregation:** The division of labor where certain jobs are predominantly held by one gender.
- **Access to Leadership Roles:** Women are often underrepresented in managerial and executive positions.

## 5. Geographic Inequality

Geographic inequality focuses on the disparities between different regions or locations. Factors contributing to geographic inequality include:

- **Urban vs. Rural Divide:** Differences in access to services, employment opportunities, and infrastructure.
- **Regional Disparities:** Variations in economic development and quality of life across different regions.

## Causes of Social Inequality

Understanding the root causes of social inequality is essential for addressing the issue effectively. Some of the primary causes include:

### 1. Historical Context

Many inequalities have deep historical roots, often tied to colonization, slavery, and systemic discrimination. These historical contexts contribute to ongoing disparities in wealth, education, and opportunities.

### 2. Institutional Factors

Institutions play a significant role in perpetuating social inequality. This includes:

- **Education Systems:** Inequitable access to quality education can create long-lasting disadvantages.
- **Legal Systems:** Discriminatory laws and practices can reinforce inequalities.

- **Economic Policies:** Policies that favor certain groups over others can exacerbate disparities.

### 3. Cultural Factors

Cultural norms and values can also contribute to social inequality. Stereotypes, biases, and societal expectations can limit opportunities for marginalized groups.

## Consequences of Social Inequality

Social inequality has far-reaching consequences, affecting not only individuals but society as a whole. Some of the major consequences include:

### 1. Reduced Social Mobility

Individuals in lower socioeconomic classes often struggle to improve their circumstances due to systemic barriers. This creates a cycle of poverty that can persist across generations.

### 2. Health Disparities

Social inequality often correlates with health disparities. Individuals from marginalized groups may have less access to healthcare services, leading to poorer health outcomes.

### 3. Social Unrest

High levels of inequality can lead to social unrest and conflict. When large segments of the population feel disenfranchised, it can result in protests, crime, and other forms of social discord.

### 4. Economic Inefficiency

Inequality can hinder economic growth by limiting the potential of large segments of the population. When individuals lack access to education and job opportunities, their skills and talents remain underutilized.

# Addressing Social Inequality

Efforts to address social inequality require a multifaceted approach. Some strategies include:

## 1. Policy Reforms

Implementing policies that promote equity in education, employment, and healthcare is essential. This may involve affirmative action programs, living wage laws, and enhanced access to education.

## 2. Community Engagement

Grassroots movements and community organizations play a vital role in advocating for social change. Engaging communities in decision-making processes can empower marginalized groups.

## 3. Education and Awareness

Raising awareness about social inequality and its consequences can inspire individuals and organizations to take action. Education can help challenge stereotypes and promote inclusivity.

## 4. Research and Data Collection

Ongoing research and data collection are crucial for understanding the dynamics of social inequality. By analyzing trends and outcomes, policymakers can develop targeted strategies to address disparities.

## Conclusion

In conclusion, **what is social inequality in sociology** encompasses a complex web of factors that influence individuals' access to resources and opportunities. By examining the dimensions, causes, and consequences of social inequality, we can better understand its impact on society and work towards creating a more equitable world. Addressing these inequalities is not just a moral imperative but also essential for fostering social cohesion and economic prosperity.

# **Frequently Asked Questions**

## **What is social inequality in sociology?**

Social inequality in sociology refers to the unequal distribution of resources, opportunities, and privileges within a society, which can manifest in various forms such as economic disparity, access to education, healthcare, and social mobility.

## **What are the main causes of social inequality?**

The main causes of social inequality include economic factors, social stratification, systemic discrimination, historical injustices, and differences in access to education and employment opportunities.

## **How does social inequality affect education?**

Social inequality affects education by creating disparities in access to quality schools, resources, and support systems, often leading to lower educational attainment for marginalized groups.

## **What role does class play in social inequality?**

Class plays a significant role in social inequality as it influences individuals' access to resources, opportunities, and social networks, often resulting in entrenched cycles of poverty or privilege.

## **Can social inequality be measured?**

Yes, social inequality can be measured using various indices and metrics, such as the Gini coefficient, income distribution ratios, and access to education and healthcare statistics.

## **What is the impact of social inequality on health?**

Social inequality has a profound impact on health, as those in lower socioeconomic positions often experience higher rates of chronic diseases, limited access to healthcare, and overall poorer health outcomes.

## **How does race intersect with social inequality?**

Race intersects with social inequality by contributing to systemic discrimination and disparities in income, education, and access to resources, often exacerbating the inequalities faced by racial and ethnic minorities.

## **What are some solutions to reduce social inequality?**

Solutions to reduce social inequality include implementing progressive taxation, improving access to quality education and healthcare, promoting inclusive economic policies, and supporting social welfare programs.

# What is the relationship between social inequality and crime?

The relationship between social inequality and crime is complex; higher levels of inequality can lead to increased crime rates due to factors such as poverty, lack of opportunity, and social disintegration.

## How does globalization affect social inequality?

Globalization can affect social inequality by creating economic opportunities and growth in some regions while simultaneously exacerbating inequalities and marginalization in others, often leading to a widening gap between the rich and poor.

Find other PDF article:

<https://soc.up.edu.ph/49-flash/files?dataid=cnU07-3501&title=psychology-101-exam-2.pdf>

## What Is Social Inequality In Sociology

### **SOCIAL | Restaurant + Lounge | Ottawa**

SOCIAL is focused on progressive Canadian cuisine with a diverse & innovative wine selection and craft cocktail offerings. SOCIAL is one of Ottawa's most vibrant & creative restaurants with breathtaking ambiance.

### **MENUS | SOCIAL | Restaurant**

Please note that we require a credit card for all bookings over 8+ guests. There is also a 20% gratuity added to all bookings in private rooms.

### **BRUNCHED+BEAUTIFUL | SOCIAL | Restaurant**

WELCOME TO SOCIAL'S NEW MONTHLY DRAG SHOW, BROUGHT TO YOU BY OTTAWA'S VERY OWN UNITY PRODUCTIONS HOSTED BY FIFI HOO-KERS

### **HAPPENING | SOCIAL | Restaurant**

SOCIAL HOUR UNWIND WITH US DAILY FROM 3PM-6PM (AND LATE NIGHT THURS-SAT) FOR GREAT DRINKS, SHAREABLE BITES, AND GOOD VIBES.

### **CONTACT | SOCIAL | Restaurant**

CONTACT US OUR DEDICATED TEAM IS ALWAYS AVAILABLE TO ASSIST YOU WITH ANY QUESTIONS OR CONCERNS YOU MAY HAVE, AND WE STRIVE TO PROVIDE PROMPT AND EFFICIENT CUSTOMER SERVICE TO ENSURE THAT YOUR DINING EXPERIENCES WITH US ARE NOTHING SHORT OF EXCEPTIONAL. \*

### *GROUP MENUS | SOCIAL | Restaurant*

Please note that we require a credit card for all bookings over 8+ guests. There is also a 20% gratuity added to all bookings in private rooms.

#### VALENTINE'S DAY | SOCIAL | Restaurant

SOCIAL VALENTINE'S DAY MENU Set Menu \$125 / per person First Course select one of the following TWILD BOAR BELLY FRITTER PICKLED MUSTARD SEED | RASPBERRY GASTRIQUE | CHARRED SHALLOT SOUBISE DRESSED OYSTER STRAWBERRY THAI HOT SAUCE | SHERRY MIGNONETTE | HORSERADDISH Second Course select one of the ...

#### End of Summer Patio Social! | SOCIAL | Restaurant

Sep 29, 2024 · Join us at Social on September 29th for the End of Summer Patio Social! Enjoy live music by Jeff Rogers from 6-9 PM, sip your favorite drinks, and soak up the last bit of summer vibes. Let's #GetSocial and make it a night to remember!

#### **PRIVATE EVENTS | SOCIAL | Restaurant**

PRIVATE EVENTS AT SOCIAL, WE PRIDE OURSELVES IN EXCEEDING YOUR EVERY NEED AND EXPECTATION. EVERY FUNCTION, SMALL OR LARGE, FORMAL OR CASUAL, HAS UNIQUE AND SPECIFIC REQUIREMENTS WE CAN CATER TO, WITH THE OPTION OF A ONE-ON-ONE CONSULTATION TO ENHANCE THE PROFESSIONAL ATTENTION THAT ...

#### MOTHER'S DAY | SOCIAL | Restaurant

TREAT YOUR MOM, THIS MOTHER'S DAY MOTHER'S DAY BRUNCH : 11AM - 3PM BASKET OF BREAD | SM 4 / LG 7 HERB INFUSED OLIVE OIL + WHIPPED SALTED BUTTER OYSTERS | 6 FOR 28 | 12 FOR 52 GF FRESH HORSERADISH + HOUSE HOT SAUCE + MIGNONETTE + CITRUS DAILY SOUP | 12 CHEF'S DAILY CREATION MADE WITH LOCALLY SOURCED ...

#### **SOCIAL | Restaurant + Lounge | Ottawa**

SOCIAL is focused on progressive Canadian cuisine with a diverse & innovative wine selection and craft cocktail offerings. SOCIAL is one of Ottawa's most vibrant & creative restaurants with ...

#### MENUS | SOCIAL | Restaurant

Please note that we require a credit card for all bookings over 8+ guests. There is also a 20% gratuity added to all bookings in private rooms.

#### BRUNCHED+BEAUTIFUL | SOCIAL | Restaurant

WELCOME TO SOCIAL'S NEW MONTHLY DRAG SHOW, BROUGHT TO YOU BY OTTAWA'S VERY OWN UNITY PRODUCTIONS HOSTED BY FIFI HOO-KERS

#### **HAPPENING | SOCIAL | Restaurant**

SOCIAL HOUR UNWIND WITH US DAILY FROM 3PM-6PM (AND LATE NIGHT THURS-SAT) FOR GREAT DRINKS, SHAREABLE BITES, AND GOOD VIBES.

#### **CONTACT | SOCIAL | Restaurant**

CONTACT US OUR DEDICATED TEAM IS ALWAYS AVAILABLE TO ASSIST YOU WITH ANY QUESTIONS OR CONCERNS YOU MAY HAVE, AND WE STRIVE TO PROVIDE PROMPT ...

#### **GROUP MENUS | SOCIAL | Restaurant**

Please note that we require a credit card for all bookings over 8+ guests. There is also a 20% gratuity added to all bookings in private rooms.

#### VALENTINE'S DAY | SOCIAL | Restaurant

SOCIAL VALENTINE'S DAY MENU Set Menu \$125 / per person First Course select one of the following TWILD BOAR BELLY FRITTER PICKLED MUSTARD SEED | RASPBERRY ...



*End of Summer Patio Social! | SOCIAL | Restaurant*

Sep 29, 2024 · Join us at Social on September 29th for the End of Summer Patio Social! Enjoy live music by Jeff Rogers from 6-9 PM, sip your favorite drinks, and soak up the last bit of ...

**PRIVATE EVENTS | SOCIAL | Restaurant**

PRIVATE EVENTS AT SOCIAL, WE PRIDE OURSELVES IN EXCEEDING YOUR EVERY NEED AND EXPECTATION. EVERY FUNCTION, SMALL OR LARGE, FORMAL OR CASUAL, HAS ...

*MOTHER'S DAY | SOCIAL | Restaurant*

TREAT YOUR MOM, THIS MOTHER'S DAY MOTHER'S DAY BRUNCH : 11AM - 3PM BASKET OF BREAD | SM 4 / LG 7 HERB INFUSED OLIVE OIL + WHIPPED SALTED BUTTER ...

Discover what social inequality in sociology means

[Back to Home](#)