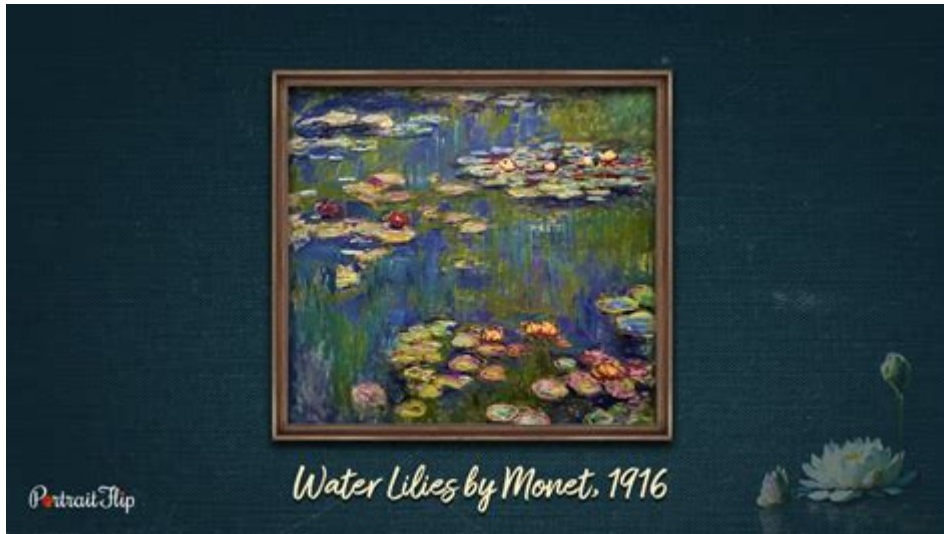


Water Lilies By Claude Monet Analysis



Water Lilies by Claude Monet is one of the most celebrated series of paintings in the history of art, representing the pinnacle of Impressionist expression. Monet, a pivotal figure in the Impressionist movement, created nearly 250 paintings of water lilies at his garden in Giverny, France, capturing the beauty and tranquility of nature while exploring light, color, and reflection. This article aims to provide a comprehensive analysis of Monet's water lilies, examining the historical context, artistic techniques, themes, and significance of this remarkable body of work.

Historical Context

Claude Monet (1840-1926) was a leading figure of the Impressionist movement, which emerged in France in the late 19th century. This art movement sought to break away from traditional forms and instead focused on capturing the fleeting effects of light and atmosphere. The Impressionists often painted en plein air (outdoors), emphasizing spontaneity and the changing qualities of nature.

Monet's interest in water lilies began in the late 1890s when he transformed his garden at Giverny into a picturesque landscape that included a pond filled with water lilies. Inspired by the beauty of his surroundings, Monet painted these scenes extensively, creating a series of works that would come to define his artistic legacy.

The Giverny Garden

Monet's garden in Giverny was not only a source of inspiration but also a carefully curated environment that reflected his artistic vision. He designed his garden to include a Japanese bridge, weeping willows, and a variety of flowers. The pond became the focal point of his landscape, offering a perfect setting for his explorations of light and color.

The tranquil setting allowed Monet to experiment with different techniques, leading to the creation of vibrant compositions filled with movement and emotion. This connection between the artist and his garden is essential to understanding the water lilies series, as it reveals Monet's deep appreciation and intimate relationship with nature.

Artistic Techniques

Monet employed several innovative techniques in his water lilies paintings that distinguished his work from traditional landscape painting.

1. Brushwork

Monet's brushwork in the water lilies series is characterized by loose, expressive strokes that convey movement and spontaneity. Rather than meticulously blending colors, he applied paint in quick, direct strokes, allowing the canvas to capture the immediacy of the moment. This technique creates a sense of dynamism and life within the paintings.

2. Color Palette

Monet's use of color in the water lilies series is particularly noteworthy. He employed a vibrant palette filled with blues, greens, pinks, and whites. The colors are often applied in layers, creating a sense of depth and luminosity. Monet's innovative approach to color also reflects his interest in the effects of light, as he frequently altered his palette to capture the changing conditions of his garden during different times of day and seasons.

3. Reflection and Abstraction

A significant aspect of Monet's water lilies is the way he represented reflection on the water's surface. He often painted the lilies and surrounding flora reflected in the pond, creating a complex interplay between reality and illusion. This technique not only adds depth to the compositions but also allows for a more abstract interpretation of the scene, as the lines between water and sky blur.

Thematic Exploration

Monet's water lilies series transcends mere representation of nature, delving into deeper themes of perception, time, and the human experience.

1. The Passage of Time

The water lilies can be seen as a reflection of the passage of time and the transient nature of beauty. Monet's repeated exploration of the same subject over different times of day and seasons emphasizes the idea that beauty is fleeting. Each painting captures a specific moment, encouraging viewers to appreciate the ephemeral qualities of life.

2. Nature as a Subject of Contemplation

Monet's water lilies invite contemplation and introspection. The serene compositions evoke a sense of tranquility, encouraging viewers to connect with nature on a deeper level. The absence of human figures in many of the paintings emphasizes a sense of solitude and quiet reflection, allowing the viewer to immerse themselves in the beauty of the natural world.

3. Abstraction and Modern Art

The water lilies series also marks a significant transition towards abstraction in art. While Monet's early works were more representational, the water lilies increasingly blurred the lines between reality and abstraction. This shift foreshadowed the emergence of modern art movements in the 20th century, as artists began to explore abstraction, color, and form in new ways.

Significance and Legacy

Monet's water lilies have had a profound impact on both the art world and popular culture. Their significance can be seen in several key areas:

1. Influence on Future Artists

Monet's innovative techniques and exploration of light and color influenced countless artists, paving the way for movements such as Fauvism and Abstract Expressionism. Artists like Henri Matisse and Jackson Pollock drew inspiration from Monet's approach to color and form, furthering the evolution of modern art.

2. Cultural Icon

The water lilies have transcended the realm of fine art to become cultural icons. They are often reproduced in various forms, from home decor to fashion, signifying their enduring appeal and relevance in contemporary society. Monet's work continues to resonate with

audiences, showcasing the timeless beauty of nature.

3. Environmental Awareness

In recent years, Monet's water lilies have taken on new significance in light of environmental issues. They serve as a reminder of the beauty of natural ecosystems and the importance of preserving them. Monet's intimate relationship with nature encourages viewers to reflect on their connection to the environment and the need for conservation.

Conclusion

Water Lilies by Claude Monet is more than just a series of paintings; it is a profound exploration of beauty, perception, and the passage of time. Through his innovative techniques, Monet captured the essence of his garden while inviting viewers into a world of tranquility and contemplation. The legacy of the water lilies continues to inspire and influence artists and art lovers alike, serving as a timeless reminder of the relationship between humanity and nature. As we reflect on Monet's work, we are reminded of the importance of cherishing the beauty that surrounds us and the fleeting moments that define our existence.

Frequently Asked Questions

What themes are prevalent in Claude Monet's 'Water Lilies' series?

Monet's 'Water Lilies' series explores themes of nature, light, and reflection. It captures the tranquility of the water garden and emphasizes the changing qualities of light throughout the day.

How did Monet's technique contribute to the impressionistic style in 'Water Lilies'?

Monet employed loose brushwork and a vibrant palette in 'Water Lilies', which are characteristic of Impressionism. This technique allowed him to convey movement and the ephemeral qualities of light and color.

What was the significance of the water lily pond in Monet's life and work?

The water lily pond at Monet's home in Giverny was a central subject of his work during his later years. It served as both a source of inspiration and a reflection of his inner emotional state, symbolizing peace and contemplation.

In what ways does 'Water Lilies' reflect the concept of 'plein air' painting?

Monet's 'Water Lilies' reflects 'plein air' painting through its direct observation of nature and the emphasis on capturing a moment in time. The series showcases the effects of natural light and weather conditions on the scene.

What artistic innovations did Monet introduce in the 'Water Lilies' series?

Monet introduced innovations such as the use of large canvases, a focus on abstraction, and the exploration of color theory. His work in the 'Water Lilies' series laid the groundwork for modern art movements, including Abstract Expressionism.

How did Monet's 'Water Lilies' series challenge traditional landscape painting?

Monet's 'Water Lilies' challenged traditional landscape painting by prioritizing subjective perception over detailed representation. His focus on color, light, and the emotional response to nature marked a shift towards abstraction.

What impact did the 'Water Lilies' series have on future generations of artists?

The 'Water Lilies' series had a profound impact on future generations by influencing movements such as Fauvism and Abstract Expressionism. Artists were inspired by Monet's approach to color and form, leading to new explorations in art.

How does the composition of 'Water Lilies' enhance the sense of serenity?

The composition of 'Water Lilies' often features a balanced arrangement of water, lilies, and reflections, creating a harmonious and peaceful scene. The lack of a clear horizon line immerses viewers in the tranquil water environment.

Find other PDF article:

<https://soc.up.edu.ph/04-ink/files?ID=WcC30-9937&title=adding-and-subtracting-fractions-answer-key.pdf>

Water Lilies By Claude Monet Analysis

Water - European Commission - Environment

Jul 8, 2025 · Clean water is the driving force of life. It is an essential resource for people and nature, and for regulating the climate. It is also crucial for the economy, agriculture and energy ...

Rand Water

Jul 9, 2025 · Important Notice Please take note that any contract and or agreement not signed by the Chief Executive of Rand Water will not be deemed as an official Rand Water ...

Towards a Water Resilience Strategy for the EU

Mar 6, 2025 · The European Commission will host a dedicated event to provide input on the upcoming European Water Resilience Strategy.

South African National Standard Drinking Water Quality ... - Rand ...

Minimum requirements for safe drinking water supply to consumers. Includes: – Water quality numerical limits (microbiological, chemical, radiological, operational & aesthetic parameters) – ...

New World Bank Program to Improve Water Supply and Quality ...

Jan 15, 2025 · The Second Greater Beirut Water Supply Project (SGBWSP) will complete critical water infrastructure, improve water quality, reduce reliance on costly private water sources, ...

GAUTENG WATER IMBIZO

Free State Gauteng Province Municipalities take an average of 89 days to pay for water supply invoices and this is due to under-performing and non-performing municipalities failing to ...

Togo: A New Operation to Boost Access to Water in Greater Lomé

Mar 29, 2023 · The World Bank has approved a new operation to make safe drinking water available to as many households as possible and improve sanitation services in Greater Lomé. ...

Water : Development news, research, data | World Bank

Dec 10, 2024 · Latest news and information from the World Bank and its development work on Water. Access facts, statistics, project information, development research from experts, and ...

City of Johannesburg - Rand Water

Feb 10, 2021 · Johannesburg Water treats over 1 billion litres of wastewater per day across 6 Wastewater Treatment Works The CoJ municipal sewer system consists of about 11, 780 km ...

Strengthening Water Resilience in Ethiopia's Rural Communities

May 22, 2025 · The Ethiopia HoA-GW4R Project is helping rural communities gain better access to safe groundwater, starting with the Adami Tesso and Kumato water supply system, which ...

Water - European Commission - Environment

Jul 8, 2025 · Clean water is the driving force of life. It is an essential resource for people and nature, and for regulating the climate. It is also crucial for the economy, agriculture and energy ...

Rand Water

Jul 9, 2025 · Important Notice Please take note that any contract and or agreement not signed by the Chief Executive of Rand Water will not be deemed as an official Rand Water ...

Towards a Water Resilience Strategy for the EU

Mar 6, 2025 · The European Commission will host a dedicated event to provide input on the upcoming European Water Resilience Strategy.

South African National Standard Drinking Water Quality ... - Rand ...

Minimum requirements for safe drinking water supply to consumers. Includes: – Water quality numerical limits (microbiological, chemical, radiological, operational & aesthetic parameters) – ...

New World Bank Program to Improve Water Supply and Quality ...

Jan 15, 2025 · The Second Greater Beirut Water Supply Project (SGBWSP) will complete critical water infrastructure, improve water quality, reduce reliance on costly private water sources, ...

GAUTENG WATER IMBIZO

Free State Gauteng Province Municipalities take an average of 89 days to pay for water supply invoices and this is due to under-performing and non-performing municipalities failing to ...

Togo: A New Operation to Boost Access to Water in Greater Lomé

Mar 29, 2023 · The World Bank has approved a new operation to make safe drinking water available to as many households as possible and improve sanitation services in Greater Lomé. ...

Water : Development news, research, data | World Bank

Dec 10, 2024 · Latest news and information from the World Bank and its development work on Water. Access facts, statistics, project information, development research from experts, and ...

City of Johannesburg - Rand Water

Feb 10, 2021 · Johannesburg Water treats over 1 billion litres of wastewater per day across 6 Wastewater Treatment Works The CoJ municipal sewer system consists of about 11, 780 km ...

Strengthening Water Resilience in Ethiopia's Rural Communities

May 22, 2025 · The Ethiopia HoA-GW4R Project is helping rural communities gain better access to safe groundwater, starting with the Adami Tesso and Kumato water supply system, which ...

Explore our in-depth analysis of "Water Lilies" by Claude Monet

[Back to Home](#)