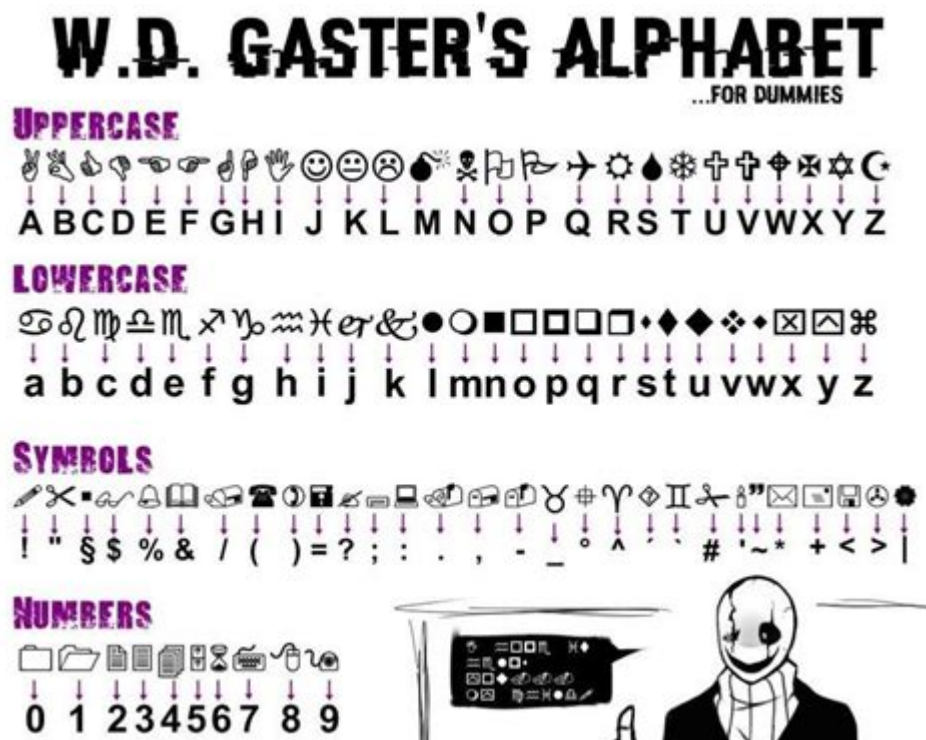


Wd Gaster Language



WD Gaster language is a fascinating and enigmatic aspect of the indie video game "Undertale," which was created by Toby Fox. Within this beloved game, WD Gaster is an elusive character whose language has captivated players and fans alike. This article delves into the origins, structure, and significance of WD Gaster's language, exploring its impact on the "Undertale" community and its role within the broader narrative of the game.

Origins of WD Gaster

WD Gaster is a character shrouded in mystery, only hinted at through various game mechanics and lore. He is often associated with the game's hidden content and Easter eggs, leading to much speculation among players. Gaster is thought to have been a former royal scientist, and his character is linked with the concept of "the void" and the manipulation of timelines.

The Role of WD Gaster in Undertale

In "Undertale," WD Gaster's presence is felt through several means:

1. The Ruins: Players can find remnants of Gaster's work in the Ruins area, including broken signs and strange messages.
2. Gaster's Followers: Certain characters in the game, like the "Gaster Blasters," are believed to be manifestations of Gaster's influence.
3. Hidden Rooms: The game contains hidden rooms and dialogue that provide insight into Gaster's character and his contributions to the game's universe.

The Language of WD Gaster

WD Gaster's language is a unique form of communication that has intrigued players. It is often referred to as "Gaster Language" and is characterized by its cryptic symbols and complex structure.

Characteristics of Gaster Language

The Gaster Language is not a traditional language but rather a series of glyphs and symbols that represent various concepts and emotions. Some notable features include:

- Symbolic Representation: Each symbol or glyph in Gaster's language corresponds to specific ideas or feelings. This allows for a form of communication that is both abstract and poetic.
- Ambiguity: The language is intentionally vague, leaving room for interpretation. This ambiguity adds to the mystery surrounding Gaster and encourages players to engage deeply with the game's lore.
- Interactivity: Players often engage with Gaster's language through puzzles and hidden messages, enhancing the gameplay experience.

Deciphering Gaster Language

Many players have attempted to decipher Gaster's language, resulting in a variety of interpretations. Some key methods include:

1. **Symbol Analysis:** Players analyze the symbols to determine their meanings, often referencing in-game lore and context.
2. **Community Collaboration:** The "Undertale" community has come together to share findings and theories, creating a collaborative environment for exploration and discovery.
3. **Fan Creations:** Many fans have created their own interpretations of Gaster's language, leading to an explosion of fan art, stories, and theories that expand on the character's lore.

Impact on the Undertale Community

The intrigue surrounding WD Gaster and his language has had a significant impact on the "Undertale" community, fostering creativity and collaboration among fans.

Fostering Creativity

The mysterious nature of Gaster's language has inspired various forms of creative expression:

- **Art:** Many artists have created illustrations depicting Gaster and the symbols associated with his language. These artworks often reflect personal interpretations of his character and lore.
- **Fan Fiction:** Writers have explored Gaster's backstory and connections to other characters, enriching the narrative of "Undertale" through fan-created stories.
- **Music:** Composers within the community have crafted original music inspired by Gaster, often capturing the essence of his enigmatic presence.

Theories and Speculations

Gaster's language has also led to numerous theories and speculations among fans, contributing to an ongoing dialogue about his character and significance. Some popular theories include:

1. **The Nature of Time:** Many believe Gaster's language reflects his connection to time and space within the game, suggesting he plays a more significant role in the overarching narrative.

2. Existential Themes: The ambiguity of Gaster's language has led some fans to explore themes of existence and identity, questioning the nature of reality within the "Undertale" universe.
3. Hidden Lore: Speculations abound regarding the hidden lore tied to Gaster, with players seeking to uncover more about his past and his relationship with other characters.

Conclusion

WD Gaster's language is a captivating element of "Undertale" that transcends conventional storytelling. Its unique structure and cryptic symbols invite players to engage deeply with the game's lore, fostering creativity and collaboration within the community. As fans continue to explore and interpret Gaster's language, they contribute to a rich tapestry of theories and artistic expression that keeps the spirit of "Undertale" alive.

As the game continues to resonate with audiences around the world, the allure of WD Gaster and his language remains a testament to the power of storytelling in video games. Whether through fan art, theories, or simply discussing Gaster's enigmatic role, players are united in their fascination with this mysterious character and the language that defines him. As new generations of players discover "Undertale," the legacy of WD Gaster and his language will undoubtedly endure, inspiring future explorations and interpretations for years to come.

Frequently Asked Questions

What is WD Gaster language?

WD Gaster language, often referred to as 'Gaster language,' is a fictional language associated with the character W.D. Gaster from the game 'Undertale.' It features a unique combination of symbols and characters that resemble the game's aesthetic.

How can I learn to read WD Gaster language?

To learn to read WD Gaster language, enthusiasts often refer to fan-created guides and translation resources available online. These resources break down the symbols and provide translations for common phrases.

What role does W.D. Gaster play in 'Undertale'?

W.D. Gaster is a mysterious character in 'Undertale' who is associated with the creation of the game's mechanics and lore. He has a cult following due to his enigmatic backstory and the hidden elements related to him in the game.

Are there any apps or tools for translating WD Gaster language?

Yes, there are several community-developed apps and online tools that can help translate WD Gaster language. These tools typically allow users to input symbols and receive translations or even generate new phrases.

Is WD Gaster language used in fan works or content?

Absolutely! WD Gaster language is frequently used in fan art, fan fiction, and various other fan-made content within the 'Undertale' community, where creators often incorporate the language to enhance their storytelling.

What is the significance of the symbols used in WD Gaster language?

The symbols used in WD Gaster language are designed to evoke a sense of mystery and otherworldliness, reflecting W.D. Gaster's enigmatic nature. Many fans believe the symbols hold deeper meanings related to the game's themes of choice and consequence.

Find other PDF article:

<https://soc.up.edu.ph/04-ink/Book?dataid=qhw46-8702&title=advanced-engineering-mathematics-8th-edition.pdf>

Wd Gaster Language

WD-40 2.5 ...

WD-40 “ ” _
WD-40 “ ”
...

wd discovery _
 wd discovery wd discovery WD
discovery ...

WD SES Device USB Device ...
 “WD SES Device USB Device ” USB
USB 3.0 ...

CT CE WE WC CC _
Sep 22, 2023 · CT CE WE WC CC
WC: CC ...

word -
Jan 12, 2018 · “ ”

(WD)Elements USB3.0 1T usb3.0
(WD)Elements USB3.0 1T usb3.0
...

www.baidu.com _
Aug 11, 2024 · www.baidu.com
...

Unlock the mysteries of WD Gaster language! Explore its unique symbols

[Back to Home](#)