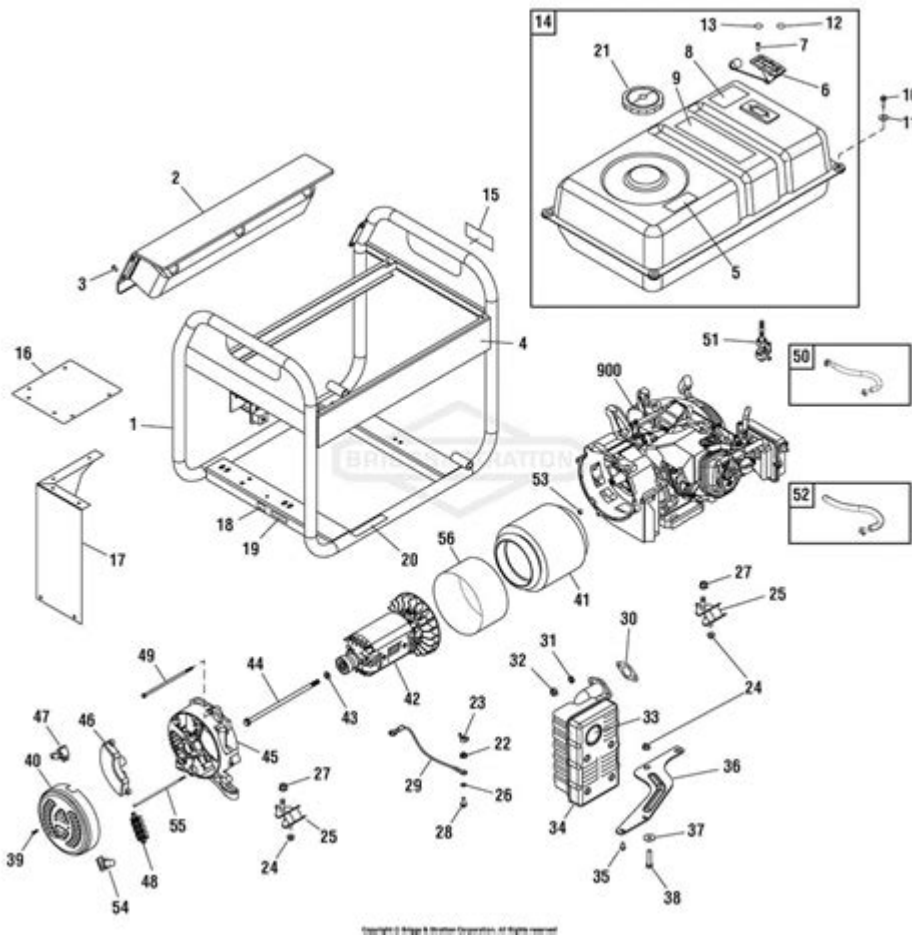


Vermeer Bc1500 Parts Diagram



Vermeer BC1500 parts diagram is an essential tool for anyone working with or maintaining the Vermeer BC1500 brush chipper. This powerful machine is widely used in landscaping, tree care, and forestry industries for efficiently chipping branches and brush into manageable pieces. Understanding the parts and their arrangement is crucial for proper maintenance, troubleshooting, and ensuring the machine operates effectively. In this article, we will delve into the details of the Vermeer BC1500 parts diagram, explain the significance of each component, and provide tips for maintenance and troubleshooting.

Overview of the Vermeer BC1500

The Vermeer BC1500 is a robust and versatile brush chipper designed to handle a range of materials. It features a high-capacity feed system, powerful engine, and sharp cutting blades that allow for efficient processing of large branches and brush. To maximize the performance and lifespan of this machine, it is vital to understand how its components work together.

Importance of the Parts Diagram

A parts diagram serves as a visual reference for identifying the various components of the machine. It offers several benefits, including:

- **Easy Identification:** Quickly locate and identify parts for replacement or inspection.
- **Troubleshooting:** Understand how parts interact to diagnose issues more effectively.
- **Maintenance:** Follow the diagram for regular maintenance tasks, ensuring all components are in optimal condition.
- **Ordering Parts:** Accurately order replacement parts by referencing the diagram.

Key Components of the Vermeer BC1500

To better understand the Vermeer BC1500 parts diagram, let's take a closer look at some of the key components that make up this brush chipper.

1. Engine

The engine is the heart of the BC1500, providing the necessary power to drive the chipper's operations. It typically features:

- A high-performance gas or diesel engine
- An air filtration system
- An oil reservoir for lubrication

2. Chipping Mechanism

The chipping mechanism is responsible for cutting the branches and brush into small pieces. Key parts include:

- Cutting Blades: Sharp and durable blades that slice through wood.
- Anvil: A stationary surface against which the blades cut.
- Feed Roller: Moves material into the chipping area.

3. Feed System

The feed system is crucial for efficiently moving material through the chipper. Components of the feed system include:

- Feed Rollers: Help pull branches into the machine.
- Feed Table: Guides material into the feed rollers.
- Control Mechanism: Allows the operator to control the feed speed.

4. Frame and Chassis

The frame supports the entire machine and includes the following:

- Chassis: The main structure that houses all components.
- Wheels: Provide mobility for transporting the chipper.
- Tow Hitch: Allows the chipper to be towed by a vehicle.

5. Electrical System

The electrical system powers various components and includes:

- Battery: Provides starting power for the engine.
- Wiring Harness: Connects different electrical components.
- Control Panel: Houses switches and indicators for operation.

Understanding the Parts Diagram

The parts diagram of the Vermeer BC1500 is typically divided into sections, with each section corresponding to a specific component of the machine. Here's how to navigate it effectively:

1. Section Identification

Each section of the diagram will be labeled with numbers or letters. Familiarize yourself with these labels to quickly find the components you need.

2. Part Numbers

Next to each part, you will often find a part number. This number is essential for ordering replacements. Make sure to note it down if you're planning to purchase new parts.

3. Assembly Instructions

Some diagrams may also include assembly instructions or notes on how to replace or repair specific components. Always refer to these notes for guidance.

Common Maintenance Tips for the Vermeer BC1500

Regular maintenance is crucial for the longevity and performance of your Vermeer BC1500. Here are some tips to keep in mind:

- **Regular Inspections:** Frequently check the engine, cutting blades, and feed system for wear and tear.
- **Lubrication:** Keep all moving parts well-lubricated to prevent friction and overheating.
- **Sharpen Blades:** Regularly sharpen or replace cutting blades to ensure efficient chipping.
- **Check Fluids:** Monitor oil levels, hydraulic fluid, and coolant to ensure proper operation.
- **Clean Filters:** Clean or replace air and fuel filters to maintain engine efficiency.

Troubleshooting Common Issues

When operating the Vermeer BC1500, you may encounter some common issues. Here are a few troubleshooting tips:

1. Engine Won't Start

- Check the battery charge and connections.
- Ensure there is enough fuel in the tank.
- Inspect the ignition switch and wiring for faults.

2. Poor Chipping Performance

- Inspect and sharpen the cutting blades.
- Check for blockages in the feed system.
- Ensure the feed rollers are functioning correctly.

3. Excessive Vibrations

- Check for loose bolts or components.
- Inspect the blades for damage or imbalance.
- Ensure the machine is on a stable surface.

Conclusion

Understanding the **Vermeer BC1500 parts diagram** is essential for anyone involved in the maintenance or operation of this powerful brush chipper. By familiarizing yourself with the various components, following regular maintenance tips, and knowing how to troubleshoot common issues, you can ensure that your BC1500 operates efficiently and remains in good working condition. Always consult the parts diagram when working on your machine, and don't hesitate to reach out to professionals if you require assistance with more complex repairs or replacements.

Frequently Asked Questions

What is a Vermeer BC1500?

The Vermeer BC1500 is a compact and powerful brush chipper designed for efficient wood chipping and tree maintenance.

Where can I find a parts diagram for the Vermeer BC1500?

A parts diagram for the Vermeer BC1500 can be found on the official Vermeer website or in the owner's manual that comes with the machine.

Why is a parts diagram important for the Vermeer BC1500?

A parts diagram is important because it helps identify components, assists in maintenance, and aids in ordering the correct replacement parts.

What common parts might I need for my Vermeer BC1500?

Common parts for the Vermeer BC1500 may include blades, bearings, belts, and hydraulic components.

How do I interpret the parts diagram for the Vermeer BC1500?

To interpret the parts diagram, match the labeled parts with the corresponding numbers or codes in the list provided in the manual.

Can I purchase parts for the Vermeer BC1500 online?

Yes, parts for the Vermeer BC1500 can be purchased online through authorized Vermeer dealers and various industrial equipment websites.

What should I do if I can't find the parts diagram for the Vermeer BC1500?

If you can't find the parts diagram, contact Vermeer customer support or visit an authorized dealer for assistance.

Are there aftermarket parts available for the Vermeer BC1500?

Yes, there are aftermarket parts available for the Vermeer BC1500, but it's recommended to verify compatibility and quality.

How often should I consult the parts diagram of my Vermeer BC1500?

It's advisable to consult the parts diagram during routine maintenance, repairs, or when replacing worn-out components.

Find other PDF article:

<https://soc.up.edu.ph/53-scan/Book?docid=bHI28-2999&title=short-stories-by-isabel-allende.pdf>

Vermeer Bc1500 Parts Diagram

Download and install Google Chrome

On your computer, download a Chrome installer for a different computer. At the bottom of the page, under "Chrome Family," select Other Platforms. Select the OS of the device you wish to ...

Google Chrome - The Fast & Secure Web Browser Built to be Yours

Chrome is the official web browser from Google, built to be fast, secure, and customizable. Download now and make it yours.

Google Chrome Web Browser

Download Chrome on your mobile device or tablet and sign into your account for the same browser experience, everywhere. ... Installing Google Chrome will add the Google repository ...

Google Chrome - Download the fast, secure browser from Google

Get more done with the new Google Chrome. A more simple, secure and faster web browser than ever, with Google's smarts built in. Download now.

Google Chrome downloaden en installeren

Download op je computer een Chrome-installatieprogramma voor een andere computer. Selecteer onderaan de pagina onder Chrome-familie de optie Andere platforms. Selecteer het ...

🔍 [Google Chrome](#)

🔍 🔍 :🔍🔍 Google Chrome 🔍🔍 Google 🔍🔍🔍 🔍🔍🔍 🔍 🔍🔍 🔍🔍🔍🔍 🔍🔍🔍 🔍🔍🔍 Google Chrome 🔍 🔍🔍 🔍🔍🔍 🔍 ...

Google

Search the world's information, including webpages, images, videos and more. Google has many special features to help you find exactly what you're looking for.

Browser web Google Chrome

Download Chrome Browser ... Con l'installazione di Google Chrome verrà aggiunto il repository di Google per consentire al sistema di tenere automaticamente aggiornato Google Chrome. Se ...

Fazer o download e instalar o Google Chrome

Para usar o Chrome no Mac, você precisa do macOS Big Sur 11 ou uma versão mais recente. No computador, baixe o arquivo de instalação. Abra o arquivo chamado "googlechrome.dmg". O ...

Tải xuống và cài đặt Google Chrome

Để dùng Chrome trên máy Mac, bạn cần có macOS Big Sur 11 trở lên. Tải tệp cài đặt xuống máy tính. Mở tệp có tên là "googlechrome.dmg". Trong cửa sổ mở ra, bạn sẽ tìm thấy Chrome. ...

CalPhotos: Plants - University of California, Berkeley

Jun 5, 2024 · example: Mimulus tilingii (case unimportant) Common Name: case unimportant: Photo Type

CalPhotos

Jun 5, 2024 · Explore a diverse collection of photos showcasing plants, animals, and landscapes, hosted by CalPhotos.

CalPhotos: Browse Photos

Jun 5, 2024 · CalPhotos: Browse Photos Search Images. Browse Images. Plants. Fungi. Animals. People & Culture. Landscapes & Habitats

CalPhotos: Browse Plant Photos

3 days ago · Last updated: Jul 26 2025. Click on one of the links below to display a representative photo for each name in the range shown. Each link brings up 32 thumbnail photos.

CalPhotos: Frequently Asked Questions

May 26, 2025 · How can I get permission to use a photo for a commercial project? Commercial projects such as textbooks, journals, magazines, websites and similar publications often require permission from the photographer and/or organization that contributed the photo and may also require a licensing fee.

About CalPhotos - University of California, Berkeley

Jun 5, 2024 · CalPhotos has been on the web since 1995 and was one of the first online image databases specializing in natural history subjects. The database currently contains 794,384 digital images of plants, animals, and other natural history subjects, along with descriptive information including scientific and common names, location and dates of photos, and other information ...

CalPhotos Contributors

Around 3,000 photographers and reviewers have contributed to CalPhotos. To learn more about our contributors, click on one of the selections below.

CalPhotos Plants: Scientific Names [A]

Last updated: Jul 13 2025. see also: Browse Thumbnail Photos of Plants Abarema - Allium. Abarema cochliacarpus (10) Abelia grandiflora (3) Abelia X grandiflora (22) Abelmoschus esculentus (25) Abelmoschus manihot (2) Abelmoschus manihot ssp. manihot (1) Abelmoschus moschatus ssp. moschatus (1) Abelmoschus rhodopetalus (2) Abies alba (12) Abies amabilis ...

CalPhotos: Identifying Plants and Animals

Jun 5, 2024 · Here are some resources you can use to find get help with identifications of plants or animals you have observed. All Organisms (Plants, Animals, Fungi)

CalPhotos: Browse Invertebrate-Insect Common Names

Last updated: Jul 07 2025 . see also: Browse Insect Thumbnail Photos Click on one of the insect orders below to go to the list of photos for that order. Or scroll further down and click on a name to see all the insect photos in the database containing that name.

Explore our comprehensive Vermeer BC1500 parts diagram to easily identify components and enhance your equipment maintenance. Learn more for expert insights!

[Back to Home](#)