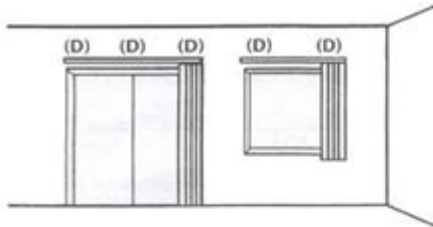


Vertical Blinds Installation Instructions

OUTSIDE WALL MOUNT

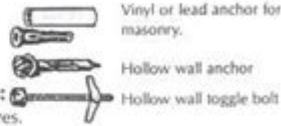
1) Wall Bracket (D) should be mounted so that the top of bracket is 3/4" taller than the total height of blinds - this allows for clearance at the bottom (if floor length). It should also be at least 2" from the door or window to allow for height of the bracket. Brackets should be mounted approximately 3" from each end of the headrail. Additional brackets should be equally spaced.



Fastener Guide

Mounting screws are included for wood or sheet metal surfaces.

Alternative Fasteners:
Available at hardware stores.



OUTSIDE MOUNT

2) Turn mounting clip on wall bracket sideways to allow easy access to the top screw hole in bracket. Fasten wall brackets to wall with fasteners suited for secure installation to your particular wall type. A screw in plain drywall or plaster will NOT provide a lasting installation. After brackets are securely mounted to wall, position the mounting clip (C) so the front of the clip is flush with the front of the wall bracket. Secure the mounting bracket by tightening the nut and bolt.

3) **INSTALL HEADRAIL** - (A) Snap headrail in place by inserting edge of headrail (A) into front edge of mounting clip (C) and rotating back until headrail snaps firmly in place.

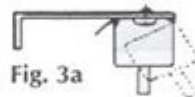


Fig. 3a

Fig. 3b
Mounting Clip

4) **INSTALL LOUVERS** - Rotate louvers stems with chain so that louvers will be installed in the open position. (Fig. 4)

Fig. 4
Stem Open
Position

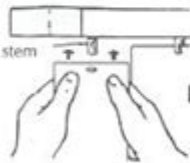


Fig. 5

Insert slotted end of louvers (Fig. 5) into stem as far as it will go, then gently pull down, approximately 1/4" to insure that it catches on hook. Be certain that hems on cloth louvers all face in the same direction.

Louvers can be removed (Fig. 6) by inserting a credit card between the louver and the leg of the stem that has the hook on it.



Fig. 6

Fig. 7

5) **INSTALL VALANCE** - Snap valance clip (K) onto top of headrail by setting front of clip retainer into front grooves of headrail first, then pushing down firmly on rear of valance clip until it snaps into place. Valance clips should be placed 4" from each end, remaining clips should be spaced evenly. (Fig. 9) Valance is then slid into valance clips. Valance ends (J) should be cut to desired length with heavy scissors. Valance end is then inserted into valance joint (I) and inserted to each end of valance. (Fig. 8) Be certain to allow adequate clearance between vanes and back of valance. (1/4" to 1/2")

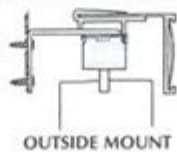
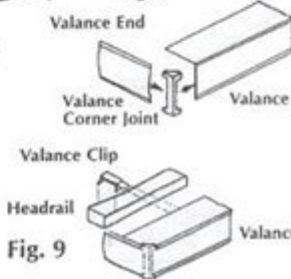


Fig. 8

OUTSIDE MOUNT



Valance End

Valance Corner Joint

Valance Clip

Headrail

VERTICAL BLINDS INSTALLATION INSTRUCTIONS ARE ESSENTIAL FOR ANYONE LOOKING TO ENHANCE THEIR HOME OR OFFICE SPACE WITH AN ELEGANT AND FUNCTIONAL WINDOW TREATMENT. VERTICAL BLINDS OFFER A MODERN ALTERNATIVE TO TRADITIONAL CURTAINS AND DRAPES, PROVIDING EXCELLENT LIGHT CONTROL AND PRIVACY. THIS ARTICLE WILL GUIDE YOU THROUGH THE STEP-BY-STEP PROCESS OF INSTALLING VERTICAL BLINDS, ENSURING A PROFESSIONAL FINISH THAT YOU CAN BE PROUD OF.

WHY CHOOSE VERTICAL BLINDS?

VERTICAL BLINDS HAVE GAINED POPULARITY DUE TO THEIR VERSATILITY AND PRACTICALITY. HERE ARE SOME REASONS WHY YOU MIGHT CONSIDER THEM FOR YOUR WINDOWS:

- **LIGHT CONTROL:** VERTICAL BLINDS CAN BE ADJUSTED TO ALLOW VARYING DEGREES OF LIGHT INTO A ROOM WHILE

MAINTAINING PRIVACY.

- SPACE-SAVING: THEY TAKE UP MINIMAL SPACE WHEN FULLY OPENED, MAKING THEM IDEAL FOR SMALLER ROOMS OR SPACES WITH LIMITED WINDOW AREAS.
- VARIETY OF STYLES: AVAILABLE IN VARIOUS MATERIALS, COLORS, AND PATTERNS, VERTICAL BLINDS CAN COMPLEMENT ANY DECOR STYLE.
- EASY MAINTENANCE: MOST VERTICAL BLINDS ARE EASY TO CLEAN AND MAINTAIN, OFTEN REQUIRING JUST A SIMPLE DUSTING OR WIPE DOWN WITH A DAMP CLOTH.

WHAT YOU WILL NEED

BEFORE YOU BEGIN THE INSTALLATION PROCESS, IT'S IMPORTANT TO GATHER ALL THE NECESSARY TOOLS AND MATERIALS. HERE'S A LIST OF WHAT YOU WILL NEED:

- TOOLS:
 - MEASURING TAPE
 - LEVEL
 - PENCIL
 - DRILL
 - SCREWDRIVER
 - LADDER (IF NECESSARY)
- MATERIALS:
 - VERTICAL BLINDS KIT (INCLUDES HEADRAIL, VANES, AND MOUNTING BRACKETS)
 - SCREWS (USUALLY PROVIDED WITH THE BLINDS)
 - WALL ANCHORS (IF MOUNTING ON DRYWALL)

PREPARATION STEPS

PROPER PREPARATION IS KEY TO A SUCCESSFUL VERTICAL BLINDS INSTALLATION. FOLLOW THESE STEPS TO ENSURE EVERYTHING IS READY FOR INSTALLATION:

1. MEASURE YOUR WINDOWS

ACCURATE MEASUREMENTS WILL GUARANTEE A PERFECT FIT. HERE'S HOW TO MEASURE:

- FOR INSIDE MOUNT:
 - MEASURE THE WIDTH OF THE WINDOW OPENING AT THE TOP, MIDDLE, AND BOTTOM. USE THE NARROWEST MEASUREMENT.
 - MEASURE THE HEIGHT OF THE WINDOW OPENING FROM THE TOP TO THE WINDOWSILL IN THREE PLACES (LEFT, MIDDLE, RIGHT) AND USE THE LONGEST MEASUREMENT.
- FOR OUTSIDE MOUNT:
 - MEASURE THE WIDTH OF THE AREA YOU WANT TO COVER. IT'S RECOMMENDED TO ADD 3 TO 4 INCHES ON EACH SIDE FOR MAXIMUM LIGHT CONTROL AND PRIVACY.
 - MEASURE THE HEIGHT FROM THE TOP OF THE MOUNTING SURFACE TO THE DESIRED LENGTH OF THE BLINDS.

2. UNPACK AND ORGANIZE THE COMPONENTS

CAREFULLY UNPACK YOUR VERTICAL BLINDS KIT AND ORGANIZE ALL COMPONENTS. YOU SHOULD FIND:

- HEADRAIL

- VERTICAL VANES (THE BLINDS)
- MOUNTING BRACKETS
- SCREWS AND WALL ANCHORS
- INSTALLATION INSTRUCTIONS (ALWAYS REFER TO THE SPECIFIC INSTRUCTIONS INCLUDED WITH YOUR BLINDS)

INSTALLATION STEPS

NOW THAT YOU HAVE EVERYTHING YOU NEED, IT'S TIME TO INSTALL YOUR VERTICAL BLINDS. FOLLOW THESE STEPS FOR A SUCCESSFUL INSTALLATION:

1. MARK THE MOUNTING BRACKET LOCATIONS

- IF YOU ARE DOING AN INSIDE MOUNT, POSITION THE HEADRAIL IN THE WINDOW FRAME AND MARK WHERE THE MOUNTING BRACKETS WILL GO. ENSURE THEY ARE EVENLY SPACED FROM THE ENDS OF THE HEADRAIL.
- FOR OUTSIDE MOUNT, HOLD THE HEADRAIL ABOVE THE WINDOW FRAME AND MARK THE BRACKET LOCATIONS.

2. INSTALL THE MOUNTING BRACKETS

- USE A LEVEL TO ENSURE THAT YOUR BRACKETS ARE STRAIGHT.
- DRILL PILOT HOLES AT YOUR MARKED LOCATIONS. IF YOU ARE INSTALLING ON DRYWALL, USE WALL ANCHORS FOR BETTER SUPPORT.
- ATTACH THE MOUNTING BRACKETS USING SCREWS. TIGHTEN THEM SECURELY.

3. ATTACH THE HEADRAIL

- ALIGN THE HEADRAIL WITH THE INSTALLED BRACKETS. MOST HEADRAILS HAVE A CLIP OR HOOK MECHANISM.
- SLIDE THE HEADRAIL INTO THE BRACKETS AND PUSH IT BACK UNTIL IT CLICKS INTO PLACE. MAKE SURE IT IS SECURE AND LEVEL.

4. INSTALL THE VERTICAL VANES

- TAKE EACH VERTICAL VANE AND ATTACH IT TO THE HEADRAIL. MOST VANES HAVE A CLIP OR HOOK AT THE TOP THAT CONNECTS TO THE HEADRAIL.
- ENSURE THAT THE VANES ARE EVENLY SPACED AND HANG STRAIGHT.

5. SET UP THE CONTROL MECHANISM

- DEPENDING ON YOUR VERTICAL BLIND MODEL, YOU MAY HAVE A CORD OR A WAND CONTROL MECHANISM.
- FOLLOW THE MANUFACTURER'S INSTRUCTIONS TO ATTACH AND ADJUST THE CONTROL MECHANISM. ENSURE THAT IT OPERATES SMOOTHLY AND THAT THE BLINDS CAN OPEN AND CLOSE PROPERLY.

6. FINAL ADJUSTMENTS

- ONCE ALL VANES ARE IN PLACE, TEST THE OPERATION OF YOUR VERTICAL BLINDS. OPEN AND CLOSE THE BLINDS, AND ADJUST AS NECESSARY.

- CHECK FOR ANY UNEVEN VANES AND MAKE MINOR ADJUSTMENTS TO ENSURE THEY HANG STRAIGHT.

MAINTENANCE TIPS FOR VERTICAL BLINDS

TO KEEP YOUR VERTICAL BLINDS LOOKING THEIR BEST, REGULAR MAINTENANCE IS ESSENTIAL:

- DUST REGULARLY: USE A SOFT FEATHER DUSTER OR A DAMP CLOTH TO WIPE DOWN THE VANES REGULARLY. THIS PREVENTS DUST BUILDUP AND KEEPS THEM LOOKING FRESH.
- SPOT CLEAN STAINS: FOR ANY STAINS, USE A MILD DETERGENT AND WARM WATER. GENTLY SCRUB WITH A SOFT CLOTH.
- CHECK MECHANISMS: PERIODICALLY CHECK THE CONTROL MECHANISMS TO ENSURE THEY ARE WORKING PROPERLY. LUBRICATE IF NECESSARY.
- REPLACE DAMAGED VANES: IF A VANE BECOMES DAMAGED, REPLACE IT AS SOON AS POSSIBLE TO MAINTAIN THE APPEARANCE AND FUNCTIONALITY OF YOUR BLINDS.

CONCLUSION

INSTALLING VERTICAL BLINDS MAY SEEM DAUNTING AT FIRST, BUT WITH THE RIGHT TOOLS, MEASUREMENTS, AND A LITTLE PATIENCE, YOU CAN ACHIEVE A PROFESSIONAL LOOK IN YOUR HOME OR OFFICE. BY FOLLOWING THE STEPS OUTLINED IN THIS GUIDE, YOU WILL ENJOY THE BENEFITS OF IMPROVED LIGHT CONTROL, PRIVACY, AND AESTHETIC APPEAL IN YOUR SPACE. REMEMBER, REGULAR MAINTENANCE WILL HELP EXTEND THE LIFE OF YOUR VERTICAL BLINDS, ENSURING THEY REMAIN A STYLISH AND FUNCTIONAL ADDITION TO YOUR WINDOWS FOR YEARS TO COME.

FREQUENTLY ASKED QUESTIONS

WHAT TOOLS ARE NEEDED FOR VERTICAL BLINDS INSTALLATION?

YOU WILL NEED A DRILL, SCREWDRIVER, LEVEL, MEASURING TAPE, AND A PENCIL FOR MARKING.

HOW DO I MEASURE THE WINDOW FOR VERTICAL BLINDS?

MEASURE THE WIDTH AND HEIGHT OF THE WINDOW FRAME. FOR INSIDE MOUNTS, SUBTRACT 1/4 INCH FROM THE WIDTH FOR A PROPER FIT. FOR OUTSIDE MOUNTS, ADD 3 TO 4 INCHES TO THE WIDTH AND HEIGHT.

WHAT IS THE FIRST STEP IN INSTALLING VERTICAL BLINDS?

THE FIRST STEP IS TO GATHER ALL NECESSARY TOOLS AND MATERIALS, THEN MEASURE YOUR WINDOW TO DETERMINE THE CORRECT SIZE OF THE BLINDS.

HOW DO I INSTALL THE HEADRAIL FOR VERTICAL BLINDS?

MARK THE INSTALLATION BRACKETS ON THE WALL OR CEILING BASED ON YOUR MEASUREMENTS, DRILL PILOT HOLES, ATTACH THE BRACKETS, AND THEN SLIDE THE HEADRAIL INTO PLACE.

WHAT SHOULD I DO IF THE VERTICAL BLINDS ARE TOO LONG?

IF THE VERTICAL BLINDS ARE TOO LONG, YOU CAN TRIM THE BOTTOM OF THE VANES WITH A SHARP PAIR OF SCISSORS OR A UTILITY KNIFE, OR ADJUST THE CHAIN THAT HOLDS THEM.

HOW DO I ENSURE THE VERTICAL BLINDS ARE LEVEL AFTER INSTALLATION?

USE A LEVEL TOOL TO CHECK THE ALIGNMENT OF THE HEADRAIL AND ADJUST THE BRACKETS AS NECESSARY BEFORE SECURING

THEM FULLY.

CAN I INSTALL VERTICAL BLINDS WITHOUT PROFESSIONAL HELP?

YES, VERTICAL BLINDS CAN BE INSTALLED BY MOST HOMEOWNERS WITH BASIC TOOLS AND FOLLOWING THE MANUFACTURER'S INSTRUCTIONS, MAKING IT A MANAGEABLE DIY PROJECT.

Find other PDF article:

<https://soc.up.edu.ph/23-write/Book?ID=PkJ11-6332&title=free-ocn-practice-questions.pdf>

Vertical Blinds Installation Instructions

Jequiti com Você

Envie seus pedidos através do Jequiti Com Você. área exclusiva para Consultoras e Consultores Jequiti. Faça login para ter acesso ao conteúdo.

Jequiti Loja Online | Promoções de Perfumes, Maquiagens e ...

Confira os Lançamento e as Promoções de Perfumes, Maquiagens e Cosméticos na Loja Online Jequiti. Encontre Presentes e Mais. Aproveite!

Seja uma Consultora | Jequiti Cosméticos

COM A JEQUITI VOCÊ PODE! Cadastre-se aqui para ser uma Consultora ou Consultor Jequiti. Faça seu cadastro online na Jequiti e tenha acesso a benefícios exclusivos.

Jequiti

Página oficial da Jequiti com informações e serviços para consultores e clientes.

Perfumaria - promocoas - Jequiti

Confira os Lançamento e as Promoções de Perfumes, Maquiagens e Cosméticos na Loja Online Jequiti. Encontre Presentes e Mais. Aproveite!

O novo Jequiti Com Você

Apr 3, 2014 · Agora, você, consultora ou consultor, poderá fazer seus pedidos e realizar diversos procedimentos, como registrar ocorrências e alterações em sua senha, com apenas um clique ...

Catalogo digital Jequiti

Catalogo digital Jequiti: perfumaria, maquiagem, itens de higiene pessoal e muito mais. Compre sem sair de casa diretamente com consultora pelo Whatsapp.

Saiba mais sobre a Jequiti e conheça todos os nossos produtos!

Conheça nossas linhas Aviva e Ellas com batons e esmaltes em cores e texturas incríveis, além de produtos para olhos, pele, paletas, pincéis e kits. Ou seja, todos os itens que você precisa, ...

Minha Loja Online - Consultoras Digitais - Jequiti

Confira os Lançamento e as Promoções de Perfumes, Maquiagens e Cosméticos na Loja Online Jequiti. Encontre Presentes e Mais. Aproveite!

Aplicativo Jequití Com Você: Como Funciona e Como Acessar

Para facilitar o trabalho das revendedoras e aumentar sua eficiência, a Jequití desenvolveu o aplicativo Jequití Com Você. Essa ferramenta oferece uma maneira rápida e conveniente de ...

Where can I download Gmail App for Windows - Google Help

Where can I download Gmail App for Windows There isn't any official Gmail app for Windows PC although 3rd party app available. It's not a good idea installing other app due to security ...

How do I install the gmail app on my windows 11 pc laptop?

Windows: Step 1. Open Gmail in Chrome, and make sure you are signed into your account. Step 2. In the Chrome menu, click the three vertical dots located at the top right corner. Proceed to ...

Gmail Message Recovery Tool - Google Help

Gmail Message Recovery Tool Recover your emails that might have been deleted due to someone accessing your account without permission. Ready to get started?

Update your Gmail app - Android - Gmail Help - Google Help

With the latest Gmail app, you'll get: Faster Gmail Better security New features, like email blocking and new formatting options Tip: If you use an older version of Gmail, the app may ask ...

Day 1: Set up Chrome browser, Gmail & Calendar - Google Help

Here's a checklists of tasks we recommend for your first day with Google Workspace Set up Chrome browser Set up your Gmail inbox Get up to speed using Gmail Set up your Google ...

Download photos or videos to your device

Tips: To move all your photos to a different Google Account, download all your photos and upload them to the new Google Account in Google Photos. Learn how to add photos and videos to ...

Open & download attachments in Gmail - Computer - Gmail Help

Open & download attachments in Gmail When you get an email with an attachment, you can download the attachment to your device. Computer Android iPhone & iPad

1. Download & install GWSMO - Google Workspace Learning Center

Before you download and install Google Workspace Sync for Microsoft Outlook (GWSMO), you need to take some setup steps. Then, depending on what your administrator decides, you can ...

Anti-virus scanning attachments - Gmail Help

When Gmail finds a known virus attached to an email that's been sent to you, Gmail will reject the message and let the sender know. If Gmail finds a virus in an attachment on an email that's ...

Send & open confidential emails - Computer - Gmail Help

You can send messages and attachments with Gmail's confidential mode to help protect sensitive information from unauthorized access. You can use confidential mode to set an expiration date ...

"Discover how to easily install vertical blinds with our step-by-step installation instructions. Transform your space today! Learn more for expert tips."

[Back to Home](#)