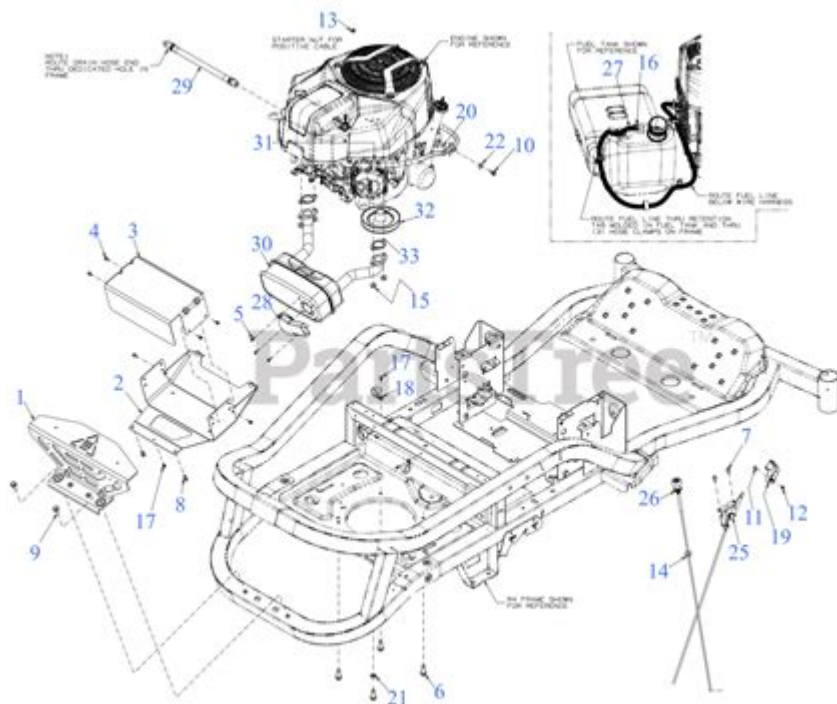


Troy Bilt Mustang 42 Parts Diagram



Troy Bilt Mustang 42 Parts Diagram

The Troy Bilt Mustang 42 is a popular riding lawn mower known for its durability, efficiency, and ease of use. As with any piece of machinery, understanding the parts that make up the Mustang 42 is crucial for maintenance, repairs, and replacements. A parts diagram serves as an invaluable resource, providing a visual representation of the mower's components. This comprehensive article will delve into the parts diagram of the Troy Bilt Mustang 42, detailing the various components, their functions, and tips for maintenance.

Overview of the Troy Bilt Mustang 42

The Troy Bilt Mustang 42 is designed for residential lawn care, offering a 42-inch cutting deck and a powerful engine that makes mowing large lawns a breeze. Key features include:

- 42-inch cutting deck: Provides a wide cutting path, reducing mowing time.
- Powerful engine: Typically powered by a 19-21 horsepower engine, capable of handling tough grass conditions.
- Hydrostatic transmission: Offers smooth and easy speed control without needing to shift gears.
- Comfortable seating: Designed for long mowing sessions with ergonomic seating.

Understanding each part of the Mustang 42 is essential for effective operation and

maintenance.

Importance of a Parts Diagram

A parts diagram is more than just a visual aid; it serves multiple purposes, including:

- Identifying components: Helps users know what parts are present and where they are located.
- Guiding repairs: Provides a reference for disassembly and reassembly during repairs.
- Ordering parts: Assists in identifying specific parts that need replacement, making it easier to order the correct items.

The diagram can often be found in the owner's manual or through the manufacturer's website.

Components of the Mustang 42 Parts Diagram

The parts diagram for the Troy Bilt Mustang 42 can be divided into several key sections, each containing multiple components. Below is a breakdown of these sections and their respective parts.

1. Engine Assembly

The engine assembly is the heart of the lawn mower, providing the power needed for operation. Key components include:

- Engine block
- Cylinder head
- Piston and rings
- Crankshaft
- Fuel tank
- Air filter
- Spark plug

Each of these parts plays a crucial role in the engine's performance. Regular maintenance, such as changing the oil and replacing the air filter, is essential to keep the engine running smoothly.

2. Cutting Deck Assembly

The cutting deck is where the mowing action occurs. Its components include:

- Deck housing

- Mower blades
- Spindle assembly
- Deck lift lever
- Anti-scalp wheels

The cutting deck must be maintained to ensure a clean cut and even grass height. Sharpening the blades and cleaning the deck after each use can improve performance and longevity.

3. Transmission Assembly

The hydrostatic transmission assembly allows for smooth acceleration and deceleration. Important parts include:

- Transmission housing
- Drive belt
- Pulleys
- Hydrostatic pump

Regular inspection of the transmission components can prevent issues related to speed control and overall performance.

4. Chassis and Frame

The chassis and frame provide structural integrity to the lawn mower. Key components include:

- Main frame
- Front axle
- Rear axle
- Wheels and tires
- Steering assembly

Maintaining the chassis is vital for stability and safety during operation. Check for any signs of wear or damage, especially on the wheels and axles.

5. Electrical System

The electrical system powers various components, including the starter and lights. Important parts include:

- Battery
- Ignition switch
- Wiring harness
- Fuse

Maintaining the electrical system involves checking connections and ensuring the battery is charged and functioning correctly.

6. Fuel System

The fuel system is responsible for delivering fuel to the engine. Key components include:

- Fuel line
- Fuel filter
- Carburetor
- Fuel pump

Regularly replacing the fuel filter and ensuring the fuel lines are free from blockages can help maintain engine performance.

7. Miscellaneous Parts

In addition to the primary assemblies, several miscellaneous parts contribute to the overall functioning of the mower. These parts include:

- Belts: Drive belts and mower deck belts must be checked regularly for wear.
- Bolts and fasteners: Essential for securing components together; ensure they are tight and free from rust.
- Deck wash port: Allows for easy cleaning of the cutting deck.

Maintenance Tips for the Troy Bilt Mustang 42

Proper maintenance is key to keeping the Troy Bilt Mustang 42 running efficiently. Here are some essential maintenance tips:

1. Regular Oil Changes: Change the engine oil every 50 hours of operation or at the beginning of each mowing season.
2. Sharpen Blades: Sharpen mower blades at least once a season or more often if cutting dense grass.
3. Clean Air Filter: Check and clean the air filter regularly to ensure optimal airflow to the engine.
4. Inspect Belts and Cables: Look for signs of wear or fraying in belts and cables, replacing them as necessary.
5. Check Tire Pressure: Keep tires properly inflated for better traction and even cutting.
6. Clean the Deck: After mowing, remove grass clippings from the cutting deck to prevent buildup and rust.
7. Battery Maintenance: Check battery connections and clean any corrosion that may develop.

Where to Find Replacement Parts

When repairs or replacements are needed, finding the right parts is crucial. Here are some options for sourcing replacement parts for the Troy Bilt Mustang 42:

- Troy Bilt Official Website: The manufacturer often sells genuine parts directly through their website.
- Authorized Dealers: Local Troy Bilt dealerships may have the necessary parts in stock or can order them for you.
- Online Retailers: Websites like Amazon, eBay, and specialized lawn mower parts retailers often carry a wide range of replacement parts.
- Local Hardware Stores: Some local hardware stores may stock common replacement parts for lawn mowers.

When ordering parts, always ensure you have the model number and part number (if available) to avoid confusion.

Conclusion

Understanding the Troy Bilt Mustang 42 parts diagram is essential for any owner looking to maintain and repair their riding lawn mower effectively. Familiarity with the various components and their functions will not only facilitate easier repairs but also enhance the overall lifespan and efficiency of the mower. Regular maintenance, careful inspection, and timely replacement of parts will ensure that the Mustang 42 continues to operate at its best, providing a clean and efficient mowing experience for years to come. By utilizing the resources available and following best practices in maintenance, owners can enjoy a reliable mower that meets their lawn care needs.

Frequently Asked Questions

What is a Troy-Bilt Mustang 42?

The Troy-Bilt Mustang 42 is a riding lawn mower known for its durability and efficiency, featuring a 42-inch cutting deck and a powerful engine, suitable for medium to large-sized yards.

Where can I find the parts diagram for the Troy-Bilt Mustang 42?

You can find the parts diagram for the Troy-Bilt Mustang 42 on the official Troy-Bilt website, in the owner's manual, or through authorized dealers and parts retailers.

Why is a parts diagram important for the Troy-Bilt

Mustang 42?

A parts diagram is important because it helps users identify and locate specific components for maintenance, repairs, or replacement, ensuring proper assembly and functionality.

What are common replacement parts for the Troy-Bilt Mustang 42?

Common replacement parts for the Troy-Bilt Mustang 42 include the mower blades, belts, air filters, spark plugs, and battery.

How can I interpret the Troy-Bilt Mustang 42 parts diagram?

To interpret the parts diagram, look for labeled sections that indicate different components of the mower, noting the part numbers and descriptions for easy reference when ordering parts.

Are there aftermarket parts available for the Troy-Bilt Mustang 42?

Yes, there are aftermarket parts available for the Troy-Bilt Mustang 42, but it's essential to ensure they are compatible and of good quality to maintain mower performance.

What tools do I need to replace parts on the Troy-Bilt Mustang 42?

You typically need basic hand tools such as wrenches, socket sets, screwdrivers, and possibly specialty tools depending on the part being replaced.

Is it necessary to consult a professional for repairs on the Troy-Bilt Mustang 42?

While many repairs can be done by homeowners with basic mechanical skills, consulting a professional may be advisable for complex issues or if you are unsure about the repair process.

Find other PDF article:

<https://soc.up.edu.ph/63-zoom/pdf?ID=wZp17-7989&title=treasure-of-nadia-puzzles-guide-7.pdf>

[Troy Bilt Mustang 42 Parts Diagram](#)

It is best known as the setting for the Greek myth of the Trojan War. The archaeological site is open to the public as a tourist destination, and was added to the UNESCO World Heritage list ...

Troy (2004) - IMDb

May 14, 2004 · Troy: Directed by Wolfgang Petersen. With Julian Glover, Brian Cox, Nathan Jones, Adoni Maropis. An adaptation of Homer's great epic, the film follows the assault on ...

Where Was Troy And What Happened To It? - WorldAtlas

Oct 13, 2022 · Troy was an ancient Bronze Age city located in modern-day Turkey. It was also the legendary setting for Homer's epic poems, the Iliad and the Odyssey, mentioned in the ...

Troy streaming: where to watch movie online? - JustWatch

Find out how and where to watch "Troy" online on Netflix, Prime Video, and Disney+ today - including 4K and free options.

Troy (film) - Wikipedia

Troy is a 2004 epic historical action film directed by Wolfgang Petersen and written by David Benioff.

Troy (2004) - Full cast & crew - IMDb

Troy (2004) - Cast and crew credits, including actors, actresses, directors, writers and more.

Trojan War - Wikipedia

The war was waged by the Achaeans (Greeks) against the city of Troy after Paris of Troy took Helen from her husband Menelaus, king of Sparta. The war is one of the most important ...

Home | Troy Life & Fire Safety Ltd.

Troy Life & Fire Safety Ltd. is one of the largest suppliers of Fire Alarm, Fire Suppression, Security, Nurse call and Communications Systems in Canada. As an Edwards Authorized ...

Troy - Prime Video

Based on the epic poem The Iliad by Homer.

Troy Apple Premium Partner | Troyestore

Uzman ekiplerden teknik destek alın Apple ürünleriniz için destek yetkili servis Troy'da! Hemen randevunuzu oluşturup teknik servis hizmeti alın.

Troy - Wikipedia

It is best known as the setting for the Greek myth of the Trojan War. The archaeological site is open to the public as a tourist destination, and was added to the UNESCO World Heritage list ...

Troy (2004) - IMDb

May 14, 2004 · Troy: Directed by Wolfgang Petersen. With Julian Glover, Brian Cox, Nathan Jones, Adoni Maropis. An adaptation of Homer's great epic, the film follows the assault on ...

Where Was Troy And What Happened To It? - WorldAtlas

Oct 13, 2022 · Troy was an ancient Bronze Age city located in modern-day Turkey. It was also the legendary setting for Homer's epic poems, the Iliad and the Odyssey, mentioned in the ...

Troy streaming: where to watch movie online? - JustWatch

Find out how and where to watch "Troy" online on Netflix, Prime Video, and Disney+ today -

including 4K and free options.

Troy (film) - Wikipedia

Troy is a 2004 epic historical action film directed by Wolfgang Petersen and written by David Benioff.

Troy (2004) - Full cast & crew - IMDb

Troy (2004) - Cast and crew credits, including actors, actresses, directors, writers and more.

Trojan War - Wikipedia

The war was waged by the Achaeans (Greeks) against the city of Troy after Paris of Troy took Helen from her husband Menelaus, king of Sparta. The war is one of the most important ...

Home | Troy Life & Fire Safety Ltd.

Troy Life & Fire Safety Ltd. is one of the largest suppliers of Fire Alarm, Fire Suppression, Security, Nurse call and Communications Systems in Canada. As an Edwards Authorized ...

Troy - Prime Video

Based on the epic poem The Iliad by Homer.

Troy Apple Premium Partner | Troyestore

Uzman ekiplerden teknik destek alın Apple ürünleriniz için destek yetkili servis Troy'da! Hemen randevunuzu oluşturup teknik servis hizmeti alın.

Explore the Troy Bilt Mustang 42 parts diagram to easily identify components and simplify repairs. Learn more to keep your mower running smoothly!

[Back to Home](#)