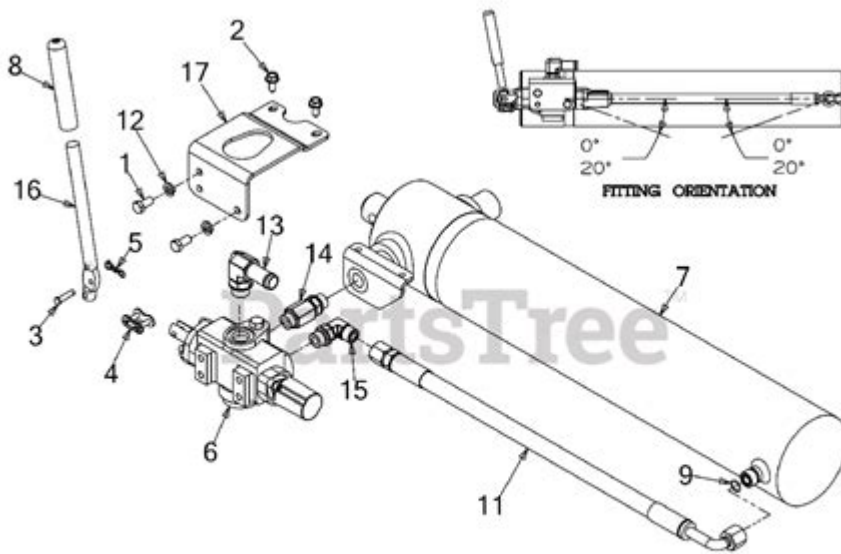


# Troy Bilt 27 Ton Log Splitter Parts Diagram



TROY BILT 27 TON LOG SPLITTER PARTS DIAGRAM IS AN ESSENTIAL RESOURCE FOR ANYONE WHO OWNS OR MAINTAINS THIS POWERFUL PIECE OF EQUIPMENT. A LOG SPLITTER IS A VITAL TOOL FOR ANYONE WHO REGULARLY HANDLES FIREWOOD OR ENGAGES IN WOODWORKING PROJECTS. UNDERSTANDING THE PARTS OF YOUR TROY BILT 27 TON LOG SPLITTER IS CRUCIAL FOR EFFICIENT OPERATION, MAINTENANCE, AND REPAIRS. THIS ARTICLE DELVES INTO THE VARIOUS COMPONENTS OF THE LOG SPLITTER, THEIR FUNCTIONS, AND HOW TO INTERPRET THE PARTS DIAGRAM EFFECTIVELY.

## UNDERSTANDING THE TROY BILT 27 TON LOG SPLITTER

THE TROY BILT 27 TON LOG SPLITTER IS DESIGNED TO HANDLE TOUGH SPLITTING JOBS WITH EASE. IT IS EQUIPPED WITH A POWERFUL ENGINE AND HYDRAULIC SYSTEM THAT ENABLE IT TO SPLIT LOGS OF VARYING SIZES AND DENSITIES. BEFORE DIVING INTO THE PARTS DIAGRAM, IT'S BENEFICIAL TO HAVE A BASIC UNDERSTANDING OF HOW THE LOG SPLITTER OPERATES.

## How It Works

THE LOG SPLITTER USES HYDRAULIC PRESSURE TO DRIVE A WEDGE THROUGH LOGS. WHEN THE OPERATOR ACTIVATES THE SPLITTER, THE HYDRAULIC PUMP DRAWS FLUID FROM THE RESERVOIR AND SENDS IT TO THE HYDRAULIC CYLINDER. THIS ACTION PUSHES THE WEDGE FORWARD, SPLITTING THE WOOD. HERE ARE THE MAIN COMPONENTS INVOLVED IN THIS OPERATION:

- ENGINE: POWERS THE HYDRAULIC PUMP.
- HYDRAULIC PUMP: CONVERTS MECHANICAL ENERGY FROM THE ENGINE INTO HYDRAULIC ENERGY.
- HYDRAULIC CYLINDER: HOUSES THE PISTON THAT DRIVES THE WEDGE.
- WEDGE: THE SHARP, ANGLED PIECE THAT SPLITS THE WOOD.
- FRAME: PROVIDES STRUCTURE AND STABILITY TO THE ENTIRE UNIT.

# PARTS OF THE TROY BILT 27 TON LOG SPLITTER

TO EFFECTIVELY USE AND MAINTAIN YOUR LOG SPLITTER, IT IS IMPORTANT TO FAMILIARIZE YOURSELF WITH ITS VARIOUS PARTS. BELOW IS A BREAKDOWN OF THE KEY COMPONENTS FOUND IN THE TROY BILT 27 TON LOG SPLITTER PARTS DIAGRAM.

## 1. ENGINE

THE ENGINE IS THE HEART OF THE LOG SPLITTER. IT USUALLY HAS A HORSEPOWER RATING THAT INFLUENCES THE MACHINE'S SPLITTING CAPABILITIES. COMMON TYPES INCLUDE:

- GASOLINE ENGINES: MOST TROY BILT LOG SPLITTERS ARE POWERED BY GASOLINE ENGINES, WHICH PROVIDE THE NECESSARY POWER FOR HEAVY-DUTY SPLITTING.
- ELECTRIC ENGINES: SOME MODELS MAY OFFER ELECTRIC OPTIONS FOR CONVENIENCE IN RESIDENTIAL SETTINGS.

## 2. HYDRAULIC SYSTEM

THE HYDRAULIC SYSTEM IS CRUCIAL FOR THE SPLITTER'S OPERATION. IT CONSISTS OF SEVERAL COMPONENTS:

- HYDRAULIC PUMP: CONVERTS ENGINE POWER INTO HYDRAULIC PRESSURE.
- HYDRAULIC RESERVOIR: HOLDS HYDRAULIC FLUID THAT IS USED IN THE SYSTEM.
- HYDRAULIC HOSES: TRANSPORT HYDRAULIC FLUID BETWEEN COMPONENTS.
- HYDRAULIC FILTER: CLEANS THE FLUID TO PREVENT CONTAMINATION AND ENSURE SYSTEM LONGEVITY.

## 3. WEDGE ASSEMBLY

THE WEDGE IS THE COMPONENT THAT DOES THE ACTUAL SPLITTING. IT CAN VARY IN DESIGN BUT TYPICALLY CONSISTS OF:

- WEDGE BLADE: THE SHARP EDGE THAT PENETRATES THE WOOD.
- WEDGE HOUSING: SUPPORTS THE WEDGE AND CONNECTS IT TO THE HYDRAULIC CYLINDER.

## 4. FRAME AND CHASSIS

THE FRAME PROVIDES STABILITY AND STRUCTURE TO THE LOG SPLITTER. KEY ASPECTS INCLUDE:

- MAIN FRAME: THE BACKBONE OF THE SPLITTER, OFTEN MADE OF HEAVY-DUTY STEEL.
- WHEELS: ALLOW FOR EASY TRANSPORTATION OF THE MACHINE.
- LEGS OR FEET: PROVIDE STABILITY DURING OPERATION.

## 5. CONTROL SYSTEM

THE CONTROL SYSTEM ALLOWS THE OPERATOR TO MANAGE THE LOG SPLITTER'S FUNCTIONS SAFELY. IT TYPICALLY INCLUDES:

- THROTTLE CONTROL: ADJUSTS ENGINE SPEED.
- SPLIT CONTROL LEVER: ENGAGES THE HYDRAULIC CYLINDER TO SPLIT LOGS.
- SAFETY SWITCHES: ENSURE THAT THE SPLITTER OPERATES SAFELY, PREVENTING ACCIDENTAL ENGAGEMENT.

# PARTS DIAGRAM INTERPRETATION

UNDERSTANDING THE PARTS DIAGRAM IS ESSENTIAL FOR TROUBLESHOOTING, REPAIRS, AND MAINTENANCE. HERE'S HOW TO INTERPRET IT EFFECTIVELY.

## 1. FAMILIARIZE YOURSELF WITH SYMBOLS

PARTS DIAGRAMS USE SPECIFIC SYMBOLS TO REPRESENT DIFFERENT COMPONENTS. HERE ARE SOME COMMON SYMBOLS YOU MAY ENCOUNTER:

- CIRCLES: OFTEN REPRESENT BOLTS OR SCREWS.
- LINES: INDICATE HYDRAULIC HOSES OR ELECTRICAL WIRING.
- BOXES: CAN REPRESENT THE ENGINE OR HYDRAULIC RESERVOIR.

## 2. REFERENCE NUMBERS

EACH COMPONENT IN THE DIAGRAM IS USUALLY ACCOMPANIED BY A REFERENCE NUMBER. THIS NUMBER CORRESPONDS TO A PARTS LIST THAT DETAILS THE PART NAME, DESCRIPTION, AND SOMETIMES THE PART NUMBER FOR ORDERING REPLACEMENTS.

## 3. LAYOUT UNDERSTANDING

THE LAYOUT OF THE PARTS DIAGRAM IS TYPICALLY ORGANIZED LOGICALLY, OFTEN STARTING FROM THE ENGINE AND MOVING THROUGH THE HYDRAULIC SYSTEM TO THE WEDGE ASSEMBLY. FAMILIARIZING YOURSELF WITH THIS LAYOUT WILL HELP YOU LOCATE PARTS QUICKLY.

# COMMON MAINTENANCE TASKS

REGULAR MAINTENANCE IS VITAL TO KEEP YOUR TROY BILT 27 TON LOG SPLITTER IN TOP CONDITION. HERE ARE SOME COMMON TASKS:

## 1. OIL CHANGES

ROUTINE OIL CHANGES ARE ESSENTIAL FOR OPTIMAL ENGINE PERFORMANCE. TYPICALLY, IT IS RECOMMENDED TO CHANGE THE OIL AFTER THE FIRST 5 HOURS OF OPERATION AND THEN EVERY 50 HOURS THEREAFTER.

## 2. HYDRAULIC FLUID CHECKS

MONITOR THE HYDRAULIC FLUID LEVEL REGULARLY. IF IT'S LOW, REFILL WITH THE APPROPRIATE TYPE OF HYDRAULIC FLUID AS SPECIFIED IN THE MANUAL.

## 3. WEDGE SHARPENING

TO MAINTAIN EFFECTIVE SPLITTING, ENSURE THAT THE WEDGE IS SHARP. SHARPEN IT AS NEEDED, USING A FILE OR GRINDER.

## 4. CLEANING AND INSPECTION

PERIODICALLY CLEAN THE LOG SPLITTER TO REMOVE WOOD DEBRIS AND DIRT. INSPECT ALL PARTS FOR WEAR AND TEAR, INCLUDING HOSES AND FITTINGS, TO CATCH POTENTIAL ISSUES EARLY.

## ORDERING REPLACEMENT PARTS

IF YOU FIND THAT A PART NEEDS TO BE REPLACED, KNOWING HOW TO ORDER IT IS CRUCIAL. HERE ARE SOME STEPS:

### 1. USE THE PARTS DIAGRAM

REFER TO THE TROY BILT 27 TON LOG SPLITTER PARTS DIAGRAM TO IDENTIFY THE SPECIFIC PART YOU NEED.

### 2. CHECK THE PART NUMBER

LOCATE THE PART NUMBER IN THE PARTS LIST THAT CORRESPONDS WITH THE DIAGRAM.

### 3. CONTACT RETAILERS OR MANUFACTURERS

YOU CAN ORDER PARTS FROM VARIOUS SOURCES:

- AUTHORIZED TROY BILT DEALERS: FOR OEM PARTS.
- ONLINE RETAILERS: WEBSITES LIKE AMAZON OR SPECIALTY EQUIPMENT SITES.
- LOCAL HARDWARE STORES: MAY CARRY COMMON PARTS.

## CONCLUSION

UNDERSTANDING THE TROY BILT 27 TON LOG SPLITTER PARTS DIAGRAM IS NOT ONLY ESSENTIAL FOR OPERATING THE MACHINE BUT ALSO FOR ITS MAINTENANCE AND REPAIR. FAMILIARIZING YOURSELF WITH THE VARIOUS COMPONENTS, HOW THEY WORK TOGETHER, AND HOW TO INTERPRET THE DIAGRAM CAN SAVE TIME AND MONEY WHILE ENSURING THAT YOUR LOG SPLITTER OPERATES EFFICIENTLY. REGULAR MAINTENANCE WILL EXTEND THE LIFE OF YOUR LOG SPLITTER, MAKING IT A VALUABLE TOOL FOR YEARS TO COME. WHETHER YOU ARE A SEASONED WOODWORKER OR A HOMEOWNER PREPARING FOR WINTER, MASTERING YOUR LOG SPLITTER WILL ENHANCE YOUR WOOD-SPLITTING EXPERIENCE.

## FREQUENTLY ASKED QUESTIONS

### WHAT IS THE PURPOSE OF THE TROY BILT 27 TON LOG SPLITTER PARTS DIAGRAM?

THE PARTS DIAGRAM SERVES AS A VISUAL REFERENCE THAT HELPS USERS IDENTIFY AND LOCATE INDIVIDUAL COMPONENTS OF THE TROY BILT 27 TON LOG SPLITTER, MAKING IT EASIER TO UNDERSTAND ASSEMBLY, MAINTENANCE, AND REPAIRS.

### WHERE CAN I FIND THE PARTS DIAGRAM FOR THE TROY BILT 27 TON LOG SPLITTER?

THE PARTS DIAGRAM CAN TYPICALLY BE FOUND IN THE USER MANUAL THAT COMES WITH THE SPLITTER, ON THE TROY BILT OFFICIAL WEBSITE, OR THROUGH AUTHORIZED DEALER WEBSITES AND REPAIR PARTS RETAILERS.

## WHAT SHOULD I DO IF I NEED TO REPLACE A PART ON MY TROY BILT 27 TON LOG SPLITTER?

REFER TO THE PARTS DIAGRAM TO IDENTIFY THE SPECIFIC PART NEEDED, AND THEN CHECK WITH TROY BILT'S CUSTOMER SERVICE OR AN AUTHORIZED DEALER FOR AVAILABILITY AND PURCHASE OPTIONS.

## HOW OFTEN SHOULD I REFER TO THE PARTS DIAGRAM FOR MY TROY BILT 27 TON LOG SPLITTER?

IT'S A GOOD PRACTICE TO REFER TO THE PARTS DIAGRAM DURING ROUTINE MAINTENANCE, TROUBLESHOOTING ISSUES, OR WHEN ORDERING REPLACEMENT PARTS TO ENSURE YOU HAVE THE CORRECT INFORMATION.

## CAN I USE THE PARTS DIAGRAM TO ASSEMBLE A TROY BILT 27 TON LOG SPLITTER?

YES, THE PARTS DIAGRAM IS HELPFUL FOR ASSEMBLY, AS IT PROVIDES A VISUAL LAYOUT OF ALL COMPONENTS, MAKING IT EASIER TO ENSURE THAT EVERYTHING IS CORRECTLY INSTALLED.

Find other PDF article:

<https://soc.up.edu.ph/12-quote/files?dataid=brm33-1280&title=cbt-bipolar-disorder-worksheet.pdf>

## [Troy Bilt 27 Ton Log Splitter Parts Diagram](#)

### **Troy - Wikipedia**

It is best known as the setting for the Greek myth of the Trojan War. The archaeological site is open to the public as a tourist destination, and was added to the UNESCO World Heritage list ...

### **Troy (2004) - IMDb**

May 14, 2004 · Troy: Directed by Wolfgang Petersen. With Julian Glover, Brian Cox, Nathan Jones, Adoni Maropis. An adaptation of Homer's great epic, the film follows the assault on ...

### *Where Was Troy And What Happened To It? - WorldAtlas*

Oct 13, 2022 · Troy was an ancient Bronze Age city located in modern-day Turkey. It was also the legendary setting for Homer's epic poems, the Iliad and the Odyssey, mentioned in the ...

### **Troy streaming: where to watch movie online? - JustWatch**

Find out how and where to watch "Troy" online on Netflix, Prime Video, and Disney+ today - including 4K and free options.

### [Troy \(film\) - Wikipedia](#)

Troy is a 2004 epic historical action film directed by Wolfgang Petersen and written by David Benioff.

### [Troy \(2004\) - Full cast & crew - IMDb](#)

Troy (2004) - Cast and crew credits, including actors, actresses, directors, writers and more.

### *Trojan War - Wikipedia*

The war was waged by the Achaeans (Greeks) against the city of Troy after Paris of Troy took Helen

from her husband Menelaus, king of Sparta. The war is one of the most important ...

### **Home | Troy Life & Fire Safety Ltd.**

Troy Life & Fire Safety Ltd. is one of the largest suppliers of Fire Alarm, Fire Suppression, Security, Nurse call and Communications Systems in Canada. As an Edwards Authorized ...

### Troy - Prime Video

Based on the epic poem The Iliad by Homer.

### **Troy Apple Premium Partner | Troyestore**

Uzman ekiplerden teknik destek alın Apple ürünleriniz için destek yetkili servis Troy'da! Hemen randevunuzu oluşturup teknik servis hizmeti alın.

### *Troy - Wikipedia*

It is best known as the setting for the Greek myth of the Trojan War. The archaeological site is open to the public as a tourist destination, and was added to the UNESCO World Heritage list ...

### **Troy (2004) - IMDb**

May 14, 2004 · Troy: Directed by Wolfgang Petersen. With Julian Glover, Brian Cox, Nathan Jones, Adoni Maropis. An adaptation of Homer's great epic, the film follows the assault on Troy ...

### Where Was Troy And What Happened To It? - WorldAtlas

Oct 13, 2022 · Troy was an ancient Bronze Age city located in modern-day Turkey. It was also the legendary setting for Homer's epic poems, the Iliad and the Odyssey, mentioned in the ...

### **Troy streaming: where to watch movie online? - JustWatch**

Find out how and where to watch "Troy" online on Netflix, Prime Video, and Disney+ today - including 4K and free options.

### *Troy (film) - Wikipedia*

Troy is a 2004 epic historical action film directed by Wolfgang Petersen and written by David Benioff.

### **Troy (2004) - Full cast & crew - IMDb**

Troy (2004) - Cast and crew credits, including actors, actresses, directors, writers and more.

### *Trojan War - Wikipedia*

The war was waged by the Achaeans (Greeks) against the city of Troy after Paris of Troy took Helen from her husband Menelaus, king of Sparta. The war is one of the most important events ...

### **Home | Troy Life & Fire Safety Ltd.**

Troy Life & Fire Safety Ltd. is one of the largest suppliers of Fire Alarm, Fire Suppression, Security, Nurse call and Communications Systems in Canada. As an Edwards Authorized ...

### **Troy - Prime Video**

Based on the epic poem The Iliad by Homer.

### *Troy Apple Premium Partner | Troyestore*

Uzman ekiplerden teknik destek alın Apple ürünleriniz için destek yetkili servis Troy'da! Hemen randevunuzu oluşturup teknik servis hizmeti alın.

Explore the Troy Bilt 27 ton log splitter parts diagram for easy identification and maintenance. Discover how to keep your splitter running efficiently. Learn more!

[Back to Home](#)