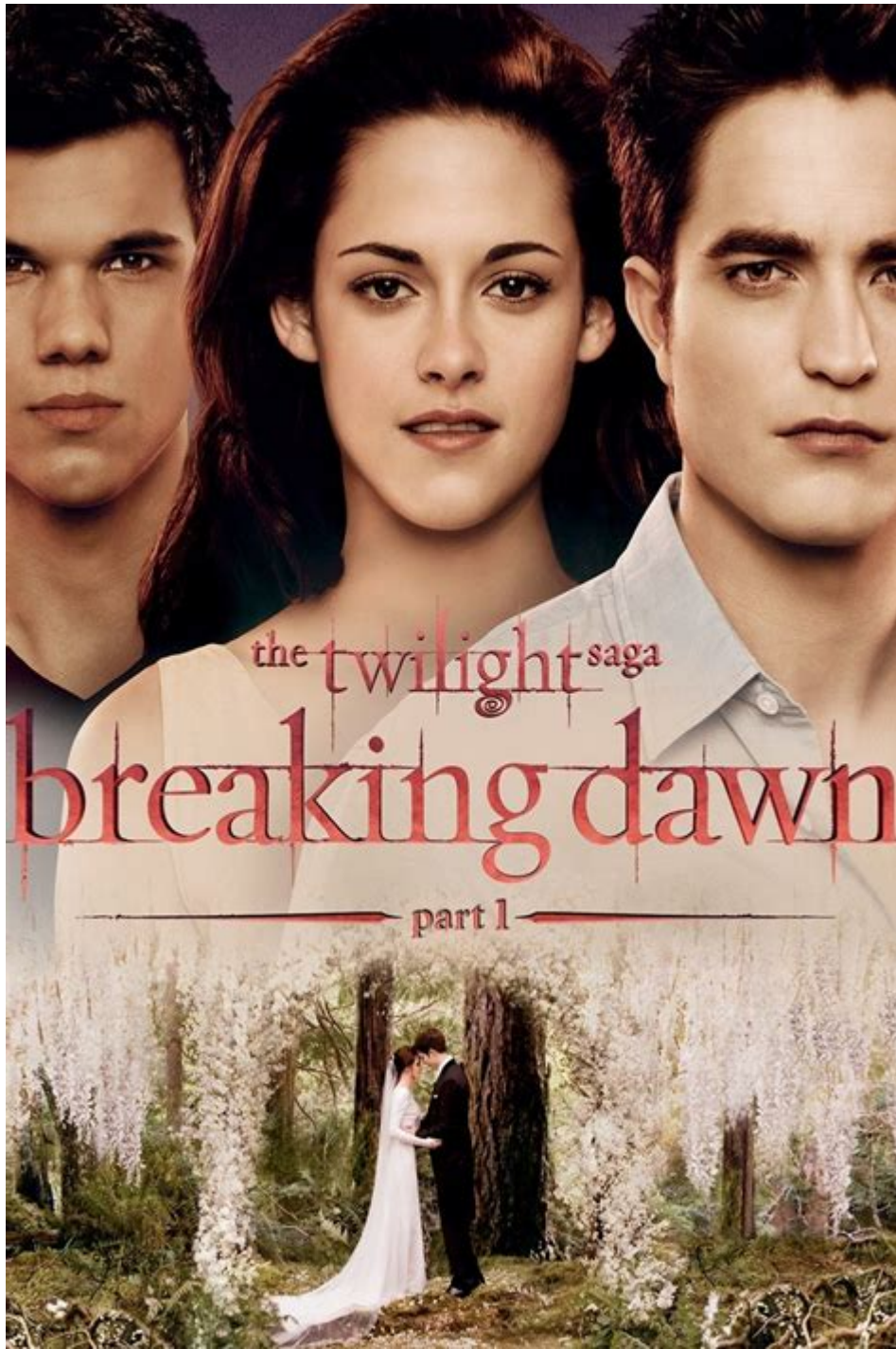


Twilight Saga Breaking Dawn Part 1



Twilight Saga: Breaking Dawn Part 1 is the fourth installment in the Twilight film series, based on the popular novels by Stephenie Meyer. Released on November 18, 2011, this romantic fantasy film directed by Bill Condon is divided into two parts, with Part 1 focusing on the tumultuous events surrounding the marriage of Bella Swan and Edward Cullen. This article delves into the plot, character development, themes, and the impact of the film on both fans and the broader cinematic landscape.

Plot Summary

The narrative of *Breaking Dawn Part 1* picks up where the previous film, *Eclipse*, left off. Bella Swan (Kristen Stewart) and Edward Cullen (Robert Pattinson) are preparing for their wedding, which is met with mixed emotions from friends and family. The film explores the complexities of their relationship, the challenges they face, and the consequences of their choices.

Wedding and Honeymoon

The film opens with the highly anticipated wedding between Bella and Edward. The ceremony is a beautiful affair, attended by family and friends, including Jacob Black (Taylor Lautner), who struggles with his feelings for Bella. After their vows, the couple embarks on a honeymoon to a private island called Isle Esme, where they experience both passionate romance and unexpected challenges.

During their honeymoon, Bella discovers that she is pregnant, a shocking revelation that sets off a chain of events that tests the limits of her love for Edward and her desire to maintain her humanity.

The Pregnancy

Bella's pregnancy progresses rapidly, leading to severe physical and emotional distress. The Cullens, including Carlisle (Peter Facinelli), Esme (Elizabeth Reaser), and Rosalie (Nikki Reed), rally to support Bella during this tumultuous time. However, the pregnancy poses a significant threat to her life, as the hybrid child grows at an alarming rate.

The tension escalates as Jacob, who has imprinted on Bella's unborn child, is torn between his protective instincts and his resentment towards Edward. This dynamic adds depth to the story, showcasing the internal and external conflicts that arise from love, loyalty, and sacrifice.

Character Development

Breaking Dawn Part 1 highlights significant character arcs, particularly for Bella, Edward, and Jacob. The film emphasizes their emotional struggles and the choices they must make in the face of danger.

Bella Swan

Bella's transformation from a high school girl to a woman on the brink of motherhood is a central theme of the film. Her journey reflects the complexities of love, sacrifice, and the desire for autonomy. As she grapples with the implications of becoming a mother, Bella's character evolves from a passive role to one of agency and determination.

The film showcases her unwavering commitment to her love for Edward and her unborn child, even at the expense of her own well-being. This evolution resonates with audiences, as it encapsulates the struggles many women face regarding motherhood, identity, and personal sacrifice.

Edward Cullen

Edward's character is deeply impacted by Bella's pregnancy. His protective instincts come to the forefront, highlighting his internal conflict between his desire to keep Bella safe and his love for the child growing inside her. The film delves into Edward's fears and insecurities, showcasing the more vulnerable side of the typically stoic vampire.

His relationship with Bella is tested as he faces the potential loss of both her and their child. This struggle adds complexity to his character, making him more relatable and human, despite his vampiric nature.

Jacob Black

Jacob's character arc takes a significant turn in *Breaking Dawn Part 1*. His feelings for Bella complicate his loyalty to her as he grapples with the reality of her marriage to Edward and the pregnancy. As he imprints on Bella's child, Renesmee, Jacob's character takes on a protective role, further blurring the lines between friendship, love, and rivalry.

This new dynamic not only adds tension to the narrative but also highlights themes of destiny and the interconnectedness of the characters' lives. Jacob's struggles reflect the broader themes of loyalty and sacrifice, making him a crucial part of the story.

Thematic Elements

Breaking Dawn Part 1 explores several themes, including love, sacrifice, and the complexities of family dynamics.

Love and Sacrifice

At its core, the film is a love story that delves into the sacrifices that come with deep emotional connections. Bella's willingness to risk her life for her child, Edward's efforts to protect Bella, and Jacob's struggle to accept the changes in his relationship with Bella all highlight the various expressions of love.

The film portrays love as a powerful force that can drive individuals to make difficult choices, often pitting personal desires against the well-being of loved ones.

Family and Belonging

Family dynamics play a crucial role in *Breaking Dawn Part 1*. The Cullens exhibit a strong sense of loyalty and support, emphasizing the importance of family in times of crisis. Bella's integration into the Cullen family reflects the theme of belonging and the lengths one will go to protect those they love.

The film also explores the idea of unconventional family structures, particularly through the relationship between the Quileute tribe and the Cullens. The interactions between these two groups highlight themes of unity, conflict, and the search for common ground amidst differences.

Impact and Reception

Breaking Dawn Part 1 received mixed reviews from critics but was generally well-received by fans of the series. The film's visual effects, particularly those depicting the supernatural elements, garnered praise. The cinematography, combined with the haunting score by Carter Burwell, effectively created an emotional atmosphere that resonated with viewers.

Box Office Success

The film was a box office success, grossing over \$712 million worldwide. Its strong performance underscored the enduring popularity of the *Twilight Saga* and solidified its place in contemporary pop culture. The film's success also set the stage for the release of *Breaking Dawn Part 2* in 2012, concluding the saga.

Legacy of the Twilight Saga

The *Twilight Saga* has left a lasting impact on the romantic fantasy genre, influencing a generation of filmmakers and writers. *Breaking Dawn Part 1*, with its focus on love, sacrifice, and complex relationships, encapsulates the essence of the series. The film continues to be a subject of discussion among fans and critics alike, reflecting the cultural significance of the *Twilight* phenomenon.

Conclusion

In summary, ***Twilight Saga: Breaking Dawn Part 1*** is a pivotal entry in the series that explores the complexities of love, sacrifice, and family dynamics. Through its rich character development and thematic depth, the film resonates with audiences, making it a memorable chapter in the *Twilight* story. As fans eagerly awaited the conclusion of Bella and Edward's journey, *Breaking Dawn Part 1* successfully set the stage for the emotional finale, leaving a lasting legacy in the realm of romantic fantasy cinema.

Frequently Asked Questions

What is the main plot of 'Twilight Saga: Breaking Dawn Part 1'?

The film focuses on Bella and Edward's wedding, their honeymoon, and the unexpected consequences of Bella's pregnancy with a half-human, half-vampire child.

How does Bella's transformation into a vampire occur in this part of the saga?

Bella does not transform into a vampire in Part 1; her transformation takes place in Part 2 after she gives birth.

What challenges does Bella face during her pregnancy?

Bella faces severe physical and emotional challenges, including rapid weight gain, severe pain, and the danger that her half-vampire child poses to her health.

Who are the main antagonists introduced in 'Breaking Dawn Part 1'?

While there are no direct antagonists in Part 1, the looming threat of the Volturi becomes significant as they are concerned about the existence of Renesmee, Bella and Edward's child.

What is the significance of Renesmee in the story?

Renesmee is a unique child, being half-human and half-vampire, which raises concerns among the vampire community and becomes a central focus of the narrative.

How does the film portray the relationship between Bella and Edward?

Bella and Edward's relationship is portrayed as deeply romantic and passionate, showcasing their commitment to each other through their wedding and the challenges of impending parenthood.

What role does Jacob play in 'Breaking Dawn Part 1'?

Jacob plays a pivotal role as he becomes protective of Bella and develops a bond with Renesmee, leading to significant tension between him and Edward.

What is the tone of 'Breaking Dawn Part 1' compared to previous films in the saga?

The tone of Part 1 is darker and more dramatic, focusing on themes of love, sacrifice, and the complexities of family dynamics amidst supernatural elements.

How does 'Breaking Dawn Part 1' end?

The film ends with Bella giving birth to Renesmee, leading to a critical moment where her life is in danger, setting the stage for the events of Part 2.

What are some notable scenes in 'Breaking Dawn Part 1'?

Notable scenes include Bella and Edward's wedding, their romantic honeymoon in Brazil, and the intense birth sequence that highlights Bella's struggle and the arrival of Renesmee.

Find other PDF article:

<https://soc.up.edu.ph/02-word/files?ID=kJn29-8772&title=7-traits-of-writing.pdf>

Twilight Saga Breaking Dawn Part 1

Twilight -

Nov 21, 2008 · Kristen Stewart ...

The Twilight Saga: Breaking Dawn - Part 1

Nov 18, 2011 · Kristen Stewart ...

The Twilight Saga: Breaking Dawn - Part 2

Nov 16, 2012 · Kristen Stewart Robert Pattinson ...

()

Sep 19, 2024 · Twilight of the Gods (2024) ...

() ()

The Twilight Zone ...

()

Jun 22, 2011 · Angelina Nikonova Olga Dihovichnaya / Sergei Borisov / Sergeu Goludov ...

The Twilight Zone -

Sep 18, 2002 · 1983 ...

()

May 1, 2024 · ...

第2部 The Twilight Saga: New Moon

Nov 20, 2009 · The Twilight Saga: New Moon + 少年 + Teenage Love + 少年 = 少年 Twilight ...

第3部 (少年) - 少年

Jun 30, 2010 · Kristen Stewart Robert Pattinson ...

少年 Twilight - 少年

Nov 21, 2008 · Kristen Stewart ...

第4部 (少年) The Twilight Saga: Breaking Dawn - Part 1

Nov 18, 2011 · Kristen Stewart ...

第4部 (少年) The Twilight Saga: Breaking Dawn - Part 2

Nov 16, 2012 · Kristen Stewart Robert Pattinson ...

少年 (少年)

Sep 19, 2024 · Twilight of the Gods (2024) 少年: 少年 / 少年 / 少年 / 少年 / 少年 少年: 少年 / 少年 / 少年 少年: 少年 / 少年 / 少年 / 少年 / 少年 / 少年 ...

少年 (少年) 少年 (少年)

The Twilight Zone 少年 ...

少年 (少年)

Jun 22, 2011 · 少年: Angelina Nikonova 少年: Olga Dihovichnaya / Sergei Borisov / Sergeu Goludov 少年: 少年 / 少年 少年: 少年 少年: 2011-06-22 少年: 105 少年: 少年 / 少年 (少年) / Portret v sumerkakh / Twilight Portrait IMDb: tt2043962

少年 The Twilight Zone - 少年

Sep 18, 2002 · 1983 ...

少年 (少年)

May 1, 2024 · “少年” ...

第2部 The Twilight Saga: New Moon

Nov 20, 2009 · The Twilight Saga: New Moon + 少年 + Teenage Love + 少年 = 少年 Twilight ...

第3部 (少年) - 少年

Jun 30, 2010 · Kristen Stewart Robert Pattinson ...

Dive into the captivating world of the Twilight Saga Breaking Dawn Part 1. Explore key themes

[Back to Home](#)