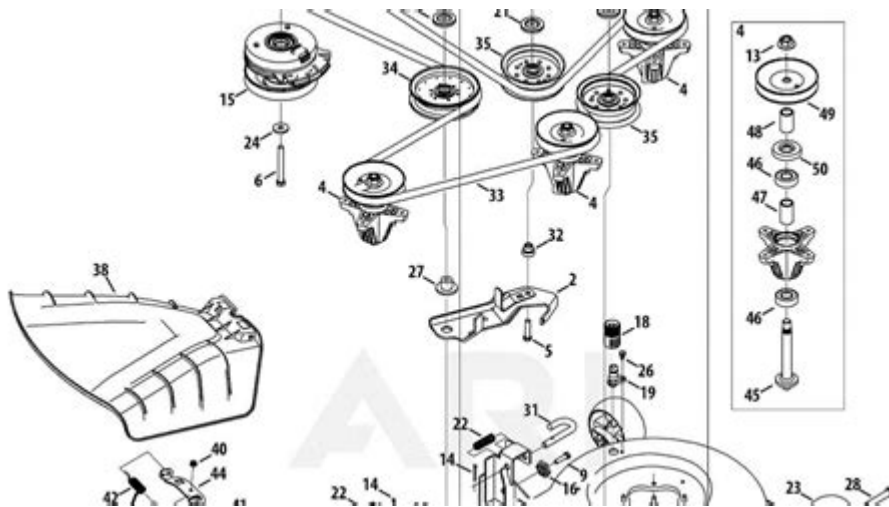


# Troy Bilt Tb30r Parts Diagram



Troy Bilt TB30R Parts Diagram is a crucial resource for anyone who owns or maintains this popular riding lawn mower. Understanding the parts and their functions is essential for effective maintenance and repairs. The TB30R is known for its reliability and ease of use, making it a favorite among homeowners with medium to large lawns. This article will delve into the various components of the Troy Bilt TB30R lawn mower, discussing their roles, common issues, and maintenance tips, all while referring to the parts diagram as a helpful guide.

## Overview of the Troy Bilt TB30R

The Troy Bilt TB30R is a riding lawn mower designed for residential use. It features a compact design, making it suitable for navigating tight spaces. Its key specifications include:

- Engine: 382cc OHV engine
- Cutting Width: 30 inches
- Transmission: Automatic
- Fuel Capacity: 1.3 gallons

The TB30R is equipped with a range of features that enhance its functionality, including a side discharge, mulching capabilities, and an adjustable cutting height. However, like any machine, it requires regular maintenance and occasional repairs, which is where understanding the parts diagram becomes invaluable.

## Understanding the Parts Diagram

The Troy Bilt TB30R parts diagram visually represents the various components of the mower. It can help users identify parts for maintenance or replacement. The diagram typically includes the following sections:

## **1. Engine Components**

The engine is the heart of the TB30R. Key parts include:

- Air Filter: Ensures clean air intake for optimal engine performance.
- Spark Plug: Ignites the fuel-air mixture for combustion.
- Fuel Tank: Holds the gasoline required for operation.
- Carburetor: Mixes fuel with air for efficient combustion.

## **2. Cutting Deck Assembly**

The cutting deck is responsible for the mower's cutting capabilities. Key components include:

- Blades: Sharp metal pieces that cut the grass.
- Deck Housing: The shell that houses the cutting blades.
- Spindle Assembly: Connects the blades to the deck and allows them to rotate.
- Deck Lift Lever: Adjusts the cutting height.

## **3. Transmission and Drive System**

The transmission allows the mower to move forward and backward easily. Important parts include:

- Drive Belt: Transmits power from the engine to the transmission.
- Clutch: Engages and disengages the drive belt.
- Axles: Connect the wheels to the mower and allow for movement.

## **4. Steering and Control**

Steering and control components are crucial for maneuvering the mower effectively. They include:

- Steering Wheel: Used to guide the mower.
- Throttle Control: Regulates the engine speed.
- Brake Pedal: Engages the braking system for stopping.

# Common Issues and Troubleshooting

Understanding the parts diagram can help diagnose common issues with the TB30R. Here are some frequent problems and their solutions:

## 1. Engine Won't Start

Possible causes include:

- Empty Fuel Tank: Ensure there is enough gasoline.
- Clogged Air Filter: Check and replace if necessary.
- Faulty Spark Plug: Inspect and replace if damaged.

## 2. Uneven Cutting

If the mower is not cutting evenly, consider:

- Dull Blades: Sharpen or replace the blades.
- Incorrect Deck Height: Adjust the deck lift lever.
- Worn Spindle Bearings: Inspect and replace if necessary.

## 3. Mower Stalling

Stalling can occur due to:

- Fuel Blockage: Check the fuel lines for clogs.
- Overheating: Ensure the engine is adequately cooled and the air filter is clean.
- Drive Belt Issues: Inspect the drive belt for wear or damage.

## Maintenance Tips

Proper maintenance of the Troy Bilt TB30R will prolong its life and enhance performance. Here are some essential maintenance tips:

### 1. Regular Oil Changes

Changing the oil regularly is vital for engine health. Follow these steps:

- Check the oil level using the dipstick.

- Drain the old oil and replace it with fresh oil according to the manufacturer's specifications.
- Change the oil filter if applicable.

## **2. Blade Maintenance**

The cutting blades require regular attention:

- Sharpen the blades at least once a season.
- Check for nicks or damage and replace them if needed.
- Clean the underside of the deck to prevent grass buildup.

## **3. Air Filter and Spark Plug Replacement**

To ensure optimal performance:

- Replace the air filter annually or more frequently if you mow in dusty conditions.
- Inspect and replace the spark plug as needed, typically every season.

## **Where to Find Replacement Parts**

When it comes to replacing parts on your Troy Bilt TB30R, there are several options available:

- Authorized Dealers: Purchase parts directly from Troy Bilt authorized dealers to ensure compatibility and quality.
- Online Retailers: Websites like Amazon, eBay, and specialized lawn mower parts retailers offer a wide selection of parts.
- Local Hardware Stores: Many local hardware stores carry common parts for lawn mowers.

## **Conclusion**

The Troy Bilt TB30R parts diagram is an invaluable tool for anyone looking to maintain or repair this riding lawn mower. By understanding the various components, users can troubleshoot common issues, perform necessary maintenance, and ensure their mower operates efficiently. Regular upkeep, including oil changes, blade maintenance, and part replacements, will keep the TB30R running smoothly for years to come. Whether you are a seasoned DIYer or a novice, having a clear understanding of your mower's parts will empower you to tackle any repair or maintenance task with confidence.

# Frequently Asked Questions

## **What is the purpose of the Troy-Bilt TB30R parts diagram?**

The parts diagram provides a visual representation of all components in the Troy-Bilt TB30R, helping users understand assembly, maintenance, and repairs.

## **Where can I find the parts diagram for the Troy-Bilt TB30R?**

The parts diagram can typically be found on the official Troy-Bilt website, in the owner's manual, or through authorized dealers and parts suppliers.

## **What should I do if I can't read the parts diagram for the TB30R?**

If you have difficulty reading the parts diagram, consider contacting Troy-Bilt customer support or a local dealer for assistance or clarification.

## **Are all parts of the Troy-Bilt TB30R available for purchase?**

Most parts for the Troy-Bilt TB30R are available for purchase through Troy-Bilt's official website, authorized dealers, or parts retailers.

## **How can I use the parts diagram to troubleshoot issues with my TB30R?**

By referencing the parts diagram, you can identify specific components related to your issue, which can help you isolate the problem and determine necessary repairs.

## **What are common parts that may need replacement on the Troy-Bilt TB30R?**

Common parts that may need replacement include the air filter, spark plug, belts, blades, and battery, all of which can be identified on the parts diagram.

## **Is the parts diagram for the Troy-Bilt TB30R standardized across models?**

While the parts diagram may have similarities across models, each model, including the TB30R, has a unique diagram tailored to its specific components.

## Can I download the parts diagram for the TB30R?

Yes, the parts diagram can often be downloaded from the Troy-Bilt website or obtained as a PDF from customer support.

## What tools do I need to replace parts on the Troy-Bilt TB30R?

Tools typically required include wrenches, screwdrivers, pliers, and possibly a socket set, depending on the part being replaced as indicated in the parts diagram.

## Is there a video tutorial available for using the TB30R parts diagram?

Many users create video tutorials available on platforms like YouTube that demonstrate how to use the parts diagram for assembly and repairs on the TB30R.

Find other PDF article:

<https://soc.up.edu.ph/29-scan/pdf?dataid=DBt97-0077&title=how-long-does-alcohol-take-to-leave-your-system.pdf>

## Troy Bilt Tb30r Parts Diagram

### **Troy - Wikipedia**

It is best known as the setting for the Greek myth of the Trojan War. The archaeological site is open to the public as a tourist destination, and was added to the UNESCO World Heritage list ...

### Troy (2004) - IMDb

May 14, 2004 · Troy: Directed by Wolfgang Petersen. With Julian Glover, Brian Cox, Nathan Jones, Adoni Maropis. An adaptation of Homer's great epic, the film follows the assault on ...

### **Where Was Troy And What Happened To It? - WorldAtlas**

Oct 13, 2022 · Troy was an ancient Bronze Age city located in modern-day Turkey. It was also the legendary setting for Homer's epic poems, the Iliad and the Odyssey, mentioned in the ...

### Troy streaming: where to watch movie online? - JustWatch

Find out how and where to watch "Troy" online on Netflix, Prime Video, and Disney+ today - including 4K and free options.

### **Troy (film) - Wikipedia**

Troy is a 2004 epic historical action film directed by Wolfgang Petersen and written by David Benioff.

*Troy (2004) - Full cast & crew - IMDb*

Troy (2004) - Cast and crew credits, including actors, actresses, directors, writers and more.

### **Trojan War - Wikipedia**

The war was waged by the Achaeans (Greeks) against the city of Troy after Paris of Troy took Helen from her husband Menelaus, king of Sparta. The war is one of the most important ...

### **Home | Troy Life & Fire Safety Ltd.**

Troy Life & Fire Safety Ltd. is one of the largest suppliers of Fire Alarm, Fire Suppression, Security, Nurse call and Communications Systems in Canada. As an Edwards Authorized ...

*Troy - Prime Video*

Based on the epic poem The Iliad by Homer.

### Troy Apple Premium Partner | Troyestore

Uzman ekiplerden teknik destek alın Apple ürünleriniz için destek yetkili servis Troy'da! Hemen randevunuzu oluşturup teknik servis hizmeti alın.

### **Troy - Wikipedia**

It is best known as the setting for the Greek myth of the Trojan War. The archaeological site is open to the public as a tourist ...

Troy (2004) - IMDb

May 14, 2004 · Troy: Directed by Wolfgang Petersen. With Julian Glover, Brian Cox, Nathan Jones, Adoni Maropis. An ...

*Where Was Troy And What Happened To It? - WorldAtlas*

Oct 13, 2022 · Troy was an ancient Bronze Age city located in modern-day Turkey. It was also the legendary setting for Homer's ...

### **Troy streaming: where to watch movie online? - JustWatch**

Find out how and where to watch "Troy" online on Netflix, Prime Video, and Disney+ today - including 4K and free options.

*Troy (film) - Wikipedia*

Troy is a 2004 epic historical action film directed by Wolfgang Petersen and written by David Benioff.

Explore the comprehensive Troy Bilt TB30R parts diagram to easily identify and order replacement parts. Learn more to keep your lawn mower running smoothly!

[Back to Home](#)