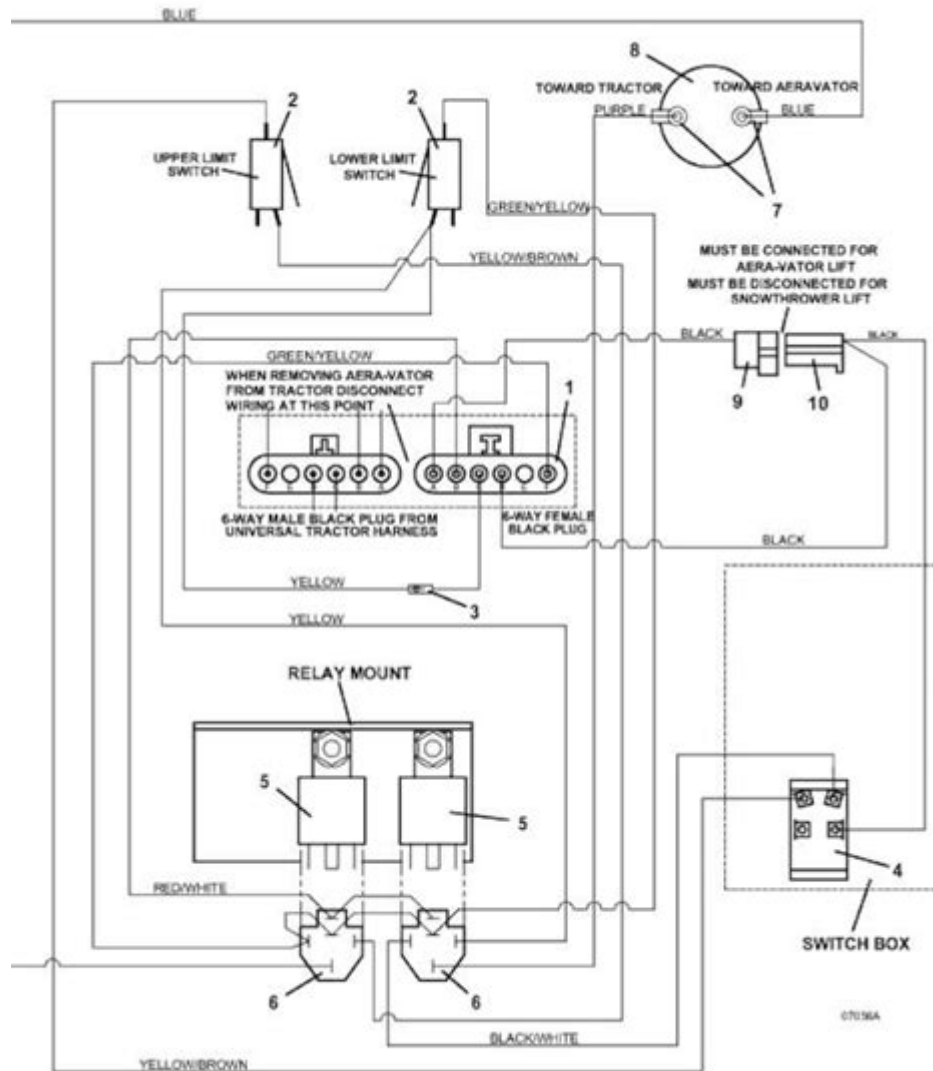


# Tranquil Ease Lift Chair Remote Wiring Diagram



**Tranquil ease lift chair remote wiring diagram** is essential for understanding how to connect and troubleshoot the electrical components of lift chairs. These chairs are designed to assist individuals with mobility challenges by providing a smooth, controlled lift and recline function. A proper understanding of the wiring diagram allows users to maintain their chairs effectively, ensuring optimal performance and safety. This article will provide a comprehensive overview of the Tranquil Ease lift chair remote wiring diagram, including its components, common issues, and troubleshooting tips.

## Understanding Lift Chair Components

Before diving into the wiring diagram, it is crucial to understand the main components of a lift chair

and their functions. The primary parts include:

## **1. Remote Control**

- The remote is the user interface that allows the individual to operate the lift chair. It typically features buttons for reclining, lifting, and sometimes additional features like heat or massage.

## **2. Actuator Motors**

- These motors are responsible for the lift and recline functions of the chair. They convert electrical energy into mechanical movement.

## **3. Power Supply**

- The power supply provides the necessary voltage to the chair's actuator motors and control system. It is usually connected to a standard electrical outlet.

## **4. Wiring Harness**

- The wiring harness connects all components, transmitting power and signals between the remote control, actuator motors, and power supply.

# **The Wiring Diagram Explained**

The wiring diagram for a Tranquil Ease lift chair is a visual representation of how all electrical components are interconnected. It typically includes the following elements:

## **1. Remote Control Wiring**

- The remote control connects to the wiring harness through specific color-coded wires. The most common colors are:

- Red: Power
- Black: Ground
- Green: Recline down
- Blue: Recline up
- Yellow: Lift up
- White: Lift down

## **2. Actuator Motor Connections**

- Each actuator motor will have two connections for power. The wiring diagram will indicate which wires connect to each motor for both lift and recline functions.

### **3. Power Supply Connections**

- The power supply is typically connected to the remote control and the motors. The wiring diagram will show how the power flows from the outlet to the various components.

### **4. Ground Connections**

- Grounding is crucial for safety. The wiring diagram will highlight which wires should connect to the ground to prevent electrical hazards.

## **Common Wiring Issues**

Understanding the common wiring issues can help users troubleshoot problems more efficiently. Here are some frequent issues that may arise:

### **1. Remote Control Malfunction**

- If the remote control is not functioning properly, check the following:
- Ensure the batteries are installed correctly and are fully charged.
- Inspect the wiring harness for loose or damaged connections.
- Confirm that the remote is receiving a signal from the chair's control box.

### **2. Actuator Motor Failure**

- If the actuator motors do not respond, consider these potential causes:
- Inspect the power supply to ensure it is functioning properly.
- Check for any damaged wires leading to the motors.
- Test each motor individually to determine if one has failed.

### **3. Power Supply Issues**

- If the chair is unresponsive, the power supply might be the culprit:
- Ensure the power cord is securely plugged into an outlet.
- Check for any blown fuses or tripped circuit breakers.
- Test the outlet with another device to confirm it is working.

## **Step-by-Step Wiring Guide**

If you need to wire or rewire your Tranquil Ease lift chair, follow these steps carefully:

## **1. Gather Necessary Tools**

- Wire strippers
- Screwdrivers (flathead and Phillips)
- Electrical tape
- Multimeter (for testing connections)
- Replacement wires (if necessary)

## **2. Disconnect Power**

- Always unplug the lift chair from the electrical outlet before beginning any wiring work.

## **3. Inspect Existing Wiring**

- Check all visible wires for any signs of damage or wear. Replace any damaged wires before proceeding.

## **4. Connect the Remote Control**

- Using the wiring diagram as a guide, connect the remote control wires to the corresponding wires in the wiring harness. Ensure all connections are secure.

## **5. Connect the Actuator Motors**

- Connect the wires from the actuator motors to the wiring harness according to the wiring diagram. Ensure the lift and recline motors are correctly wired to their respective controls.

## **6. Connect the Power Supply**

- Attach the power supply wires to the wiring harness, ensuring the power and ground connections are secure.

## **7. Test the Connections**

- Before reassembling the chair, plug it back in and test all functions using the remote control. Check if the lift and recline functions operate smoothly.

## **8. Secure and Reassemble**

- Once confirmed that everything is functioning correctly, secure all connections with electrical tape and reassemble any parts of the chair you may have removed during the process.

# Safety Precautions

When working with electrical components, it is crucial to prioritize safety. Follow these precautions:

- Always unplug the chair before performing any wiring work.
- Use insulated tools to prevent electric shock.
- Avoid working in wet conditions to reduce the risk of electrical hazards.
- If you are unsure about any aspect of the wiring process, consult a professional technician.

## Conclusion

Understanding the Tranquil Ease lift chair remote wiring diagram is vital for users who want to maintain and troubleshoot their lift chairs effectively. By familiarizing yourself with the components, common issues, and following a systematic wiring process, you can ensure your lift chair operates safely and efficiently. Remember to prioritize safety and consult a professional if you encounter complexities beyond your expertise. With the right knowledge and precautions, you can enjoy the comfort and independence that your lift chair provides for years to come.

## Frequently Asked Questions

### **What is a tranquil ease lift chair remote wiring diagram?**

A tranquil ease lift chair remote wiring diagram is a schematic representation that shows how the remote control is connected to the lift chair's electrical components, ensuring proper functionality.

### **Where can I find a tranquil ease lift chair remote wiring diagram?**

You can typically find the wiring diagram in the user manual that comes with the lift chair, or you may download it from the manufacturer's website or contact their customer support.

### **What tools do I need to troubleshoot a tranquil ease lift chair remote wiring?**

To troubleshoot, you will need basic tools such as a multimeter, screwdriver, wire strippers, and possibly a soldering iron if repairs are needed.

### **What should I do if my tranquil ease lift chair remote is not working?**

First, check the batteries in the remote, ensure all connections are secure per the wiring diagram, and inspect the wiring for any damage. If issues persist, consult the manufacturer or a technician.

## How can I safely modify a tranquil ease lift chair remote wiring?

To safely modify wiring, always unplug the chair from the power source, refer to the wiring diagram for guidance, and ensure any modifications comply with safety standards.

## What are common issues with tranquil ease lift chair remote wiring?

Common issues include frayed wires, loose connections, and faulty remotes. These can typically be diagnosed using the wiring diagram and basic electrical troubleshooting techniques.

## Can I replace the remote for my tranquil ease lift chair, and how does it affect the wiring?

Yes, you can replace the remote, but ensure the new remote is compatible with your chair model. Refer to the wiring diagram to correctly connect the new remote.

Find other PDF article:

<https://soc.up.edu.ph/16-news/files?docid=DQN93-7444&title=danbury-mint-value-guide.pdf>

## Tranquil Ease Lift Chair Remote Wiring Diagram

FR: tranquil / tranquille - masculin | WordReference Forums

Feb 14, 2013 · C'est vrai que 'c'est tranquil' serait correcte? Je préfère passer mes vacances dans les montagnes parce que c'est tranquille et on y est près de la nature.

tranquill - tranquille

tranquill quiet still tranquil serene tranquille tranquille ...

Ils se tiennent tranquille (s) - accord | WordReference Forums

Sep 14, 2020 · Chers amis, j'ai un doute sur l'accord à faire pour ils se tiennent tranquille(s). Pouvez-vous me confirmer qu'il faut bien accorder tranquilles au pluriel (comme dans ils ...

**tranquility** tranquillity

Sep 25, 2010 · tranquillity tranquillity..tranquil [adj.] 1. quiet; calm; peaceful ...  
<tranquility> -ity tranquillity [n.]

ser/estar tranquilo - WordReference Forums

Jan 29, 2015 · Can tranquilo be used with both ser and estar? Una persona tranquila. (a person that is generally calm) Estoy tranquilo. (I'm currently calm)

tranquille / calme | WordReference Forums

Aug 23, 2012 · Bonjour! est-ce que "tranquille" et "calme" sont des synonymes absolus ou

## FR: laissez-les tranquille (s) | WordReference Forums

Oct 14, 2006 · Laissez les autres tranquille ou tranquilles? C'est bien pluriel, tranquille, dans cette phrase.... non? J'ai un doute..

*tranquilamente/tranquila* | *WordReference Forums*

Dec 2, 2007 · The adjective can be place after a verb as a adv,right? For example: Los troyanos se lanzaron fuera de la ciudad,gritando llenos (adj) de alegría. So can I use adjective the ...

Discover how to wire your Tranquil Ease lift chair remote with our detailed wiring diagram. Ensure smooth functionality and comfort—learn more today!

[Back to Home](#)