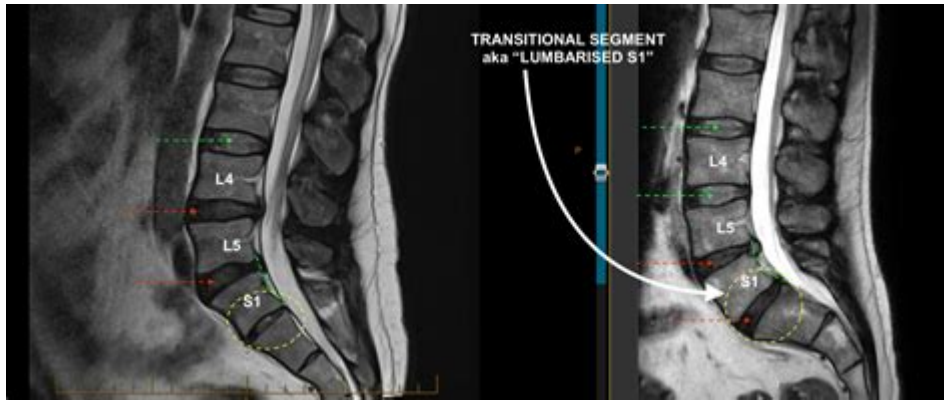


Transitional Lumbosacral Anatomy With Lumbarization Of S1



UNDERSTANDING TRANSITIONAL LUMBOSACRAL ANATOMY WITH LUMBARIZATION OF S1

THE TERM **TRANSITIONAL LUMBOSACRAL ANATOMY WITH LUMBARIZATION OF S1** REFERS TO A VARIATION IN THE ANATOMICAL STRUCTURE AT THE JUNCTION BETWEEN THE LUMBAR SPINE AND THE SACRUM. THIS CONDITION CAN SIGNIFICANTLY AFFECT SPINAL BIOMECHANICS, LEADING TO VARIOUS CLINICAL IMPLICATIONS. IN THIS ARTICLE, WE WILL EXPLORE THE ANATOMY OF THE LUMBOSACRAL JUNCTION, DEFINE LUMBARIZATION, DISCUSS ITS CAUSES, SYMPTOMS, AND POTENTIAL TREATMENT OPTIONS, WHILE ILLUSTRATING THE IMPORTANCE OF UNDERSTANDING THIS CONDITION IN CLINICAL PRACTICE.

OVERVIEW OF THE LUMBOSACRAL ANATOMY

THE LUMBOSACRAL REGION IS A CRITICAL AREA OF THE SPINE, CONSISTING OF THE LAST LUMBAR VERTEBRA (L5) AND THE SACRAL VERTEBRAE (S1-S5). THIS REGION PLAYS A VITAL ROLE IN WEIGHT-BEARING, MOBILITY, AND THE OVERALL STABILITY OF THE SPINE.

ANATOMICAL FEATURES

1. LUMBAR VERTEBRAE (L1-L5):

- THE LUMBAR VERTEBRAE ARE CHARACTERIZED BY THEIR LARGER SIZE COMPARED TO THORACIC AND CERVICAL VERTEBRAE, DESIGNED TO BEAR THE WEIGHT OF THE UPPER BODY.
- EACH LUMBAR VERTEBRA HAS A LARGE VERTEBRAL BODY, A THICK SPINOUS PROCESS, AND TRANSVERSE PROCESSES THAT PROVIDE ATTACHMENT POINTS FOR MUSCLES AND LIGAMENTS.

2. SACRUM (S1-S5):

- THE SACRUM CONSISTS OF FIVE FUSED VERTEBRAE, FORMING A TRIANGULAR STRUCTURE THAT CONNECTS THE SPINE TO THE PELVIS.
- THE SACRUM PROVIDES STABILITY AND STRENGTH TO THE PELVIC GIRDLE AND SERVES AS A CONDUIT FOR THE NERVOUS SYSTEM VIA THE SACRAL FORAMINA.

3. LUMBOSACRAL JOINT:

- THE LUMBOSACRAL JOINT IS FORMED BETWEEN THE L5 VERTEBRA AND THE S1 SEGMENT OF THE SACRUM. THIS JOINT IS

CRUCIAL FOR THE TRANSFER OF WEIGHT AND FORCES BETWEEN THE UPPER BODY AND THE LOWER LIMBS.

WHAT IS LUMBARIZATION OF S1?

LUMBARIZATION OF S1 IS A CONGENITAL ANOMALY WHERE THE FIRST SACRAL VERTEBRA (S1) DEVELOPS CHARACTERISTICS OF A LUMBAR VERTEBRA, RESULTING IN THE PRESENCE OF SIX LUMBAR VERTEBRAE INSTEAD OF THE TYPICAL FIVE. THIS ANOMALY CAN AFFECT THE LUMBOSACRAL JUNCTION'S MORPHOLOGY AND FUNCTION.

CHARACTERISTICS OF LUMBARIZATION

- VERTEBRAL MORPHOLOGY: IN LUMBARIZATION, S1 MAY PRESENT WITH A LARGER VERTEBRAL BODY, SIMILAR TO L5, AND MAY HAVE A MORE PRONOUNCED TRANSVERSE PROCESS.
- FACETS: THE FACET JOINTS OF S1 MAY RESEMBLE THOSE OF LUMBAR VERTEBRAE, CONTRIBUTING TO ALTERED MOTION AT THE LUMBOSACRAL JUNCTION.
- DEVELOPMENTAL VARIABILITY: LUMBARIZATION MAY VARY IN ITS DEGREE, WITH SOME INDIVIDUALS EXHIBITING COMPLETE LUMBARIZATION WHILE OTHERS SHOW PARTIAL CHARACTERISTICS.

INCIDENCE AND PREVALENCE

LUMBARIZATION OCCURS IN A SMALL PERCENTAGE OF THE POPULATION, WITH ESTIMATES RANGING FROM 5% TO 25% OF INDIVIDUALS. IT IS OFTEN IDENTIFIED INCIDENTALLY DURING IMAGING STUDIES PERFORMED FOR OTHER REASONS.

CAUSES OF LUMBARIZATION

THE EXACT CAUSE OF LUMBARIZATION REMAINS UNCLEAR, BUT SEVERAL FACTORS MAY CONTRIBUTE TO ITS DEVELOPMENT:

1. GENETIC FACTORS: SOME STUDIES SUGGEST A HEREDITARY COMPONENT IN THE DEVELOPMENT OF TRANSITIONAL VERTEBRAE.
2. DEVELOPMENTAL ANOMALIES: ABNORMALITIES DURING THE EMBRYOLOGICAL DEVELOPMENT OF THE SPINE MAY LEAD TO VARIATIONS IN THE NUMBER AND MORPHOLOGY OF VERTEBRAE.
3. ENVIRONMENTAL INFLUENCES: WHILE LESS UNDERSTOOD, CERTAIN ENVIRONMENTAL FACTORS DURING PREGNANCY MAY INFLUENCE SPINAL DEVELOPMENT.

CLINICAL IMPLICATIONS OF TRANSITIONAL LUMBOSACRAL ANATOMY

UNDERSTANDING TRANSITIONAL LUMBOSACRAL ANATOMY, PARTICULARLY LUMBARIZATION OF S1, IS VITAL FOR SEVERAL REASONS:

SYMPTOMS ASSOCIATED WITH LUMBARIZATION

INDIVIDUALS WITH LUMBARIZATION MAY EXPERIENCE A RANGE OF SYMPTOMS, INCLUDING:

- LOWER BACK PAIN: THE ALTERED MECHANICS AT THE LUMBOSACRAL JUNCTION CAN LEAD TO INCREASED STRESS ON SURROUNDING STRUCTURES, RESULTING IN PAIN.
- RADICULAR PAIN: LUMBARIZATION MAY CONTRIBUTE TO NERVE ROOT COMPRESSION, LEADING TO PAIN RADIATING DOWN THE LEGS.
- ALTERED MOBILITY: SOME INDIVIDUALS MAY EXPERIENCE DECREASED RANGE OF MOTION OR DIFFICULTY WITH CERTAIN

MOVEMENTS.

DIAGNOSTIC CONSIDERATIONS

PROPER DIAGNOSIS OF LUMBARIZATION IS CRUCIAL FOR EFFECTIVE MANAGEMENT. DIAGNOSTIC METHODS INCLUDE:

- IMAGING STUDIES: X-RAYS, MRIs, AND CT SCANS ARE ESSENTIAL FOR VISUALIZING THE LUMBOSACRAL REGION AND IDENTIFYING ANATOMICAL VARIATIONS.
- CLINICAL EXAMINATION: A THOROUGH PHYSICAL EXAMINATION CAN HELP CORRELATE SYMPTOMS WITH ANATOMICAL FINDINGS.

MANAGEMENT AND TREATMENT OPTIONS

THE MANAGEMENT OF TRANSITIONAL LUMBOSACRAL ANATOMY WITH LUMBARIZATION MAY VARY DEPENDING ON THE SEVERITY OF SYMPTOMS AND INDIVIDUAL PATIENT NEEDS. TREATMENT OPTIONS INCLUDE:

CONSERVATIVE MANAGEMENT

1. PHYSICAL THERAPY: TARGETED EXERCISES CAN HELP STRENGTHEN CORE MUSCLES, IMPROVE FLEXIBILITY, AND ENHANCE OVERALL SPINAL SUPPORT.
2. PAIN MANAGEMENT: NONSTEROIDAL ANTI-INFLAMMATORY DRUGS (NSAIDs) AND OTHER ANALGESICS CAN HELP RELIEVE PAIN AND INFLAMMATION.
3. ACTIVITY MODIFICATION: PATIENTS MAY BENEFIT FROM AVOIDING CERTAIN ACTIVITIES THAT EXACERBATE THEIR SYMPTOMS.

INTERVENTIONAL TREATMENTS

IF CONSERVATIVE MEASURES ARE INEFFECTIVE, INTERVENTIONAL TREATMENTS MAY BE CONSIDERED:

- EPIDURAL STEROID INJECTIONS: THESE CAN PROVIDE TEMPORARY RELIEF FROM RADICULAR PAIN ASSOCIATED WITH NERVE COMPRESSION.
- NERVE BLOCKS: SELECTIVE NERVE ROOT BLOCKS MAY HELP IDENTIFY THE SOURCE OF PAIN AND PROVIDE DIAGNOSTIC INFORMATION.

SURGICAL OPTIONS

IN SEVERE CASES WHERE CONSERVATIVE AND INTERVENTIONAL TREATMENTS FAIL, SURGICAL OPTIONS MAY BE EXPLORED:

- DECOMPRESSION SURGERY: THIS PROCEDURE AIMS TO RELIEVE PRESSURE ON NERVE ROOTS CAUSED BY ANATOMICAL VARIATIONS.
- FUSION SURGERY: IN CASES OF SIGNIFICANT INSTABILITY, SPINAL FUSION MAY BE NECESSARY TO STABILIZE THE LUMBOSACRAL JUNCTION.

CONCLUSION

TRANSITIONAL LUMBOSACRAL ANATOMY WITH LUMBARIZATION OF S1 IS AN INTRIGUING AREA OF STUDY WITHIN SPINAL ANATOMY AND PATHOLOGY. UNDERSTANDING THE ANATOMY, CLINICAL IMPLICATIONS, AND MANAGEMENT OPTIONS IS CRUCIAL FOR HEALTHCARE PROVIDERS. AS LUMBARIZATION CAN LEAD TO SIGNIFICANT SYMPTOMS AND IMPACT A PATIENT'S QUALITY OF

LIFE, EARLY DIAGNOSIS AND APPROPRIATE TREATMENT ARE ESSENTIAL. FURTHER RESEARCH AND CLINICAL STUDIES WILL CONTINUE TO ENHANCE OUR UNDERSTANDING OF THIS CONDITION AND IMPROVE PATIENT OUTCOMES.

FREQUENTLY ASKED QUESTIONS

WHAT IS TRANSITIONAL LUMBOSACRAL ANATOMY?

TRANSITIONAL LUMBOSACRAL ANATOMY REFERS TO VARIATIONS IN THE STRUCTURE AND POSITION OF THE LUMBAR AND SACRAL VERTEBRAE, WHICH CAN AFFECT SPINAL FUNCTION AND BIOMECHANICS.

WHAT DOES LUMBARIZATION OF S1 MEAN?

LUMBARIZATION OF S1 IS A CONDITION WHERE THE FIRST SACRAL VERTEBRA (S1) BEHAVES LIKE A LUMBAR VERTEBRA, RESULTING IN AN EXTRA LUMBAR VERTEBRA IN THE SPINAL COLUMN.

WHAT ARE THE CLINICAL IMPLICATIONS OF LUMBARIZATION OF S1?

LUMBARIZATION OF S1 CAN LEAD TO ALTERED BIOMECHANICS, INCREASED RISK OF LOWER BACK PAIN, AND POTENTIAL NERVE COMPRESSION ISSUES DUE TO THE ABNORMAL SPINAL STRUCTURE.

HOW IS TRANSITIONAL LUMBOSACRAL ANATOMY DIAGNOSED?

TRANSITIONAL LUMBOSACRAL ANATOMY IS TYPICALLY DIAGNOSED USING IMAGING TECHNIQUES SUCH AS X-RAYS, MRI, OR CT SCANS, WHICH CAN REVEAL THE STRUCTURAL VARIATIONS OF THE VERTEBRAE.

WHAT SYMPTOMS MIGHT INDICATE LUMBARIZATION OF S1?

SYMPTOMS MAY INCLUDE LOWER BACK PAIN, RADIATING PAIN TO THE LEGS, MUSCLE WEAKNESS, OR STIFFNESS, OFTEN EXACERBATED BY PHYSICAL ACTIVITY OR PROLONGED SITTING.

CAN LUMBARIZATION OF S1 BE TREATED NON-SURGICALLY?

YES, NON-SURGICAL TREATMENTS SUCH AS PHYSICAL THERAPY, PAIN MANAGEMENT, AND LIFESTYLE MODIFICATIONS CAN HELP ALLEVIATE SYMPTOMS ASSOCIATED WITH LUMBARIZATION OF S1.

IS LUMBARIZATION OF S1 A COMMON CONDITION?

LUMBARIZATION OF S1 IS RELATIVELY UNCOMMON, OCCURRING IN ABOUT 2-10% OF THE POPULATION, BUT IT CAN HAVE SIGNIFICANT IMPLICATIONS FOR THOSE AFFECTED.

WHAT ROLE DOES TRANSITIONAL LUMBOSACRAL ANATOMY PLAY IN SPINE SURGERY?

UNDERSTANDING TRANSITIONAL LUMBOSACRAL ANATOMY IS CRUCIAL FOR SPINE SURGEONS AS IT INFLUENCES SURGICAL PLANNING, POTENTIAL COMPLICATIONS, AND OVERALL OUTCOMES IN PROCEDURES INVOLVING THE LUMBAR AND SACRAL REGIONS.

Find other PDF article:

<https://soc.up.edu.ph/53-scan/pdf?dataid=FUT39-4448&title=shipwreck-island-book-1.pdf>

Transitional Lumbosacral Anatomy With Lumbarization Of S1

Do you whatsapp desktop app or whatsapp web? : r/whatsapp - Reddit

Mar 30, 2023 · WhatsApp Desktop App and WhatsApp Web are two different ways to access WhatsApp account on computers. WhatsApp Web is a browser-based client that allows you to ...

WhatsApp Web consuming way too much CPU (PC) : r/whatsapp - Reddit

Nov 30, 2023 · Hi, everyone. Since last night, WhatsApp Web on Chrome and every other browser I've tried has been using way more CPU than it needs or had previously used. Like, way ...

Whatsapp Desktop for OS 10.15.7 - Apple Community

Dec 16, 2023 · But this really sucks, every time that WhatsApp releases an update, this happens. I'm using WhatsApp web instead and using the feature "Download App" from Chrome ...

Is WhatsApp supported on iPad? - Apple Community

Oct 12, 2023 · Is WhatsApp supported on iPad? I bought an iPad so that I could have an entree into the Apple/ios environment. Everything else for me is Windows, Chrome, ...

WhatsApp Desktop doesn't sync with phone : r/whatsapp - Reddit

Jul 21, 2023 · Whatsapp web, desktop app, all worked fine for me before. Even now, whatsapp app syncs on a macbook but not on windows laptop. I tried everything from uninstalling ...

THE 15 BEST Things to Do in Cleveland (2025) - Tripadvisor

Things to Do in Cleveland, Ohio: See Tripadvisor's 141,397 traveler reviews and photos of Cleveland tourist attractions. Find what to do today, this weekend, or in August. We have reviews of the best places to see in Cleveland. Visit top-rated & must-see attractions.

Fun 3 Day Cleveland Itinerary - Jetsetting Fools

Feb 3, 2025 · Our trip plan for Cleveland is logically arranged by area and the attractions are listed in order so that there is little need for backtracking. Even if you are planning a shorter or longer trip, you can still use our itinerary to plan your time in Cleveland.

25 Best & Fun Things to Do in Cleveland - The Tourist Checklist

Cleveland offers a multitude of attractions that capture the city's spirit. From engaging museums to stunning parks, there's something for everyone to enjoy.

Things to Do, Events, Restaurants & Hotels | Cleveland Vacations

Check out some of the authentic Cleveland experiences available on your next visit, ready to show you who we really are. Few towns can boast a craft beer pedigree like Cleveland.

29 Best & Fun Things To Do In Cleveland (Ohio) - Busy Tourist

Aug 28, 2024 · Wondering what to do in Cleveland, OH? Here you will find the best attractions, activities, points of interest & fun things to do in Cleveland, Ohio.

Perfect 2 Days In Cleveland Itinerary: How To Spend 48 Hours In ...

Jan 17, 2024 · This 2 days in Cleveland itinerary gives you a step by step plan for exploring all of Cleveland's must visit sites, attractions, museums, and landmarks. I also clue you in on what to see,

do, and eat in Cleveland.

Cleveland Travel & Tourism Visitors Guide | Ohio Traveler

“The Cleveland Official Visitors Guide is packed with resources, inspiring articles, and vital information to help visitors from near and far explore the region. The guide provides essential information like restaurant listings, colorful maps, itineraries, and hotel details.

Things to Do in Cleveland - The Cleveland Traveler

From world-class museums to spending time near Lake Erie to exploring Cleveland's different neighborhoods, there's a lot to do in Cleveland! As we move into spring, check out some of my guides to the best things to do in Cleveland this season:

Cleveland Travel Guide - Vacation and Trip Ideas - Midwest Living

Aug 1, 2024 · Visit Cleveland for a stunning architecture, sports, great food and rock 'n' roll history. Discover the best hotels, restaurants and things to do with this local expert's Cleveland travel guide.

Cleveland Itinerary for First-Timers

Feb 27, 2025 · Discover the ultimate Cleveland itinerary for 2025. A complete guide with essential travel tips and day-by-day plans. Start planning now!

Explore the intricacies of transitional lumbosacral anatomy with lumbarization of S1. Discover how this condition impacts spinal health. Learn more today!

[Back to Home](#)