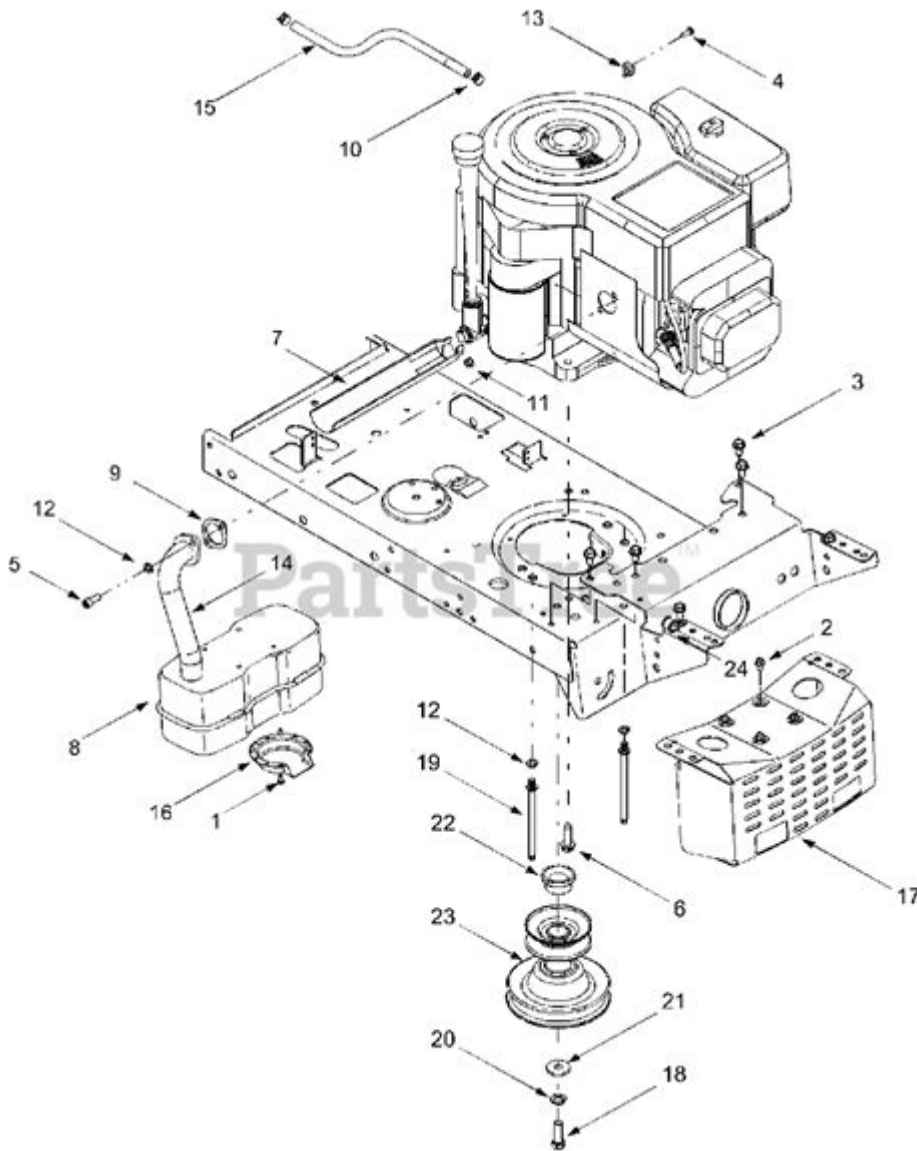


# Troy Bilt 875exi Pressure Washer Parts Diagram



Troy Bilt 875EXi Pressure Washer Parts Diagram is an essential resource for anyone looking to understand the components of this powerful cleaning machine. Whether you are a professional contractor or a homeowner tackling outdoor cleaning tasks, having a thorough understanding of your pressure washer's parts can help you maintain, troubleshoot, and repair the unit effectively. In this article, we will explore the various parts of the Troy Bilt 875EXi pressure washer, how they work together, and provide insights on maintenance and troubleshooting.

## Overview of the Troy Bilt 875EXi Pressure Washer

The Troy Bilt 875EXi is a robust pressure washer designed for high-performance cleaning. It

features a reliable engine, a durable pump, and multiple attachments that make it versatile for various cleaning tasks. This model is equipped with an 875 series engine, which provides enough power to tackle tough grime and dirt on surfaces such as driveways, decks, and vehicles.

## Understanding the Parts Diagram

To effectively use and maintain your Troy Bilt 875EXi pressure washer, it is crucial to familiarize yourself with its parts diagram. The parts diagram serves as a visual representation of the machine's components, showing how they fit together and function.

## Key Components of the Parts Diagram

1. **Engine:** The heart of the pressure washer, responsible for providing the power needed to operate the pump.
2. **Pump:** Converts the engine's mechanical energy into hydraulic energy, pressurizing the water for cleaning purposes.
3. **Hoses:** Transport water from the pump to the spray gun, allowing the user to direct the pressurized water where it is needed.
4. **Spray Gun:** A handheld tool that enables the user to control the pressure and direction of the water spray.
5. **Nozzles:** Interchangeable tips that adjust the width and intensity of the water spray, suitable for various cleaning tasks.
6. **Wheels:** Provide mobility, making it easier to transport the pressure washer to different locations.
7. **Frame:** The structure that houses all the components and provides stability to the machine.
8. **Fuel Tank:** Stores fuel for the engine, allowing for extended operation without frequent refueling.
9. **Oil Reservoir:** Contains the oil necessary for lubricating the engine, ensuring smooth operation.
10. **Choke and Throttle Controls:** Allow the user to start the engine and regulate its speed.

## Detailed Breakdown of Parts

Now that we have an understanding of the key components, let's take a closer look at each part of the Troy Bilt 875EXi pressure washer and its function.

### Engine

The engine is a critical component of the pressure washer. The 875EXi model typically features a Briggs & Stratton engine that provides reliable performance.

- Function: Converts fuel into mechanical energy.
- Common Issues: Hard starting, stalling, or lack of power can usually be traced back to engine problems.

## **Pump**

The pump is another essential part that pressurizes the water.

- Function: It takes in water from the hose and increases its pressure, delivering it through the spray gun.
- Types: The Troy Bilt 875EXi usually features a triplex pump, known for its durability and efficiency.
- Common Issues: Leaks, loss of pressure, or unusual noises can indicate pump problems.

## **Hoses**

Hoses are vital for transporting water from the source to the spray gun.

- Material: Usually made from high-pressure-resistant rubber or PVC.
- Common Issues: Kinks, cracks, or leaks can reduce efficiency and should be replaced if damaged.

## **Spray Gun**

The spray gun is where the user interacts with the pressure washer.

- Features: Often includes a trigger lock for safety and an adjustable spray pattern.
- Common Issues: Clogging or leaks can occur, especially if not properly maintained.

## **Nozzles**

Nozzles are essential for customizing the pressure and spray pattern.

- Types: Typically includes low-pressure soap nozzles, 15-degree, 25-degree, and 40-degree nozzles.
- Function: Each nozzle allows for different cleaning tasks, from applying soap to blasting away tough stains.

## **Wheels**

The wheels make the pressure washer portable.

- Size and Material: Usually made from durable plastic or rubber, designed for easy maneuverability.
- Common Issues: Flat tires or broken axles can hinder mobility.

## **Frame**

The frame provides structure and stability to the pressure washer.

- Material: Often made from steel or heavy-duty plastic, designed to withstand outdoor conditions.
- Common Issues: Rust or physical damage to the frame can compromise the integrity of the machine.

## **Fuel Tank and Oil Reservoir**

These components are essential for the operation and maintenance of the engine.

- Fuel Tank:
  - Capacity: Ensure you use the correct fuel type, typically unleaded gasoline.
  - Common Issues: Contamination or old fuel can lead to engine problems.
- Oil Reservoir:
  - Function: Keeps the engine lubricated.
  - Common Issues: Low oil levels or dirty oil can cause engine wear and tear.

## **Choke and Throttle Controls**

These controls are essential for starting and operating the engine.

- Function: The choke helps with cold starts, while the throttle controls engine speed.
- Common Issues: Malfunctioning controls can lead to starting difficulties or erratic engine behavior.

## **Maintenance Tips for the Troy Bilt 875EXi Pressure Washer**

To ensure the longevity and optimal performance of your pressure washer, regular maintenance is crucial. Here are some tips:

1. Read the Manual: Always refer to the user manual for specific maintenance guidelines and safety information.
2. Check Oil Levels: Regularly check and change the engine oil to prevent wear.

3. Inspect Hoses and Connections: Look for signs of wear or leaks before each use.
4. Clean the Filter: Ensure the water inlet filter is clean to prevent clogging.
5. Store Properly: Keep the pressure washer in a dry place to avoid rust and damage.
6. Winterize: If storing during colder months, properly winterize the unit to prevent freezing of water in the pump.

## Troubleshooting Common Issues

Even with proper maintenance, issues can arise. Here are some common problems and troubleshooting steps:

- Won't Start:
  - Check fuel level and quality.
  - Ensure the choke is in the correct position.
  - Inspect the spark plug for wear or damage.
- Low Pressure:
  - Check for clogged nozzles or hoses.
  - Inspect the pump for leaks.
  - Ensure the inlet water supply is adequate.
- Leaks:
  - Inspect hoses and connections for cracks.
  - Check the pump and seals for damage.

## Conclusion

The Troy Bilt 875EXi Pressure Washer Parts Diagram is an invaluable tool for understanding the components and functionality of your pressure washer. By familiarizing yourself with the various parts, performing regular maintenance, and troubleshooting common issues, you can ensure that your pressure washer operates efficiently and lasts for years to come. Whether you're preparing for a deep clean of your outdoor spaces or simply maintaining your equipment, knowledge of your pressure washer's parts is key to successful and effective cleaning.

## Frequently Asked Questions

### Where can I find the parts diagram for the Troy Bilt 875EXi pressure washer?

You can find the parts diagram for the Troy Bilt 875EXi pressure washer on the official Troy Bilt website under the support or parts section, or by searching for service manuals and diagrams on authorized dealer sites.

## **What are some common replacement parts for the Troy Bilt 875EXi pressure washer?**

Common replacement parts include the pressure pump, hose, spray wand, nozzles, air filter, and spark plug. You can refer to the parts diagram for specific part numbers.

## **How do I interpret the parts diagram for my Troy Bilt 875EXi?**

To interpret the parts diagram, identify the section that corresponds to the component you need. Each part will typically have a number that corresponds with a parts list, which includes the part name and number.

## **Are there any online forums that discuss Troy Bilt 875EXi pressure washer parts?**

Yes, there are several online forums and communities such as Reddit, Pressure Washer Forums, and Troy Bilt's official community where users discuss problems and share information about parts.

## **What should I do if I can't find a specific part for my Troy Bilt 875EXi?**

If you can't find a specific part, consider contacting Troy Bilt customer service for assistance, checking with local repair shops, or looking for aftermarket parts that may be compatible.

## **Can I use parts from a different Troy Bilt model on my 875EXi pressure washer?**

While some parts may be interchangeable, it is best to consult the parts diagram and specifications to ensure compatibility before using parts from a different model.

## **How often should I check the parts diagram for maintenance on my Troy Bilt 875EXi?**

It's a good idea to check the parts diagram during regular maintenance intervals, typically every season or after heavy use, to ensure all parts are in good condition and to identify any that may need replacement.

Find other PDF article:

<https://soc.up.edu.ph/07-post/files?dataid=hZg46-5460&title=art-worksheets-for-high-school.pdf>

# [Troy Bilt 875exi Pressure Washer Parts Diagram](#)

## **Troy - Wikipedia**

It is best known as the setting for the Greek myth of the Trojan War. The archaeological site is open to the public as a tourist ...

## [Troy \(2004\) - IMDb](#)

May 14, 2004 · Troy: Directed by Wolfgang Petersen. With Julian Glover, Brian Cox, Nathan Jones, Adoni Maropis. An ...

## **Where Was Troy And What Happened To It? - WorldAtlas**

Oct 13, 2022 · Troy was an ancient Bronze Age city located in modern-day Turkey. It was also the legendary setting for Homer's epic ...

## **Troy streaming: where to watch movie online? - JustWatch**

Find out how and where to watch "Troy" online on Netflix, Prime Video, and Disney+ today - including 4K and free options.

## **Troy (film) - Wikipedia**

Troy is a 2004 epic historical action film directed by Wolfgang Petersen and written by David Benioff.

## [Troy - Wikipedia](#)

It is best known as the setting for the Greek myth of the Trojan War. The archaeological site is open to the public as a tourist destination, and was added to the UNESCO World Heritage list ...

## **Troy (2004) - IMDb**

May 14, 2004 · Troy: Directed by Wolfgang Petersen. With Julian Glover, Brian Cox, Nathan Jones, Adoni Maropis. An adaptation of Homer's great epic, the film follows the assault on ...

## [Where Was Troy And What Happened To It? - WorldAtlas](#)

Oct 13, 2022 · Troy was an ancient Bronze Age city located in modern-day Turkey. It was also the legendary setting for Homer's epic poems, the Iliad and the Odyssey, mentioned in the ...

## *Troy streaming: where to watch movie online? - JustWatch*

Find out how and where to watch "Troy" online on Netflix, Prime Video, and Disney+ today - including 4K and free options.

## **Troy (film) - Wikipedia**

Troy is a 2004 epic historical action film directed by Wolfgang Petersen and written by David Benioff.

## *Troy (2004) - Full cast & crew - IMDb*

Troy (2004) - Cast and crew credits, including actors, actresses, directors, writers and more.

## **Trojan War - Wikipedia**

The war was waged by the Achaeans (Greeks) against the city of Troy after Paris of Troy took Helen from her husband Menelaus, king of Sparta. The war is one of the most important ...

*Home | Troy Life & Fire Safety Ltd.*

Troy Life & Fire Safety Ltd. is one of the largest suppliers of Fire Alarm, Fire Suppression, Security, Nurse call and Communications Systems in Canada. As an Edwards Authorized ...

Troy - Prime Video

Based on the epic poem The Iliad by Homer.

**Troy Apple Premium Partner | Troyestore**

Uzman ekiplerden teknik destek alın Apple ürünleriniz için destek yetkili servis Troy'da! Hemen randevunuzu oluşturup teknik servis hizmeti alın.

Explore the Troy Bilt 875EXi pressure washer parts diagram to easily identify and replace components. Learn more for a smooth and efficient cleaning experience!

[Back to Home](#)