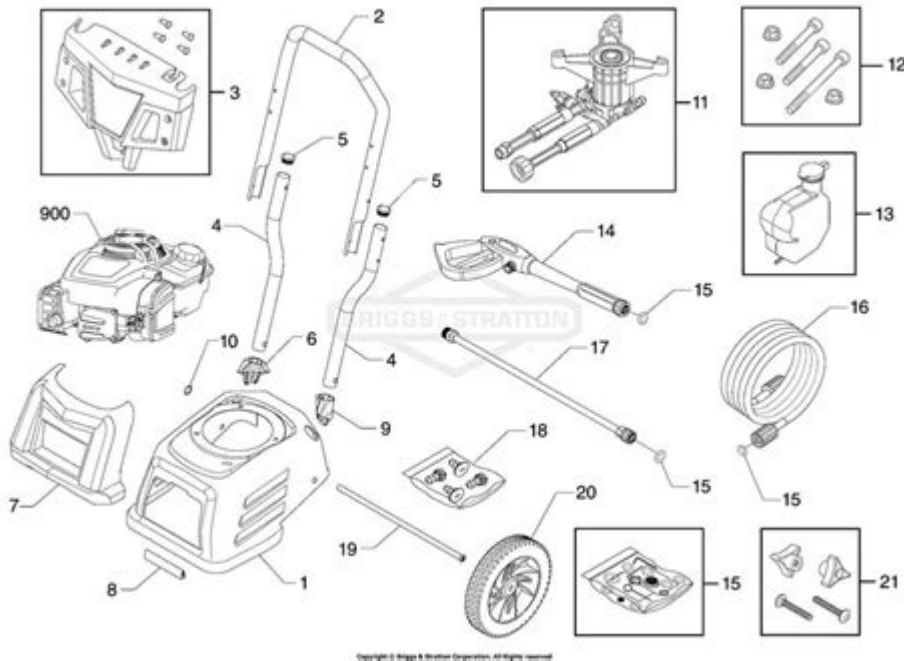


Troy Bilt 2800 Psi Pressure Washer Manual



Troy Bilt 2800 PSI Pressure Washer Manual

When it comes to maintaining the exterior of your home, a pressure washer can be an invaluable tool. The Troy Bilt 2800 PSI pressure washer is designed to tackle a range of cleaning tasks, from washing cars to cleaning decks and siding. To get the most out of your pressure washer, it's essential to understand its operation, maintenance, and safety features. This article will delve into the details of the Troy Bilt 2800 PSI pressure washer manual, ensuring you know how to use this powerful machine effectively.

Understanding Your Troy Bilt 2800 PSI Pressure Washer

The Troy Bilt 2800 PSI pressure washer is powered by a reliable gas engine and is capable of delivering high-pressure water for efficient cleaning. The main features of this model include:

- 2800 PSI: This refers to the maximum pressure the washer can generate, making it suitable for heavy-duty cleaning tasks.
- 2.3 GPM: The machine's flow rate, measured in gallons per minute, indicates how much water is used during operation.
- Quick Connect Nozzles: The pressure washer comes with several nozzles that can be easily connected and changed to suit different cleaning needs.

Safety Precautions

Before using your Troy Bilt 2800 PSI pressure washer, it is crucial to familiarize yourself with safety precautions outlined in the manual. Here are some important safety tips:

1. Read the Manual: Always start by reading the user manual thoroughly to understand the machine's functions and safety measures.
2. Personal Protective Equipment (PPE): Wear appropriate gear, including safety goggles, gloves, and sturdy footwear, to protect yourself from debris and high-pressure water.
3. Check the Area: Ensure the area you plan to clean is free from obstacles, and remove any fragile items or obstructions that could be damaged during cleaning.
4. Fuel Safety: If your pressure washer is gas-powered, fill the tank outdoors and avoid spills. Never refuel while the engine is running or hot.
5. Electrical Safety: For electric models, ensure the power cord is in good condition and avoid using it in wet conditions.

Setting Up Your Pressure Washer

Setting up your Troy Bilt 2800 PSI pressure washer is straightforward but requires attention to detail. Follow these steps:

Initial Assembly

1. Unpack the Unit: Carefully remove the pressure washer from its packaging and check for any damage.
2. Attach the Handle: Secure the handle to the body of the pressure washer using the provided screws. A wrench may be needed for a tight fit.
3. Install the Wheels: Attach the wheels to the base of the pressure washer for easy mobility.

Connecting the Hoses

1. High-Pressure Hose: Connect one end of the high-pressure hose to the pressure washer outlet and the other end to the spray gun.
2. Water Supply Hose: Attach the garden hose to the water inlet on the pressure washer. Make sure it is securely fastened to prevent leaks.

Fuel and Oil Check (for Gas Models)

1. Check Oil Level: Before starting, check the oil level using the dipstick. If necessary, add the appropriate oil recommended in the manual.
2. Fill with Fuel: Use fresh unleaded gasoline to fill the fuel tank. Avoid overfilling, and

wipe away any spills.

Operating Your Pressure Washer

Once your Troy Bilt 2800 PSI pressure washer is set up, it's time to operate it. Here's how to do it safely and efficiently:

Starting the Engine

1. Set the Choke: If the engine is cold, set the choke to the closed position.
2. Prime the Engine: Press the primer bulb a few times to prime the carburetor.
3. Pull the Starter Cord: With the choke set, pull the starter cord until the engine starts. Once it starts, adjust the choke to the open position.

Using the Spray Gun

1. Select the Nozzle: Choose the appropriate quick connect nozzle based on the surface you are cleaning. The red nozzle delivers the highest pressure, while the white nozzle is best for lighter cleaning tasks.
2. Test the Spray: Before directing the spray onto the surface, test it on a small, inconspicuous area to ensure it won't cause damage.
3. Maintain Distance: Keep the spray gun at a consistent distance from the surface to avoid gouging or damaging it.

Maintenance Tips

Regular maintenance is crucial for extending the life of your Troy Bilt 2800 PSI pressure washer. Follow these tips from the manual:

Post-Use Cleaning

1. Flush the System: After each use, disconnect the hoses and run clean water through the system to remove any detergent or debris.
2. Clean the Filter: Check and clean the water inlet filter regularly to prevent clogs.

Periodic Checks

1. Oil Change: Change the engine oil after the first 5 hours of use and then every 50 hours thereafter.

2. Spark Plug Inspection: Check the spark plug periodically and replace it if it shows signs of wear or damage.
3. Hose Inspection: Regularly inspect the hoses for cracks or leaks and replace any damaged hoses.

Troubleshooting Common Issues

Even with proper care, you may encounter issues with your pressure washer. Here are some common problems and solutions based on the manual:

Engine Won't Start

- Check Fuel: Ensure the fuel tank is filled with fresh gasoline.
- Inspect the Choke: Make sure the choke is in the correct position.
- Examine the Spark Plug: Replace the spark plug if it appears worn or dirty.

Low Pressure

- Check for Clogs: Inspect the nozzle and hoses for clogs or blockages.
- Adjust the Nozzle: Ensure you are using the correct nozzle for the task.
- Inspect the Water Supply: Make sure the water supply is adequate and the hose is not kinked.

Conclusion

The Troy Bilt 2800 PSI pressure washer is a powerful tool that can make cleaning tasks significantly easier and more efficient. By following the guidelines outlined in the manual, you can ensure safe operation, proper maintenance, and effective troubleshooting. By investing time in understanding your pressure washer, you can achieve outstanding cleaning results and extend the life of your equipment. Always remember that safety comes first; wearing protective gear and being mindful of your surroundings will lead to a successful and enjoyable cleaning experience.

Frequently Asked Questions

Where can I find the Troy Bilt 2800 PSI pressure washer manual?

You can find the manual for the Troy Bilt 2800 PSI pressure washer on the Troy Bilt official website under the 'Support' or 'Manuals' section.

What type of oil is recommended for the Troy Bilt 2800 PSI pressure washer?

The recommended oil for the Troy Bilt 2800 PSI pressure washer is 10W-30 or 5W-30, depending on the ambient temperature.

How do I assemble the Troy Bilt 2800 PSI pressure washer?

Assembly instructions can be found in the manual, which includes steps for attaching the handle, wheels, and hose. It's essential to follow the diagrams carefully for proper setup.

What maintenance tips are provided in the Troy Bilt 2800 PSI pressure washer manual?

The manual recommends regular maintenance such as checking oil levels, cleaning the filter, inspecting hoses for leaks, and winterizing the unit during colder months.

What safety precautions are mentioned in the manual for the Troy Bilt 2800 PSI pressure washer?

Safety precautions include wearing protective eyewear, ensuring the area is clear of bystanders, and never pointing the nozzle at yourself or others.

What is the warranty period for the Troy Bilt 2800 PSI pressure washer?

The warranty period is typically three years for residential use, but it's important to check the manual for specific terms and conditions.

How do I troubleshoot a starting issue with my Troy Bilt 2800 PSI pressure washer?

The manual provides troubleshooting steps that include checking the fuel level, ensuring the choke is in the correct position, and inspecting the spark plug.

What are the common uses for the Troy Bilt 2800 PSI pressure washer?

Common uses include cleaning driveways, patios, decks, vehicles, and outdoor furniture, as well as removing dirt and grime from various surfaces.

Can I use detergent with my Troy Bilt 2800 PSI pressure washer, and how?

Yes, you can use detergent. The manual explains how to attach the detergent siphon and mix the detergent properly for effective cleaning.

Is there a troubleshooting section in the Troy Bilt 2800 PSI pressure washer manual?

Yes, the manual includes a troubleshooting section that addresses common issues and solutions to help users resolve problems quickly.

Find other PDF article:

<https://soc.up.edu.ph/03-page/files?trackid=Flf48-3237&title=a-sense-of-direction-some-observations-on-the-art-directing-william-ball.pdf>

Troy Bilt 2800 Psi Pressure Washer Manual

Troy - Wikipedia

It is best known as the setting for the Greek myth of the Trojan War. The archaeological site is open to the public as a tourist destination, and was added to the UNESCO World Heritage list in 1998. Troy was repeatedly destroyed and rebuilt during its 4000 years of occupation.

Troy (2004) - IMDb

May 14, 2004 · Troy: Directed by Wolfgang Petersen. With Julian Glover, Brian Cox, Nathan Jones, Adoni Maropis. An adaptation of Homer's great epic, the film follows the assault on Troy by the united Greek forces.

Where Was Troy And What Happened To It? - WorldAtlas

Oct 13, 2022 · Troy was an ancient Bronze Age city located in modern-day Turkey. It was also the legendary setting for Homer's epic poems, the Iliad and the Odyssey, mentioned in the introduction. The city of Troy was strategically positioned between the Mediterranean Sea and the civilizations to the East.

Troy streaming: where to watch movie online? - JustWatch

Find out how and where to watch "Troy" online on Netflix, Prime Video, and Disney+ today - including 4K and free options.

Troy (film) - Wikipedia

Troy is a 2004 epic historical action film directed by Wolfgang Petersen and written by David Benioff.

Troy (2004) - Full cast & crew - IMDb

Troy (2004) - Cast and crew credits, including actors, actresses, directors, writers and more.

Trojan War - Wikipedia

The war was waged by the Achaeans (Greeks) against the city of Troy after Paris of Troy took Helen from her husband Menelaus, king of Sparta. The war is one of the most important events in Greek mythology, and it has been narrated through many works of ...

Troy Life & Fire Safety Ltd. is one of the largest suppliers of Fire Alarm, Fire Suppression, Security, Nurse call and Communications Systems in Canada. As an Edwards Authorized ...

Troy - Prime Video

Based on the epic poem The Iliad by Homer.

Troy Apple Premium Partner | Troyestore

Uzman ekiplerden teknik destek alın Apple ürünleriniz için destek yetkili servis Troy'da! Hemen randevunuzu oluşturup teknik servis hizmeti alın.

Troy - Wikipedia

It is best known as the setting for the Greek myth of the Trojan War. The archaeological site is open to the public as a tourist destination, and was added to the UNESCO World Heritage list ...

Troy (2004) - IMDb

May 14, 2004 · Troy: Directed by Wolfgang Petersen. With Julian Glover, Brian Cox, Nathan Jones, Adoni Maropis. An adaptation of Homer's great epic, the film follows the assault on ...

Where Was Troy And What Happened To It? - WorldAtlas

Oct 13, 2022 · Troy was an ancient Bronze Age city located in modern-day Turkey. It was also the legendary setting for Homer's epic poems, the Iliad and the Odyssey, mentioned in the ...

Troy streaming: where to watch movie online? - JustWatch

Find out how and where to watch "Troy" online on Netflix, Prime Video, and Disney+ today - including 4K and free options.

Troy (film) - Wikipedia

Troy is a 2004 epic historical action film directed by Wolfgang Petersen and written by David Benioff.

Troy (2004) - Full cast & crew - IMDb

Troy (2004) - Cast and crew credits, including actors, actresses, directors, writers and more.

Trojan War - Wikipedia

The war was waged by the Achaeans (Greeks) against the city of Troy after Paris of Troy took Helen from her husband Menelaus, king of Sparta. The war is one of the most important ...

Home | Troy Life & Fire Safety Ltd.

Troy Life & Fire Safety Ltd. is one of the largest suppliers of Fire Alarm, Fire Suppression, Security, Nurse call and Communications Systems in Canada. As an Edwards Authorized ...

Troy - Prime Video

Based on the epic poem The Iliad by Homer.

Troy Apple Premium Partner | Troyestore

Uzman ekiplerden teknik destek alın Apple ürünleriniz için destek yetkili servis Troy'da! Hemen randevunuzu oluşturup teknik servis hizmeti alın.

Find the Troy Bilt 2800 PSI pressure washer manual here! Get essential tips

[Back to Home](#)