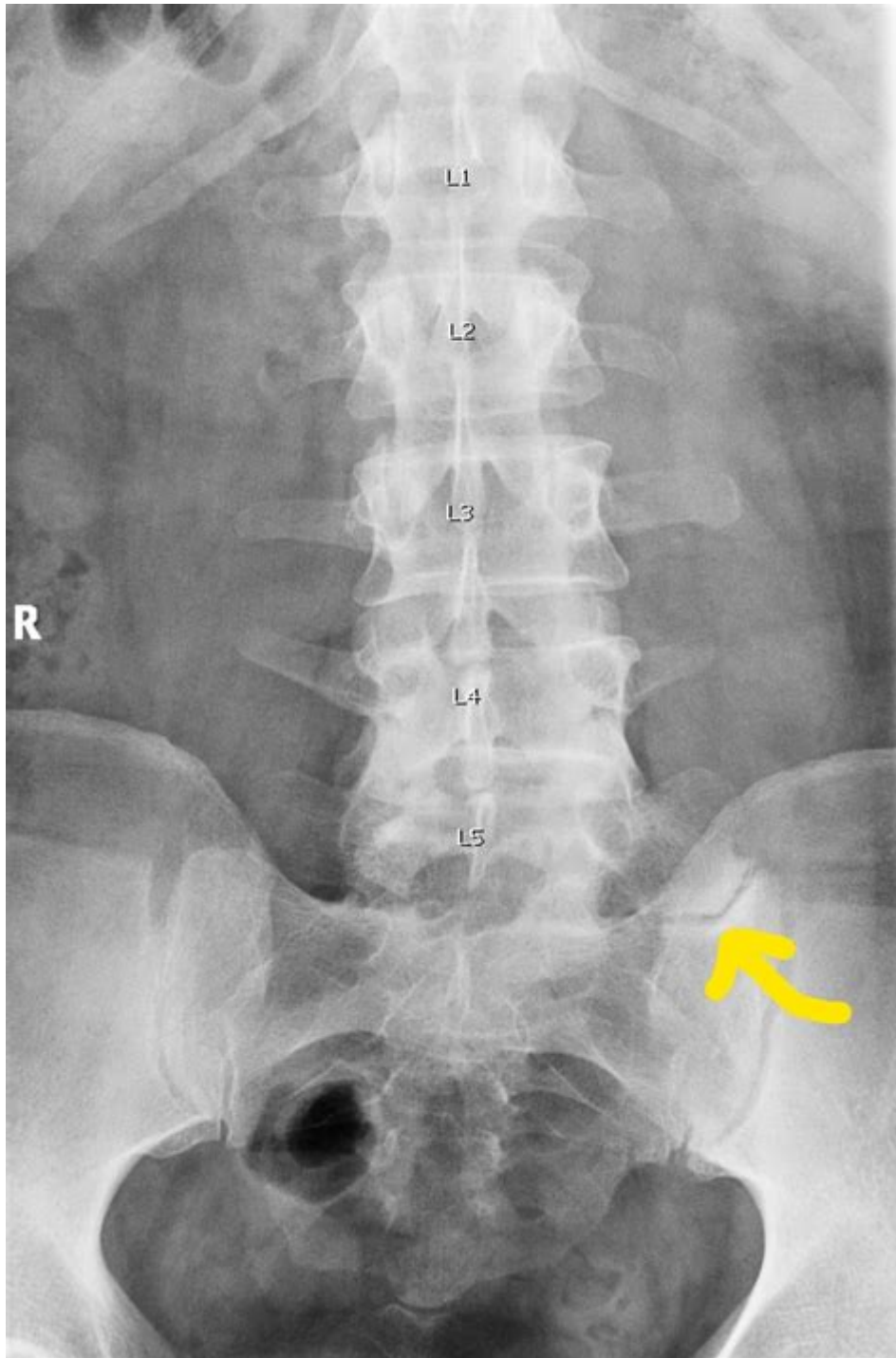


# Transitional Lumbosacral Anatomy With Sacralization Of L5



**Transitional lumbosacral anatomy with sacralization of L5** is a significant area of study in the field of orthopedics and spinal anatomy. The lumbosacral region, which connects the lumbar spine to the sacrum, plays a crucial role in the stability and mobility of the pelvis and lower back. Anomalies such as sacralization of the fifth lumbar vertebra (L5) can impact both the structure and function of this area. Understanding the transitional lumbosacral anatomy and its variations is essential for healthcare professionals, especially when diagnosing and managing lower back disorders.

# Understanding the Basics of Lumbosacral Anatomy

The lumbosacral region consists of five lumbar vertebrae (L1-L5) and the sacrum, which is made up of five fused vertebrae (S1-S5). This area is crucial for weight-bearing and movement, serving as the foundation for the upper body. The anatomical features include:

- **Vertebral Bodies:** These are the thick, bony segments that bear weight.
- **Intervertebral Discs:** These fibrocartilaginous structures act as shock absorbers between the vertebrae.
- **Facet Joints:** These joints allow for flexibility and movement in the spine.
- **Spinous Processes:** Projections that provide attachment for muscles and ligaments.
- **Spinal Canal:** The space through which the spinal cord and nerve roots pass.

The lumbosacral junction is the area where the lumbar spine transitions into the sacrum. This junction is particularly important because it is a common site for mechanical stress and injury.

## Transitional Vertebrae: Definition and Types

Transitional vertebrae occur when there is a variation in the normal anatomical structure of the spine. They can be classified into two main categories:

1. **Sacralization:** This occurs when the last lumbar vertebra (L5) fuses partially or completely with the sacrum. This results in a sacralized L5 vertebra, which may alter the biomechanics of the lumbosacral region.
2. **Lumbalization:** This refers to the condition where the first sacral vertebra (S1) behaves like a lumbar vertebra, creating a sixth lumbar vertebra. This condition is less common than sacralization.

## Causes of Sacralization of L5

The exact cause of sacralization of L5 is not entirely understood. However, several factors may contribute to this condition:

- **Genetic Factors:** Family history may play a role in the development of transitional vertebrae.

- **Developmental Anomalies:** Abnormal embryological development can lead to variations in spinal structure.
- **Mechanical Stress:** Repeated stress on the lumbosacral region may lead to pathological changes over time.

## Clinical Significance of Sacralization of L5

The presence of a sacralized L5 can have several clinical implications. While some individuals may remain asymptomatic, others may experience a range of symptoms related to altered spinal biomechanics.

### Potential Symptoms

Individuals with sacralization may exhibit various symptoms, including:

- **Lower Back Pain:** Pain in the lower back is one of the most common complaints.
- **Radiating Pain:** Pain may radiate to the buttocks, hips, or down the leg (sciatica).
- **Stiffness:** Stiffness in the lower back or pelvis can limit mobility.
- **Muscle Spasms:** Increased muscle tension may occur in response to altered mechanics.

### Diagnosis of Sacralization of L5

Diagnosing sacralization of L5 typically involves a combination of patient history, physical examination, and imaging studies. The process may include:

1. **Patient History:** A detailed history can provide insights into the onset and nature of symptoms.
2. **Physical Examination:** A thorough physical examination can help identify areas of tenderness, range of motion, and neurological deficits.
3. **X-rays:** Radiographic imaging can visualize the alignment and structure of the lumbosacral region.
4. **MRI or CT Scans:** Advanced imaging techniques may be necessary to assess the soft tissues, discs, and nerve roots.

# Treatment Options for Sacralization of L5

The management of symptoms related to sacralization of L5 can vary depending on the severity of the condition and the individual's specific symptoms. Common treatment options include:

## Conservative Treatments

- **Physical Therapy:** Exercises aimed at strengthening the core and improving flexibility may alleviate symptoms.
- **Medications:** Nonsteroidal anti-inflammatory drugs (NSAIDs) can help manage pain and inflammation.
- **Chiropractic Care:** Manual adjustments may provide relief for some individuals.
- **Activity Modification:** Avoiding activities that exacerbate symptoms can prevent further injury.

## Surgical Interventions

In cases where conservative treatments fail to provide relief, surgical options may be considered. These may include:

1. **Laminectomy:** Removal of a portion of the vertebrae to relieve pressure on nerves.
2. **Spinal Fusion:** Fusing the affected vertebrae may stabilize the spine and alleviate pain.
3. **Discectomy:** Removal of herniated disc material if it is compressing nerve roots.

## Conclusion

**Transitional lumbosacral anatomy with sacralization of L5** is a complex area that has significant implications for spinal health. Understanding the anatomy, potential symptoms, and treatment options is essential for effective diagnosis and management. While sacralization may lead to discomfort and functional limitations in some individuals, many can manage their symptoms successfully through conservative measures. Healthcare professionals must remain vigilant in recognizing this condition and tailoring treatment approaches to each patient's unique needs. By doing so, they can help improve quality of life and maintain the functional integrity of the lumbosacral region.

## **Frequently Asked Questions**

### **What is transitional lumbosacral anatomy?**

Transitional lumbosacral anatomy refers to the anatomical variations at the junction of the lumbar spine and sacrum, where the last lumbar vertebra (L5) may exhibit characteristics of the sacrum.

### **What is sacralization of L5?**

Sacralization of L5 is a condition where the fifth lumbar vertebra partially or completely fuses with the sacrum, leading to changes in spinal mechanics and potential clinical symptoms.

### **What are common symptoms associated with sacralization of L5?**

Common symptoms may include lower back pain, reduced range of motion, and discomfort during physical activities, particularly in the lumbar region.

### **How is sacralization of L5 diagnosed?**

Diagnosis is typically made through imaging studies such as X-rays, MRI, or CT scans that reveal the anatomical transition and any associated changes in the spine.

### **What is the significance of recognizing transitional lumbosacral anatomy?**

Recognizing transitional lumbosacral anatomy is important for understanding individual variations in spinal structure, which can influence treatment approaches for back pain and other related conditions.

### **Can sacralization of L5 lead to complications?**

Yes, sacralization can lead to complications such as altered biomechanics, increased stress on adjacent vertebrae, and potential development of degenerative changes or nerve compression.

### **What treatment options are available for patients with sacralization of L5?**

Treatment options may include physical therapy, pain management strategies, chiropractic care, and in severe cases, surgical intervention to address structural issues or nerve compression.

### **Is sacralization of L5 hereditary or acquired?**

Sacralization of L5 is primarily considered a developmental variation, but certain factors such as repetitive stress or injury may contribute to its presentation in individuals.

Find other PDF article:

<https://soc.up.edu.ph/02-word/files?docid=APN64-1559&title=601-words-you-need-to-know-to-pass-y>

## **Transitional Lumbosacral Anatomy With Sacralization Of L5**

*Parking - Quad Cities International Airport*

Jul 1, 2025 · The Airport offers the ability to pay for your parking inside the terminal once you are ready to hop in your vehicle and head home. Simply follow the on-screen instructions at one of the Pay on Foot machines located either under the Monocoupe or near Exit 6.

### **Quad City Airport (MLI) Parking Rates and Map**

Quad City International Airport (MLI) parking rates, guide and maps. Compare and save, book online.

*Quad City Airport Parking Guide: Rates, Lots, Hours - iFly*

Quad City Airport MLI Parking Guide: Short and Long Term Rates, Lot Locations, Hours, Electric charging, Oversized vehicles, Payment methods, Valet...

*Quad City International Airport (MLI), Moline Parking*

Find the best deals on parking at Quad City International Airport. Compare rates for free, covered, valet, and more!

*Quad Cities International Airport Parking*

18 hours ago · Cheap Quad Cities International Airport Parking At MLI. We know, the price looks to good to be true! Don't worry, it's true, and it's a great location. In fact you'll be parking at a professional parking facility. You'll be e-mailed where you're parking for \$2.75 a day once you make the purchase on our site. Reserve today!

Quad City Airport Parking: Rates & Tips for 2024 [2024]

Sep 22, 2024 · Discover Quad City International Airport parking rates & tips for hassle-free travel. Park smarter at MLI & save time during your trip!

*Quad City International Airport*

0-60 min: \$1.00. Rates increase incrementally by the hour in both lots, until the daily rate has been reached. Both lots feature handicapped accessible parking stalls. Enter through long or short term entry gates, pull ticket. Submit ticket and pay upon exit. No reservation needed. EV charging available in short term lot. Short term rates apply.

Parking & Transportation - Quad Cities International Airport

We deliver convenient parking you can count on which is why we make it as stress-free as possible. With fewer crowds and less hassle, know that there will always be a spot for you (literally) at the Quad Cities International Airport.

*Quad City Airport Parking - Book Cheap Moline Airport Parking ...*

How much does it cost to park at Quad Cities International Airport? Parking at Quad Cities International Airport will cost \$15 per day at the long-term lots and \$7 per day at the short-term

lots.

#### Quad Cities International Airport (MLI) - AirportPost

Let's break down the parking fees at the Quad Cities International Airport. There are two parking lots at MLI, the Short Term Premium Parking Lot and the Long Term Economy Parking Lot.

### **Google Chrome - The Fast & Secure Web Browser Built to be Yours**

Chrome is the official web browser from Google, built to be fast, secure, and customizable. Download now and make it yours.

### **Download and install Google Chrome**

How to install Chrome Important: Before you download, you can check if Chrome supports your operating system and other system requirements.

### **Google Chrome Web Browser**

To install Chrome, simply download the installation file, then look for it in your downloads folder. Open the file and follow the instructions. Once Chrome is installed, you can delete the install ...

### **Download Google Chrome - Free - latest version**

Jun 4, 2025 · Download Google Chrome for Windows now from Softonic: 100% safe and virus free. More than 123410 downloads this month. Download Google Chrome latest

#### *Download Chrome - Google Help*

On your iPhone or iPad, open App Store. In the search bar, enter Chrome. Tap Get. To install, follow the on-screen instructions. If prompted, enter your Apple ID password. To start ...

### **Google Chrome Browser Download Free - 138.0.7204.169**

Jul 22, 2025 · Google Chrome is a fast, simple, and secure web browser, built for the modern web. Chrome combines a minimal design with sophisticated technology to make the web ...

### **Google Chrome Help**

Official Google Chrome Help Center where you can find tips and tutorials on using Google Chrome and other answers to frequently asked questions.

#### How to Install Google Chrome Browser on Windows?

Feb 3, 2025 · Learn how to install Google Chrome on Windows 11, 10, or 7. Step-by-step guide for downloading, updating, uninstalling, setting as default, and checking Chrome version.

#### *Enterprise Browser Download for Windows & Mac - Chrome ...*

Get the tools to deploy Chrome browser for your enterprise for Windows & Mac. Explore downloads, management templates, updates and try beta.

### **Google Chrome - Apps on Google Play**

Chrome helps you do what's possible on the web. Choose the fast, secure browser by Google. GET THE BEST OF GOOGLE IN CHROME • SEARCH WITH GOOGLE - Search and get ...

Explore transitional lumbosacral anatomy with sacralization of L5. Understand its implications for back health and treatment options. Learn more today!

[Back to Home](#)