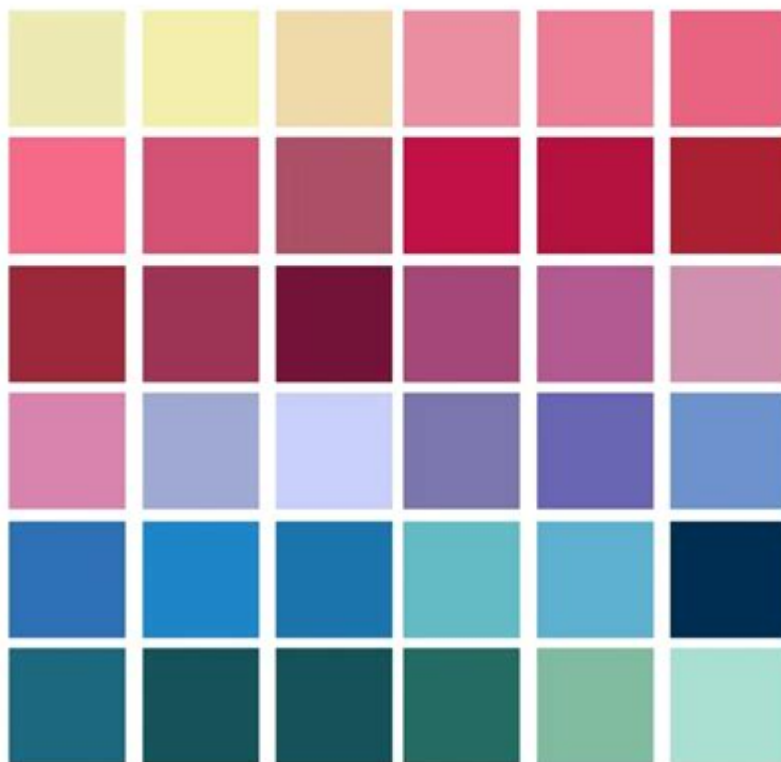


True Summer Color Analysis



TRUE SUMMER COLORS



SEASONAL COLOR GUIDE

THEALIGNEDLOVER.COM

True summer color analysis is an essential aspect of personal styling that focuses on identifying and utilizing the colors that harmonize with an individual's features, particularly for those with cool undertones in their skin. This analysis helps individuals understand which colors enhance their natural beauty, allowing them to make informed decisions about clothing, makeup, and accessories.

In the world of color analysis, summers are typically characterized by soft, muted tones rather than vivid or overly warm shades. This article will explore the characteristics of true summer individuals, the color palette that best suits them, and how to incorporate these colors into one's wardrobe and lifestyle.

Understanding True Summer Color Analysis

True summer is one of the subcategories within the seasonal color analysis framework. To understand true summer, it's essential to recognize the broader context of seasonal color analysis, which divides individuals into four primary seasons: winter, spring, summer, and autumn. Each season is further divided into subcategories, allowing for a more precise analysis.

The Basics of Color Analysis

Color analysis is based on the idea that different colors can enhance or detract from a person's natural beauty. The analysis considers various factors:

1. **Skin Undertone:** True summer individuals typically have cool undertones, meaning their skin has a pink, blue, or neutral hue.
2. **Hair Color:** True summers usually have ashy blonde, light brown, or soft, muted shades of hair.
3. **Eye Color:** Their eye colors often include cool shades such as gray, blue, or soft green.

Understanding these elements helps in narrowing down the colors that will create the most flattering looks.

Characteristics of True Summer Individuals

True summer individuals possess a unique combination of traits that define their seasonal palette. Recognizing these characteristics is crucial for anyone undergoing color analysis.

Skin Tone

- **Cool Undertones:** True summer skin tones often have a rosy or bluish hue.
- **Complexion Varieties:** Complexions can range from fair to medium, but they usually have a soft appearance without the golden warmth often seen in autumn or spring types.

Hair Color

- **Soft and Ashy:** Hair colors are generally ash blonde, light brown, or soft muted shades, devoid of harsh or overly warm tones.
- **Reflective Quality:** True summer hair often has a reflective quality, contributing to a gentle overall appearance.

Eye Color

- Cool and Muted: Eye colors range from light blue to soft gray-green, often with a muted quality that complements the overall summer palette.
- Defined Contrast: True summers may have a subtle contrast between their eye color and the rest of their features.

The True Summer Color Palette

The true summer color palette is characterized by soft, cool colors that reflect the essence of the season. These colors tend to be more muted and delicate, providing a harmonious balance to the features of true summer individuals.

Primary Colors

1. Pastel Shades: Soft pinks, lavenders, and light blues are staples in the true summer palette.
2. Cool Neutrals: Gray, taupe, and soft white are excellent choices, providing a foundation for outfits.
3. Muted Jewel Tones: Instead of bright jewel tones, true summers should opt for softer variations like muted teal, soft rose, and lavender.

Colors to Avoid

While true summers can wear many colors, there are specific shades that can overwhelm or clash:

- Bright and Warm Colors: Avoid colors like bright orange, fiery red, or anything overly warm that can compete with your natural coloring.
- Deep and Dark Shades: Dark colors such as black or deep brown can be too harsh and may drain the natural glow of true summer individuals.

Incorporating True Summer Colors Into Your Wardrobe

Once you have identified your true summer color palette, the next step is to incorporate these colors into your wardrobe. Here are some tips for doing so effectively:

Building a True Summer Wardrobe

1. Start with Basics: Invest in essential pieces in your best neutrals, like a soft gray blazer or a light blue blouse. These can serve as a foundation for multiple outfits.
2. Layering Pieces: Look for cardigans and light jackets in pastel shades that can add depth to your outfits without overpowering them.
3. Statement Accessories: Utilize scarves, bags, and jewelry in your muted jewel tones to add pops of color without overwhelming your look.

Choosing Patterns and Textures

- Opt for Soft Patterns: Floral prints, polka dots, and soft stripes in your palette can add interest without being too bold.
- Textures Matter: Choose fabrics that complement your soft coloring, such as light cottons, silks, and soft knits that drape gently.

True Summer Makeup Tips

Makeup is another area where true summer color analysis can shine. The right makeup can enhance your natural beauty and complement your wardrobe choices.

Foundation and Base Makeup

- Cool Undertones: Opt for foundations with a pink or neutral base to match your cool undertones.
- Soft Coverage: Choose lightweight formulas for a natural look that blends seamlessly with your complexion.

Eye Makeup

1. Eyeshadow: Soft grays, cool taupes, and muted purples are perfect for enhancing true summer eyes.
2. Eyeliner and Mascara: Stick to brown or gray instead of harsh black to maintain a soft look.

Lip Colors

- Soft Pinks and Berries: Choose lip colors in soft pinks, muted berries, or rosy nudes to enhance your features without overpowering them.

Conclusion

True summer color analysis offers a transformative approach to personal style, enabling individuals to embrace their natural beauty through the use of a carefully curated color palette. By understanding the characteristics of true summer individuals, utilizing the right colors in clothing and makeup, and avoiding those that clash, anyone can enhance their appearance and feel confident in their style choices. With the right knowledge and tools, true summer individuals can navigate their wardrobe with ease, embracing the soft, cool hues that truly reflect their essence.

Frequently Asked Questions

What is true summer color analysis?

True summer color analysis is a method of determining which colors complement an individual's natural coloring, particularly focusing on those with cool undertones, soft tones, and muted shades that reflect the essence of summer.

How can I tell if I'm a true summer in color analysis?

You can identify as a true summer if you have cool undertones in your skin, light to medium hair (often ash blonde or light brown), and eyes that are typically blue, gray, or soft green. Additionally, true summers look best in soft, cool colors like lavender, dusty rose, and muted blues.

What colors should true summers avoid?

True summers should avoid overly bright, warm, or dark colors, such as oranges, intense reds, and deep earthy tones, as these can overpower their natural coloring and create an unflattering contrast.

Can true summers wear black or white?

While true summers can wear black or white, it is generally recommended to opt for softer, muted versions of these colors, such as charcoal gray or off-white, to maintain harmony with their natural palette.

What are some signature colors for true summers?

Signature colors for true summers include soft pastels, cool blues, muted pinks, and gentle greens. These colors enhance their natural beauty and create a balanced look.

How does true summer color analysis differ from other summer types?

True summer differs from other summer types, like light summer or soft summer, in that true summers have a clearer cool undertone and prefer more saturated, yet still soft, colors. Light summers tend to wear lighter and brighter shades, while soft summers may favor more muted and blended tones.

Find other PDF article:

<https://soc.up.edu.ph/19-theme/files?docid=Wum91-8041&title=economics-movies-for-high-school.pdf>

True Summer Color Analysis

ture true

🔗[java](#)🔗🔗🔗🔗🔗🔗_🔗🔗🔗
Mar 5, 2024 · 🔗🔗🔗🔗Java🔗🔗🔗🔗🔗🔗🔗“/gamerule keepInventory true”🔗 🔗🔗🔗🔗Java🔗🔗🔗🔗🔗🔗🔗
🔗🔗🔗🔗🔗🔗🔗🔗🔗🔗🔗🔗 ...

🔗🔗🔗1.12 🔗🔗🔗🔗🔗🔗_🔗🔗🔗
Mar 31, 2020 · 🔗🔗gamerule keepInventory true🔗🔗🔗🔗🔗🔗🔗🔗🔗🔗1🔗🔗🔗🔗🔗🔗🔗🔗🔗 2🔗🔗🔗T🔗
🔗🔗🔗🔗🔗🔗

Excel IF🔗🔗🔗🔗-🔗🔗🔗
🔗🔗🔗🔗🔗TRUE🔗🔗🔗🔗1🔗🔗🔗🔗🔗TRUE🔗🔗🔗🔗2🔗 🔗🔗🔗🔗🔗🔗🔗🔗🔗0🔗🔗🔗B🔗🔗🔗🔗🔗🔗

science direct🔗🔗PDF🔗🔗🔗🔗🔗🔗🔗🔗🔗🔗 ...
science direct🔗🔗PDF🔗🔗🔗🔗🔗🔗🔗🔗🔗🔗?

🔗🔗🔗 - 🔗🔗
Mar 20, 2024 · 🔗🔗🔗 7 🔗🔗🔗🔗🔗🔗 🔗🔗🔗🔗🔗🔗🔗🔗🔗🔗 🔗🔗🔗🔗🔗🔗🔗🔗🔗🔗🔗🔗🔗🔗... 🔗
4 🔗🔗🔗🔗🔗 ...

🔗🔗🔗🔗1.20.1 - 🔗🔗🔗
Nov 20, 2024 · 🔗🔗🔗🔗1.20.1🔗🔗🔗🔗1.20.1🔗🔗🔗🔗🔗🔗🔗🔗“/gamerule keepInventory true”🔗🔗🔗🔗🔗
🔗🔗🔗🔗🔗🔗🔗🔗🔗🔗🔗🔗 ...

Unlock your true potential with our guide to true summer color analysis. Discover how to enhance your natural beauty with the perfect color palette. Learn more!

[Back to Home](#)