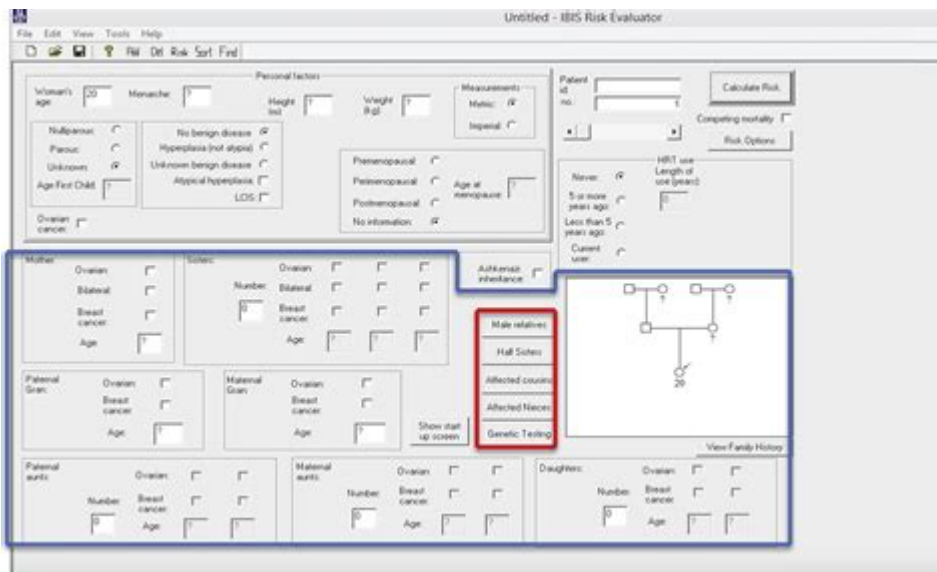


# Tyler Cusick Risk Assessment Calculator



**Tyler Cusick Risk Assessment Calculator** is a powerful tool designed to assist healthcare professionals, particularly in the fields of mental health and substance abuse, in evaluating the risk levels associated with individuals. This calculator streamlines the assessment process, allowing practitioners to make informed decisions regarding patient care and intervention strategies. In this article, we will explore the features, methodology, and applications of the Tyler Cusick Risk Assessment Calculator, along with its significance in clinical practice.

## Understanding the Tyler Cusick Risk Assessment Calculator

The Tyler Cusick Risk Assessment Calculator is a specialized algorithm that quantifies risk based on various factors, including demographic information, behavioral patterns, and clinical history. It is particularly beneficial in situations where understanding an individual's risk of harm to themselves or others is crucial. By utilizing a structured approach, the calculator helps in identifying individuals who may require immediate intervention or additional support.

## Key Features of the Calculator

1. **User-Friendly Interface:** The calculator is designed with a straightforward interface that allows healthcare professionals to input data easily.
2. **Evidence-Based Approach:** The risk assessment is grounded in empirical research and clinical guidelines, ensuring that the results are reliable and

valid.

3. Customizable Parameters: Users can adjust the parameters based on the specific population they are assessing, making it versatile across different settings.

4. Real-Time Calculations: The calculator provides instant feedback, allowing clinicians to quickly respond to the needs of their patients.

5. Comprehensive Reporting: After assessment, the tool generates a detailed report that can be used to guide treatment planning and discussions with patients.

## **Components of the Risk Assessment**

The Tyler Cusick Risk Assessment Calculator evaluates several key components that contribute to an individual's overall risk profile. These include:

### **1. Demographic Information**

- Age: Different age groups may have varying risk factors associated with mental health and substance use.
- Gender: Research indicates that risk may be influenced by gender, affecting both the prevalence and types of disorders.
- Cultural Background: Cultural factors can impact how individuals express distress or seek help.

### **2. Clinical History**

- Past Mental Health Issues: Previous diagnoses or treatments can indicate a higher risk of recurrence.
- Substance Abuse History: A history of substance use can significantly elevate risk levels.
- Family History: Genetic predispositions and familial patterns may also play a role in assessing risk.

### **3. Behavioral Indicators**

- Suicidal Ideation: The presence of thoughts about self-harm or suicide is a critical factor.
- Aggressive Behaviors: History of violence or aggression towards others is another vital indicator.
- Social Support: The level of social support or isolation can influence an individual's risk.

# Methodology of the Calculator

The methodology behind the Tyler Cusick Risk Assessment Calculator involves a systematic approach to data collection and analysis. The following steps outline the process:

## 1. Data Collection

Healthcare providers gather relevant information through interviews, questionnaires, and clinical assessments. The data collected includes both qualitative and quantitative measures.

## 2. Risk Factor Scoring

Each risk factor is assigned a score based on its severity and relevance to the individual's situation. The scoring system is designed to reflect the importance of different factors in predicting risk.

## 3. Calculation of Total Risk Score

The individual scores are aggregated to produce a total risk score. This score helps in determining the level of intervention required—low, moderate, or high risk.

## 4. Interpretation of Results

The results are interpreted in the context of clinical judgment, allowing healthcare providers to make informed decisions about treatment options, safety plans, and referrals.

## Applications of the Tyler Cusick Risk Assessment Calculator

The Tyler Cusick Risk Assessment Calculator can be utilized in various settings, including:

## **1. Mental Health Clinics**

In mental health clinics, the calculator assists practitioners in evaluating patients presenting with symptoms of depression, anxiety, or psychosis. It enables them to prioritize care based on risk levels.

## **2. Substance Abuse Treatment Centers**

For substance abuse treatment facilities, the calculator helps identify individuals who may be at higher risk for relapse or self-harm, facilitating targeted interventions.

## **3. Emergency Departments**

In emergency departments, the calculator is crucial for quickly assessing patients who may be experiencing a mental health crisis, ensuring timely and appropriate care.

## **4. School Counseling Services**

School counselors can use the tool to evaluate the risk of self-harm or suicidal ideation among students, allowing for early intervention and support.

# **Benefits of Using the Tyler Cusick Risk Assessment Calculator**

The integration of the Tyler Cusick Risk Assessment Calculator into clinical practice offers numerous benefits:

## **1. Enhanced Accuracy**

The calculator improves the accuracy of risk assessments by providing a structured, evidence-based approach, reducing the chances of subjective bias.

## **2. Improved Patient Outcomes**

By identifying individuals at higher risk, healthcare providers can implement

timely interventions, which can lead to better patient outcomes and reduced rates of self-harm or violence.

### **3. Streamlined Workflow**

The calculator simplifies the assessment process, allowing healthcare professionals to focus more on patient care rather than administrative tasks.

### **4. Data-Driven Decision Making**

The use of the calculator promotes a data-driven approach to clinical decision-making, enhancing the overall quality of care.

## **Challenges and Considerations**

While the Tyler Cusick Risk Assessment Calculator is a valuable tool, there are several challenges and considerations to keep in mind:

### **1. Limitations of Risk Assessment**

Risk assessments are not foolproof, and there is always a degree of uncertainty involved. Clinicians must combine the calculator's results with their clinical judgment.

### **2. Training and Familiarization**

Healthcare providers may require training to effectively use the calculator and interpret its results accurately.

### **3. Ethical Considerations**

The use of risk assessment tools raises ethical questions about labeling individuals and the potential stigmatization of those identified as high risk.

## **Future Directions and Improvements**

As the field of mental health continues to evolve, so too must the tools we use. Future developments for the Tyler Cusick Risk Assessment Calculator may include:

- Integration with Electronic Health Records (EHR): Streamlining data entry and access to patient history.
- Machine Learning Algorithms: Enhancing predictive capabilities through advanced algorithms that learn from ongoing data.
- Patient Self-Assessment Features: Allowing individuals to contribute to their risk assessment process, increasing engagement and ownership of their care.

## **Conclusion**

The Tyler Cusick Risk Assessment Calculator is an essential tool for healthcare professionals working with at-risk populations. By providing a structured, evidence-based approach to risk assessment, it enhances clinical decision-making, improves patient outcomes, and streamlines workflows. Despite its challenges, the calculator represents a significant advancement in the way healthcare providers assess and manage risk in mental health and substance abuse contexts. As we continue to refine these tools and methodologies, the potential for improved patient care and safety is immense.

## **Frequently Asked Questions**

### **What is the Tyler Cusick Risk Assessment Calculator?**

The Tyler Cusick Risk Assessment Calculator is a tool designed to evaluate the level of risk associated with various factors, often used in fields such as finance, health, and safety to inform decision-making.

### **How does the Tyler Cusick Risk Assessment Calculator work?**

The calculator uses a standardized algorithm that inputs various risk factors and calculates a risk score based on the data provided, helping users to quantify and assess potential risks.

### **Who can benefit from using the Tyler Cusick Risk Assessment Calculator?**

The calculator is beneficial for professionals in finance, healthcare, project management, and safety industries, as well as individuals looking to

assess personal or business-related risks.

## Is the Tyler Cusick Risk Assessment Calculator available for public use?

Yes, the Tyler Cusick Risk Assessment Calculator is available online and can be accessed by anyone looking to perform risk assessments, although it may require user registration or a subscription for advanced features.

## What are some common applications of the Tyler Cusick Risk Assessment Calculator?

Common applications include financial risk assessment, healthcare risk management, project risk evaluation, and safety hazard assessments, helping organizations make informed decisions based on calculated risk levels.

Find other PDF article:

<https://soc.up.edu.ph/61-page/files?ID=IOJ62-8955&title=the-science-behind-sight.pdf>

## [Tyler Cusick Risk Assessment Calculator](#)

Tyler, the Creator? -

Tyler, the Creator Mixtape "Wolf Haley" ...

Tyler the Creator Kanye West -

Tyler Kanye Tyler Kanye Tyler 50 Kanye ...

Tyler The Creator CHROMAKOPIA -

Tyler ...

Tyler SafePal Fiat24 | ... -

2011 1 ...

-

2011 1 ...

Tyler, the Creator? -

Tyler, the Creator Mixtape "Wolf Haley" Tyler vocal

Tyler the Creator Kanye West -

Tyler Kanye Tyler Kanye Tyler 50 Kanye 3 Kanye 21 Kanye west

Tyler The Creator CHROMAKOPIA -

Tyler 2024-11-04 14:05

Tyler: SafePal Fiat24 | ... -

2011 1 ...

-

2011 1 ...

Tyler? -

Dec 27, 2019 · Tyler. :. :. :196925-72 198616-47

Tyler, The Creator IGOR -

Tyler, the Creator rap "Odd Future" mixtape Tyler ...

James Tyler? -

Aug 29, 2019 · james tyler james tyler james tyler james tyler

? -

...

APA- -

Dec 20, 2023 · APA APA APA

Discover how the Tyler Cusick Risk Assessment Calculator can streamline your risk evaluation process. Learn more about its features and benefits today!

[Back to Home](#)