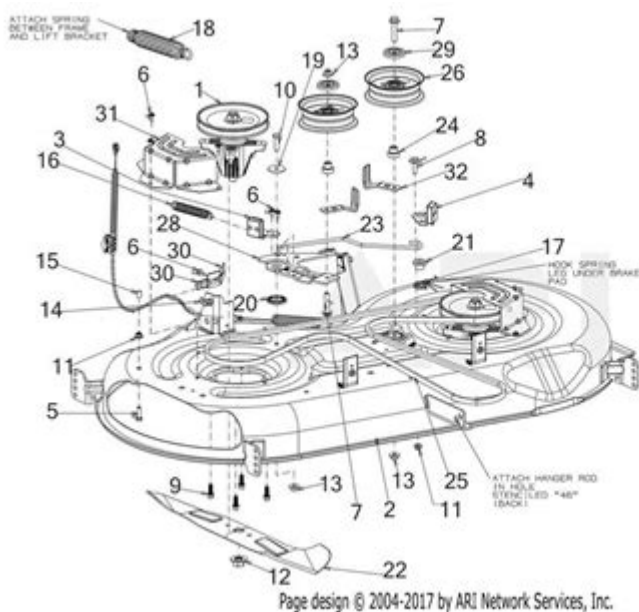


Troy Bilt Bronco Spring Diagram



TROY BILT BRONCO SPRING DIAGRAM IS AN ESSENTIAL TOOL FOR THOSE WHO OWN AND MAINTAIN A TROY BILT BRONCO TILLER. UNDERSTANDING THE SPRING DIAGRAM CAN GREATLY ASSIST USERS IN TROUBLESHOOTING ISSUES RELATED TO THE MACHINERY'S PERFORMANCE, ENSURING THAT IT OPERATES SMOOTHLY AND EFFICIENTLY. IN THIS ARTICLE, WE WILL DELVE INTO THE COMPONENTS OF THE SPRING DIAGRAM, ITS IMPORTANCE, AND HOW TO UTILIZE IT EFFECTIVELY FOR MAINTENANCE AND REPAIRS.

UNDERSTANDING THE TROY BILT BRONCO TILLER

THE TROY BILT BRONCO TILLER IS A POPULAR GARDENING TOOL KNOWN FOR ITS DURABILITY AND EASE OF USE. IT IS PARTICULARLY FAVORED BY HOMEOWNERS WHO MAINTAIN MEDIUM TO LARGE GARDENS. THE TILLER IS DESIGNED TO BREAK UP SOIL, PREPARE SEEDBEDS, AND CULTIVATE GARDENS EFFECTIVELY. SOME OF THE KEY FEATURES OF THE TROY BILT BRONCO INCLUDE:

- **POWERFUL ENGINE:** TYPICALLY EQUIPPED WITH A 5.5 HP ENGINE.
- **ADJUSTABLE TILLING WIDTH:** OFFERS VERSATILITY DEPENDING ON THE SIZE OF THE GARDEN.
- **ERGONOMIC DESIGN:** MAKES IT EASIER TO OPERATE AND MANEUVER.

HOWEVER, LIKE ALL MECHANICAL DEVICES, THE BRONCO TILLER MAY ENCOUNTER ISSUES OVER TIME. UNDERSTANDING THE SPRING DIAGRAM IS CRUCIAL FOR IDENTIFYING AND RESOLVING THESE ISSUES.

THE IMPORTANCE OF THE SPRING DIAGRAM

THE SPRING DIAGRAM OF THE TROY BILT BRONCO PROVIDES A VISUAL REPRESENTATION OF THE SPRING MECHANISMS WITHIN THE TILLER. THIS DIAGRAM IS VITAL FOR SEVERAL REASONS:

1. **MAINTENANCE AND REPAIRS:** IT ALLOWS OWNERS TO SEE HOW SPRINGS ARE POSITIONED AND HOW THEY FUNCTION WITHIN THE TILLER. THIS UNDERSTANDING IS ESSENTIAL FOR DIAGNOSING PROBLEMS SUCH AS POOR TILLING PERFORMANCE OR DIFFICULTY IN STARTING THE ENGINE.
2. **REPLACEMENT PARTS:** WHEN SPRINGS WEAR OUT OR BREAK, HAVING A DIAGRAM CAN HELP IN SOURCING THE CORRECT

REPLACEMENT PARTS. IT ENSURES THAT USERS PURCHASE THE RIGHT SPECIFICATIONS, AVOIDING COMPATIBILITY ISSUES.

3. ASSEMBLY AND DISASSEMBLY: IF USERS NEED TO DISASSEMBLE THEIR TILLER FOR REPAIRS OR MAINTENANCE, THE SPRING DIAGRAM CAN GUIDE THEM THROUGH THE PROCESS, ENSURING THAT ALL COMPONENTS ARE CORRECTLY REINSTALLED.

COMPONENTS OF THE SPRING DIAGRAM

TO FULLY UNDERSTAND THE SPRING DIAGRAM, IT'S IMPORTANT TO FAMILIARIZE YOURSELF WITH ITS COMPONENTS. HERE ARE SOME OF THE KEY ELEMENTS TYPICALLY REPRESENTED IN THE DIAGRAM:

1. TILLER DRIVE SYSTEM

THE DRIVE SYSTEM TRANSFERS POWER FROM THE ENGINE TO THE TINES. SPRINGS IN THIS SYSTEM HELP MAINTAIN TENSION AND PROVIDE NECESSARY SUPPORT FOR MOVEMENT.

2. CLUTCH AND BRAKE SPRINGS

THESE SPRINGS ARE RESPONSIBLE FOR ENGAGING AND DISENGAGING THE TILLER'S TINES. THEY ALLOW THE OPERATOR TO CONTROL THE TILLER'S OPERATION, MAKING IT EASIER TO MANEUVER.

3. DEPTH ADJUSTMENT SPRINGS

THESE SPRINGS ASSIST IN ADJUSTING THE DEPTH OF THE TILLER TINES. PROPER DEPTH ADJUSTMENT IS CRUCIAL FOR EFFECTIVE SOIL CULTIVATION.

4. ENGINE MOUNTING SPRINGS

THESE SPRINGS HELP ABSORB VIBRATIONS FROM THE ENGINE, ENSURING A SMOOTHER OPERATION AND PROLONGING THE LIFESPAN OF COMPONENTS.

HOW TO USE THE SPRING DIAGRAM FOR TROUBLESHOOTING

WHEN FACED WITH ISSUES RELATED TO YOUR TROY BILT BRONCO TILLER, THE SPRING DIAGRAM CAN SERVE AS A VALUABLE TOOL FOR TROUBLESHOOTING. HERE'S HOW TO EFFECTIVELY USE IT:

STEP 1: IDENTIFY THE PROBLEM

BEGIN BY OBSERVING THE SYMPTOMS YOUR TILLER IS EXHIBITING. COMMON ISSUES MAY INCLUDE:

- DIFFICULTY STARTING THE ENGINE.
- POOR TILLING PERFORMANCE.
- UNUSUAL NOISES DURING OPERATION.
- TILLER NOT MOVING OR ENGAGING PROPERLY.

STEP 2: REFER TO THE SPRING DIAGRAM

ONCE YOU HAVE IDENTIFIED THE SYMPTOMS, REFER TO THE SPRING DIAGRAM. LOOK FOR THE SPECIFIC SPRINGS ASSOCIATED WITH THE PROBLEM AREA. FOR EXAMPLE:

- IF THE TILLER IS NOT ENGAGING: CHECK THE CLUTCH AND BRAKE SPRINGS.
- IF THE TILLING DEPTH IS INCONSISTENT: INSPECT THE DEPTH ADJUSTMENT SPRINGS.

STEP 3: INSPECT THE SPRINGS

PHYSICALLY INSPECT THE SPRINGS IN QUESTION. LOOK FOR SIGNS OF WEAR, DAMAGE, OR DISLODGEEMENT. COMMON ISSUES INCLUDE:

- BROKEN OR STRETCHED SPRINGS.
- CORROSION OR RUST ON METAL COMPONENTS.
- MISALIGNMENT OF SPRINGS.

STEP 4: REPLACE OR REPAIR

BASED ON YOUR INSPECTION, DECIDE WHETHER YOU NEED TO REPAIR OR REPLACE THE SPRINGS. IF REPLACEMENT IS NECESSARY, USE THE DIAGRAM TO FIND THE CORRECT SPECIFICATIONS. KEEP IN MIND:

- ALWAYS PURCHASE OEM (ORIGINAL EQUIPMENT MANUFACTURER) PARTS FOR COMPATIBILITY.
- FOLLOW THE DIAGRAM TO ENSURE PROPER INSTALLATION.

STEP 5: TEST THE TILLER

AFTER MAKING REPAIRS OR REPLACEMENTS, TEST THE TILLER TO ENSURE THAT IT OPERATES SMOOTHLY. CHECK FOR ANY REMAINING ISSUES AND MAKE ADJUSTMENTS AS NEEDED.

COMMON SPRING-RELATED ISSUES WITH THE TROY BILT BRONCO

HERE ARE SOME COMMON ISSUES RELATED TO SPRINGS THAT TROY BILT BRONCO USERS MIGHT ENCOUNTER:

- CLUTCH FAILING TO ENGAGE: THIS CAN OFTEN BE TRACED BACK TO WORN CLUTCH SPRINGS. IF THESE SPRINGS LOSE TENSION, THEY MAY NOT ENGAGE THE TINES PROPERLY.
- DIFFICULTY ADJUSTING TILLING DEPTH: IF DEPTH ADJUSTMENT SPRINGS ARE FAULTY, USERS MAY FIND IT CHALLENGING TO SET THE DESIRED TILLING DEPTH.
- ENGINE VIBRATION PROBLEMS: IF THE ENGINE MOUNTING SPRINGS ARE WORN OR DAMAGED, USERS MIGHT EXPERIENCE INCREASED VIBRATION, WHICH CAN AFFECT PERFORMANCE AND LEAD TO FURTHER MECHANICAL ISSUES.

MAINTENANCE TIPS FOR THE TROY BILT BRONCO

REGULAR MAINTENANCE CAN HELP PREVENT SPRING-RELATED ISSUES AND PROLONG THE LIFE OF YOUR TILLER. HERE ARE SOME ESSENTIAL MAINTENANCE TIPS:

1. **REGULAR CLEANING:** CLEAN THE TILLER AFTER EACH USE TO REMOVE DIRT AND DEBRIS.
2. **INSPECT SPRINGS PERIODICALLY:** CHECK SPRINGS FOR WEAR OR DAMAGE DURING ROUTINE MAINTENANCE.
3. **LUBRICATION:** ENSURE THAT ALL MOVING PARTS ARE WELL-LUBRICATED TO REDUCE FRICTION AND WEAR.
4. **FOLLOW MANUFACTURER GUIDELINES:** ALWAYS ADHERE TO THE MAINTENANCE SCHEDULE RECOMMENDED BY TROY BILT.
5. **STORE PROPERLY:** STORE THE TILLER IN A DRY PLACE TO PREVENT RUST AND CORROSION, ESPECIALLY ON THE SPRINGS.

CONCLUSION

UNDERSTANDING THE **TROY BILT BRONCO SPRING DIAGRAM** IS INVALUABLE FOR ANY OWNER OF THIS VERSATILE TILLER. BY FAMILIARIZING YOURSELF WITH THE COMPONENTS AND FUNCTIONS OF THE SPRINGS, YOU CAN EFFECTIVELY DIAGNOSE AND TROUBLESHOOT ISSUES, ENSURING THAT YOUR TILLER REMAINS IN OPTIMAL WORKING CONDITION. REGULAR MAINTENANCE, COMBINED WITH A GOOD UNDERSTANDING OF THE SPRING DIAGRAM, WILL NOT ONLY ENHANCE THE PERFORMANCE OF YOUR TROY BILT BRONCO BUT ALSO EXTEND ITS LIFESPAN, MAKING IT A RELIABLE TOOL FOR ALL YOUR GARDENING NEEDS.

FREQUENTLY ASKED QUESTIONS

WHAT IS A TROY-BILT BRONCO SPRING DIAGRAM USED FOR?

THE TROY-BILT BRONCO SPRING DIAGRAM IS USED TO ILLUSTRATE THE PLACEMENT AND FUNCTION OF THE SPRINGS IN THE LAWN MOWER'S ASSEMBLY, HELPING WITH MAINTENANCE AND REPAIRS.

WHERE CAN I FIND A TROY-BILT BRONCO SPRING DIAGRAM?

YOU CAN FIND THE TROY-BILT BRONCO SPRING DIAGRAM IN THE USER MANUAL, ON THE OFFICIAL TROY-BILT WEBSITE, OR THROUGH VARIOUS ONLINE FORUMS AND REPAIR WEBSITES.

WHAT TYPES OF SPRINGS ARE TYPICALLY SHOWN IN THE TROY-BILT BRONCO SPRING DIAGRAM?

THE DIAGRAM TYPICALLY SHOWS THE DRIVE SPRINGS, TENSION SPRINGS, AND ANY OTHER RELEVANT COMPONENTS THAT AFFECT THE MOWER'S OPERATION.

HOW DO I INTERPRET THE TROY-BILT BRONCO SPRING DIAGRAM?

TO INTERPRET THE DIAGRAM, FOLLOW THE LABELED PARTS AND CONNECTIONS, ENSURING YOU UNDERSTAND HOW EACH SPRING INTERACTS WITH OTHER COMPONENTS IN THE MOWER.

CAN I REPAIR MY TROY-BILT BRONCO USING JUST THE SPRING DIAGRAM?

WHILE THE SPRING DIAGRAM IS A HELPFUL GUIDE, IT'S BEST USED IN CONJUNCTION WITH THE COMPLETE SERVICE MANUAL AND OTHER REPAIR RESOURCES FOR THOROUGH UNDERSTANDING.

ARE THERE ANY COMMON ISSUES RELATED TO THE SPRINGS IN THE TROY-BILT BRONCO?

YES, COMMON ISSUES INCLUDE BROKEN OR STRETCHED SPRINGS, WHICH CAN AFFECT THE MOWER'S PERFORMANCE AND MAY REQUIRE REPLACEMENT AS INDICATED IN THE SPRING DIAGRAM.

IS IT NECESSARY TO REFER TO THE SPRING DIAGRAM FOR ROUTINE MAINTENANCE?

WHILE IT IS NOT STRICTLY NECESSARY FOR ROUTINE MAINTENANCE, REFERRING TO THE SPRING DIAGRAM CAN HELP ENSURE THAT ALL PARTS ARE CORRECTLY ADJUSTED AND FUNCTIONING PROPERLY.

WHAT TOOLS DO I NEED TO FOLLOW THE TROY-BILT BRONCO SPRING DIAGRAM FOR REPAIRS?

YOU WILL TYPICALLY NEED BASIC HAND TOOLS LIKE WRENCHES, SCREWDRIVERS, AND PLIERS, ALONG WITH SAFETY GEAR WHEN FOLLOWING THE SPRING DIAGRAM FOR REPAIRS.

Find other PDF article:

<https://soc.up.edu.ph/36-tag/files?ID=ApL20-1859&title=language-by-brent-faiyaz.pdf>

Troy Bilt Bronco Spring Diagram

Troy - Wikipedia

It is best known as the setting for the Greek myth of the Trojan War. The archaeological site is open to the public as a tourist destination, and was added to the UNESCO World Heritage list in 1998. Troy was repeatedly destroyed and rebuilt during its 4000 years of occupation.

Troy (2004) - IMDb

May 14, 2004 · Troy: Directed by Wolfgang Petersen. With Julian Glover, Brian Cox, Nathan Jones, Adoni Maropis. An adaptation of Homer's great epic, the film follows the assault on Troy by the united Greek forces.

Where Was Troy And What Happened To It? - WorldAtlas

Oct 13, 2022 · Troy was an ancient Bronze Age city located in modern-day Turkey. It was also the legendary setting for Homer's epic poems, the Iliad and the Odyssey, mentioned in the introduction. The city of Troy was strategically positioned between the Mediterranean Sea and the civilizations to the East.

Troy streaming: where to watch movie online? - JustWatch

Find out how and where to watch "Troy" online on Netflix, Prime Video, and Disney+ today - including 4K and free options.

Troy (film) - Wikipedia

Troy is a 2004 epic historical action film directed by Wolfgang Petersen and written by David Benioff.

Troy (2004) - Full cast & crew - IMDb

Troy (2004) - Cast and crew credits, including actors, actresses, directors, writers and more.

Trojan War - Wikipedia

The war was waged by the Achaeans (Greeks) against the city of Troy after Paris of Troy took Helen from her husband Menelaus, king of Sparta. The war is one of the most important events in Greek mythology, and it has been narrated through many works of ...

[Home | Troy Life & Fire Safety Ltd.](#)

Troy Life & Fire Safety Ltd. is one of the largest suppliers of Fire Alarm, Fire Suppression, Security, Nurse call and Communications Systems in Canada. As an Edwards Authorized ...

Troy - Prime Video

Based on the epic poem The Iliad by Homer.

Troy Apple Premium Partner | Troyestore

Uzman ekiplerden teknik destek alın Apple ürünleriniz için destek yetkili servis Troy'da! Hemen randevunuzu oluşturup teknik servis hizmeti alın.

Troy - Wikipedia

It is best known as the setting for the Greek myth of the Trojan War. The archaeological site is open to the public as a tourist destination, and was added to the UNESCO World Heritage list ...

Troy (2004) - IMDb

May 14, 2004 · Troy: Directed by Wolfgang Petersen. With Julian Glover, Brian Cox, Nathan Jones, Adoni Maropis. An adaptation of Homer's great epic, the film follows the assault on ...

Where Was Troy And What Happened To It? - WorldAtlas

Oct 13, 2022 · Troy was an ancient Bronze Age city located in modern-day Turkey. It was also the legendary setting for Homer's epic poems, the Iliad and the Odyssey, mentioned in the ...

Troy streaming: where to watch movie online? - JustWatch

Find out how and where to watch "Troy" online on Netflix, Prime Video, and Disney+ today - including 4K and free options.

Troy (film) - Wikipedia

Troy is a 2004 epic historical action film directed by Wolfgang Petersen and written by David Benioff.

Troy (2004) - Full cast & crew - IMDb

Troy (2004) - Cast and crew credits, including actors, actresses, directors, writers and more.

Trojan War - Wikipedia

The war was waged by the Achaeans (Greeks) against the city of Troy after Paris of Troy took Helen from her husband Menelaus, king of Sparta. The war is one of the most important ...

[Home | Troy Life & Fire Safety Ltd.](#)

Troy Life & Fire Safety Ltd. is one of the largest suppliers of Fire Alarm, Fire Suppression, Security, Nurse call and Communications Systems in Canada. As an Edwards Authorized ...

Troy - Prime Video

Based on the epic poem The Iliad by Homer.

Troy Apple Premium Partner | Troyestore

Uzman ekiplerden teknik destek alın Apple ürünleriniz için destek yetkili servis Troy'da! Hemen randevunuzu oluşturup teknik servis hizmeti alın.

Discover the essential Troy Bilt Bronco spring diagram to keep your mower running smoothly. Learn more about maintenance tips and troubleshooting today!

[Back to Home](#)