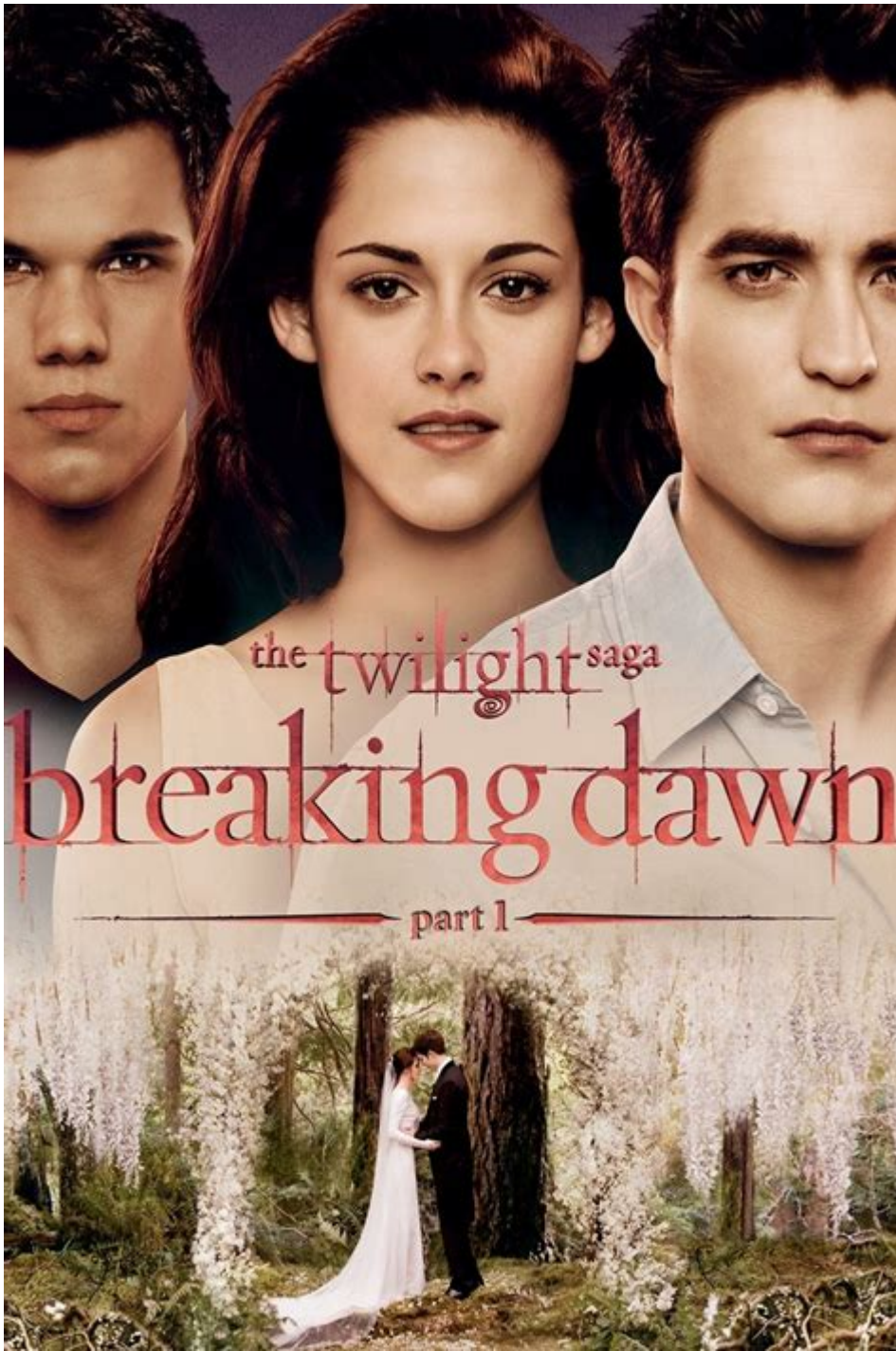


Twilight Breaking Dawn Part 1 Full



Twilight Breaking Dawn Part 1 Full is the first installment of the two-part adaptation of Stephenie Meyer's fourth and final novel in the beloved Twilight series. Released in 2011, the film follows the tumultuous journey of Bella Swan and Edward Cullen as they navigate the complexities of love, marriage, and the supernatural world. Directed by Bill Condon, this installment sets the stage for the dramatic conclusion of the saga, capturing both the romance and the underlying tensions that have characterized the series from the beginning.

Plot Summary

The story picks up where "Eclipse" leaves off, with Bella Swan (Kristen Stewart) and Edward Cullen (Robert Pattinson) preparing for their wedding. The film delves into themes of love, sacrifice, and the desire for a normal life amidst the chaos of the supernatural. Here's a breakdown of the key plot points:

The Wedding

The film opens with the much-anticipated wedding of Bella and Edward, set in a picturesque forest location. The event is both magical and emotional, featuring:

- Bella's stunning wedding dress designed by Alice Cullen (Ashley Greene).
- The attendance of family and friends, including Jacob Black (Taylor Lautner), who struggles with his feelings for Bella.
- The touching vows exchanged between Bella and Edward, symbolizing their commitment to one another.

After the wedding, the couple embarks on their honeymoon to a private island in Brazil, where they seek to enjoy their first days as husband and wife.

The Honeymoon

During their honeymoon, Bella and Edward confront their physical desires, leading to an intimate encounter that has significant implications. Notably:

- Their honeymoon is marked by passion and the challenges of Bella's humanity in contrast to Edward's vampiric nature.
- Bella's desire for a family becomes apparent, raising concerns for Edward, who fears for her safety during conception.

The honeymoon takes a dark turn when Bella discovers she is pregnant, a situation that poses grave dangers due to the nature of the unborn child.

The Pregnancy

Bella's pregnancy is a central theme of the film, and it is portrayed as both miraculous and terrifying. As the pregnancy progresses, Bella's health deteriorates, leading to a series of challenges:

Physical and Emotional Struggles

- Bella experiences rapid weight gain and physical pain due to the unnatural growth of the fetus.

- The Cullen family, who initially support Bella, becomes increasingly alarmed about the risks associated with the pregnancy.
- Jacob serves as a counterpoint, fearing for Bella's life and urging her to terminate the pregnancy.

The tension between the characters intensifies as they grapple with the implications of the child, whom they later learn is part vampire and part human.

The Transformation of Relationships

The pregnancy strains Bella's relationships, particularly with Edward and Jacob. Key dynamics include:

- Edward's protective instincts clash with Jacob's determination to keep Bella safe.
- The growing bond between Jacob and Bella, as he becomes her confidant and ally against the dangers posed by the pregnancy.
- The emotional toll on Bella as she navigates the conflicting feelings of motherhood and her desire to remain human.

Climactic Moments

The film builds to several climactic moments that set the stage for the series' conclusion. Notable events include:

Labor and Delivery

Bella's labor is depicted as harrowing and intense, showcasing her determination to bring the child into the world despite the risks involved. Key moments include:

- The surreal and painful experience of Bella giving birth to Renesmee.
- Edward's desperate attempts to save Bella, leading him to make an irreversible decision.

The Transformation

In a moment of crisis, Bella's transformation into a vampire is crucial. This transformation is portrayed as both a salvation and a loss of her humanity. The process includes:

- Edward injecting Bella with his venom to save her life.
- The dramatic transformation scenes highlighting Bella's awakening as a vampire.

Character Development

Throughout "Breaking Dawn Part 1," character development is crucial in shaping the narrative and emotional depth of the story. Key characters undergo significant changes:

Bella Swan

Bella's evolution from a human girl to a vampire mother marks a pivotal transformation. Key aspects include:

- Her newfound strength and abilities as a vampire.
- The challenges of motherhood intertwined with her vampire identity.
- Bella's struggle to maintain her humanity while embracing her new life.

Edward Cullen

Edward's character is deeply affected by the events of the film:

- His protective nature intensifies as he faces the prospect of losing Bella.
- The film explores his emotional vulnerability and fears surrounding fatherhood.

Jacob Black

Jacob serves as a critical foil to Edward's character:

- His internal conflict between love for Bella and loyalty to his pack highlights the complexities of their relationships.
- Jacob's imprinting on Renesmee at the film's conclusion introduces a new dynamic and sets the stage for the next film.

Thematic Elements

"Breaking Dawn Part 1" delves into various themes that resonate throughout the Twilight saga. Key themes include:

Love and Sacrifice

The film emphasizes the lengths to which the characters will go to protect their loved ones. Bella's willingness to risk everything for her child showcases the theme of maternal love.

Identity and Transformation

The struggle between human and vampire identity is central to the narrative. Bella's transformation forces her to confront her new reality and redefine her relationships.

Family and Belonging

The importance of family is highlighted through the Cullen clan's support of Bella. The film underscores the idea that family can take many forms, transcending biological connections.

Conclusion

"Twilight Breaking Dawn Part 1" serves as a compelling exploration of love, sacrifice, and the supernatural. It successfully sets the stage for the final chapter of the series, leaving audiences eager for the conclusion of Bella and Edward's journey. With its blend of romance, drama, and action, the film resonates with fans of the series while introducing new layers to the beloved characters. As the saga reaches its climax, "Breaking Dawn Part 1" stands out as a significant installment that captures the essence of the Twilight phenomenon.

Frequently Asked Questions

What is the main plot of Twilight: Breaking Dawn Part 1?

The main plot revolves around Bella and Edward's wedding, their honeymoon, and the complications that arise when Bella becomes pregnant with a half-vampire, half-human child.

Who directed Twilight: Breaking Dawn Part 1?

Twilight: Breaking Dawn Part 1 was directed by Bill Condon.

What are the major themes explored in Twilight: Breaking Dawn Part 1?

Major themes include love, sacrifice, the challenges of motherhood, and the conflicts between different supernatural factions.

How does Bella's character evolve in Twilight: Breaking Dawn Part 1?

Bella evolves from a cautious and uncertain young woman into a more determined and mature individual as she navigates the complexities of love, marriage, and impending motherhood.

What challenges does Bella face during her pregnancy in Twilight: Breaking Dawn Part 1?

Bella faces significant physical and emotional challenges during her pregnancy, including extreme pain, rapid growth of the fetus, and the fear of its potential dangers to her life.

What role do the Cullen family play in Twilight: Breaking Dawn Part 1?

The Cullen family plays a protective role, supporting Bella through her pregnancy while also dealing with the tensions arising from the arrival of the Volturi, who are concerned about the implications of her half-vampire child.

What is the significance of the title 'Breaking Dawn'?

The title 'Breaking Dawn' signifies the transition into a new life phase for Bella as she prepares for motherhood and the transformation of her identity, as well as the dawn of new challenges and conflicts for the characters.

Find other PDF article:

<https://soc.up.edu.ph/59-cover/Book?ID=FnR12-9389&title=the-first-thanksgiving-worksheets.pdf>

Twilight Breaking Dawn Part 1 Full

Twilight -

Nov 21, 2008 · Kristen Stewart ...

The Twilight Saga: Breaking Dawn - Part 1

Nov 18, 2011 · Kristen Stewart ...

The Twilight Saga: Breaking Dawn - Part 2

Nov 16, 2012 · Kristen Stewart Robert Pattinson ...

()

Sep 19, 2024 · Twilight of the Gods (2024) ...

() ()

The Twilight Zone ...

()

Jun 22, 2011 · **Исполнители:** Angelina Nikonova **Исполнители:** Olga Dihovichnaya / Sergei Borisov / Sergeu Goludov **Исполнители:** / **Исполнители:** **Исполнители:** ...

□□□□ The Twilight Zone - □□□□

[illegible]

□□□□□□ (□□)

[illegible]



□□□□2□□□ *The Twilight Saga: New Moon*

Nov 20, 2009 · [The Twilight Saga: New Moon](#) + [Twilight](#) + Teenage Love + [Twilight](#) = [Twilight](#) ...

3000 (00) - 0000

Jun 30, 2010 · [Kristen Stewart](#) [Robert Pattinson](#) ...

□□□□ Twilight - □□□□

Nov 21, 2008 ·  Kristen Stewart  ...

4 (i) The Twilight Saga: Breaking Dawn - Part 1

[illegible]

□□□4□□ (□) *The Twilight Saga: Breaking Dawn - Part 2*

Nov 16, 2012 · [Kristen Stewart](#) [Robert Pattinson](#) ...

□□□□ (□□)

Sep 19, 2024 · Twilight of the Gods (2024) 00: 00.000 / 00.000 / 00.00 / 00.0000 / 00.000 00: 00.0000 / 00.000 / 00.000 00: 0000 ...

□□□□ (□□) □□□□ (□□)

The Twilight Zone

□□□□ (□□)

Jun 22, 2011 · 00: 0000·0000 00: Angelina Nikonova 00: Olga Dihovichnaya / Sergei Borisov / Sergeu Goludov 00: 00 / 00 0000/00: 000 00: 00 0000: ...

□□□□ The Twilight Zone - □□□□

Sep 18, 2002 · 1983 ...

□□□□□□ (□□)

[illegible]

Nov 2009 The Twilight Saga: New Moon

Nov 20, 2009 · The Twilight Saga: New Moon + + Teenage Love + =
Twilight ...

Jun 30 2010 () -

Jun 30, 2010 · Kristen Stewart • Robert Pattinson
 ...

Experience the magic of 'Twilight: Breaking Dawn Part 1' in full. Dive into the plot

[Back to Home](#)