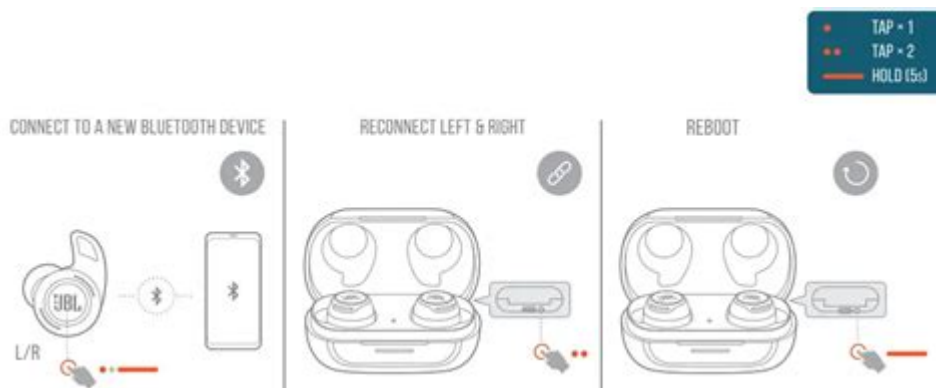


Turn It Up Wireless Earbuds Manual



Turn It Up Wireless Earbuds Manual

Wireless earbuds have revolutionized the way we listen to music, take calls, and enjoy audio content on the go. Among the many brands available, Turn It Up wireless earbuds stand out for their quality, comfort, and innovative features. This comprehensive manual provides an overview of the Turn It Up wireless earbuds, including setup instructions, troubleshooting tips, and care recommendations to ensure you get the most out of your devices.

Overview of Turn It Up Wireless Earbuds

The Turn It Up wireless earbuds are designed to deliver high-quality sound in a compact form. These earbuds are equipped with advanced Bluetooth technology, making them compatible with a wide range of devices, including smartphones, tablets, and laptops. With a focus on user-friendliness and performance, the Turn It Up earbuds boast features such as:

- Active Noise Cancellation: Minimizes background noise for an immersive listening experience.
- Touch Controls: Easily manage calls and music playback with intuitive touch-sensitive controls.
- Long Battery Life: Enjoy hours of playback time on a single charge, with a portable charging case for convenience.
- Comfort Fit Design: Multiple ear tip sizes ensure a secure and comfortable fit for extended use.

Getting Started with Your Turn It Up Wireless Earbuds

Setting up your Turn It Up wireless earbuds is a straightforward process. Follow these steps to get started:

1. Unboxing

When you receive your Turn It Up wireless earbuds, carefully unbox the package. Inside, you should find:

- The wireless earbuds
- Charging case
- USB charging cable
- User manual
- Extra ear tips (various sizes)

2. Charging the Earbuds

Before using your earbuds for the first time, it is essential to charge them fully. To do this:

1. Place the earbuds into the charging case.
2. Connect the USB charging cable to the case and plug it into a power source.
3. Allow the earbuds to charge for approximately 1.5 to 2 hours until the LED indicators show a steady light.

3. Pairing with Your Device

Once charged, you can pair the Turn It Up wireless earbuds with your smartphone or other Bluetooth-enabled devices:

1. Remove the earbuds from the charging case. They will automatically enter pairing mode.
2. On your device, navigate to the Bluetooth settings.
3. Look for "Turn It Up Earbuds" in the list of available devices.
4. Select the earbuds to establish the connection.
5. Once paired, you will hear a confirmation sound in the earbuds.

Using Your Turn It Up Wireless Earbuds

The Turn It Up wireless earbuds offer a variety of features that enhance your listening experience. Familiarize yourself with the touch controls and additional functionalities.

Touch Controls

The earbuds come equipped with touch-sensitive controls for easy management of calls and music:

- Play/Pause: Tap once on either earbud.
- Next Track: Double-tap the right earbud.
- Previous Track: Double-tap the left earbud.
- Answer/End Call: Tap once on either earbud.
- Reject Call: Press and hold either earbud for 2 seconds.

Active Noise Cancellation

To activate the active noise cancellation feature:

1. Ensure the earbuds are connected to your device.
2. Press and hold the right earbud for 3 seconds to toggle noise cancellation on or off.

This feature is especially useful in noisy environments, allowing you to enjoy your music or podcasts without distractions.

Battery Life and Charging

The Turn It Up wireless earbuds provide impressive battery life. Here's a breakdown of the usage and charging process:

- Playback Time: Up to 6 hours on a single charge.
- Charging Case: Provides an additional 18 hours of battery life.
- Charging Method: Place the earbuds in the charging case, which can be charged using the included USB cable.

To extend battery life, be sure to store your earbuds in the charging case when not in use.

Troubleshooting Common Issues

While Turn It Up wireless earbuds are designed to function seamlessly, you may encounter some issues. Below are common problems and their solutions:

1. Earbuds Won't Connect

If your earbuds do not connect to your device:

- Ensure that the earbuds are charged.
- Make sure Bluetooth is enabled on your device.
- Remove the earbuds from the charging case and try pairing again.
- Restart your device and attempt to pair once more.

2. Poor Sound Quality

If you experience audio issues:

- Check the battery level of the earbuds.
- Ensure a proper fit in your ears, which can affect sound quality.
- Clean the ear tips and speaker mesh to remove any debris.
- Check your device's audio settings for any equalizer adjustments.

3. One Earbud Not Working

If one earbud is not functioning:

- Ensure both earbuds are charged.
- Try resetting the earbuds by placing them back in the charging case and removing them again.
- Re-pair the earbuds with your device to see if the issue persists.

Maintenance and Care

Proper care and maintenance can prolong the life of your Turn It Up wireless earbuds:

- **Cleaning:** Regularly clean the earbuds using a soft, dry cloth. Avoid using water or cleaning solutions that can damage the components.
- **Storage:** Always keep the earbuds in the charging case when not in use to protect them from dust and damage.
- **Avoid Extreme Temperatures:** Store the earbuds in a cool, dry place to prevent overheating or moisture damage.

Conclusion

Turn It Up wireless earbuds are an excellent choice for anyone looking for reliable, high-quality audio on the go. By following this manual, you can ensure a smooth setup, effective use, and proper maintenance of your earbuds. With their advanced features and user-friendly design, you can enjoy your favorite music and podcasts with ease. Whether you are commuting, working out, or simply relaxing at home, the Turn It Up wireless earbuds will enhance your listening experience.

Frequently Asked Questions

What is included in the 'Turn It Up' wireless earbuds manual?

The manual typically includes information on product features, setup instructions, charging guidelines, troubleshooting tips, and warranty information.

How do I pair my 'Turn It Up' wireless earbuds with my device?

To pair, turn on the earbuds by pressing the power button, then enable Bluetooth on your device, search for available devices, and select 'Turn It Up' from the list.

What should I do if my 'Turn It Up' wireless earbuds won't charge?

Check the charging cable and port for debris, ensure the power source is functioning, and try using a different charging cable. If the issue persists, refer to the troubleshooting section of the manual.

How can I reset my 'Turn It Up' wireless earbuds?

To reset the earbuds, press and hold the power button for about 10 seconds until you see the LED indicator flash red and blue, indicating a successful reset.

Are the 'Turn It Up' wireless earbuds water-resistant?

Refer to the manual for specific water resistance ratings; many models may offer some level of water resistance, but it's best to check for details.

What is the battery life of the 'Turn It Up' wireless earbuds?

The manual typically specifies the battery life, which can range from 4 to 8 hours of playtime on a single charge, depending on usage.

Can I use 'Turn It Up' wireless earbuds while exercising?

Yes, many users find them suitable for exercise, but it's important to check the manual for any specific recommendations regarding use during physical activities.

How do I update the firmware of my 'Turn It Up' wireless earbuds?

Firmware updates can usually be done through the manufacturer's app or software; consult the manual for step-by-step instructions.

What should I do if I experience connectivity issues with my 'Turn It Up' wireless earbuds?

Try turning off Bluetooth on your device and then turning it back on, ensure the earbuds are charged, and refer to the manual for additional troubleshooting steps.

Find other PDF article:

<https://soc.up.edu.ph/47-print/pdf?dataid=aWg82-1172&title=polar-bear-worksheets-kindergarten.pdf>

[Turn It Up Wireless Earbuds Manual](#)

turn off, turn on, turn down, turn up

Dec 24, 2023 · turn off turn on turn down turn up 1 turn off ['tʃ:n ɒf] The light's a bit too harsh. ...

Turn Windows Features On or Off in Windows 10 | Tutorials

Jul 3, 2021 · After you turn off a feature, you can turn it back on at any time. This tutorial will show you how to turn Windows features on or off for all users in Windows 10. You must be signed in ...

[remove trending searches Solved - Windows 10 Forums](#)

07 Nov 2022 #2 alexhob123 said: how do I remove trending searches on type here to search don't want to see them Turn On or Off Search online and include web results in Windows 10 It ...

Enable or Disable Access to Windows Features in Windows 10

Nov 29, 2017 · The Windows Features dialog allows you to turn on and off features in Windows 10. This tutorial will show you how to enable or disable access to Windows Features for ...

Enable or Disable Windows Update Automatic Updates in ...

Dec 17, 2023 · This tutorial will show you how to enable or disable automatic updates in Windows Update for all users in Windows 10.

Enable or Disable Toolbars on Taskbar in Windows | Tutorials

Oct 17, 2020 · How to Enable or Disable Toolbars on Taskbar in Windows Windows includes a special application desktop toolbar called the taskbar that shows on the bottom of a display ...

Enable or Disable Windows Security in Windows 10 | Tutorials

Nov 1, 2022 · The Windows Security app uses the Windows Security Service (SecurityHealthService or Windows Security Health Service), which in turn utilizes the Security ...

Turn On or Off Sync Settings for Microsoft Account in Windows 10

Oct 5, 2024 · If you turn on Other Windows settings, Windows syncs some device settings (for things like printers and mouse options), File Explorer settings, and notification preferences. ...

How to Turn On or Off Microsoft Defender Firewall in Windows 10

Oct 6, 2020 · How to Turn On or Off Microsoft Defender Firewall in Windows 10 Starting with Windows 10 build 16193, Windows Firewall has been renamed to Windows Defender Firewall, ...

Enable or Disable Passwordless Sign-in for Microsoft Accounts

Jan 2, 2024 · How to Enable or Disable Passwordless Sign-in for Microsoft Accounts in Windows 10 Windows Hello is a more personal, more secure way to get instant access to your Windows ...

turn off, turn on, turn down, turn up

Dec 24, 2023 · turn off turn on turn down turn up 1 turn off ['t3:n nf] The light's a bit too harsh. ...

Turn Windows Features On or Off in Windows 10 | Tutorials

Jul 3, 2021 · After you turn off a feature, you can turn it back on at any time. This tutorial will show you how to turn Windows features on or off for all users in Windows 10. You must be signed in ...

remove trending searches Solved - Windows 10 Forums

07 Nov 2022 #2 alexhob123 said: how do I remove trending searches on type here to search don't want to see them Turn On or Off Search online and include web results in Windows 10 It ...

Enable or Disable Access to Windows Features in Windows 10

Nov 29, 2017 · The Windows Features dialog allows you to turn on and off features in Windows 10. This tutorial will show you how to enable or disable access to Windows Features for ...

Enable or Disable Windows Update Automatic Updates in ...

Dec 17, 2023 · This tutorial will show you how to enable or disable automatic updates in Windows Update for all users in Windows 10.

Enable or Disable Toolbars on Taskbar in Windows | Tutorials

Oct 17, 2020 · How to Enable or Disable Toolbars on Taskbar in Windows Windows includes a special application desktop toolbar called the taskbar that shows on the bottom of a display ...

Enable or Disable Windows Security in Windows 10 | Tutorials

Nov 1, 2022 · The Windows Security app uses the Windows Security Service (SecurityHealthService or Windows Security Health Service), which in turn utilizes the Security ...

Turn On or Off Sync Settings for Microsoft Account in Windows 10

Oct 5, 2024 · If you turn on Other Windows settings, Windows syncs some device settings (for things like printers and mouse options), File Explorer settings, and notification preferences. ...

How to Turn On or Off Microsoft Defender Firewall in Windows 10

Oct 6, 2020 · How to Turn On or Off Microsoft Defender Firewall in Windows 10 Starting with Windows 10 build 16193, Windows Firewall has been renamed to Windows Defender Firewall, ...

Enable or Disable Passwordless Sign-in for Microsoft Accounts

Jan 2, 2024 · How to Enable or Disable Passwordless Sign-in for Microsoft Accounts in Windows 10 Windows Hello is a more personal, more secure way to get instant access to your Windows ...

Discover how to maximize your experience with the Turn It Up wireless earbuds manual. Get tips

[Back to Home](#)