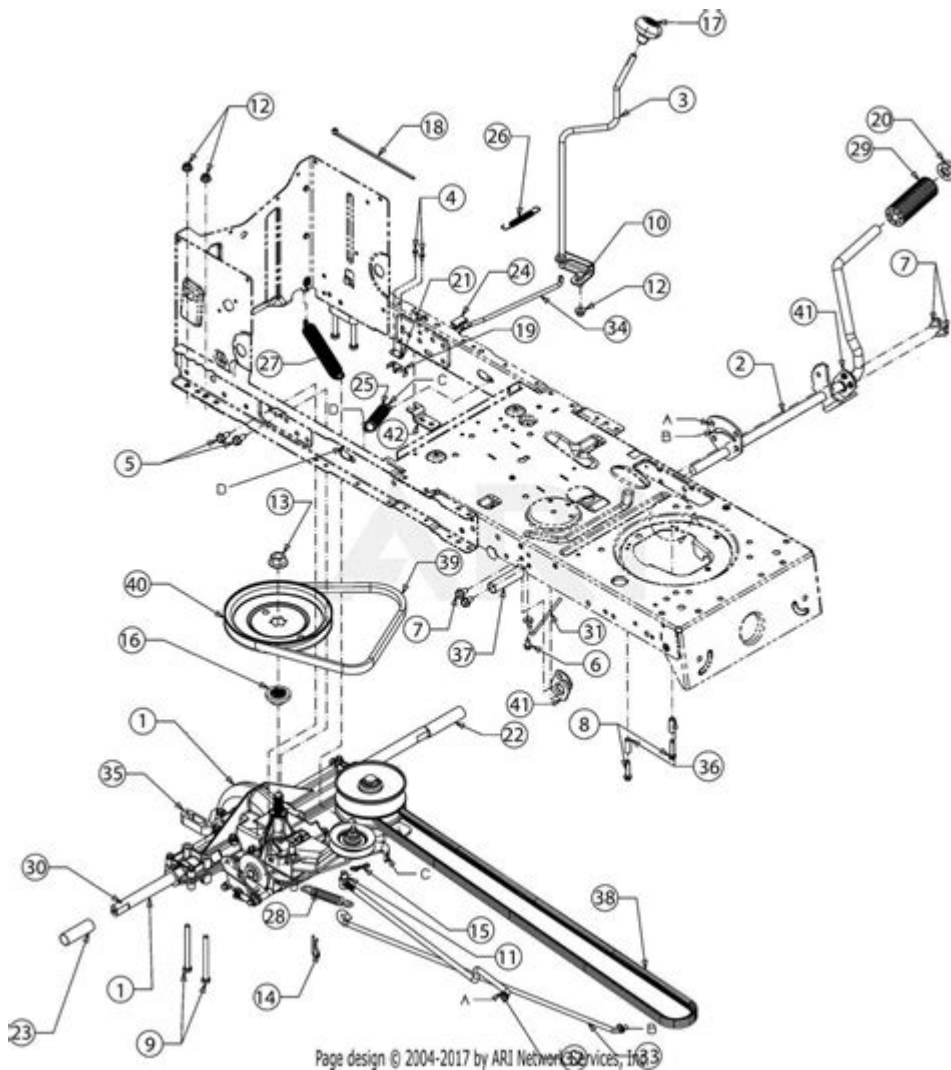


Troy Bilt Pony Transmission Belt Diagram



Troy Bilt Pony transmission belt diagram is an essential aspect for any owner of this popular garden tractor. Understanding the configuration and routing of the transmission belt can significantly affect the performance and longevity of your machine. In this article, we will delve into the details of the Troy Bilt Pony transmission belt, including its purpose, how to read the diagram, steps for replacement, and maintenance tips to ensure optimal operation.

Understanding the Transmission Belt

The transmission belt in the Troy Bilt Pony plays a crucial role in transferring power from the engine to the wheels, enabling the machine to move effectively. This belt is a vital component in the overall functioning of the tractor, and knowing how it works can help users troubleshoot issues or perform maintenance effectively.

Function of the Transmission Belt

The transmission belt serves several functions, including:

1. **Power Transfer:** It transmits power from the engine to the transmission, allowing the tractor to move.
2. **Speed Control:** The belt helps in regulating the speed of the tractor, adjusting to different terrains efficiently.
3. **Torque Management:** It manages the torque that is transferred, ensuring that the right amount of power is delivered to the wheels.

Common Issues with the Transmission Belt

Understanding common problems can help users identify issues early. Common transmission belt issues include:

- **Wear and Tear:** Over time, belts can wear out, leading to slipping or breaking.
- **Incorrect Installation:** If the belt is not installed correctly, it can cause improper functioning.
- **Misalignment:** Misalignment can lead to premature wear and decreased performance.

Interpreting the Troy Bilt Pony Transmission Belt Diagram

The Troy Bilt Pony transmission belt diagram is a visual representation of how the belt should be routed through the various pulleys in the system. Understanding this diagram is crucial for anyone looking to replace or adjust the belt.

Components of the Diagram

When looking at the diagram, you'll typically see several components:

1. **Pulleys:** The circular components that the belt wraps around, which help transfer motion.
2. **Belt Routing:** The path the belt takes as it weaves through the pulleys.
3. **Tensioners:** These components maintain the necessary tension on the belt to prevent slipping.
4. **Idler Pulleys:** These are additional pulleys that help guide the belt and maintain proper tension.

How to Read the Diagram

- **Follow the Lines:** The diagram will have lines indicating the path of the belt. Follow these lines to understand how the belt should be routed.
- **Identify Components:** Familiarize yourself with the different components labeled in the diagram to know where each part fits.

- Check for Annotations: Diagrams often include notes about specific adjustments or maintenance tips.

Steps for Replacing the Transmission Belt

Replacing the transmission belt on a Troy Bilt Pony can seem daunting, but with the right tools and knowledge, it can be accomplished effectively. Here's a step-by-step guide:

Tools and Materials Needed

- New transmission belt (ensure it's the correct size)
- Wrench set
- Screwdrivers (flathead and Phillips)
- Pliers
- Safety gloves
- Safety goggles

Step-by-Step Replacement Process

1. Safety First: Ensure the tractor is turned off and has cooled down. Disconnect the battery to avoid accidental starts.
2. Remove the Deck: If applicable, remove the mower deck to access the belt. This usually involves unbolting several screws and disconnecting the drive belt.
3. Locate the Transmission Belt: Use the diagram to find the transmission belt's location. This will typically be near the rear of the tractor.
4. Release Tension: Use a wrench to loosen the tensioner pulley, allowing for slack in the belt.
5. Remove the Old Belt: Carefully slide the old belt off the pulleys. Take note of how it was routed for reference.
6. Install the New Belt: Route the new belt through the pulleys according to the transmission belt diagram. Make sure it is seated properly in each pulley.
7. Reapply Tension: Once the belt is in place, re-tighten the tensioner pulley to ensure the belt is snug.
8. Reattach the Deck: If you removed the mower deck, reattach it securely.
9. Reconnect the Battery: Reattach the battery and ensure everything is in place.
10. Test Run: Start the tractor and test run to ensure the belt is functioning correctly.

Maintenance Tips for the Transmission Belt

Maintaining the transmission belt is crucial for the longevity of your Troy Bilt Pony. Here are some effective maintenance tips:

Regular Inspections

- Check for Wear: Look for signs of wear, such as fraying or cracking on the belt surface.
- Inspect Pulleys: Ensure that pulleys are clean and free from debris that could affect the belt's performance.

Keep it Clean

- Debris Removal: Regularly clean the area around the belt and pulleys to prevent dirt and grass build-up, which can cause wear.

Proper Storage

- Store Indoors: When not in use, store your Troy Bilt Pony in a dry, covered area to protect it from the elements.
- Avoid Excessive Sunlight: Prolonged exposure to sunlight can degrade the rubber of the belt over time.

Monitor Performance

- Listen for Unusual Noises: If you hear squeaking or grinding noises, it might indicate issues with the belt or pulleys.
- Watch for Slipping: If the tractor is not moving as it should or if the belt seems to slip, it's time for an inspection.

Conclusion

The Troy Bilt Pony transmission belt diagram is an invaluable resource for owners looking to maintain or replace the transmission belt. Understanding the function of the belt and how to interpret the diagram can save time and enhance the performance of your garden tractor. By following the steps for replacement and adhering to regular maintenance practices, you can ensure that your Troy Bilt Pony remains in excellent working condition for years to come. Whether you're a seasoned gardener or a new owner, having this knowledge empowers you to keep your machine running smoothly and efficiently.

Frequently Asked Questions

What is the purpose of the transmission belt in a Troy Bilt

Pony?

The transmission belt in a Troy Bilt Pony is responsible for transferring power from the engine to the wheels, allowing the mower to move and operate effectively.

Where can I find the transmission belt diagram for a Troy Bilt Pony?

The transmission belt diagram for a Troy Bilt Pony can typically be found in the owner's manual, or it can be accessed online through the Troy Bilt official website or various lawn care forums.

What are common symptoms of a worn-out transmission belt on a Troy Bilt Pony?

Common symptoms of a worn-out transmission belt include slipping, unusual noises, decreased speed, and difficulty in shifting gears.

How do I replace the transmission belt on my Troy Bilt Pony?

To replace the transmission belt, you should first disconnect the battery, remove the deck, and then follow the belt diagram to detach the old belt and install the new one, ensuring proper alignment.

Is there a specific maintenance schedule for the transmission belt on a Troy Bilt Pony?

While there is no strict maintenance schedule, it's advisable to inspect the transmission belt regularly for signs of wear and replace it at least every couple of years or as needed.

Can I use a universal transmission belt for my Troy Bilt Pony?

It's recommended to use the specific replacement belt that matches your Troy Bilt Pony model for optimal performance, as universal belts may not fit correctly or perform as needed.

What tools do I need to access the transmission belt on a Troy Bilt Pony?

To access the transmission belt, you will typically need basic tools such as a socket set, wrenches, and possibly a screwdriver to remove any necessary panels or covers.

Find other PDF article:

<https://soc.up.edu.ph/09-draft/files?trackid=JIV14-5913&title=bird-beak-lab-answer-key.pdf>

[Troy Bilt Pony Transmission Belt Diagram](#)

It is best known as the setting for the Greek myth of the Trojan War. The archaeological site is open to the public as a tourist destination, and was added to the UNESCO World Heritage list ...

Troy (2004) - IMDb

May 14, 2004 · Troy: Directed by Wolfgang Petersen. With Julian Glover, Brian Cox, Nathan Jones, Adoni Maropis. An adaptation of Homer's great epic, the film follows the assault on ...

Where Was Troy And What Happened To It? - WorldAtlas

Oct 13, 2022 · Troy was an ancient Bronze Age city located in modern-day Turkey. It was also the legendary setting for Homer's epic poems, the Iliad and the Odyssey, mentioned in the ...

Troy streaming: where to watch movie online? - JustWatch

Find out how and where to watch "Troy" online on Netflix, Prime Video, and Disney+ today - including 4K and free options.

Troy (film) - Wikipedia

Troy is a 2004 epic historical action film directed by Wolfgang Petersen and written by David Benioff.

Troy (2004) - Full cast & crew - IMDb

Troy (2004) - Cast and crew credits, including actors, actresses, directors, writers and more.

Trojan War - Wikipedia

The war was waged by the Achaeans (Greeks) against the city of Troy after Paris of Troy took Helen from her husband Menelaus, king of Sparta. The war is one of the most important ...

Home | Troy Life & Fire Safety Ltd.

Troy Life & Fire Safety Ltd. is one of the largest suppliers of Fire Alarm, Fire Suppression, Security, Nurse call and Communications Systems in Canada. As an Edwards Authorized ...

Troy - Prime Video

Based on the epic poem The Iliad by Homer.

Troy Apple Premium Partner | Troyestore

Uzman ekiplerden teknik destek alın Apple ürünleriniz için destek yetkili servis Troy'da! Hemen randevunuzu oluşturup teknik servis hizmeti alın.

Troy - Wikipedia

It is best known as the setting for the Greek myth of the Trojan War. The archaeological site is open to the public as a tourist destination, and was added to the UNESCO World Heritage list ...

Troy (2004) - IMDb

May 14, 2004 · Troy: Directed by Wolfgang Petersen. With Julian Glover, Brian Cox, Nathan Jones, Adoni Maropis. An adaptation of Homer's great epic, the film follows the assault on ...

Where Was Troy And What Happened To It? - WorldAtlas

Oct 13, 2022 · Troy was an ancient Bronze Age city located in modern-day Turkey. It was also the legendary setting for Homer's epic poems, the Iliad and the Odyssey, mentioned in the ...

Troy streaming: where to watch movie online? - JustWatch

Find out how and where to watch "Troy" online on Netflix, Prime Video, and Disney+ today -

including 4K and free options.

Troy (film) - Wikipedia

Troy is a 2004 epic historical action film directed by Wolfgang Petersen and written by David Benioff.

Troy (2004) - Full cast & crew - IMDb

Troy (2004) - Cast and crew credits, including actors, actresses, directors, writers and more.

Trojan War - Wikipedia

The war was waged by the Achaeans (Greeks) against the city of Troy after Paris of Troy took Helen from her husband Menelaus, king of Sparta. The war is one of the most important ...

Home | Troy Life & Fire Safety Ltd.

Troy Life & Fire Safety Ltd. is one of the largest suppliers of Fire Alarm, Fire Suppression, Security, Nurse call and Communications Systems in Canada. As an Edwards Authorized ...

Troy - Prime Video

Based on the epic poem The Iliad by Homer.

Troy Apple Premium Partner | Troyestore

Uzman ekiplerden teknik destek alın Apple ürünleriniz için destek yetkili servis Troy'da! Hemen randevunuzu oluşturup teknik servis hizmeti alın.

"Explore our detailed Troy Bilt Pony transmission belt diagram to simplify your repair process. Learn more to ensure your lawn mower runs smoothly!"

[Back to Home](#)