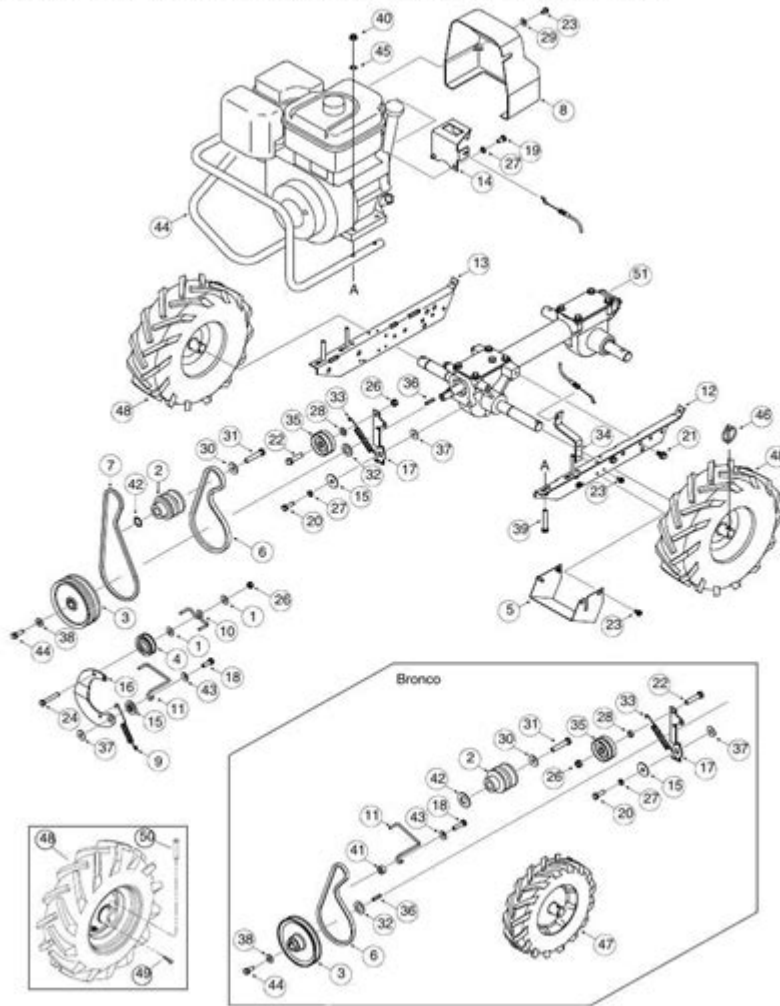


# Troy Bilt Tiller Parts Diagram

## MODELS BRONCO, SUPER-BRONCO & PRO-LINE



28

**Troy Bilt Tiller Parts Diagram** is an essential resource for anyone looking to maintain or repair their Troy Bilt tiller. Understanding the various parts of your tiller can help you troubleshoot issues, perform routine maintenance, and ensure optimal performance. Troy Bilt has been a trusted name in outdoor power equipment for decades, and their tillers are known for their durability and efficiency. This article will delve into the various components of Troy Bilt tillers, how to interpret the parts diagram, and tips for maintenance and repair.

## Understanding Your Troy Bilt Tiller

Troy Bilt tillers come in various models, each with unique features and specifications. However, they generally consist of similar parts that work together to break up soil and prepare gardens for planting. Knowing the main components of your tiller is crucial for both

usage and maintenance.

## Main Components of a Troy Bilt Tiller

1. Engine: The heart of the tiller, providing the power necessary for operation.
2. Tines: The metal blades that dig into the soil and break it apart.
3. Transmission: Transfers power from the engine to the tines, allowing them to rotate.
4. Handlebars: Control the direction and operation of the tiller.
5. Wheels: Provide stability and mobility for the tiller.
6. Chassis: The frame that holds all the components together.
7. Fuel System: Consists of the fuel tank, lines, and carburetor, responsible for delivering fuel to the engine.
8. Electrical System: Includes the ignition system, battery (if applicable), and wiring.

## Interpreting the Parts Diagram

A parts diagram is a visual representation of the various components of your tiller. It typically includes labeled diagrams, part numbers, and descriptions. Understanding how to read this diagram is vital for effective maintenance and repairs.

## Key Features of a Parts Diagram

- Numbering System: Each part is usually assigned a unique number that corresponds to a specific section of the diagram.
- Callouts: These are small lines or arrows pointing to specific parts, often with accompanying descriptions or specifications.
- Exploded View: This displays the parts in a disassembled view, showing how they fit together.
- Parts List: Often found alongside the diagram, it includes part names, numbers, and sometimes prices.

## Common Parts of a Troy Bilt Tiller

When examining a Troy Bilt tiller parts diagram, you'll encounter various components. Here are some of the most common parts:

### 1. Tines

- Types:
  - Forward-tine: Ideal for breaking new ground.
  - Counter-rotating: More effective for tilling hard soil and mixing in compost.
- Material: Usually made from high-strength steel for durability.

## **2. Engine Components**

- Air Filter: Prevents dirt and debris from entering the engine.
- Spark Plug: Ignites the fuel-air mixture for combustion.
- Fuel Filter: Ensures clean fuel reaches the engine.

## **3. Transmission Parts**

- Gear Box: Houses the gears that transfer power from the engine.
- Drive Belt: Connects the engine to the transmission, helping to control speed.

## **4. Handlebar Assembly**

- Throttle Control: Allows the operator to adjust the engine speed.
- Clutch Lever: Engages and disengages the tines.

## **5. Wheels and Axles**

- Wheels: Provide mobility; sizes can vary based on the model.
- Axles: Support the wheels and allow them to turn smoothly.

# **Maintenance Tips for Your Troy Bilt Tiller**

Regular maintenance is crucial for keeping your Troy Bilt tiller in good working condition. Here are some tips to consider:

## **1. Regular Oil Changes**

- Change the oil every 50 hours of operation or at least once per season.
- Use the recommended oil type as specified in your owner's manual.

## **2. Cleaning the Air Filter**

- Check and clean the air filter regularly to ensure optimal airflow to the engine.
- Replace the filter if it is damaged or excessively dirty.

## **3. Inspecting the Tines**

- Check the tines for wear and damage before each use.
- Replace tines that are worn down or broken to maintain efficiency.

## 4. Fuel System Maintenance

- Ensure the fuel is clean and fresh; old fuel can cause starting issues.
- Inspect fuel lines for cracks or leaks and replace if necessary.

## 5. Check Belts and Cables

- Regularly inspect drive belts for fraying or damage.
- Ensure that throttle and clutch cables are free of kinks and operate smoothly.

## Where to Find a Troy Bilt Tiller Parts Diagram

You can find parts diagrams for your Troy Bilt tiller in several locations:

1. Owner's Manual: Often includes a detailed parts diagram specific to your model.
2. Troy Bilt Website: The official website often has resources, including diagrams and parts lists.
3. Authorized Dealers: Many dealers have access to parts diagrams and can assist in identifying components.
4. Online Parts Retailers: Websites like Amazon, eBay, and specialized outdoor equipment sites often have parts diagrams for reference.
5. Forums and Community Groups: Online communities dedicated to gardening and outdoor equipment may share diagrams and tips.

## Conclusion

A thorough understanding of the Troy Bilt tiller parts diagram is essential for effective maintenance and repair of your tiller. Knowing the various components and how they work together can save you time and money in the long run. By regularly inspecting and maintaining your tiller, you can extend its lifespan and ensure it remains a reliable tool for your gardening needs. Whether you're tilling new soil or maintaining an existing garden, a well-maintained tiller will help you achieve the best results.

## Frequently Asked Questions

### What is a Troy Bilt tiller parts diagram?

A Troy Bilt tiller parts diagram is a visual representation that outlines the various components and parts of a Troy Bilt tiller, helping users understand how the tiller is assembled and how to identify specific parts for maintenance or repair.

## **Where can I find a Troy Bilt tiller parts diagram?**

You can find a Troy Bilt tiller parts diagram on the official Troy Bilt website, in the owner's manual, or through online retailers and parts suppliers that specialize in outdoor equipment.

## **Why is it important to have a parts diagram for my Troy Bilt tiller?**

Having a parts diagram is important for identifying specific components for replacement, understanding assembly, and ensuring proper maintenance and repairs to keep your tiller running efficiently.

## **How do I use a Troy Bilt tiller parts diagram for repairs?**

To use a Troy Bilt tiller parts diagram for repairs, identify the part you need to replace, locate it on the diagram, and follow the corresponding steps for disassembly and reassembly as indicated in the manual.

## **What common parts can be found on a Troy Bilt tiller parts diagram?**

Common parts found on a Troy Bilt tiller parts diagram include the tines, engine, transmission, belts, wheels, and various bolts and screws that hold the assembly together.

## **Can I order parts directly from the Troy Bilt tiller parts diagram?**

Yes, you can typically order parts directly from the Troy Bilt website or through authorized dealers by referencing the part numbers shown in the parts diagram.

## **Are there different parts diagrams for different models of Troy Bilt tillers?**

Yes, there are different parts diagrams for different models of Troy Bilt tillers, so it's important to ensure you have the correct diagram for your specific model number.

## **What should I do if I can't find the parts diagram for my Troy Bilt tiller?**

If you can't find the parts diagram for your Troy Bilt tiller, you can contact Troy Bilt customer service for assistance or search in online forums and communities for help from other users.

## **Is a parts diagram the same as a service manual for a Troy Bilt tiller?**

No, a parts diagram is specifically a visual representation of parts, while a service manual contains detailed instructions on operation, maintenance, troubleshooting, and repair.

processes.

## How often should I consult the parts diagram for my Troy Bilt tiller?

You should consult the parts diagram whenever you perform maintenance, repairs, or if you need to replace any parts to ensure you are using the correct components and procedures.

Find other PDF article:

<https://soc.up.edu.ph/58-view/Book?dataid=xnh99-2806&title=the-antarctica-cookbook.pdf>

## [Troy Bilt Tiller Parts Diagram](#)

### **Troy - Wikipedia**

It is best known as the setting for the Greek myth of the Trojan War. The archaeological site is open to the public as a tourist destination, and was added to the UNESCO World Heritage list ...

### Troy (2004) - IMDb

May 14, 2004 · Troy: Directed by Wolfgang Petersen. With Julian Glover, Brian Cox, Nathan Jones, Adoni Maropis. An adaptation of Homer's great epic, the film follows the assault on ...

### **Where Was Troy And What Happened To It? - WorldAtlas**

Oct 13, 2022 · Troy was an ancient Bronze Age city located in modern-day Turkey. It was also the legendary setting for Homer's epic poems, the Iliad and the Odyssey, mentioned in the ...

### **Troy streaming: where to watch movie online? - JustWatch**

Find out how and where to watch "Troy" online on Netflix, Prime Video, and Disney+ today - including 4K and free options.

### Troy (film) - Wikipedia

Troy is a 2004 epic historical action film directed by Wolfgang Petersen and written by David Benioff.

### **Troy (2004) - Full cast & crew - IMDb**

Troy (2004) - Cast and crew credits, including actors, actresses, directors, writers and more.

### Trojan War - Wikipedia

The war was waged by the Achaeans (Greeks) against the city of Troy after Paris of Troy took Helen from her husband Menelaus, king of Sparta. The war is one of the most important ...

### Home | Troy Life & Fire Safety Ltd.

Troy Life & Fire Safety Ltd. is one of the largest suppliers of Fire Alarm, Fire Suppression, Security, Nurse call and Communications Systems in Canada. As an Edwards Authorized ...

### Troy - Prime Video

Based on the epic poem The Iliad by Homer.

*Troy Apple Premium Partner | Troyestore*

Uzman ekiplerden teknik destek alın Apple ürünleriniz için destek yetkili servis Troy'da! Hemen randevunuzu oluşturup teknik servis hizmeti alın.

### **Troy - Wikipedia**

It is best known as the setting for the Greek myth of the Trojan War. The archaeological site is open to the public as a tourist destination, and was added to the UNESCO World Heritage list ...

### **Troy (2004) - IMDb**

May 14, 2004 · Troy: Directed by Wolfgang Petersen. With Julian Glover, Brian Cox, Nathan Jones, Adoni Maropis. An adaptation of Homer's great epic, the film follows the assault on ...

*Where Was Troy And What Happened To It? - WorldAtlas*

Oct 13, 2022 · Troy was an ancient Bronze Age city located in modern-day Turkey. It was also the legendary setting for Homer's epic poems, the Iliad and the Odyssey, mentioned in the ...

*Troy streaming: where to watch movie online? - JustWatch*

Find out how and where to watch "Troy" online on Netflix, Prime Video, and Disney+ today - including 4K and free options.

### **Troy (film) - Wikipedia**

Troy is a 2004 epic historical action film directed by Wolfgang Petersen and written by David Benioff.

*Troy (2004) - Full cast & crew - IMDb*

Troy (2004) - Cast and crew credits, including actors, actresses, directors, writers and more.

### Trojan War - Wikipedia

The war was waged by the Achaeans (Greeks) against the city of Troy after Paris of Troy took Helen from her husband Menelaus, king of Sparta. The war is one of the most important ...

### **Home | Troy Life & Fire Safety Ltd.**

Troy Life & Fire Safety Ltd. is one of the largest suppliers of Fire Alarm, Fire Suppression, Security, Nurse call and Communications Systems in Canada. As an Edwards Authorized ...

*Troy - Prime Video*

Based on the epic poem The Iliad by Homer.

*Troy Apple Premium Partner | Troyestore*

Uzman ekiplerden teknik destek alın Apple ürünleriniz için destek yetkili servis Troy'da! Hemen randevunuzu oluşturup teknik servis hizmeti alın.

Explore our comprehensive Troy Bilt tiller parts diagram for easy identification and replacement. Learn more to keep your tiller running smoothly!

[Back to Home](#)