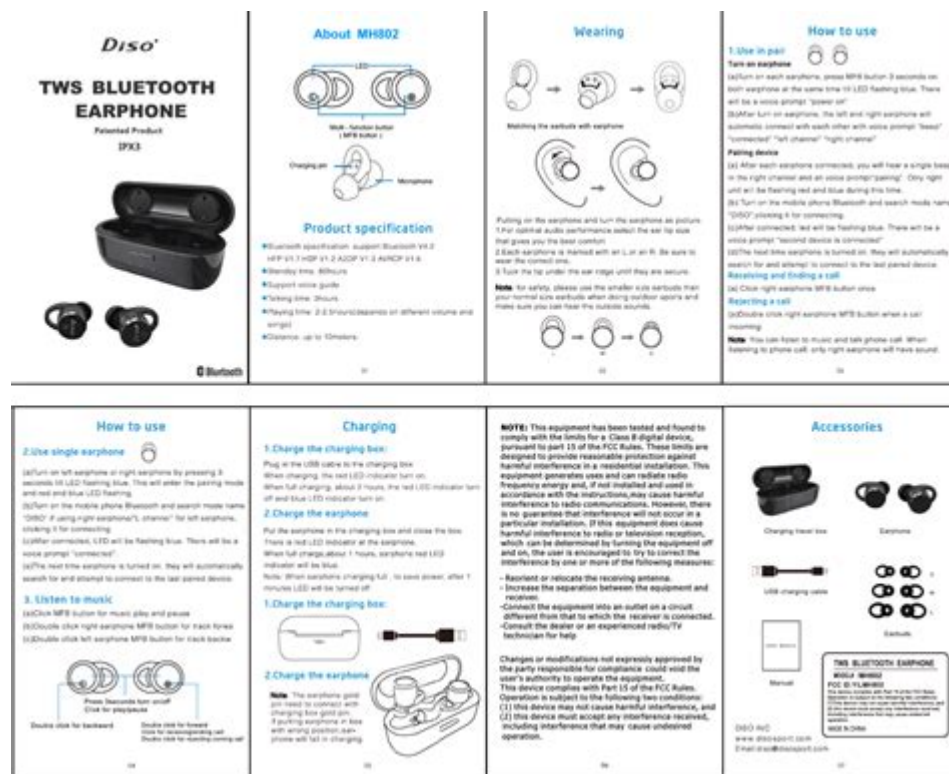


Tws Sport Earbuds Manual



TWS sport earbuds manual is essential for anyone looking to maximize their experience with true wireless stereo (TWS) earbuds, particularly designed for sports enthusiasts. These compact audio devices offer unparalleled freedom of movement, reliable sound quality, and the convenience of wireless connectivity. In this article, we will delve into various aspects of TWS sport earbuds, including their features, how to use them effectively, maintenance tips, and troubleshooting common issues.

Understanding TWS Sport Earbuds

TWS sport earbuds are designed specifically for active users who require durable, lightweight, and comfortable audio solutions during workouts or outdoor activities. Unlike traditional headphones, TWS earbuds provide a completely wireless experience, allowing users to move freely without the hassle of tangled wires.

Features of TWS Sport Earbuds

When selecting TWS sport earbuds, consider the following key features:

1. **Sound Quality:** Look for earbuds that provide a balanced sound profile, with good bass response and clear treble.
2. **Battery Life:** Most TWS sport earbuds offer a battery life of 4 to 8 hours on a single charge, with the charging case extending this to 20-30 hours.
3. **Comfort and Fit:** Ear tips come in various sizes, ensuring a secure fit

that is crucial for active use.

4. **Water Resistance:** Many sport earbuds come with an IPX rating, meaning they can withstand sweat and splashes of water.
5. **Bluetooth Connectivity:** Check for the latest Bluetooth version for improved connectivity and sound quality.
6. **Noise Isolation and Cancellation:** Certain models offer passive noise isolation or active noise cancellation for an immersive listening experience.

How to Use TWS Sport Earbuds

Using TWS sport earbuds is generally straightforward, but understanding their features can enhance your experience. Here's a step-by-step guide on how to use them effectively.

Initial Setup

1. **Unboxing:** Open the packaging and take out the earbuds, charging case, and any additional accessories (e.g., charging cable, extra ear tips).
2. **Charging:** Place the earbuds in the charging case and connect the case to a power source using the provided USB cable. Make sure they are fully charged before the first use.
3. **Pairing:**
 - Turn on your TWS earbuds by removing them from the charging case.
 - Enable Bluetooth on your smartphone or device.
 - Look for the earbuds in the list of available devices and select them to connect.

Using Touch Controls

Most TWS sport earbuds come equipped with touch controls, allowing you to manage playback easily. Here are common functions:

- **Play/Pause Music:** Tap once on either earbud.
- **Next Track:** Double-tap on the right earbud.
- **Previous Track:** Double-tap on the left earbud.
- **Answer/End Calls:** Tap once to answer or end a call.
- **Activate Voice Assistant:** Press and hold a specific earbud for a few seconds.

Refer to your specific model's manual for detailed touch control instructions.

Maintenance Tips for TWS Sport Earbuds

To ensure longevity and optimal performance of your TWS sport earbuds, follow these maintenance tips:

Cleaning Your Earbuds

- Regular Inspection: Check the earbuds for dirt or debris after each use.
- Cleaning Process:
 - Use a soft, dry cloth to wipe the exterior.
 - For the ear tips, remove them from the earbuds and wash with mild soap and water. Ensure they are completely dry before reattaching.
 - Use a soft brush or cotton swab to clean the speaker mesh gently.

Battery Care

- Avoid Full Discharges: Try not to let the battery drain completely before charging. This can extend battery lifespan.
- Charge Regularly: Utilize the charging case regularly to keep your earbuds topped off.
- Store in a Cool Place: High temperatures can damage battery health, so avoid leaving them in hot environments.

Common Issues and Troubleshooting

Despite their convenience, users may encounter some common issues with TWS sport earbuds. Here's how to troubleshoot them:

Connectivity Problems

- Issue: Earbuds won't connect to the device.
- Solution: Ensure Bluetooth is enabled on your device, and the earbuds are in pairing mode. Restart both the earbuds and the device if needed.

Audio Quality Issues

- Issue: Distorted sound or audio cutouts.
- Solution: Check the battery level; low battery can affect sound quality. Also, ensure there are no obstacles between the earbuds and the device.

Touch Controls Not Responding

- Issue: Touch controls are unresponsive.
- Solution: Ensure that the earbuds are powered on and connected. Restart the earbuds and check for any firmware updates that might improve functionality.

Charging Issues

- Issue: Earbuds not charging in the case.
- Solution: Clean the charging contacts on both the earbuds and the case.

Make sure the case itself is charged.

Conclusion

The TWS sport earbuds manual serves as a comprehensive guide for users to understand, operate, and maintain their earbuds effectively. By familiarizing yourself with the features, usage instructions, maintenance tips, and troubleshooting techniques, you can ensure that your TWS sport earbuds deliver high-quality audio and reliable performance during all your activities. Whether you're hitting the gym, going for a run, or just enjoying your favorite tunes, these earbuds can enhance your listening experience. Choose the right model that suits your needs, and enjoy the freedom of true wireless audio!

Frequently Asked Questions

What is included in the TWS sport earbuds manual?

The manual typically includes information on product specifications, setup instructions, troubleshooting tips, maintenance guidelines, and warranty information.

How do I pair my TWS sport earbuds with my device?

To pair your TWS sport earbuds, first ensure they are charged, then put them in pairing mode (usually by pressing and holding the multifunction button), and select them from your device's Bluetooth settings.

What should I do if my TWS sport earbuds are not charging?

If your TWS sport earbuds are not charging, check the charging case for any debris, ensure the charging pins are clean, try using a different charging cable or adapter, and ensure the earbuds are seated properly in the case.

How do I reset my TWS sport earbuds?

To reset your TWS sport earbuds, usually, you need to place them in the charging case, press and hold the multifunction button for about 10 seconds until you see a flashing light, then remove them from the case to complete the reset.

Can I use TWS sport earbuds for making phone calls?

Yes, TWS sport earbuds are often equipped with a built-in microphone, allowing you to make and receive phone calls hands-free.

Are the TWS sport earbuds water-resistant?

Many TWS sport earbuds come with an IP rating that indicates water and sweat resistance; refer to the manual for specific details about your model's water resistance capabilities.

How do I update the firmware on my TWS sport earbuds?

Firmware updates for TWS sport earbuds can often be done through a companion app provided by the manufacturer; refer to the manual for specific instructions on how to download and install updates.

What is the battery life of TWS sport earbuds?

Battery life varies by model, but most TWS sport earbuds can last between 4 to 8 hours on a single charge, with additional charging available from the case, extending playtime to 20-30 hours.

Find other PDF article:

<https://soc.up.edu.ph/08-print/Book?ID=bWK93-6847&title=back-at-the-barnyard-movie.pdf>

Tws Sport Earbuds Manual

vivovivo TWS A3 -

vivo TWS A3 app 1 vivo app

TWS -

Jun 25, 2020 · TWS TWS TWS ...

vivo vivo tws4hifi tws4 tws3e tws air2 ...

Aug 30, 2024 · vivo vivo vivo vivo tws4hifi tws4 tws3e tws air2 Jov IP54 ...

10/2024/TWS ...

May 6, 2024 · 7 Pro 399 400 TWS TWS TWS ...

5/200/2025/618 ...

Jun 3, 2025 · 5 tws 80 30 20 () 50 20

vivo

iQOO TWS 1i 10 45 15 2

2025/TWS...

Jul 9, 2025 · WF-1000XM5 “ ” TWS

2023/TWS/TWS ...

Jan 13, 2023 · 2022 TWS TWS

[Back to Home](#)