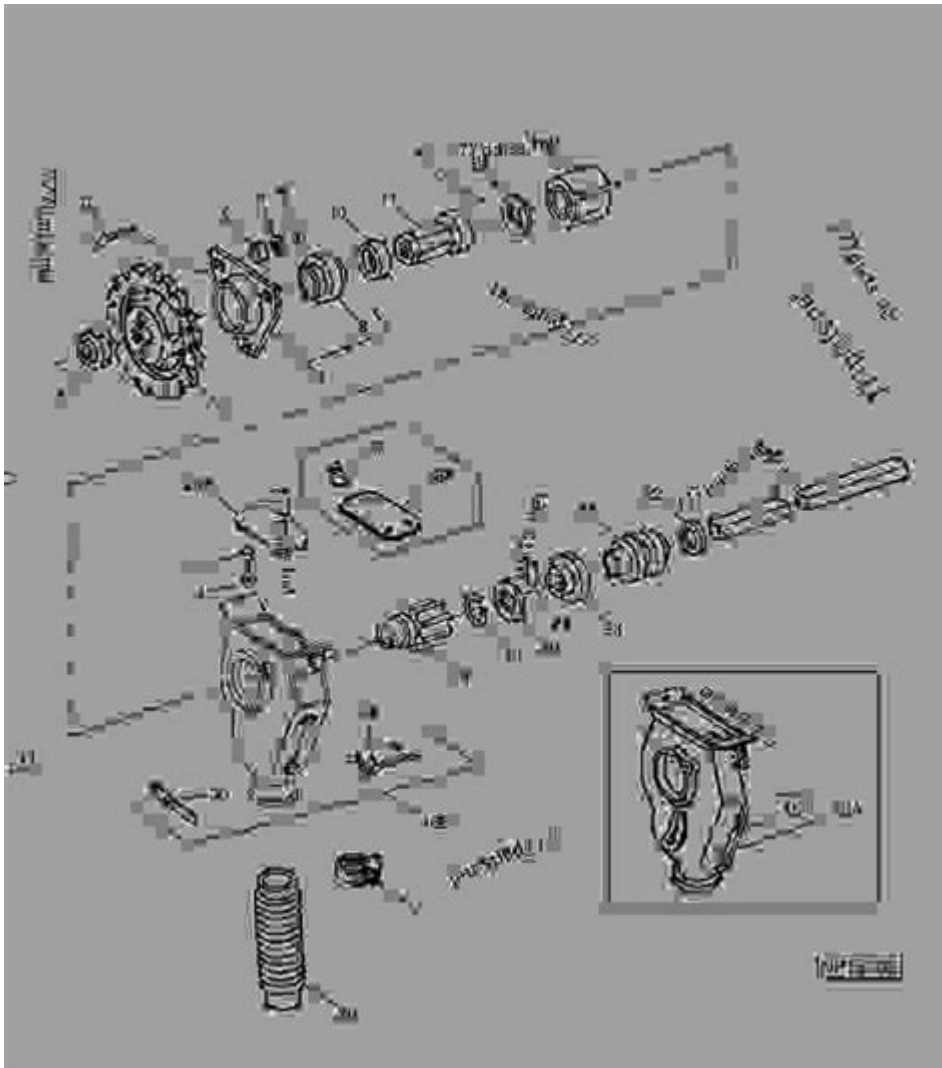


# Tye Grain Drill Parts Diagram



**tye grain drill parts diagram** is essential for anyone looking to understand the inner workings of this vital agricultural tool. The Tye grain drill is a precision seeding machine designed to plant various types of seeds, including grains, legumes, and cover crops. Understanding the components and their functions can significantly enhance maintenance and operational efficiency. This article will provide a detailed overview of the Tye grain drill parts diagram, breaking down each component and its role in the seeding process.

## Understanding the Tye Grain Drill

Before delving into the specifics of the parts diagram, it's important to understand what a Tye grain drill is and its purpose. A grain drill is utilized for planting seeds in precise rows, ensuring optimal spacing and depth for effective germination. The Tye model is known for its durability and precision, making it a favorite among farmers.

# Key Components of the Tye Grain Drill

The Tye grain drill is comprised of several essential components, each playing a critical role in its operation. Here are the main parts that can be found in a typical Tye grain drill:

- **Frame:** The backbone of the drill, providing support and stability.
- **Seed Hoppers:** Containers for holding seeds before they are distributed into the soil.
- **Seed Metering System:** Regulates the flow of seeds from the hoppers to the ground.
- **Openers:** Cut through the soil to create furrows for seed placement.
- **Press Wheels:** Compact the soil over the seeds, ensuring good soil-to-seed contact.
- **Depth Control Mechanism:** Adjusts the depth at which seeds are planted.
- **Transport Wheels:** Allow the drill to be moved from one location to another.
- **Hitch:** Connects the drill to a tractor for towing.

## Detailed Breakdown of Tye Grain Drill Parts Diagram

In order to effectively utilize a Tye grain drill, it is crucial to familiarize oneself with the specific parts and their functions. Below is a detailed overview of each component depicted in the Tye grain drill parts diagram.

### 1. Frame

The frame serves as the structural foundation of the grain drill. It is constructed from heavy-duty materials to withstand the rigors of fieldwork. The frame is designed to support all other components, ensuring the drill remains stable during operation.

### 2. Seed Hoppers

Seed hoppers are typically located at the top of the drill and come in various sizes depending on the model. They are designed to hold several bushels of seed, allowing for extended operation without the need for frequent refills.

- **Material:** Most hoppers are made from durable plastic or metal to withstand the elements.
- **Accessibility:** The design often includes easy access points for filling and monitoring seed levels.

### **3. Seed Metering System**

This system is crucial for controlling the rate at which seeds are released from the hoppers. It includes various components such as:

- Gears and Chains: Regulate seed flow based on the speed of the drill.
- Adjustable Gates: Allow for customization of the seed drop rate for different seed types.

### **4. Openers**

Openers are responsible for creating furrows in the soil, allowing seeds to be planted at the correct depth. There are several types of openers:

- Single-Disk Openers: Cut a narrow furrow and drop seeds into it.
- Double-Disk Openers: Create a wider furrow and are better for rocky or uneven soil.

### **5. Press Wheels**

Once seeds are dropped into the furrow, press wheels follow closely behind to compact the soil over the seeds. This ensures that the seeds have adequate contact with the soil for optimal germination.

- Adjustability: Many press wheels can be adjusted for different soil types and conditions.
- Material: Typically made from rubber or metal for durability.

### **6. Depth Control Mechanism**

This mechanism allows operators to adjust the planting depth based on the type of seed being used and the soil conditions. It usually consists of:

- Adjustment Levers: For manual depth adjustment.
- Markers: To indicate the set depth visually.

### **7. Transport Wheels**

Transport wheels enable the grain drill to be easily moved from one field to another. These wheels are designed to handle the weight and provide stability during transport.

- Locking Mechanism: Many models feature a locking system to keep the drill in place when not in use.

## 8. Hitch

The hitch connects the grain drill to the tractor. It is designed to withstand heavy loads and ensure a secure connection during operation.

- Types: Different hitches are available depending on the tractor size and model compatibility.

## Maintenance Tips for Tye Grain Drill Parts

Understanding the parts of the Tye grain drill is only part of the equation; regular maintenance is essential for prolonged functionality and efficiency. Here are some maintenance tips:

1. **Inspect Regularly:** Conduct routine checks on all components, especially the seed metering system and openers.
2. **Clean After Use:** Remove any residual seeds or debris after each use to prevent clogs and corrosion.
3. **Lubricate Moving Parts:** Regularly lubricate gears, chains, and other moving parts to ensure smooth operation.
4. **Check for Wear and Tear:** Monitor openers and press wheels for signs of wear, replacing them as needed.
5. **Store Properly:** When not in use, store the grain drill in a sheltered area to protect it from the elements.

## Conclusion

A thorough understanding of the **tye grain drill parts diagram** is invaluable for farmers and agricultural professionals. By familiarizing yourself with the various components, their functions, and maintenance requirements, you can ensure optimal performance of your grain drill. Regular maintenance not only extends the life of the equipment but also enhances its efficiency during planting season. Whether you are a seasoned farmer or new to agriculture, grasping the intricacies of your Tye grain drill will ultimately lead to more successful planting and better crop yields.

## Frequently Asked Questions

**What are the key components of a tye grain drill parts**

## **diagram?**

The key components typically include the seed box, opener assemblies, press wheels, frame, hitch, and various control mechanisms.

## **How can I interpret the tye grain drill parts diagram effectively?**

To interpret the diagram effectively, start by identifying the main sections, familiarize yourself with the labels and symbols used, and refer to the manufacturer's manual for detailed descriptions.

## **Where can I find a tye grain drill parts diagram?**

You can find a tye grain drill parts diagram in the user manual, on the manufacturer's website, or through agricultural equipment suppliers and forums.

## **What maintenance tasks can be identified from the tye grain drill parts diagram?**

Maintenance tasks include checking seed box calibration, inspecting opener assemblies for wear, ensuring press wheels are properly adjusted, and lubricating moving parts.

## **Are there common issues to look for in the tye grain drill parts diagram?**

Common issues include misalignment of openers, wear on press wheels, seed box blockages, and damaged frame components.

## **How does the tye grain drill parts diagram help with repairs?**

The diagram helps by providing a visual reference for locating parts, understanding how components fit together, and facilitating the identification of faulty parts.

## **Can I modify parts of the tye grain drill as per the diagram?**

Yes, modifications can be made, but it is recommended to consult with the manufacturer or a professional to ensure that changes do not affect the drill's performance or warranty.

Find other PDF article:

<https://soc.up.edu.ph/62-type/pdf?docid=FDO37-4853&title=threaded-drill-guide-bushings.pdf>

## **Tye Grain Drill Parts Diagram**

*Nala Fitness Nude Snow Outdoor Sex Video Leaked - XXB...*

Watch Nala Fitness Nude Snow Outdoor Sex Video Leaked on XXBRITS, No hassle, unlimited

streaming of British & UK ...

[Fitness Model Porn Videos | YouPorn.com](#)

The best Fitness Model porn videos are right here at YouPorn.com. Click here now and see all of the hottest Fitness Model ...

### **gay-gym videos - XVIDEOS.COM**

XVIDEOS gay-gym videos, freedei em cima do meu amigo hetero q veio jogar video game em casa parte 1 10 min ...

### **Nala Fitness OF First BBC Sex Tape Video Leaked - XXBRITS**

Watch Nala Fitness OF First BBC Sex Tape Video Leaked on XXBRITS, No hassle, unlimited streaming of British & UK ...

[naked-fitness videos - XVIDEOS.COM](#)

XVIDEOS naked-fitness videos, free2on1 DP with BBC for Altera Pars, Balls Deep Anal and DP, Gapes, ATM and Swallow ...

### **How do I get a replacement copy of Quicken? | Quicken**

Quicken for Mac imports data from Quicken for Windows 2010 or newer, Quicken for Mac 2015 or newer, Quicken for Mac 2007, Quicken Essentials for Mac, Banktivity. 30-day money back ...

### **How can I transfer an older version (2007) of Quicken to a new ...**

Thank you to Sherlock and volvogirl for their suggestions to move to 2013. I will try that as soon as I figure out where to find version 2013 to download.

### **Quicken 2007 : LEXWARE : Free Download, Borrow, and ...**

Oct 8, 2023 · quicken-2007 Scanner Internet Archive HTML5 Uploader 1.7.0 Year 2006 . plus-circle Add Review. comment. Reviews ... 211 Views . 1 Favorite. DOWNLOAD OPTIONS ...

### **Download Quicken 2007 - MajorGeeks**

Using Quicken 2007 with Vista Ultimate -- same problem others are reporting with Quicken not recognizing existing stored Quicken files and starting each new session as "New User". ...

[Download Old Versions of Quicken for Windows - OldVersion.com](#)

OldVersion.com provides free software downloads for old versions of programs, drivers and games. So why not downgrade to the version you love?.... because newer is not always bett

### **How do I download Quicken from Quicken.com to install or ...**

Jun 13, 2025 · Step 1: Download Quicken. Click the corresponding button below to download Quicken for Windows: Windows (U.S.) Windows (Canada) Click Run to begin. ... Quicken for ...

[Convert Data From an Earlier Version of Quicken \(When to Use an ...](#)

Jun 20, 2024 · Close Quicken. Download Quicken 2004 for Windows. Select Save File, then browse to your desktop and save it there. From your desktop, double-click the newly ...

### **Where to download your copy of Quicken**

Follow the steps to create a Quicken ID, download the software, and activate your membership. I'm renewing or updating my subscription Confirm your existing Quicken ID and follow the ...

### **Where to download Quicken 2007 Mac 16.2.4? — Quicken**

I have an old installer of Quicken 2007 for Mac that installs 16.1.7. I just set up a Mojave virtual machine to continue running Quicken 2007 on top of Catalina and Big Sur, and I forgot that ...

#### Need Quicken 2007 for Mac

If so, then any copy of Quicken 2007 will work. If you no longer have the Mac running Mac OS 10.6.8 or earlier, and are trying to just update the file on a modern Mac, then you must find the ...

Explore our detailed tye grain drill parts diagram to understand your equipment better. Learn more about maintenance and repairs for optimal performance!

[Back to Home](#)