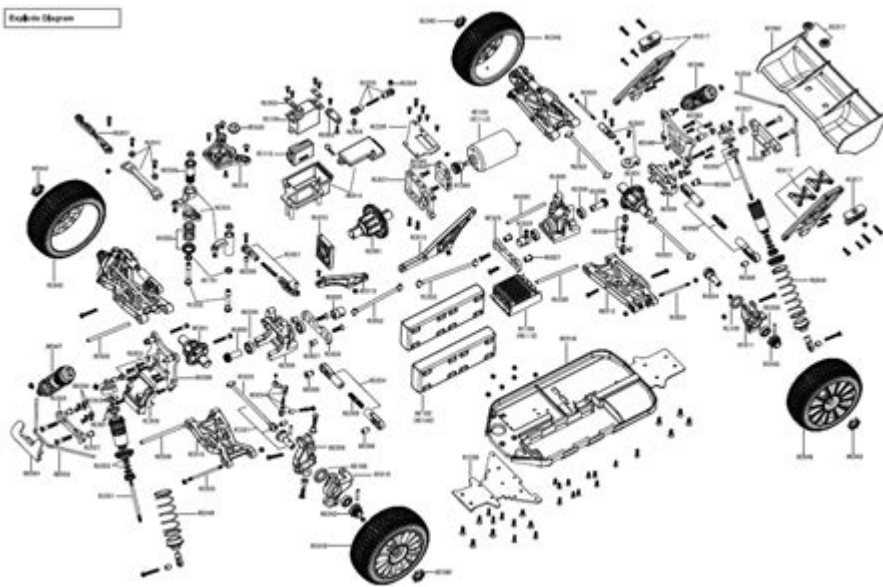


Traxxas Slash Parts Diagram



Traxxas Slash parts diagram offers a comprehensive visual representation of the components that make up one of the most popular RC vehicles on the market. The Traxxas Slash, known for its durability and versatility, is a favorite among hobbyists who enjoy off-road racing and bashing. Understanding the parts diagram is essential for both beginners and experienced users, as it helps in identifying components, troubleshooting issues, and performing upgrades or repairs. This article will delve into the intricacies of the Traxxas Slash parts diagram, outlining its significance, the major components, and tips for maintenance and upgrades.

Understanding the Traxxas Slash Parts Diagram

The Traxxas Slash parts diagram serves as an invaluable tool for anyone looking to familiarize themselves with the vehicle's structure. It provides a clear layout of the various components, allowing users to locate parts easily and understand how they interact with one another.

Importance of the Parts Diagram

1. Identification of Components: The diagram labels each part, making it easier to identify specific components, whether for replacement or repair.
2. Troubleshooting: If a part malfunctions, the diagram helps users pinpoint issues quickly, saving time and frustration.
3. Guidance for Upgrades: For enthusiasts looking to enhance their Slash's performance, the parts diagram provides insights into compatibility and available upgrade options.
4. Assembly and Disassembly: For those building or modifying their vehicle, the diagram serves as a guide for proper assembly and disassembly.

Major Components of the Traxxas Slash

The Traxxas Slash is made up of numerous components, each playing a crucial role in the vehicle's performance. Below are some of the major parts commonly found in the parts diagram:

Chassis

The chassis is the backbone of the Traxxas Slash, providing the structural support for all other components.

- Material: Typically made of composite materials for durability.
- Design: Features a modular design that allows for easy access to the electronics and drivetrain.

Drivetrain

The drivetrain is essential for transferring power from the motor to the wheels, and it includes several key components:

- Motor: The heart of the RC vehicle, available in brushed or brushless options.
- ESC (Electronic Speed Controller): Regulates the power sent to the motor and controls speed.
- Transmission: Transfers power from the motor to the drive shafts, often featuring adjustable gearing.
- Differentials: Allow for smooth turning by distributing power between the left and right wheels.

Suspension System

The suspension system is critical for absorbing shocks and providing a smooth ride over rough terrain.

- Shock Absorbers: Typically oil-filled, these help manage bumps and jumps.
- A-Arms: Control the movement of the wheels, providing stability and maneuverability.
- Shock Towers: Support the shocks and provide attachment points for adjustment.

Wheels and Tires

The wheels and tires are vital for traction and handling.

- Tires: Designed for various terrains, including off-road and on-road options.

- Wheels: Available in different sizes and materials, affecting weight and performance.

Electronics

The electronics of the Traxxas Slash are crucial for control and functionality.

- Receiver: Receives signals from the transmitter and relays them to the ESC.
- Servo: Responsible for steering, translating the input from the transmitter into motion.
- Battery: Powers the electronics and motor, with options ranging from NiMH to LiPo.

Step-by-Step Maintenance Using the Parts Diagram

Maintaining your Traxxas Slash is essential for optimal performance and longevity. The parts diagram can guide you through various maintenance tasks:

Routine Inspection

1. Visual Check: Regularly inspect the chassis, suspension components, and drivetrain for wear and tear.
2. Check Electronics: Ensure that all connections are secure, and inspect the battery for any signs of damage.

Cleaning the Vehicle

- Remove Dirt and Debris: Use a soft brush or compressed air to clean the chassis and components.
- Avoid Water: While some parts may be waterproof, it's best to keep electronics dry.

Lubrication

- Grease Moving Parts: Apply grease to the drivetrain and any other moving parts to reduce friction and wear.
- Shock Oil: Check and refill the shock oil as needed to maintain performance.

Replacing Worn Parts

1. Identify Worn Components: Use the parts diagram to locate parts that need replacement.

2. Order Replacement Parts: Ensure you purchase genuine Traxxas parts for compatibility and quality.
3. Follow Assembly Instructions: Use the diagram to assist with reassembly after replacement.

Upgrading Your Traxxas Slash

Upgrading parts on your Traxxas Slash can significantly enhance its performance. The parts diagram can help you determine which components can be upgraded.

Performance Upgrades

- Motor Upgrade: Consider upgrading to a more powerful brushless motor for increased speed and efficiency.
- ESC Upgrade: A higher-quality ESC can handle more power and improve throttle response.
- Suspension Upgrades: Upgrading shocks or A-arms can enhance handling and stability, especially during jumps.

Cosmetic Upgrades

- Body Shells: Customize the look of your Slash with various body shells available in different designs and colors.
- Wheels and Tires: Upgrading to different wheels and tires can not only improve performance but also give your vehicle a unique appearance.

Tools Required for Upgrades

To carry out upgrades effectively, you'll need the right tools:

- Screwdrivers: Flathead and Phillips screwdrivers for disassembly.
- Hex Wrenches: For removing and tightening screws on the chassis and wheels.
- Pliers: Useful for gripping and manipulating various components.

Conclusion

Understanding the Traxxas Slash parts diagram is crucial for any enthusiast looking to maintain, repair, or upgrade their vehicle. With its detailed representation of components, it serves as a guide for troubleshooting and identifying parts that may need attention. By familiarizing yourself with the major components and following proper maintenance and upgrade procedures, you can ensure your Traxxas Slash remains in top condition,

delivering the performance and excitement that comes with this exceptional RC vehicle. Whether you are a beginner or a seasoned racer, mastering the parts diagram will empower you to take full control of your Traxxas Slash experience.

Frequently Asked Questions

What is the purpose of a Traxxas Slash parts diagram?

A Traxxas Slash parts diagram provides a visual representation of the components and parts of the vehicle, helping users identify, locate, and understand the assembly of each part.

Where can I find the Traxxas Slash parts diagram?

The Traxxas Slash parts diagram can typically be found on the official Traxxas website, in the product manual, or through various online hobby forums and retailer websites.

How can I use the parts diagram to repair my Traxxas Slash?

You can use the parts diagram to identify broken or worn parts, find their part numbers, and understand how to disassemble and reassemble the vehicle correctly during repairs.

Are parts diagrams available for all Traxxas Slash models?

Yes, Traxxas provides parts diagrams for various Slash models, but it's important to ensure you have the correct diagram that matches your specific model version.

What should I do if a part is missing from the diagram?

If a part is missing from the diagram, you can contact Traxxas customer service for assistance or check with your local hobby shop for availability.

Can I download the parts diagram for offline use?

Yes, many parts diagrams are available as downloadable PDFs on the Traxxas website, allowing you to save and access them offline.

How often are parts diagrams updated?

Parts diagrams are typically updated when new models are released or when there are significant changes to existing models, so it's good to check for the latest version regularly.

What information is included in a Traxxas Slash parts

diagram?

A Traxxas Slash parts diagram typically includes part numbers, names, and sometimes descriptions, as well as illustrations of how the parts fit together.

Can I use a parts diagram for upgrading my Traxxas Slash?

Yes, you can use the parts diagram to identify parts that can be upgraded and to understand compatibility with aftermarket components.

Is there a community where I can discuss Traxxas Slash parts and diagrams?

Yes, there are many online forums, Facebook groups, and Reddit communities where enthusiasts discuss Traxxas Slash parts, share diagrams, and offer repair advice.

Find other PDF article:

<https://soc.up.edu.ph/32-blog/Book?ID=DBt89-2023&title=in-examining-the-history-of-the-visionary-companies.pdf>

Traxxas Slash Parts Diagram

Traxxas Online Community

We would like to show you a description here but the site won't allow us.

Traxxas Online Community

We would like to show you a description here but the site won't allow us.

Unlock the secrets of your Traxxas Slash with our detailed parts diagram! Discover how to identify and order the right components for optimal performance. Learn more!

[Back to Home](#)