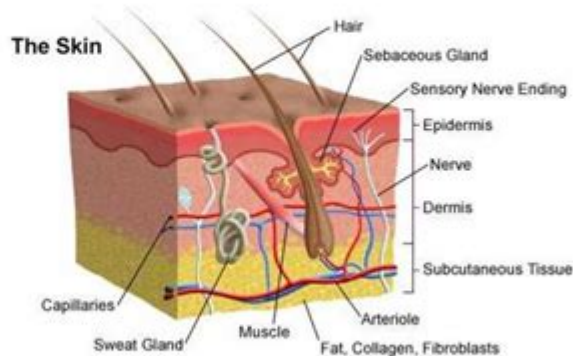


The Skin Integumentary System Worksheet

Answers Exercise 6

The Integumentary System

The **integumentary system** consists of the skin, hair, nails, the subcutaneous tissue below the skin, and assorted glands.



Functions of the Integumentary System

- Protection against injury and infection
- Regulates body temperature
- Sensory perception
- Regulates water loss
- Chemical synthesis

Protection – covers and protects the entire body against injury and infection

Physical barriers - continuity of the skin and hardness of keratinized cells

- Due to the skin's physical characteristics such as the keratinized cells and waterproofing properties of the glycolipids.
- Keratin helps waterproof the skin and protects from abrasions and bacteria
- Glycolipids prevent diffusion of water and water-soluble substances between cells
- Continuity prevents bacterial invasion
- Substances that are able to penetrate the skin:
 - Lipid-soluble substances (i.e., oxygen, carbon dioxide, steroids, and fat-soluble vitamins)
 - Oleoresins of certain plants (ex. poison ivy and poison oak)
 - Organic solvents (ex. acetone, dry cleaning fluid, and paint thinner)
 - Salts of heavy metals (ex. lead, mercury, and nickel)
 - Topical medications as motion sickness patch
- Penetration enhancers

Chemical barriers - (skin secretion and melanin)

- Skin secretions such as sebum, human defensins (antimicrobial peptides), acid mantle of the skin retards bacteria growth and/or kills them
- Melanin provides protection from UV damage

1

THE SKIN INTEGUMENTARY SYSTEM WORKSHEET ANSWERS EXERCISE 6 IS AN ESSENTIAL TOOL FOR STUDENTS AND EDUCATORS ALIKE, AS IT PROVIDES A COMPREHENSIVE UNDERSTANDING OF THE SKIN'S STRUCTURE, FUNCTIONS, AND ITS VITAL ROLE IN THE HUMAN BODY. THE INTEGUMENTARY SYSTEM, WHICH INCLUDES THE SKIN, HAIR, NAILS, AND ASSOCIATED GLANDS, PLAYS A CRUCIAL ROLE IN PROTECTING THE BODY FROM EXTERNAL FACTORS, REGULATING TEMPERATURE, AND FACILITATING SENSORY PERCEPTION. THIS ARTICLE WILL DELVE INTO THE INTRICACIES OF THE INTEGUMENTARY SYSTEM, PROVIDE ANSWERS TO COMMON WORKSHEET EXERCISES, AND HELP LEARNERS GRASP THE CONCEPTS MORE EFFECTIVELY.

UNDERSTANDING THE INTEGUMENTARY SYSTEM

THE INTEGUMENTARY SYSTEM CONSISTS PRIMARILY OF THE SKIN, WHICH IS THE LARGEST ORGAN IN THE BODY. IT IS COMPOSED OF MULTIPLE LAYERS AND VARIOUS STRUCTURES THAT CONTRIBUTE TO ITS COMPLEX FUNCTIONS. UNDERSTANDING THESE COMPONENTS IS VITAL FOR ANSWERING QUESTIONS RELATED TO THE INTEGUMENTARY SYSTEM EFFECTIVELY.

COMPONENTS OF THE INTEGUMENTARY SYSTEM

THE INTEGUMENTARY SYSTEM COMPRISES SEVERAL KEY COMPONENTS:

- **SKIN:** THE OUTER COVERING OF THE BODY, WHICH INCLUDES THE EPIDERMIS, DERMIS, AND SUBCUTANEOUS LAYER.
- **HAIR:** PROVIDES INSULATION AND PROTECTION AND IS PRESENT ON ALMOST ALL BODY SURFACES.
- **NAILS:** PROTECT THE TIPS OF FINGERS AND TOES AND ASSIST IN GRASPING OBJECTS.
- **GLANDS:** INCLUDE SEBACEOUS (OIL) GLANDS AND SWEAT GLANDS, WHICH PLAY CRUCIAL ROLES IN HYDRATION AND TEMPERATURE REGULATION.

FUNCTIONS OF THE INTEGUMENTARY SYSTEM

THE INTEGUMENTARY SYSTEM FULFILLS SEVERAL IMPORTANT FUNCTIONS:

1. **PROTECTION:** ACTS AS A BARRIER AGAINST PATHOGENS, CHEMICALS, AND PHYSICAL INJURIES.
2. **TEMPERATURE REGULATION:** HELPS MAINTAIN A STABLE BODY TEMPERATURE THROUGH SWEATING AND BLOOD FLOW REGULATION.
3. **SENSORY PERCEPTION:** HOUSES NERVE ENDINGS THAT ALLOW FOR THE SENSATION OF TOUCH, PAIN, PRESSURE, AND TEMPERATURE.
4. **VITAMIN D SYNTHESIS:** FACILITATES THE PRODUCTION OF VITAMIN D WHEN EXPOSED TO SUNLIGHT, CRUCIAL FOR BONE HEALTH.
5. **WATER RESISTANCE:** PREVENTS EXCESSIVE LOSS OF WATER AND PROTECTS UNDERLYING TISSUES FROM DEHYDRATION.

WORKSHEET ANSWERS FOR EXERCISE 6

EXERCISE 6 FROM THE SKIN INTEGUMENTARY SYSTEM WORKSHEET TYPICALLY CONTAINS QUESTIONS RELATED TO THE ANATOMY AND PHYSIOLOGY OF THE SKIN. BELOW ARE COMMON QUESTIONS AND THEIR ANSWERS TO ASSIST STUDENTS THROUGH THIS EXERCISE.

1. WHAT ARE THE THREE MAIN LAYERS OF THE SKIN?

THE THREE MAIN LAYERS OF THE SKIN ARE:

- **EPIDERMIS:** THE OUTERMOST LAYER, CONSISTING OF STRATIFIED SQUAMOUS EPITHELIAL CELLS. IT IS RESPONSIBLE FOR THE PROTECTIVE BARRIER AND CONTAINS MELANOCYTES, WHICH PRODUCE MELANIN.
- **DERMIS:** THE MIDDLE LAYER, COMPOSED OF CONNECTIVE TISSUE, BLOOD VESSELS, NERVES, AND VARIOUS STRUCTURES SUCH AS HAIR FOLLICLES AND GLANDS. IT PROVIDES STRENGTH AND ELASTICITY.

- **HYPODERMIS (SUBCUTANEOUS LAYER):** THE DEEPEST LAYER, CONSISTING OF LOOSE CONNECTIVE TISSUE AND FAT. IT CONNECTS THE SKIN TO UNDERLYING TISSUES AND ORGANS AND HELPS INSULATE THE BODY.

2. DESCRIBE THE ROLE OF MELANOCYTES.

MELANOCYTES ARE SPECIALIZED CELLS LOCATED IN THE EPIDERMIS THAT PRODUCE MELANIN, THE PIGMENT RESPONSIBLE FOR THE COLOR OF SKIN AND HAIR. THEIR PRIMARY FUNCTIONS INCLUDE:

- **PROTECTION AGAINST UV RADIATION:** MELANIN ABSORBS HARMFUL ULTRAVIOLET (UV) RAYS FROM THE SUN, REDUCING THE RISK OF SKIN DAMAGE AND SKIN CANCER.
- **SKIN TONE VARIATION:** THE AMOUNT AND TYPE OF MELANIN PRODUCED BY MELANOCYTES INFLUENCE INDIVIDUAL SKIN TONES AND THE ABILITY TO TAN.

3. WHAT IS THE FUNCTION OF SEBACEOUS GLANDS?

SEBACEOUS GLANDS ARE ASSOCIATED WITH HAIR FOLLICLES AND PRODUCE AN OILY SUBSTANCE CALLED SEBUM. THE FUNCTIONS OF SEBACEOUS GLANDS INCLUDE:

- **MOISTURIZING THE SKIN:** SEBUM HELPS KEEP THE SKIN AND HAIR HYDRATED AND PREVENTS DRYNESS.
- **ANTIMICROBIAL PROPERTIES:** SEBUM HAS ANTIBACTERIAL PROPERTIES THAT HELP PROTECT THE SKIN FROM INFECTIONS.
- **PROTECTIVE BARRIER:** FORMS A BARRIER THAT HELPS PREVENT THE PENETRATION OF FOREIGN SUBSTANCES AND REDUCES WATER LOSS.

4. EXPLAIN THE ROLE OF SWEAT GLANDS IN THERMOREGULATION.

SWEAT GLANDS PLAY A CRUCIAL ROLE IN REGULATING BODY TEMPERATURE THROUGH THE PROCESS OF SWEATING. THEY FUNCTION AS FOLLOWS:

- **EVAPORATION COOLING:** WHEN THE BODY TEMPERATURE RISES, SWEAT GLANDS PRODUCE SWEAT, WHICH IS PRIMARILY COMPOSED OF WATER. AS SWEAT EVAPORATES FROM THE SKIN SURFACE, IT COOLS THE BODY.
- **FLUID REGULATION:** SWEATING HELPS MAINTAIN FLUID BALANCE WITHIN THE BODY, ESPECIALLY DURING PHYSICAL ACTIVITY OR EXPOSURE TO HIGH TEMPERATURES.
- **ELECTROLYTE BALANCE:** SWEAT ALSO CONTAINS ELECTROLYTES, SUCH AS SODIUM AND POTASSIUM, WHICH ARE ESSENTIAL FOR VARIOUS BODILY FUNCTIONS.

5. IDENTIFY THE DIFFERENT TYPES OF SKIN TISSUE.

THE SKIN COMPRISES VARIOUS TYPES OF TISSUES, EACH SERVING SPECIFIC FUNCTIONS:

- **EPITHELIAL TISSUE:** FORMS THE OUTER LAYER OF THE SKIN (EPIDERMIS) AND PROVIDES PROTECTION.
- **CONNECTIVE TISSUE:** CONSTITUTES THE DERMIS AND PROVIDES STRUCTURAL SUPPORT, STRENGTH, AND ELASTICITY.
- **NERVOUS TISSUE:** CONTAINS NERVE ENDINGS THAT TRANSMIT SENSORY INFORMATION FROM THE SKIN TO THE BRAIN.

6. WHAT IS THE SIGNIFICANCE OF THE SUBCUTANEOUS LAYER?

THE SUBCUTANEOUS LAYER, OR HYPODERMIS, HAS SEVERAL SIGNIFICANT FUNCTIONS:

- **INSULATION:** THE FAT STORED IN THIS LAYER PROVIDES INSULATION, HELPING TO REGULATE BODY TEMPERATURE.
- **ENERGY RESERVE:** ACTS AS AN ENERGY RESERVE, AS FAT CAN BE METABOLIZED FOR ENERGY WHEN NEEDED.
- **SHOCK ABSORPTION:** CUSHIONS UNDERLYING STRUCTURES AND PROTECTS THEM FROM TRAUMA.
- **ANCHORING LAYER:** CONNECTS THE SKIN TO UNDERLYING TISSUES AND ORGANS, PROVIDING STABILITY AND SUPPORT.

CONCLUSION

THE INTEGUMENTARY SYSTEM IS A COMPLEX AND MULTIFACETED SYSTEM THAT PLAYS A CRUCIAL ROLE IN MAINTAINING OVERALL HEALTH AND WELL-BEING. UNDERSTANDING THE COMPONENTS, FUNCTIONS, AND SIGNIFICANCE OF THE SKIN, HAIR, NAILS, AND GLANDS IS ESSENTIAL FOR STUDENTS STUDYING HUMAN ANATOMY AND PHYSIOLOGY. BY WORKING THROUGH EXERCISES SUCH AS THE SKIN INTEGUMENTARY SYSTEM WORKSHEET, LEARNERS CAN REINFORCE THEIR KNOWLEDGE AND DEVELOP A DEEPER APPRECIATION FOR THE REMARKABLE FUNCTIONS OF THE SKIN.

ULTIMATELY, GRASPING THE CONCEPTS OUTLINED IN THIS ARTICLE WILL NOT ONLY AID IN COMPLETING WORKSHEET EXERCISES BUT ALSO PROVIDE A SOLID FOUNDATION FOR FURTHER STUDIES IN THE FIELD OF BIOLOGY AND HEALTH SCIENCES.

FREQUENTLY ASKED QUESTIONS

WHAT IS THE MAIN FUNCTION OF THE INTEGUMENTARY SYSTEM?

THE MAIN FUNCTION OF THE INTEGUMENTARY SYSTEM IS TO PROTECT THE BODY FROM EXTERNAL DAMAGE, REGULATE TEMPERATURE, AND PROVIDE SENSORY INFORMATION.

WHAT ARE THE PRIMARY COMPONENTS OF THE SKIN?

THE PRIMARY COMPONENTS OF THE SKIN INCLUDE THE EPIDERMIS, DERMIS, AND SUBCUTANEOUS LAYER, ALONG WITH VARIOUS ACCESSORY STRUCTURES SUCH AS HAIR FOLLICLES, SWEAT GLANDS, AND SEBACEOUS GLANDS.

Sep 15, 2024 · 6. Allskin Skin

download Snip and Sketch in Windows 11 - Microsoft Community

Apr 10, 2023 · I can't seem to find this. It didn't work on my initial install of Windows 11 and it was then deleted and I can't find where to reinstall. thanks.

The Beatles Hey Jude

The minute You let her under your skin Don't carry the world upon your shoulder Remember (Hey Jude) to let her into your heart

I can't seem to find my Grimace Skin in my Minecraft account after ...

Apr 10, 2025 · Thanks for confirming, Finn! What was the other skin that you redeemed? When you search for "Grimace" in your My Library, it also won't show up? If you redeemed it last ...

Rag'n'Bone Man Skin

Rag'n'Bone Man Skin—Rag'N'Bone Man When I heard that sound When the walls came down I was thinking

How can I import a skin to Minecraft Bedrock? - Microsoft ...

Jun 17, 2025 · Normally a Minecraft skin file is 16x16, and can go up to 32x32 on Bedrock edition. If the image is the in the correct dimensions, you could try using something other than the ...

:skin.xml,

Nov 21, 2024 · :skin.xml,

pcl2littleskin -

Nov 27, 2023 · pcl2littleskin1PCL223

hey jude -

hey jude Paul McCartney Paul McCartney The Beatles Hey Jude, don't make it bad. Jude Take a sad song and make it better. Remember to let her into your heart, Then you can start to make it better. Hey Jude, don't be afraid. Jude ...

Under My Skin?

Apr 30, 2024 · "Under My Skin" "Under My Skin" "Under My Skin" ...

Sep 15, 2024 · 6. Allskin Skin

download Snip and Sketch in Windows 11 - Microsoft Community

Apr 10, 2023 · I can't seem to find this. It didn't work on my initial install of Windows 11 and it was then deleted and I can't find where to reinstall. thanks.

The Beatles Hey Jude

The minute You let her under your skin Don't carry the world upon your shoulder

Remember (Hey Jude) to let her into your heart (Hey Jude!) You're waiting for someone to perform with The moment you need is on your shoulder ...

I can't seem to find my Grimace Skin in my Minecraft account after ...

Apr 10, 2025 · Thanks for confirming, Finn! What was the other skin that you redeemed? When you search for "Grimace" in your My Library, it also won't show up? If you redeemed it last Thursday and it's still not in your inventory, you will need to contact Minecraft support so they can check why it's not showing up in your library.

Rag'n'Bone Man SKin

Rag'n'Bone Man SKinSkin——Rag'N'Bone Man When I heard that sound When the walls came down I was thinking

How can I import a skin to Minecraft Bedrock? - Microsoft ...

Jun 17, 2025 · Normally a Minecraft skin file is 16x16, and can go up to 32x32 on Bedrock edition. If the image is the in the correct dimensions, you could try using something other than the default photo manager. Many photos on iOS will be compressed in the default photo library, and can stop the skin from working in-game.

Unlock your understanding of the skin integumentary system with our comprehensive worksheet answers for Exercise 6. Discover how to ace your studies today!

[Back to Home](#)