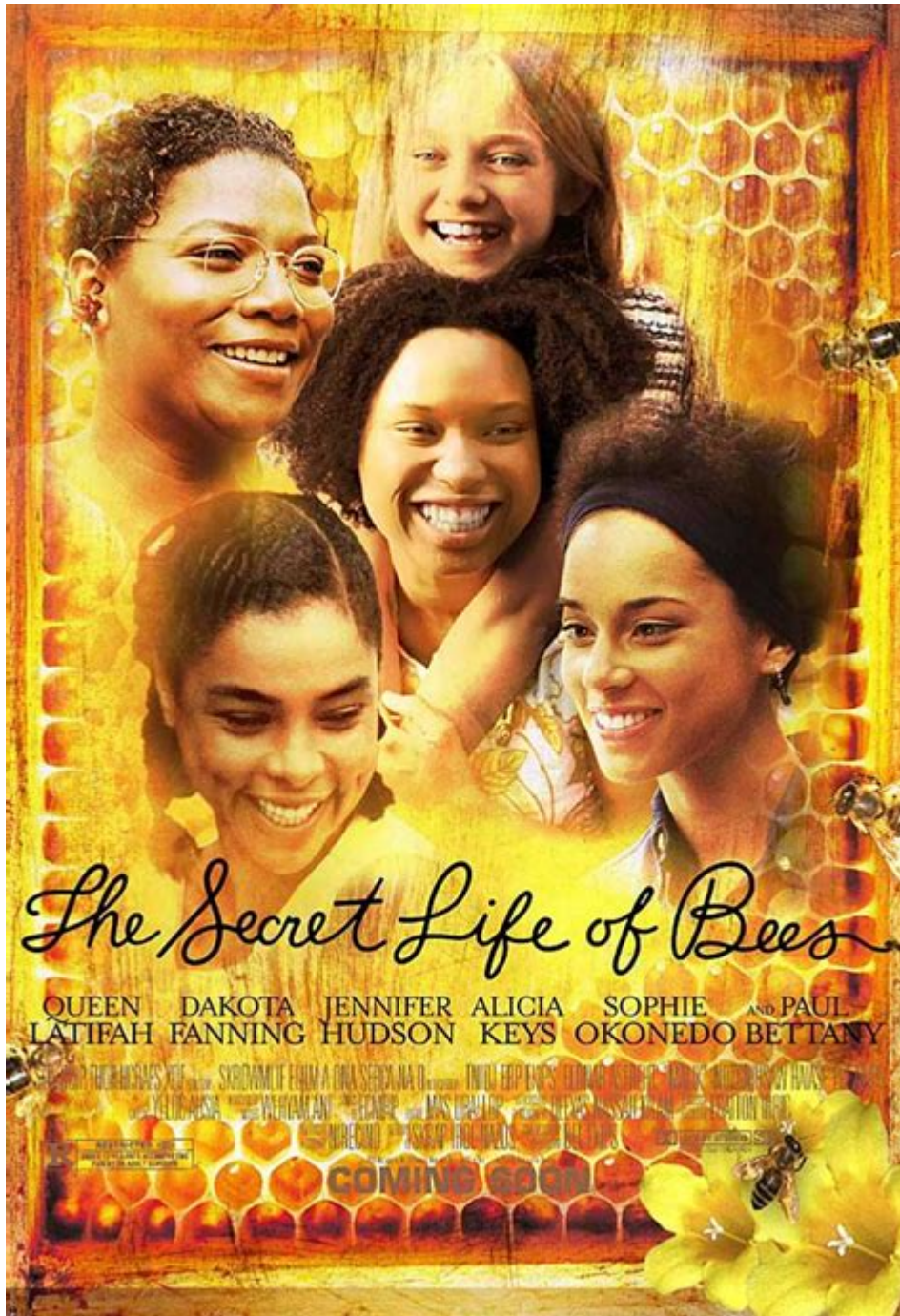


# The Secret Of Life Of Bees



**The secret of life of bees** is a fascinating topic that intertwines the beauty of nature with the intricate workings of one of the planet's most vital species. Bees have been around for millions of years, playing a crucial role in pollination, which is essential for the reproduction of many flowering plants. This article delves into the secret life of bees, exploring their social structures, communication methods, and the environmental significance they hold.

# Understanding Bee Society

Bees are inherently social creatures, living in complex communities that exhibit remarkable cooperation and organization. The structure of a bee colony is a finely tuned system that ensures survival and efficiency.

## The Hierarchical Structure

A bee colony typically consists of three main types of bees:

- **Queen Bee:** The sole fertile female in the hive, her primary role is to lay eggs. A healthy queen can produce thousands of eggs daily, ensuring the colony's growth and sustainability.
- **Worker Bees:** These are non-reproductive females responsible for foraging, nursing the young, cleaning the hive, and protecting the colony. They exhibit a wide range of tasks throughout their lifespan, which can last from a few weeks to several months.
- **Drones:** The male bees whose primary role is to mate with a queen. Drones do not participate in foraging or hive maintenance and usually die shortly after mating.

The organization and roles within a bee colony highlight a sophisticated social structure that ensures the colony functions smoothly.

## Communication: The Dance of Bees

One of the most captivating aspects of the secret of life of bees is their unique method of communication, primarily through a behavior known as the “waggle dance.” This intricate dance conveys information about the location of food sources to other worker bees.

## The Waggle Dance Explained

The waggle dance involves a series of movements that indicate the direction and distance to flowers rich in nectar and pollen:

1. **Direction:** The angle of the dance in relation to the vertical comb indicates the direction of the food source relative to the sun.
2. **Distance:** The duration of the waggle phase communicates how far the food source is located. Longer waggles indicate greater distances.
3. **Quality of Food:** The intensity of the dance can also signal the quality of the food source, helping foragers prioritize their efforts.

This remarkable form of communication exemplifies the intelligence and social dynamics within a bee colony, demonstrating how cooperation is vital for their survival.

## **The Life Cycle of Bees**

The life cycle of bees is another fascinating aspect that reflects their complexity. The development of bees undergoes several stages, each playing a critical role in the colony's lifecycle.

### **Stages of Development**

The life cycle of a bee consists of four main stages:

1. **Egg:** The queen lays eggs in hexagonal wax cells. After about three days, the eggs hatch into larvae.
2. **Larva:** In this stage, larvae are fed by worker bees with a mixture of nectar and pollen. Depending on the type of bee being developed, the diet may include royal jelly for future queens.
3. **Pupa:** After about six days, larvae spin cocoons and enter the pupal stage, where they undergo metamorphosis. This stage lasts several days to weeks, depending on the bee type.
4. **Adult:** Once fully developed, the adult bee emerges from the cocoon, ready to take on its role within the colony.

Understanding this life cycle is crucial as it highlights the importance of each stage in maintaining the health and productivity of the bee colony.

## **The Environmental Role of Bees**

Bees play an indispensable role in the ecosystem, particularly through their pollination activities. Approximately one-third of the food we consume relies on pollinators, making bees crucial for food production.

### **Pollination and Biodiversity**

The secret of life of bees extends to their impact on biodiversity and the environment:

- **Food Production:** Bees pollinate a wide variety of crops, including fruits, vegetables, and nuts. Without their pollination, many of these plants would struggle to reproduce.
- **Ecosystem Health:** Pollination supports the growth of trees, flowers, and other plants, which are essential for other wildlife. Healthy flora provides habitat and food for numerous animals and insects.
- **Economic Impact:** The agricultural sector significantly benefits from bee pollination, with estimates showing that bees contribute billions of dollars annually to the global economy through enhanced crop yields.

In essence, bees are not just important for their honey production; their ecological contributions are vital for maintaining the balance of ecosystems.

## Threats to Bee Populations

Despite their importance, bee populations are facing several threats that jeopardize their survival. Awareness of these challenges is essential for conservation efforts.

### Major Threats

The following factors contribute to the decline of bee populations:

1. **Pesticides:** Chemical pesticides used in agriculture can be harmful to bees, affecting their ability to forage and reproduce. Neonicotinoids, in particular, have been linked to bee population declines.
2. **Habitat Loss:** Urbanization and agricultural expansion lead to the destruction of natural habitats that bees rely on for food and nesting sites.
3. **Climate Change:** Changes in climate patterns affect flowering times and the availability of food sources, putting additional stress on bee populations.
4. **Diseases and Parasites:** Bees are susceptible to various diseases and parasites, such as the Varroa destructor mite, which can devastate entire colonies.

Recognizing and addressing these threats is crucial for protecting bees and ensuring their survival.

## Conservation Efforts

Efforts to conserve bee populations are critical to maintaining their ecological role. Various organizations and initiatives work to promote bee-friendly practices and raise awareness about their importance.

### Ways to Help Bees

Here are some practical steps individuals can take to support bee populations:

- **Plant Bee-Friendly Flowers:** Choose native plants that provide nectar and pollen throughout the growing season.
- **Limit Pesticide Use:** Use organic gardening practices and avoid harmful chemicals that can harm bees.
- **Create Habitat:** Provide nesting sites by leaving patches of bare soil or installing bee hotels.
- **Support Local Beekeepers:** Purchasing honey and other products from local beekeepers helps sustain healthy bee populations.

By taking these steps, individuals can contribute to the conservation of bees and help protect this essential component of our ecosystem.

# Conclusion

The secret of life of bees is a remarkable narrative of cooperation, communication, and ecological importance. As we delve deeper into their world, we uncover the intricate relationships that define their existence and the vital roles they play in our environment. By understanding and protecting these incredible creatures, we can ensure their survival and, in turn, the health of our planet.

## Frequently Asked Questions

### **What themes are explored in 'The Secret Life of Bees'?**

The novel explores themes such as racism, motherhood, and the search for identity, highlighting the importance of female relationships and the healing power of community.

### **How does the setting influence the story in 'The Secret Life of Bees'?**

Set in South Carolina during the Civil Rights Movement, the setting amplifies the social issues of the time, shaping the characters' experiences and their struggles against racism and personal trauma.

### **What role do bees play in the narrative of 'The Secret Life of Bees'?**

Bees symbolize community, productivity, and the interconnectedness of life. They serve as a metaphor for the characters' journeys towards understanding and acceptance.

### **Who are the key characters in 'The Secret Life of Bees' and what do they represent?**

Key characters include Lily Owens, who represents the quest for love and forgiveness; August Boatwright, symbolizing wisdom and nurturing; and Rosaleen, representing resilience and strength in the face of adversity.

### **What is the significance of the black Madonna in the story?**

The black Madonna represents maternal love, strength, and protection. She serves as a spiritual figure that guides Lily and reinforces themes of faith and the search for belonging.

Find other PDF article:

<https://soc.up.edu.ph/51-grid/files?dataid=BtQ19-2260&title=rotational-motion-questions-and-answers-ap-physics-1.pdf>

# [The Secret Of Life Of Bees](#)

## **Google Chrome - The Fast & Secure Web Browser Built to be Yours**

Chrome is the official web browser from Google, built to be fast, secure, and customizable. Download now and make it yours.

## **Download and install Google Chrome**

How to install Chrome Important: Before you download, you can check if Chrome supports your operating system and other system requirements.

### *Google Chrome Web Browser*

To install Chrome, simply download the installation file, then look for it in your downloads folder. Open the file and follow the instructions. Once Chrome is installed, you can delete the install ...

### Download Google Chrome - Free - latest version

Jun 4, 2025 · Download Google Chrome for Windows now from Softonic: 100% safe and virus free. More than 123410 downloads this month. Download Google Chrome latest

### *Download Chrome - Google Help*

On your iPhone or iPad, open App Store. In the search bar, enter Chrome. Tap Get. To install, follow the on-screen instructions. If prompted, enter your Apple ID password. To start ...

### Google Chrome Browser Download Free - 138.0.7204.169

Jul 22, 2025 · Google Chrome is a fast, simple, and secure web browser, built for the modern web. Chrome combines a minimal design with sophisticated technology to make the web ...

### *Google Chrome Help*

Official Google Chrome Help Center where you can find tips and tutorials on using Google Chrome and other answers to frequently asked questions.

### How to Install Google Chrome Browser on Windows?

Feb 3, 2025 · Learn how to install Google Chrome on Windows 11, 10, or 7. Step-by-step guide for downloading, updating, uninstalling, setting as default, and checking Chrome version.

### *Enterprise Browser Download for Windows & Mac - Chrome ...*

Get the tools to deploy Chrome browser for your enterprise for Windows & Mac. Explore downloads, management templates, updates and try beta.

## **Google Chrome - Apps on Google Play**

Chrome helps you do what's possible on the web. Choose the fast, secure browser by Google. GET THE BEST OF GOOGLE IN CHROME • SEARCH WITH GOOGLE - Search and get ...

### *Auto Forum New York*

Apr 15, 2025 · CORE TOPICS J.D. Power, NADA and the New York International Auto Show are excited to return to New York City for the Automotive Forum on April 15, 2025. This must-attend, one-day event precedes the New York International Auto Show and brings together the industry's most influential leaders to tackle a variety of pressing topics. Join us for the latest economic ...

### Hop, Drop 'n Roll | NoDa Brewing Co. - North End | BeerAdvocate



Hop, Drop 'n Roll is a American IPA style beer brewed by NoDa Brewing Co. - North End in Charlotte, NC. Score: 95 with 2,105 ratings and reviews. Last update: 07-27-2025.

*Hazy Little Thing IPA | Sierra Nevada Brewing Co. | BeerAdvocate*

Dec 16, 2017 · Hazy Little Thing IPA is a New England IPA style beer brewed by Sierra Nevada Brewing Co. in Chico, CA. Score: 89 with 1,836 ratings and reviews. Last update: 07-26-2025.

**Amstel Oro 0,0 Tostada | Amstel Brouwerij B. V. | BeerAdvocate**

Aug 17, 2021 · Amstel Oro 0,0 Tostada is a Low-Alcohol Beer style beer brewed by Amstel Brouwerij B. V. in Amsterdam, Netherlands. Score: 79 with 2 ratings and reviews. Last update: 07-27-2025.

Small Gods Brewing | Sidney, BC, Canada | Beers | BeerAdvocate

Small Gods Brewing in Sidney, BC, Canada. Beers, ratings, reviews, styles and another beer geek info.

**Amstel Radler Tostada 0.0 | Amstel Brouwerij B. V. - BeerAdvocate**

Apr 8, 2020 · Amstel Radler Tostada 0.0 is a Low-Alcohol Beer style beer brewed by Amstel Brouwerij B. V. in Amsterdam, Netherlands. Score: 79 with 1 ratings and reviews. Last update: 04-09-2025.

Nataka kubadili leaving certificate - JamiiForums

Aug 15, 2014 · ujapitia mabonde na milima ndugu yangu ndo maana unasema leaving haina maana. mtoa Nada nenda shuleni watakurekebishia tu. Ndiyo nikasema kama una cheti. Kama huna ni mwokozi wako kwa ajira na mambo ya vitambulisho vya uraia.

**El León | Heineken Nederland B.V. | BeerAdvocate**

El León is a European Pale Lager style beer brewed by Heineken Nederland B.V. in Zoeterwoude, Netherlands. Score: 79 with 1 ratings and reviews. Last update: 07-28-2025.

Athletic Brewing Co. | Stratford, CT | Beers | BeerAdvocate

Athletic Brewing Co. in Stratford, CT. Beers, ratings, reviews, styles and another beer geek info.

*Beer Bottle/Can Dispenser | Community | BeerAdvocate*

Nov 18, 2013 · I washed it out, flushed it out, but nada. So, I have a slightly used back kitchen counter place holder. Anyone want it, I will ship it your way. Click to expand... This is, I am fairly certain, every Dad/Father experience. Oh, wonderful, thank you for the gift, I guess. Please, someone explain the problem this gadget solves. Please.

Explore "The Secret of Life of Bees" and uncover the fascinating roles these creatures play in our ecosystem. Discover how bees impact our world today!

[Back to Home](#)