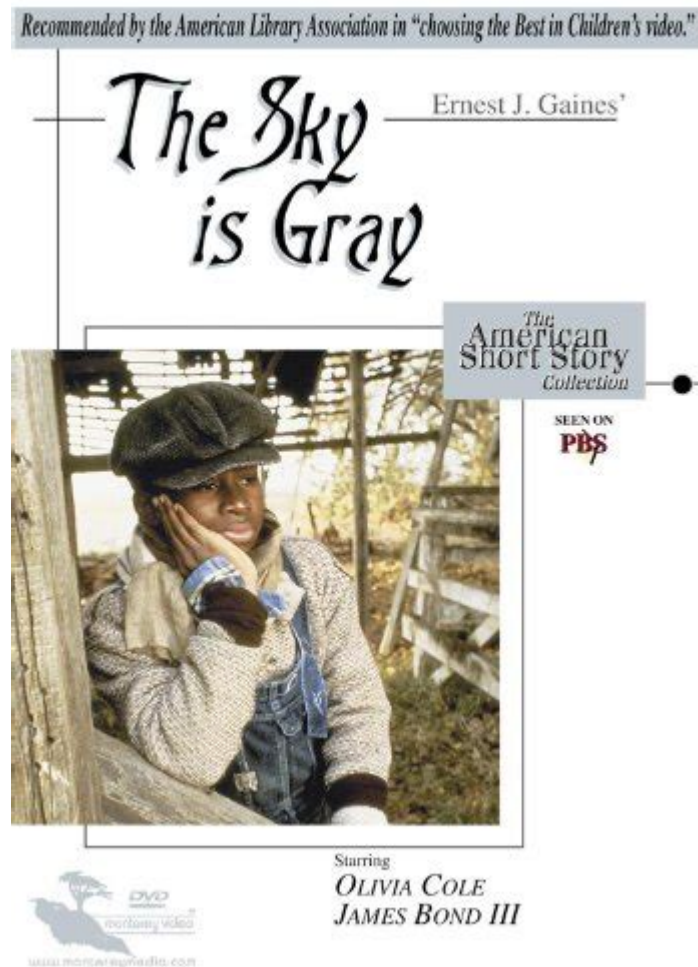


The Sky Is Gray



The sky is gray and this simple observation can evoke a plethora of emotions and thoughts. Gray skies often signal the onset of rain, a shift in seasons, or simply the presence of clouds that obscure the sun. The phenomenon of a gray sky is not just a meteorological occurrence; it also holds cultural significance, influences art and literature, and affects our mood and well-being. In this article, we will delve into the science of gray skies, their impact on human emotions, their representation in culture, and ways to embrace or cope with the gray days.

Understanding Gray Skies

When we observe a gray sky, we are often looking at a layer of thick clouds that block sunlight from reaching the Earth's surface. Understanding the science behind this can help us appreciate the natural processes occurring in the atmosphere.

What Causes Gray Skies?

Gray skies are primarily caused by the presence of clouds, which are formed

through the condensation of water vapor in the atmosphere. Here are some key points about the causes:

1. Cloud Formation:

- Water vapor rises and cools, leading to condensation.
- Different types of clouds can create gray skies, with stratus and nimbostratus being the most common culprits.

2. Humidity Levels:

- High levels of humidity can lead to overcast conditions.
- The saturation of the air with moisture contributes to the formation of thick clouds.

3. Weather Patterns:

- Low-pressure systems often bring cloudy and rainy weather.
- Cold fronts can also lead to the development of gray skies.

4. Geographical Influence:

- Coastal areas frequently experience gray skies due to the interaction of sea breezes and humidity.
- Mountain ranges can trap moisture, leading to persistent cloud cover.

The Role of Gray Skies in Weather Systems

Gray skies often indicate specific weather systems at play:

- Rain: Overcast conditions frequently precede rain, as gray clouds are typically laden with moisture.
- Snow: In colder climates, gray skies can signify impending snowfall, with the clouds filled with ice crystals.
- Fog: Low-hanging gray clouds can merge with fog, reducing visibility and creating a moody atmosphere.

The Psychological Impact of Gray Skies

The emotional response to gray skies can vary significantly from person to person. For some, they may evoke feelings of melancholy or nostalgia, while others might find comfort in the muted tones of a cloudy day.

Common Emotional Reactions

1. Seasonal Affective Disorder (SAD):

- Many individuals experience a form of depression related to seasonal changes, particularly in fall and winter when gray skies are more prevalent.
- Symptoms can include lethargy, changes in sleep patterns, and a general sense of sadness.

2. Calmness and Reflection:

- Some people find gray skies soothing, providing an opportunity for introspection and quiet thought.
- The lack of bright sunlight can create a serene environment conducive to meditation and relaxation.

3. Creativity and Inspiration:

- Artists and writers often draw inspiration from gray days, using the muted colors and soft light to evoke particular moods in their work.
- The ambiance created by gray skies can stimulate creativity and imaginative thinking.

Strategies to Cope with Gray Days

For those who struggle with the emotional weight of gray skies, there are several strategies to make these days more bearable:

- **Light Therapy:**
 - Utilizing light therapy lamps can mimic sunlight, helping to alleviate symptoms of SAD.
- **Engaging in Indoor Activities:**
 - Use gray days as an opportunity to explore hobbies, read, or engage in creative projects.
- **Connecting with Nature:**
 - Even on gray days, a walk outside can be refreshing. The air often feels cooler and crisper, and the muted surroundings can offer a unique beauty.
- **Mindfulness Practices:**
 - Meditation or yoga can help center your thoughts and improve your mood, regardless of the weather.

Gray Skies in Culture and Literature

The notion of gray skies extends beyond the physical realm and permeates culture, art, and literature. Gray has been a recurring theme that symbolizes various concepts, emotions, and states of being.

Artistic Representations

1. Painting:

- Many artists have captured the beauty of gray skies in their work, exploring themes of solitude, reflection, and the interplay of light and shadow.
- Famous painters like Claude Monet and J.M.W. Turner often utilized gray skies to evoke mood and emotional depth.

2. Photography:

- Photographers often find gray skies to be a rich backdrop, as they can enhance textures, colors, and contrasts in photographs.
- Black and white photography frequently uses gray tones to evoke nostalgia and a sense of timelessness.

Literary Themes

- **Symbolism:**

- In literature, gray skies can symbolize uncertainty, gloom, or the passage of time.
- Authors may use gray skies to set the mood or foreshadow events in a story.
- Poetry:
 - Poets often reflect on gray skies as a metaphor for emotional states, weaving imagery of clouds and muted colors into their verses.
 - Works by poets like Emily Dickinson and Robert Frost explore the relationship between nature and human emotion, often alluding to gray skies.

Embracing the Gray

While gray skies can initially seem dreary, there are ways to embrace and appreciate the beauty they bring. Recognizing the value of these days can lead to a more balanced perspective on nature.

Finding Beauty in Gray

- Appreciating Nature's Palette:
 - Gray skies often bring out the richness of colors in nature, highlighting the greens of trees and the browns of the earth.
- Mood Lighting:
 - The soft, diffused light of a gray day can create a cozy atmosphere in homes, making it an ideal time for gatherings or introspective moments.
- Mindfulness and Presence:
 - Gray days encourage us to slow down and be present, allowing for reflection on our lives and surroundings.

Creating a Personal Ritual for Gray Days

Establishing a personal ritual can help transform the experience of gray skies into something uplifting:

1. Brew a Special Tea or Coffee:
 - Enjoy a warm beverage while watching the clouds roll by.
2. Set Up an Indoor Sanctuary:
 - Create a cozy nook with blankets, cushions, and books to immerse yourself in comfort.
3. Listen to Music or Podcasts:
 - Curate a playlist of calming or uplifting music to enhance your mood.
4. Engage in Creative Pursuits:
 - Use the time to paint, write, or craft, allowing the gray day to serve as a backdrop for creativity.

In conclusion, the sky is gray offers a rich tapestry of meaning and experience. Whether one views gray skies as a harbinger of rain or as a canvas for creativity, they undeniably influence our lives in various ways. By understanding their scientific basis, recognizing their emotional impact,

and embracing the cultural narratives surrounding them, we can find beauty and inspiration even in the cloudiest of days. So the next time you look up and see that gray sky, take a moment to reflect on its depth and complexity, and perhaps find joy in the tranquility it brings.

Frequently Asked Questions

What does it mean when the sky is gray?

A gray sky typically indicates overcast weather, often associated with cloud cover that can lead to rain or storms.

How does a gray sky affect mood and mental health?

Studies have shown that a gray sky can lead to feelings of sadness or lethargy in some people, while others might find it calming or cozy.

What types of clouds create a gray sky?

Gray skies are usually caused by stratus or nimbostratus clouds, which are thick and can block sunlight.

Is a gray sky always a sign of impending rain?

Not necessarily; while a gray sky can indicate rain, it can also simply mean that the atmosphere is stable and cloudy without precipitation.

Can a gray sky have positive effects on photography?

Yes, a gray sky can provide soft, diffused lighting that is ideal for photography, reducing harsh shadows and highlighting colors.

How do meteorologists predict weather changes with a gray sky?

Meteorologists analyze cloud types, temperature, humidity, and wind patterns to predict whether a gray sky will lead to rain or clear up.

Find other PDF article:

<https://soc.up.edu.ph/16-news/Book?trackid=FYZ04-2860&title=dashboard-manager-user-guide.pdf>

The Sky Is Gray

Signing in to and out of Your Ancestry® Account

To sign in, go to Ancestry.com and click SIGN IN. Enter your login details and click Sign in. To sign out, in the top-right corner of any Ancestry page, click your name or username and then ...

Ancestry.com - Signin

Sign in to access your Ancestry account and explore your family history, DNA results, and more.

Signing in to and out of Your Ancestry® Account

For help signing in to the Ancestry® app, see Ancestry App Installation & Sign in Guide.

Ancestry Account

Forgot your username or password? Don't worry! We can help! Click here for instructions on how to log in. Learn more

Ancestry® Account

Apr 15, 2025 · To cancel your membership or trial, first, sign in at

<https://www.ancestry.com/account>. Then, in the Membership section, find the membership you ...

Ancestry | Family Tree, Genealogy & Family History Records

Ancestry helps you understand your genealogy. A family tree takes you back generations—the world's largest collection of online family history records makes it possible.

Welcome back! - Ancestry

Stories and facts worth coming back to see. Whether you're searching for ship manifests or lost family ties, Ancestry® is constantly adding new ways to connect the dots.

What can we help you with? - Ancestry.com

Visit Ancestry Support to get help online for your Ancestry account and learn how to find genealogy resources with step-by-step guides.

Ancestry® App Installation & Sign in Guide

This article is for help with the Ancestry® app on mobile devices. If you're using a computer or browser (like Safari or Chrome), see Signing in to and out of Your Ancestry® Account.

Coupon Codes & Discounts | Ancestry

Find the latest Ancestry coupon codes, discounts and current promotions in one convenient place. Start your journey of discovery with as little fuss as possible, and the most savings available.

NWT Mystree Womens Ladies Large Crocheted Sleeves White ...

Find many great new & used options and get the best deals for NWT Mystree Womens Ladies Large Crocheted Sleeves White Sweater Zippered Cardigan at the best online prices at eBay! Free shipping for many products!

Mystree - Ooh La La Boutique

Button Down Cardigan [Ivory/Pale Blue-60989] Mystree \$ 62.00 Crochet Weave Slouchy Pullover Sweater [Ivory-60950] Mystree \$ 55.00 Eyelete Puff Sleeve Top [Off White-60944] Mystree \$ 55.00 Eyelete Puff Sleeve Top [Black-60944] Mystree \$ 55.00 Button Up Collar Terry Top [Off White-60920] Mystree \$ 58.00 Sleeveless Button Down Shirt [Latte-60520] ...

Mystree - Country Outfitter

Shop quality Mystree at Country Outfitter for hard to beat prices. You'll find your country when you shop Country Outfitter today!

mystree Crochet Sweater - Women's Sweaters in Seafoam | Buckle

When I received for some reason looked small but it fits perfectly. The sleeves are super adorable and the fit seems spot on. Not too long and not too short. It fits me so that the bottom band can be

worn a bit longer or hiked up to a flattering shorter fit. For the price I'm on the fence.

Mystree

Mystree desires to bring affordable, high-quality fashion pieces to the girls who have effortlessly chic style with uptown sophistication.

Mystree Boutique Clothing | Debra's Passion Boutique

Amazing quality boutique fashions from Mystree sold online at affordable prices. Check us out at debraspassionboutique.com. FREE shipping on qualified orders. #1 USA seller.

mystree : Sweaters & Cardigans for Women : Target

Embrace the balloon sleeve trend for a dramatic, fashionable look or opt for a sophisticated cable knit sweater for a timeless appeal. Pair a fitted crewneck sweater with high-waisted jeans for a ...

[Mystree - Schroeder's Gifts](#)

\$57.99 Exposed Seam Ribbed Tank \$40.99 Crochet Sleeve Jacket \$119.99 Washed Front Slit Skirt \$56.99

The Mystree Crochet Sweater: Cozy, Comfy, And Stylish

Sep 3, 2024 · The Mystree Crochet Sleeve Sweater is a unique take on the classic sweater, featuring crochet sleeves that add a touch of elegance and texture. For a more relaxed and casual look, the Open Front Lightweight Knit Crochet Cardigan Sweater is perfect for layering over dresses or tanks.

Mystree Sweaters and pullovers for Women | Online Sale up to ...

Shop Women's Mystree Sweaters and pullovers. 20 items on sale from \$26. Widest selection of New Season & Sale only at [Lyst.com](https://www.lyst.com). Free Shipping & Returns available.

Discover the beauty and meaning behind the phrase "the sky is gray." Explore its significance in art

[Back to Home](#)