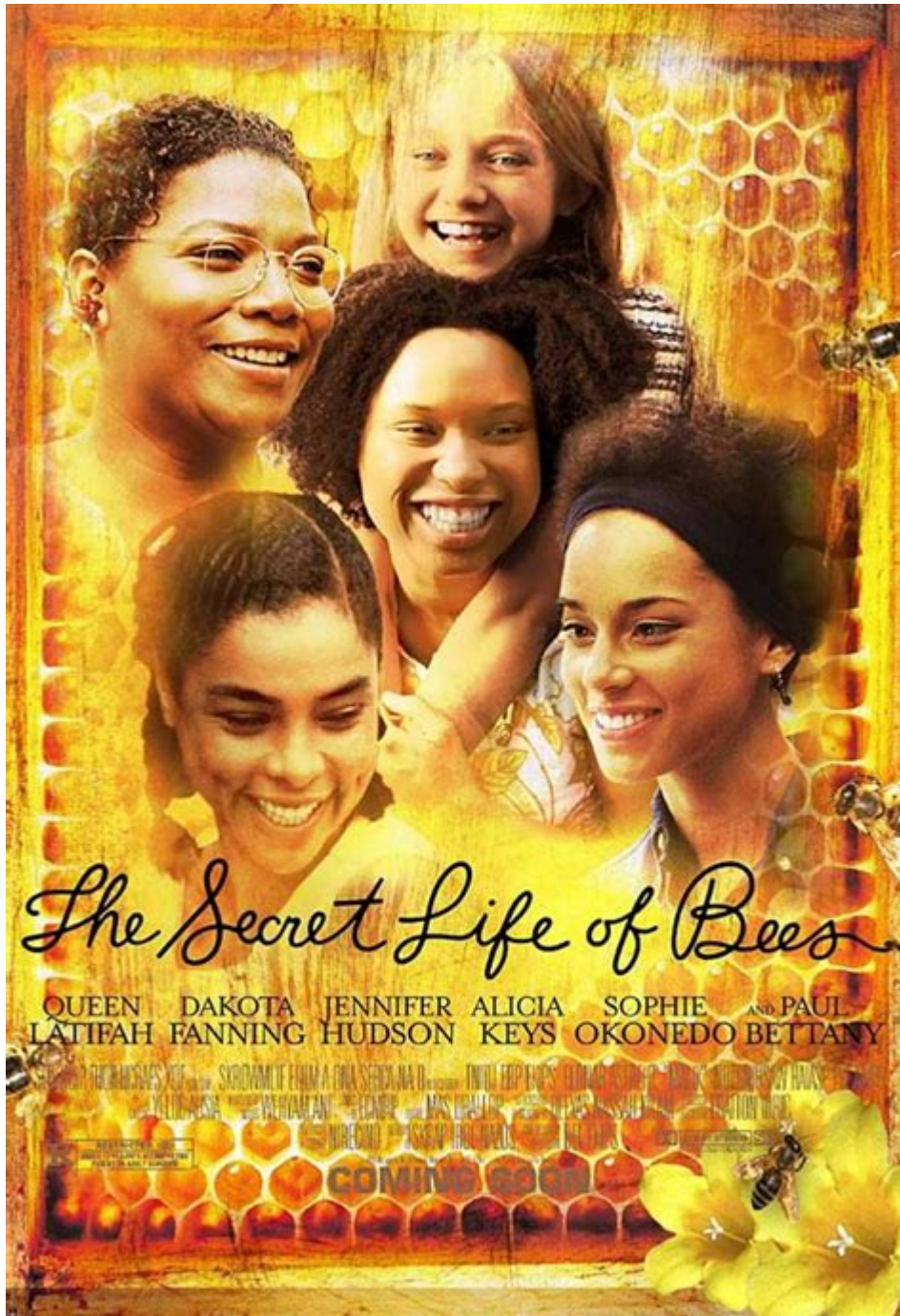


# The Secret Life Bees



The secret life of bees is a fascinating exploration into a world that thrives on cooperation, communication, and complex social structures. These industrious insects play a crucial role in our ecosystem, particularly through pollination, and their lives are intricately woven into the fabric of nature. In this article, we will delve into the various aspects of bee life, including their social structure, communication methods, foraging behaviors, and the threats they face in today's world.

# Understanding Bee Society

Bees belong to the order Hymenoptera and are primarily known for their highly organized colonies. A typical bee colony consists of three main types of bees: the queen, workers, and drones.

## The Queen Bee

The queen bee is the heart of the colony, responsible for reproduction and maintaining the hive's population. Here are some key points about the queen bee:

1. Role: The queen's primary role is to lay eggs. She can lay up to 2,000 eggs per day during peak seasons.
2. Lifespan: Queens can live for several years, often up to five years, depending on the species and environmental conditions.
3. Selection: A new queen is selected when the old queen is no longer productive or when the colony needs to swarm. Worker bees raise a new queen by feeding a selected larva a special diet of royal jelly.

## Worker Bees

Worker bees are non-reproductive females that perform a variety of tasks essential for the colony's survival:

- Foraging: They collect nectar, pollen, water, and propolis (a resin-like material).
- Nursing: Worker bees care for the queen's larvae, feeding them and ensuring their development.
- Hive Maintenance: They build and repair the hive and regulate its temperature by fanning their wings.
- Defense: Workers protect the hive from predators, sacrificing themselves if necessary.

## Drones

Drones are male bees whose primary function is to mate with a queen. Their characteristics include:

- Mating: Drones typically mate in mid-air with queens from other colonies during the mating season.
- Lifespan: Drones do not have a long lifespan; they are often expelled from the hive in the fall when resources become scarce.

# Communication: The Dance of Bees

One of the most remarkable aspects of bee life is their sophisticated communication system. Bees communicate primarily through a series of dances, which convey information about food sources and hive conditions.

## The Waggle Dance

The waggle dance is a unique behavior performed by forager bees to inform others about the location of food sources:

- Direction: The direction of the waggle indicates the angle relative to the sun.
- Distance: The duration of the dance correlates with the distance to the food source.
- Quality: The intensity and vigor of the dance communicate the quality and quantity of the nectar or pollen.

## Other Forms of Communication

In addition to the waggle dance, bees also use pheromones to communicate:

- Alarm Pheromones: When a bee feels threatened, it releases alarm pheromones to alert the colony.
- Queen Pheromones: The queen emits pheromones that help maintain the social structure and harmony within the hive.

## Foraging Behavior: The Search for Food

Foraging is a critical activity for bees, as it provides the necessary resources to sustain the colony. The process involves several stages:

### The Foraging Process

1. Scout Bees: Some worker bees become scouts, searching for food sources. They explore various areas and report back to the hive.
2. Resource Identification: Scouts identify flowers rich in nectar and pollen and communicate this information through the waggle dance.
3. Forager Recruitment: Once a reliable source is found, other worker bees are recruited to the site, maximizing the efficiency of the foraging process.

# Flower Selection

Bees are selective foragers, often visiting certain types of flowers based on:

- Color: Bees are attracted to bright colors, particularly blue and yellow.
- Shape: The shape of a flower can determine whether it is accessible to a bee's proboscis.
- Scent: Strongly scented flowers are more likely to attract bees, as they can detect pheromones from a distance.

# Challenges and Threats to Bee Populations

Despite their crucial role in ecosystems and agriculture, bees face numerous threats that jeopardize their survival.

## Pesticides

The use of pesticides, particularly neonicotinoids, has been linked to declining bee populations. These chemicals can:

- Disrupt navigation and foraging behavior.
- Weaken immune systems, making bees more susceptible to diseases.

## Habitat Loss

Urbanization, agricultural expansion, and climate change contribute to habitat loss, which affects the availability of forage and nesting sites. Key points include:

- Monoculture Farming: Large-scale farming practices often lead to reduced biodiversity, limiting food sources for bees.
- Urban Development: The conversion of natural habitats into urban areas diminishes the availability of wildflowers and nesting sites.

## Climate Change

Climate change poses a significant threat to bees by altering flowering patterns and disrupting their life cycles. Some effects include:

- Seasonal Mismatch: Changes in the timing of flower blooms can lead to a disconnect between when food is available and when bees are active.

- Extreme Weather: Increased frequency of extreme weather events can destroy hive structures and impact bee health.

## **The Importance of Bees to Ecosystems and Agriculture**

Bees are essential pollinators, playing a vital role in maintaining biodiversity and supporting agricultural production. Their contributions include:

### **Pollination Services**

- Crop Pollination: Bees pollinate approximately one-third of the food we consume, including fruits, vegetables, and nuts.
- Biodiversity: By pollinating wild plants, bees help maintain healthy ecosystems and support diverse habitats for other wildlife.

### **Economic Impact**

The economic value of pollination services provided by bees is immense:

- Agricultural Revenue: In the United States alone, the value of crops pollinated by bees is estimated to be over \$15 billion annually.
- Food Security: Healthy bee populations contribute to stable food supplies, which is critical for global food security.

## **Protecting Our Pollinators**

Given the myriad challenges facing bee populations, it is imperative to take action to protect these vital creatures. Here are some strategies:

### **Gardening for Bees**

- Plant Native Flowers: Incorporating native flowering plants into gardens can provide bees with essential forage.
- Avoid Pesticides: Using organic gardening practices can help create a safe environment for bees.

## **Supporting Local Beekeepers**

- Buy Local Honey: Purchasing honey from local beekeepers supports sustainable practices and local ecosystems.
- Educate Others: Raising awareness about the importance of bees and the threats they face can inspire collective action.

## **Advocating for Policy Changes**

- Support Bee-Friendly Legislation: Advocacy for policies that protect pollinators and promote sustainable agricultural practices can drive change at a larger scale.
- Participate in Citizen Science: Engaging in local bee monitoring initiatives can help scientists collect valuable data about bee populations and health.

## **Conclusion**

The secret life of bees is a captivating story of resilience, complexity, and interdependence. These remarkable creatures not only sustain their colonies through cooperation and communication but also play an essential role in our ecosystem and agricultural systems. Understanding their lives and the challenges they face is crucial for ensuring their survival and, by extension, the health of our planet. By taking active steps to protect bees, we can help preserve the intricate web of life that depends on them.

## **Frequently Asked Questions**

### **What are the main themes explored in 'The Secret Life of Bees'?**

The main themes include the search for maternal figures, the power of female relationships, racism, and the healing nature of community and love.

### **How does the character of Lily Owens evolve throughout the story?**

Lily Owens evolves from a troubled, guilt-ridden girl seeking her mother's love to a more self-assured young woman who learns to forgive herself and embrace her identity.

## What role do bees play as a symbol in the novel?

Bees symbolize community, hard work, and the interconnectedness of life. They represent the importance of nurturing relationships and the idea of finding one's place in the world.

## How does 'The Secret Life of Bees' address issues of race in America?

The novel addresses racial tensions in the American South during the 1960s, highlighting the struggles of African Americans through the experiences of the Boatwright sisters and their interactions with Lily.

## What is the significance of the Black Madonna in the story?

The Black Madonna symbolizes compassion, strength, and guidance. She represents a source of comfort for the characters, particularly for Lily as she navigates her personal struggles.

## How does the setting of South Carolina influence the narrative?

The setting of South Carolina during the Civil Rights Movement provides a rich backdrop that shapes the characters' experiences, emphasizing the historical context of racial injustice and the search for belonging.

Find other PDF article:

<https://soc.up.edu.ph/01-text/Book?trackid=uVY55-8799&title=1-4-study-guide-and-intervention-writing-linear-equations.pdf>

## [The Secret Life Bees](#)

*DocuSign Account Login | Sign in to DocuSign*

We would like to show you a description here but the site won't allow us.

### **DocuSign Login - Enter email to start sign in**

Enter your email to log in. Copyright © 2025 Docusign, Inc. All rights reserved.

*Sign in with Docusign*

Sign InSign in with Docusign

*Sign documents with Docusign online and on-the-go | Docusign*

Sign documents from anywhere, on most devices with an electronic signature. Learn how to create a signed document with Docusign.

## Log In to Your DocuSign Account

Jul 2, 2025 · Learn how to log in to your DocuSign account. You can log in to your DocuSign account with your email address and password. If you have issues logging in, check out the ...

## DocuSign

Log in to your DocuSign account to manage and sign documents electronically.

## DocuSign | No. 1 in Electronic Signature and Intelligent ...

Jun 16, 2025 · Add DocuSign ID Verification to your electronic signature process to validate signatory identity and support AES in use cases that require stricter identity assurance.

## Sign with DocuSign

Get Started with DocuSign. DocuSign is simple to use and enables individuals or organisations of any size to securely send and sign important documents right from your mobile device.

## Log In | DocuSign Support Center

Forgot your password? Need to request Support Center credentials for CLM.CM?

## Log In With Physical Security Keys or Passkeys - DocuSign ...

Learn how to log in with physical security keys or Passkeys. If two-step verification is enabled on your account, you can use registered physical security keys or device biometrics to log in. Go ...

## Other Versions - PyCharm - JetBrains

Get past releases and previous versions of PyCharm.

## *PyCharm 2021.3.2 Is Out | The PyCharm Blog - The JetBrains Blog*

Mar 2, 2021 · Bug fixes highlighted in this second minor release of PyCharm 2021.3: Download PyCharm 2021.3.2 For the full list of issues addressed in PyCharm 2021.3.2 please che

## Install PyCharm | PyCharm Documentation - JetBrains

May 8, 2025 · The Community Edition is now part of the unified PyCharm product: PyCharm's core features remain free and open-source. Jupyter support is now included in the core ...

## *Download PyCharm: The Python IDE for data science and web ...*

All the features and benefits of PyCharm Community Edition are available in PyCharm. You can also continue using PyCharm Community Edition up to v.2025.2, but updates and new ...

## **PyCharm 2021.3.3 Is Available | The PyCharm Blog**

Mar 3, 2021 · macOS: Python 2-based venv can now be created through PyCharm for the M1 processor [PY-46430] For the full list of issues addressed in PyCharm 2021.3.2 please check ...

## Unlock the PyCharm Pro Experience

We've combined PyCharm Community and Professional into one powerful product - PyCharm. All users now automatically start with a free one-month Pro trial. After that, you can subscribe to ...

## **PyCharm Community Edition** 📄 📄 📄 📄 📄!

PyCharm Community Edition 📄 📄 📄 Python 📄 📄 📄.

## 📄 IntelliJ IDEA

📄 📄 Java 📄 Kotlin 📄 📄 IDE - IntelliJ IDEA 📄 📄 📄 Windows 📄 macOS 📄 Linux 📄



## [PyCharm 2021.2.2 Is Out! | The PyCharm Blog - The JetBrains Blog](#)

Download PyCharm 2021.2.2 The second minor release of PyCharm 2021.2 contains multiple bug fixes. Python 3.10: Quick-fix to add "from \_\_future\_\_ import" annotations For the full list of iss

[PyCharm](#) [JetBrains](#) [Web](#) ...

[PyCharm Community Edition](#) [v.2025.2](#) [PyCharm](#) - [PyCharm](#) [GitHub](#) ...

Dive into "The Secret Life of Bees" and uncover the powerful themes of love

[Back to Home](#)