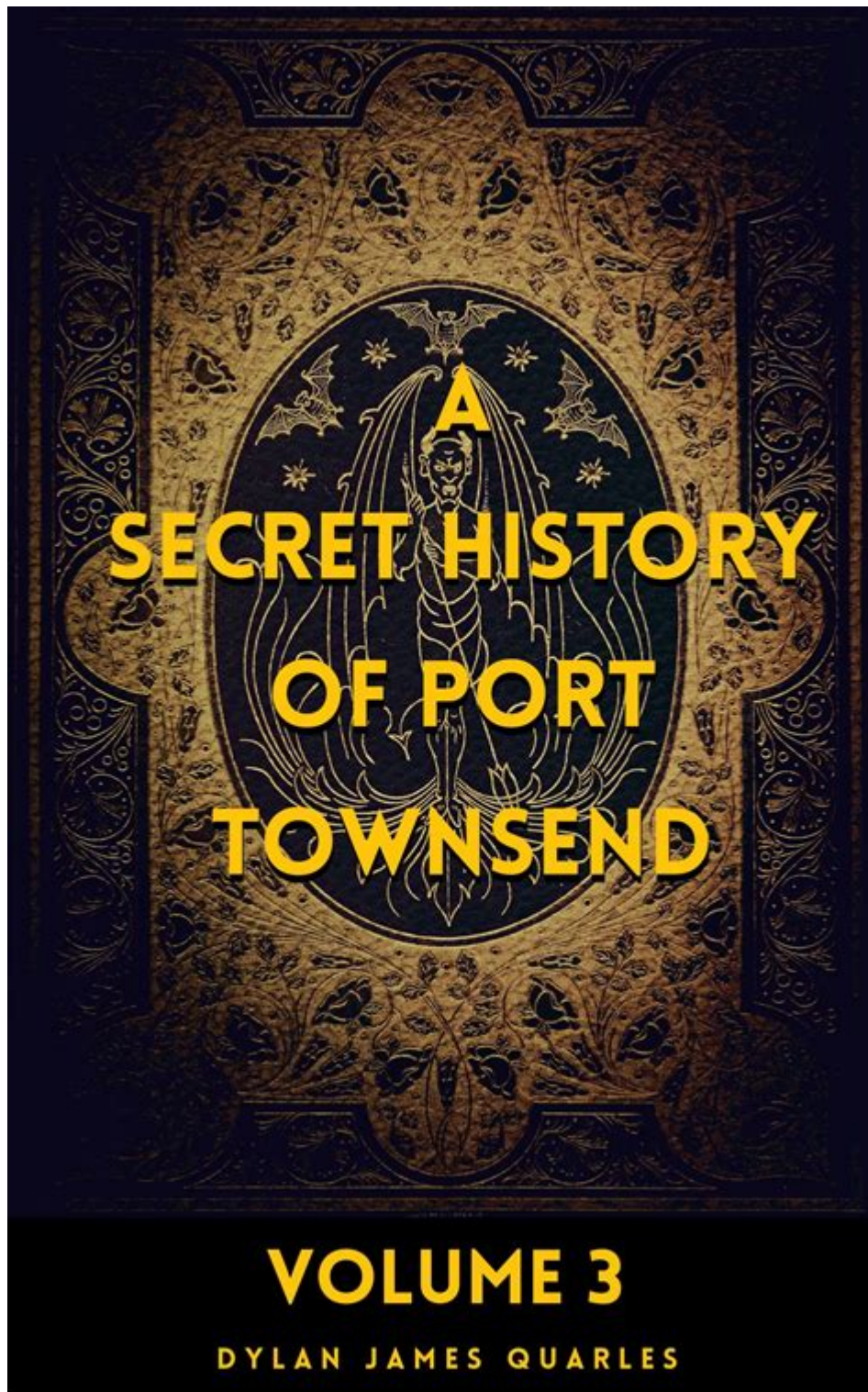


The Secret History Of Port Townsend



The secret history of Port Townsend is a captivating tale that intertwines maritime heritage, economic ambition, and the mysterious allure of the Pacific Northwest. Nestled on the northeastern tip of the Olympic Peninsula in Washington State, Port Townsend has long been a vital coastal town with rich historical roots that echo through its Victorian architecture, bustling waterfront, and vibrant community. This article explores the various facets of Port Townsend's secret history, from its early beginnings to its modern-day significance.

Early Beginnings and Indigenous Heritage

Before European settlers arrived, the area now known as Port Townsend was inhabited by the Coast Salish tribes, including the S'Klallam and Chimakum peoples. These Indigenous communities thrived on the abundant natural resources of the region, relying on fishing, hunting, and gathering.

Cultural Significance

The indigenous tribes held deep spiritual connections to the land and waters. Key elements of their culture included:

- **Fishing Practices:** Salmon fishing was a central activity, with many methods passed down through generations.
- **Trade Routes:** The strategic location of Port Townsend facilitated trade between tribes and later with European settlers.
- **Art and Storytelling:** The native communities expressed their heritage through intricate art forms and oral storytelling traditions.

As settlers began to arrive in the mid-19th century, the dynamics of the region changed significantly, laying the groundwork for Port Townsend's future.

The Birth of a Port Town

Port Townsend was officially established in 1851 and quickly became a bustling port city. Its location at the entrance to the Strait of Juan de Fuca positioned it as a key player in maritime trade, particularly during the Gold Rush era.

Strategic Location

The town's strategic location offered several advantages:

- **Access to Key Shipping Routes:** Ships traveling to and from the Pacific Ocean frequently stopped in Port Townsend.
- **Proximity to Resources:** The surrounding forests provided timber, while the rich waters offered seafood, making it an ideal location for shipbuilding and trade.
- **Cultural Exchange:** The port facilitated interactions between various cultures, leading to a melting pot of ideas and traditions.

Economic Boom and Architectural Flourishing

During the late 1800s, Port Townsend experienced an economic boom, leading to the construction of numerous Victorian buildings that still stand today. This period was marked by ambitious plans to develop the town into a major urban center.

Key Factors in Economic Growth

Several factors contributed to the growth of Port Townsend:

1. **The Gold Rush:** The influx of miners and prospectors seeking fortune in California brought increased trade and commerce to the town.
2. **Railroad Expansion:** Plans for a transcontinental railroad initially targeted Port Townsend as a key terminus, further boosting its growth potential.
3. **Timber Industry:** The rich forests surrounding the town became a significant source of timber, vital for shipbuilding and construction.

Architectural Development

The prosperity of Port Townsend during this time was reflected in its architecture. Key highlights include:

- **Victorian Buildings:** Many well-preserved structures from the late 19th century showcase stunning architectural styles, including Queen Anne, Romanesque, and Gothic Revival.
- **Historic Landmarks:** Notable buildings such as the Jefferson County Courthouse and the Palace Hotel capture the essence of the era and attract history enthusiasts and tourists alike.

The Decline and Resurgence

Despite its promising beginnings, Port Townsend faced challenges that led to a decline in its status as a major port. The completion of the railroad bypassing the town in the early 1900s significantly impacted its economy.

Reasons for Decline

Several factors contributed to the economic downturn:

- **Railroad Redirection:** The decision to route the railroad through nearby cities, such as Seattle and Tacoma, diminished Port Townsend's transportation importance.
- **Economic Shifts:** Changing industries and economic priorities led to a decline in maritime activities.
- **World Wars:** The impact of the world wars shifted focus and resources away from the town.

However, the resilient community of Port Townsend found ways to adapt and reinvent itself.

Modern Resurgence

In recent decades, Port Townsend has seen a revival fueled by tourism, art, and cultural initiatives. The town has repositioned itself as a hub for artists, writers, and outdoor enthusiasts.

- **Art and Festivals:** The town hosts various cultural events, including the Port Townsend Film Festival and the Wooden Boat Festival, drawing visitors from around the world.
- **Historic Preservation:** Efforts to preserve the town's architectural heritage have led to a renewed interest in its history and charm.
- **Outdoor Activities:** The stunning natural surroundings provide ample opportunities for hiking, kayaking, and exploring the coastal beauty.

The Mystique of Port Townsend

Port Townsend is not just known for its history but also for its mysterious and sometimes ghostly tales. The town's rich past has given rise to numerous legends and ghost stories that add to its allure.

Haunted Locations

Many buildings are said to harbor spirits from the past, including:

- **The Palace Hotel:** Known for its reported ghost sightings and eerie atmosphere.
- **The Jefferson County Courthouse:** Stories of ghostly apparitions have circulated among visitors and staff.
- **Fort Worden:** The former military fort is rumored to have ghostly soldiers wandering the grounds.

The Influence of Literature and Arts

Port Townsend's unique character has attracted writers and artists, who often draw inspiration from its landscapes and history. The town has become a haven for creativity, fostering a community that appreciates the arts in all forms.

Conclusion

The **secret history of Port Townsend** is a rich tapestry woven from the threads of indigenous culture, maritime ambition, economic fluctuations, and artistic revival. Its Victorian architecture and vibrant community are testaments to its resilience and charm. As Port Townsend continues to evolve, its history remains a vital part of its identity, inviting visitors to explore its secrets and stories. Whether you are drawn by the architectural beauty, the haunting tales, or the artistic community, Port Townsend is a destination that promises to captivate the imagination and inspire a sense of wonder about the past.

Frequently Asked Questions

What was the significance of Port Townsend during the Gold Rush?

Port Townsend served as a key supply and shipping point for prospectors heading to the gold fields of the Klondike, making it a bustling hub for commerce and trade in the late 19th century.

How did the strategic location of Port Townsend influence its development?

Situated at the entrance of Puget Sound, Port Townsend's location made it an ideal spot for maritime trade and military defense, leading to its rapid growth as a port city in the 1800s.

What architectural styles are prominent in Port Townsend?

Port Townsend features a variety of architectural styles, including Victorian, Romanesque, and Arts and Crafts, reflecting its historical prosperity and the influence of various architectural movements.

What was the role of Port Townsend in maritime history?

Port Townsend played a crucial role in maritime history as a major shipbuilding center and a port for naval operations, especially during the Spanish-American War and World War II.

Are there any ghost stories or legends associated with Port Townsend?

Yes, Port Townsend is known for its ghost stories, with many claiming that the historic buildings and sites, such as the Palace Hotel and the old fort, are haunted by spirits from its past.

How did the arrival of the railroad impact Port Townsend?

The arrival of the railroad in the early 20th century allowed for greater access to the region, fostering economic growth and connecting Port Townsend to broader markets, although it also shifted some trade away from the port.

What are some key historical events that shaped Port Townsend?

Key events include its establishment in 1851, the failed bid to make it the state capital of Washington, and its role as a military fort during various conflicts, all of which shaped its cultural and historical landscape.

Is there any notable artwork or cultural heritage in Port Townsend?

Port Townsend boasts a vibrant arts community, with numerous galleries, festivals, and historic sites that celebrate its maritime heritage and cultural diversity, including the Port Townsend Film Festival.

What efforts are being made to preserve Port Townsend's history?

Various preservation efforts are underway, including the establishment of historic districts and the restoration of key buildings, aimed at maintaining the city's unique character and educating future generations about its rich history.

Find other PDF article:

<https://soc.up.edu.ph/23-write/Book?ID=viu48-2311&title=free-7d-practice-test.pdf>

The Secret History Of Port Townsend

What Do Bengal Tigers Eat? - Animals Answers

Oct 23, 2017 · Bengal tigers will also prey on large animals such as wild boar, hog deer, grey langur, and muntjac. Bengal tigers take on smaller mammals if the larger prey is not abundant. They also ...

Where Do Bengal Tigers Live? - Habitat • Animals Answers

Oct 23, 2017 · Bengal Tiger Distribution The largest population of Bengal tigers occurs in India where it inhabits numerous national reserves and parks. The tiger is found in Melghat Tiger ...

How Long Do Bengal Tigers Live? - Lifespan • Animals Answers

A Bengal tiger has an average lifespan of 8 to 10 years in the wild. The maximum lifespan of the wild specimen is about 15 years. Very few tigers reach the 15 years age in the wild because they ...

Do Bengal Tigers Live in the Rainforest? • Animals Answers

Yes, Bengal tigers make homes in the rainforest. Bengal tiger is a pure Subcontinent breed which makes habitat in a wide range of rainforests.

What Do White Tigers Eat? - White Tiger Diet & Eating Habits

Oct 25, 2017 · All white Bengal tigers are bred in captivity. The white tiger is not a true subspecies of a tiger. Instead it is a pigment variant of orange Bengal tigers. It is hardly found in the wild for ...

How Many Babies Do Bengal Tigers have? - Animals Answers

Nov 26, 2017 · Bengal tiger cubs weigh around 780 to 1,600 grams at birth. Like other tigers, Bengal tiger babies are born blind and helpless. The cubs are highly vulnerable to the potential ...

How Long Do White Tigers Live? - White Tiger Lifespan

The last of the white tiger was observed in 1958. Since then the exhibitors or breeders insisted on producing white tigers through inbreeding. Scientists aren't sure as to how long do white tigers ...

Where Do White Tigers Come From? - White Tiger Evolution

White tigers have come from orange Bengal tigers because they are not true subspecies of a tiger, nor are they true albinos.

Tigers - Animals Answers

Yes, Bengal tigers make homes in the rainforest. Bengal tiger is a pure Subcontinent breed which makes habitat in a wide range of rainforests. It is thought to occur in the tropical moist ...

How Big Do Siberian Tigers Get? - Animals Answers

Oct 23, 2017 · Siberian tigers are the biggest of all living cats. Bengal tigers and Siberian tigers share the same shoulder heights. According to the scientists of the Siberian Tiger Project the ...

Fairfield Inn & Suites Gatlinburg Downtown - Free Hot Breakfast

Book directly at Fairfield Inn & Suites Gatlinburg Downtown for exclusive rates. Our hotel offers an outdoor pool, hot tub and free coffee & tea.

FAIRFIELD INN & SUITES GATLINBURG DOWNTOWN

Then look no further than Fairfield Inn & Suites Gatlinburg Downtown, a family-friendly hotel that brings the best of Gatlinburg to your doorstep. Free wifi is offered to guests, and rooms at ...

Fairfield Inn & Suites by Marriott Gatlinburg Downtown, Gatlinburg ...

Boasting a seasonal outdoor swimming pool and a fitness center, Fairfield Inn & Suites Gatlinburg Downtown is set in Gatlinburg and is a 10-minute walk from Bill Gladwell, The Mentalist.

Fairfield Inn & Suites Gatlinburg Downtown

One of Gatlinburg's newest hotels offering 98 guest rooms that accommodate all travelers. Located on Historic Nature Trail, it's only two blocks away from Mills Auditorium, the ...

Hotel Fairfield Inn & Suites by Marriott Gatlinburg Downtown ...

Compare hotel prices and find an amazing price for the Fairfield Inn & Suites by Marriott Gatlinburg Downtown Hotel in Gatlinburg, USA. View 39 photos and read 2648 reviews.

Fairfield Inn & Suites Gatlinburg Downtown - Agoda

Experience the perfect blend of comfort and value at Fairfield Inn & Suites Gatlinburg Downtown, where you'll find affordable luxury in the heart of Gatlinburg, Tennessee.

Fairfield Inn & Suites Gatlinburg Downtown - Gatlinburg, TN

Yelp users haven't asked any questions yet about Fairfield Inn & Suites Gatlinburg Downtown.

Fairfield Inn & Suites by Marriott Gatlinburg Downtown

Book a stay at this business-friendly hotel in Gatlinburg. Enjoy free breakfast, free WiFi, and an outdoor pool. Our guests praise the breakfast and the helpful staff in our reviews. Popular ...

Charmingly Modern Fairfield Inn & Suites Gatlinburg Downtown

May 15, 2025 · Stay walking distance to Gatlinburg's attractions and a short drive to Great Smoky Mountains National Park when you stay at Fairfield Inn.

Fairfield Inn & Suites Gatlinburg Downtown - Marriott

Spacious and contemporary guest rooms to work or relax with work area and chair. Complimentary high-speed Internet access in all guest rooms and free Wi-Fi throughout the ...

Uncover the secret history of Port Townsend

[Back to Home](#)