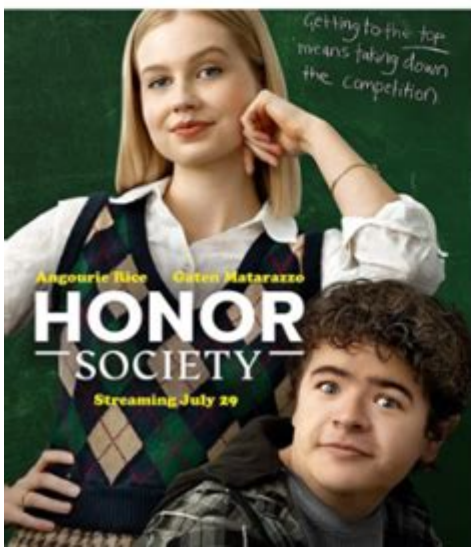


The Society Parents Guide



PARENTS GUIDE HONOR SOCIETY MOVIE REVIEW



The Society Parents Guide is an essential tool for parents who want to navigate the complex landscape of modern television and understand the implications of the content their children consume. As streaming platforms become increasingly popular and the range of available shows expands, parents often find themselves in uncharted territory. This guide aims to provide insights into the series "The Society," including its themes, content warnings, and age-appropriate recommendations, helping parents make informed decisions about their children's viewing habits.

Overview of The Society

"The Society" is a Netflix original series that premiered in May 2019. Created by Christopher Keyser, the show is often categorized as a teen drama with elements of mystery and thriller. The plot revolves around a group of high school students who return from a school trip only to discover that their entire town has mysteriously vanished. Left to fend for themselves, the teens must establish their own society, creating rules and navigating complex social dynamics without adult supervision.

Thematic Elements

Understanding the themes of "The Society" is crucial for parents who wish to assess its appropriateness for their children. Here are some of the key themes present in the series:

Power Dynamics

The show explores how power is distributed among the teenagers as they establish their own society. Characters take on leadership roles, and conflicts arise as different personalities vie for control. This theme can spark discussions about leadership, responsibility, and the ethical implications of power.

Friendship and Loyalty

Friendship is another central theme. The characters must navigate their relationships, often testing the limits of loyalty and trust. The dynamics shift as alliances form and dissolve, highlighting the complexities of adolescent relationships.

Survival and Resource Management

As the teens attempt to survive without adult guidance, they must deal with issues such as resource allocation, food shortages, and conflict resolution. These survival elements encourage critical thinking about community and cooperation.

Identity and Self-Discovery

With the absence of adult figures, the characters are pushed into situations that challenge their identities and beliefs. The series portrays their struggles with self-discovery, making it a relatable storyline for many teens.

Content Warnings

While "The Society" tackles important themes, it also contains content that may not be suitable for all audiences. Parents should be aware of the following warnings:

Violence

The show includes instances of violence, both physical and emotional. Conflicts between characters can escalate, leading to fights and confrontations. While the violence is not gratuitous, it may be unsettling for younger viewers.

Substance Use

There are multiple references to alcohol and drug use throughout the series. Some characters are shown drinking and using drugs, which may prompt discussions about substance abuse and its consequences.

Sexual Content

The show contains sexual themes, including discussions about sexual relationships and intimate scenes. These elements can lead to conversations about consent, healthy relationships, and sexual education.

Mature Language

The dialogue in "The Society" includes strong language and profanity. Parents may want to consider whether they find this language appropriate for their children.

Age Appropriateness

Determining whether "The Society" is appropriate for your child involves considering their maturity level and ability to process the themes presented. The series is rated TV-MA (Mature Audiences), which indicates it may not be suitable for viewers under 17.

Recommendations for Different Age Groups

- Tweens (Ages 10-12): It is advisable to avoid this series for younger viewers due to its mature themes and content.

- Teens (Ages 13-16): Viewers in this age group may be able to handle the series with parental guidance. Parents should consider watching the show together to facilitate discussions about the content.

- Older Teens (Ages 17+): This age group is likely to be more equipped to handle the series' mature themes and content. However, individual maturity should still be considered.

Parental Discussion Points

If parents decide that "The Society" is appropriate for their teens, it can serve as a springboard for important discussions. Here are some topics to consider:

Leadership and Responsibility

Discuss the various leadership styles exhibited by characters in the series. What qualities make a good leader? How do power dynamics affect relationships?

Friendship and Betrayal

Talk about the friendships depicted in the show. How do challenges test these relationships? What lessons can be learned about loyalty and trust?

Consequences of Actions

Reflect on the actions taken by characters in the series. What are the short-term and long-term consequences of their choices? How do these choices impact their community?

Real-World Connections

Encourage your child to draw parallels between the show and real-world situations. How do the themes of the series relate to current events or their personal experiences?

Conclusion

In conclusion, The Society Parents Guide serves as a vital resource for parents navigating the complexities of modern television. By understanding the themes, content warnings, and age appropriateness of "The Society," parents can make informed decisions about their children's viewing habits. Whether the series is deemed suitable or not, it presents an opportunity for meaningful conversations about leadership, friendship, and responsibility in

today's society. Ultimately, fostering open communication between parents and children about media consumption can lead to a deeper understanding of the world around them.

Frequently Asked Questions

What is 'The Society' about?

'The Society' is a Netflix series that follows a group of teenagers who, after being mysteriously transported to a replica of their town without any adult supervision, must establish their own society and deal with the challenges of survival and governance.

Is 'The Society' appropriate for kids?

'The Society' is rated TV-MA for mature content, including strong language, sexual situations, and violence, which may not be suitable for younger viewers. Parents should consider the maturity level of their children before allowing them to watch.

What themes are explored in 'The Society'?

The series explores themes such as power dynamics, morality, social structures, and the challenges of adolescence, as the characters navigate their new reality and the complexities of relationships in a society without adults.

Are there any specific parental concerns regarding 'The Society'?

Yes, parents may be concerned about the show's depiction of substance use, sexual content, bullying, and the general portrayal of teenage rebellion and conflict, which could be triggering or inappropriate for some viewers.

What age group is 'The Society' recommended for?

'The Society' is generally recommended for older teens and young adults, typically ages 16 and up, due to its mature themes and content.

How can parents discuss 'The Society' with their teens?

Parents can engage in discussions about the show's themes, character decisions, and moral dilemmas, encouraging their teens to think critically about the content and relate it to real-life situations and consequences.

Find other PDF article:

<https://soc.up.edu.ph/30-read/Book?docid=bDt81-1941&title=how-to-make-an-ebook-with-google-docs.pdf>

[The Society Parents Guide](#)

Student and Family Counsellor

In addition, s/he will provide the necessary professional skills to assist students in problem solving and ...

Careers - HSCDSB

Jul 17, 2025 · This form must be completed for all ECE positions and includes a list of required ...

View Job - Student and Family Counsellor - Intensive Support ...

Unique to this role, this counsellor will support students with high levels of need in a time limited capacity, by accepting ...

JOB POSTING DE TAILS - saultcollege.ca

VE DATE: Immediately Under the direction of the Special Education Coordinator and in consultation with the Mental Health ...

Huron-Superior Catholic District School Board's Post - L...

We're #hiring a Student and Family Counsellor for our northern communities. Apply today or share this post with ...

Web Authentication Proxy Configuration Example - Cisco

Aug 27, 2018 · If you choose Enabled, the WLC listens on ports 80, 8080, and 3128 by default, so you do not have ...

Common Ports Cheat Sheet: The Ultimate List - StationX

May 29, 2025 · If you want to remember a port number or protocol, this cheat sheet will help everyone, from ...

Port 3128 (tcp/udp) :: SpeedGuide

SG Ports Services and Protocols - Port 3128 tcp/udp information, official and unofficial assignments, known ...

Proxy Server Settings - Proxifier

Enter the port number to connect to the proxy server (usually 1080, 80, 8080, 3128, etc.). Choose the protocol ...

8080" +":3128" +":80" - Common Proxy Server Ports E...

Oct 23, 2024 · The string "+":8080" +":3128" +":3128" +":80"" is a search query used to find proxy servers. ...

Discover our comprehensive "The Society Parents Guide" to help you navigate parenting in today's complex world. Learn more for expert tips and insights!

[Back to Home](#)