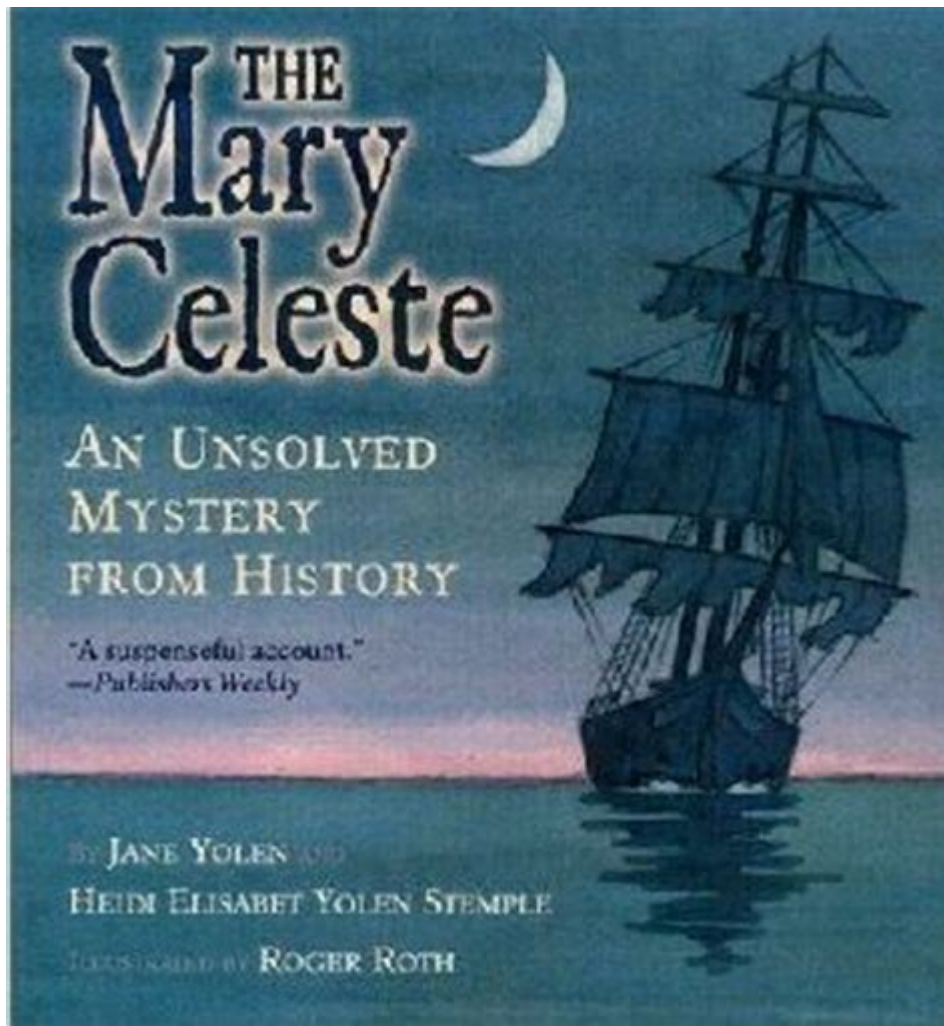


The Mary Celeste For Kids



The Mary Celeste is one of the most famous ghost ships in history, and its mysterious story captures the imagination of children and adults alike. This article will explore the intriguing tale of the Mary Celeste, the events that led to its abandonment, and the ongoing fascination surrounding this legendary vessel.

What Was the Mary Celeste?

The Mary Celeste was a merchant ship that set sail in the 19th century. Here are some key points about the ship:

- **Launch and Design:** The Mary Celeste was built in 1861 in Nova Scotia, Canada. It was a sturdy ship designed for carrying goods across the ocean.
- **Size and Capacity:** The ship was 100 feet long and could carry a large amount of cargo. It was considered advanced for its time, with a spacious hold and a comfortable cabin for the crew.
- **Original Purpose:** The ship was originally used for trading purposes, transporting goods like alcohol, furniture, and general merchandise.

The Mysterious Voyage

The most famous journey of the Mary Celeste began in November 1872. Here's a breakdown of the voyage and what happened:

Setting Sail

- **Departure:** The Mary Celeste set sail from New York City on November 7, 1872, destined for Genoa, Italy.
- **Crew:** The ship was commanded by Captain Benjamin Briggs, who was experienced and well-respected in the shipping industry. He was accompanied by his wife, son, and a crew of seven men.

The Discovery

On December 5, 1872, something unusual happened. The Mary Celeste was discovered adrift in the Atlantic Ocean, near the Azores Islands. A passing ship, the Dei Gratia, noticed the ship and decided to investigate. Here's what they found:

- **No Crew:** The ship was completely empty; there was no sign of the crew or passengers.
- **Condition of the Ship:** The Mary Celeste was in relatively good condition. The sails were set, and

there was some water in the hold, but it was not in distress.

- Cargo: The cargo of alcohol was mostly intact, indicating that the ship had not been looted.

What Happened to the Crew?

The most puzzling question surrounding the Mary Celeste is what happened to its crew. There are several theories about their disappearance:

1. Alcohol Fumes

One theory suggests that fumes from the alcohol cargo may have caused a panic among the crew. It is possible that they feared an explosion and abandoned ship in a hurry. However, there was no evidence to support this idea.

2. Lifeboat Escape

Another theory is that the crew used the lifeboat to escape due to a storm or some other emergency. They may have intended to return to the ship but never made it back.

3. Pirate Attack

Some speculate that pirates may have attacked the Mary Celeste and taken the crew hostage. However, no signs of a struggle were found on board, making this theory less likely.

4. Mutiny or Illness

There are also suggestions of mutiny or illness affecting the crew. Perhaps they turned against each other or succumbed to a disease. Again, there is little evidence to support these claims.

Theories and Speculations

The mystery of the Mary Celeste has inspired many theories over the years. Let's explore some of the most popular ones:

- **Supernatural Involvement:** Some people believe that supernatural forces may have played a role in the crew's disappearance. Ghost stories often surround the Mary Celeste, adding to its eerie reputation.
- **Natural Disasters:** Others think that a natural disaster, such as a waterspout or sudden storm, might have struck the ship, causing panic and forcing the crew to abandon it.
- **Psychological Factors:** The stress of being at sea for long periods can lead to psychological issues. Some theorists suggest that the crew may have experienced a collective panic attack.

The Legacy of the Mary Celeste

The story of the Mary Celeste continues to captivate people around the world. Its mystery has led to various cultural references, including books, movies, and documentaries. Here are some aspects of its legacy:

1. Books and Literature

Numerous books have been written about the Mary Celeste, exploring its history and the mystery of its crew's disappearance. Some famous titles include:

- "The Ghost of the Mary Celeste" by John E. Connelly
- "Ghost Ship: The Story of the Mary Celeste" by Charles Berlitz

2. Movies and Documentaries

The story has also been adapted into films and documentaries, which dramatize the events leading up to and following the ship's abandonment. These adaptations often take creative liberties, but they inspire interest in maritime history.

3. Ongoing Research

Researchers and historians continue to study the Mary Celeste. They analyze records from the time and explore new theories. Each year, new discoveries may shed light on this enduring mystery.

Fun Facts about the Mary Celeste

Here are some fun and interesting facts that kids might enjoy about the Mary Celeste:

1. The ship was found in the Atlantic Ocean, about 600 miles from where it was supposed to be.
2. No one knows for sure what happened to the crew, making it one of history's greatest mysteries.

3. The Mary Celeste was eventually salvaged and sold, but it met a tragic end when it was deliberately wrecked for insurance money.
4. Many ghost stories and legends have developed around the ship, contributing to its spooky reputation.

Conclusion

The story of the Mary Celeste is a fascinating tale of adventure, mystery, and the unknown. The ship's abandonment remains an enigma that continues to intrigue people to this day. Whether it was an accident, a natural disaster, or something more sinister, the Mary Celeste has left a lasting mark in maritime history. With its many theories and captivating legacy, it's no wonder that children and adults alike are drawn to the mysterious story of the Mary Celeste.

Frequently Asked Questions

What is the Mary Celeste?

The Mary Celeste was a famous ship that was found abandoned in the Atlantic Ocean in 1872.

Why is the Mary Celeste considered a mystery?

It is a mystery because the crew vanished without a trace, and no one knows what happened to them.

Where was the Mary Celeste sailing from?

The Mary Celeste was sailing from New York City.

Where was the Mary Celeste headed?

The ship was headed to Genoa, Italy.

Who found the Mary Celeste?

The ship was found by a British ship called the Dei Gratia.

What did the crew of the Mary Celeste leave behind?

The crew left behind their belongings, personal items, and even some food that was still on the table.

Did the Mary Celeste have any signs of a struggle?

No, there were no signs of a struggle or any violence on the ship.

What theories exist about what happened to the crew?

Some theories suggest they may have abandoned ship during a storm, while others think they could have been taken by pirates or suffered from a gas leak.

Is the Mary Celeste still around today?

No, the Mary Celeste is not around today; it was eventually wrecked in 1885.

Why is the story of the Mary Celeste important?

The story of the Mary Celeste is important because it raises questions about mystery and adventure on the high seas, capturing people's imaginations for over a century.

Find other PDF article:

<https://soc.up.edu.ph/25-style/Book?dataid=rsp28-6370&title=gray-malin-iphone-6-wallpaper.pdf>

[The Mary Celeste For Kids](#)

GL 2019 Question Bank Flashcards - Quizlet

You can access real-time results for reporting and analysis because every time a transaction is posted in General Ledger, multidimensional balances are also ...

How to Calculate MTD and YTD Values for General Ledger Data?

The article covers how to calculate Month-to-Date (MTD) and Year-to-Date (YTD) values for General Ledger (GL) data in Planful, including steps for setting up ...

Solved: Why G/L balance interest calculation job considers... - S...

Dec 17, 2020 · "We are performing G/L balance interest calculation job in S/4HANA cloud using Schedule General Ledger Jobs. While doing that for ...

Adding VLOOKUP as a control for month end workpapers

Mar 9, 2018 · With this Vlookup control in place for each month-end reconciliation worksheet, you can copy and paste the new general ledger data into the ...

Month End Accruals: A Simple Guide to Financial Managemen...

Feb 26, 2025 · Master month end accruals and financial management with our comprehensive guide, ensuring accurate financial reporting and compliance.

Facebook - log in or sign up

Log into Facebook to start sharing and connecting with your friends, family, and people you know.

Sign Up for Facebook

Sign up for Facebook and find your friends. Create an account to start sharing photos and updates with people you know. It's easy to register.

Log into your Facebook account | Facebook Help Center

How to log into your Facebook account using your email, phone number or username.

Create a Facebook account | Facebook Help Center

You can create a new account from the Facebook app or Facebook.com. If you already have an existing Instagram account, you can use this account to create a new Facebook account.

Log Into Facebook

Log into Facebook to start sharing and connecting with your friends, family, and people you know.

Facebook on the App Store

Whether you're thrifting gear, showing reels to that group who gets it, or sharing laughs over fun images reimagined by AI, Facebook helps you make things happen like no other social network.

Facebook

Facebook ... Facebook

Facebook - Free download and install on Windows | Microsoft Store

The Facebook app helps you connect with friends, family and communities of people who share your interests. Connecting with your friends and family, as well as discovering new ones, is ...

Facebook

Facebook is not available on this browser To continue using Facebook, get one of the browsers below. Learn more Chrome Firefox Edge + Meta © 2025

Account Recovery | Facebook Help Center

Help Center English (US) Using Facebook Login, Recovery and Security Login and Password
Account Recovery

Uncover the mystery of the Mary Celeste for kids! Explore its intriguing story

[Back to Home](#)