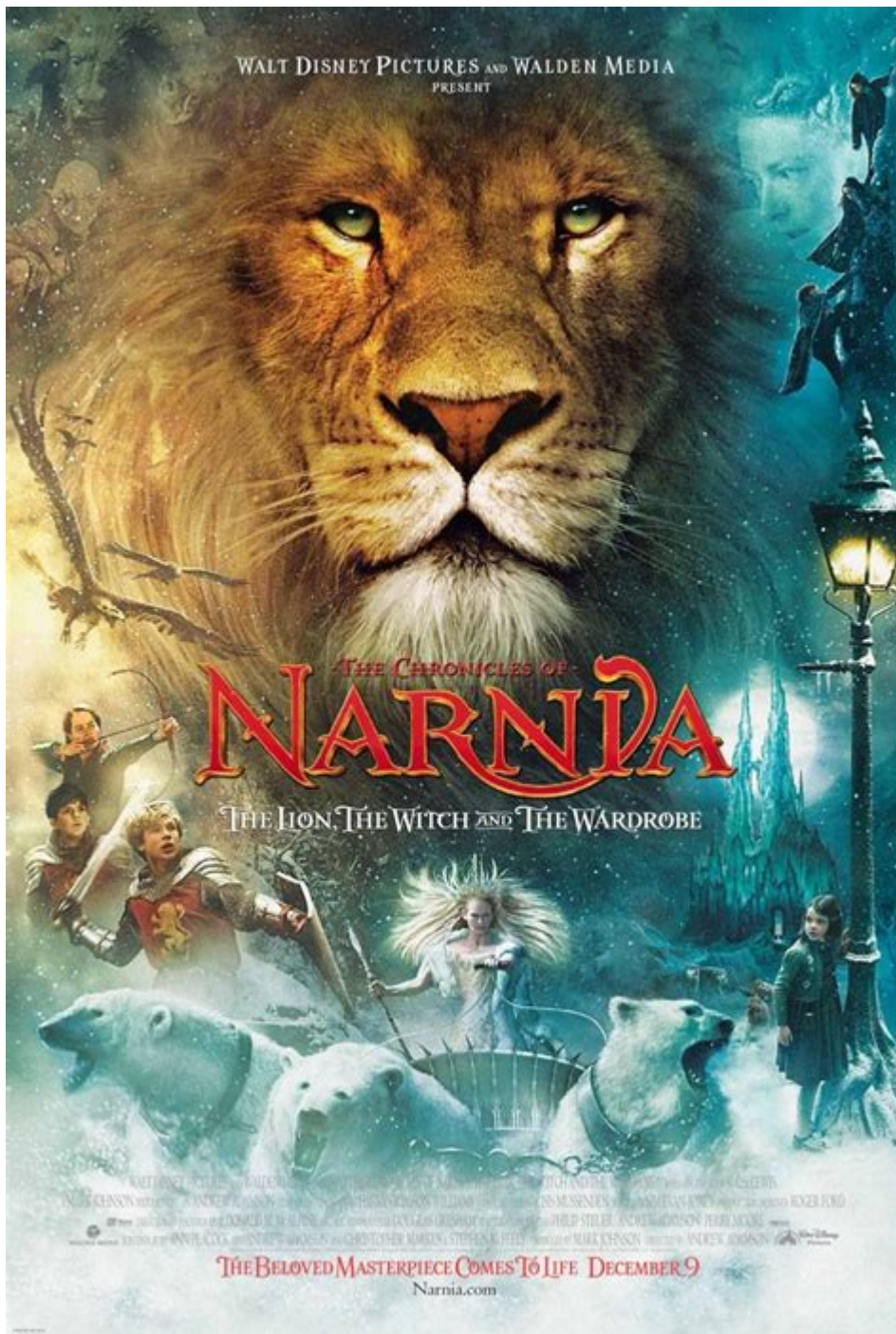


The Lion The Witch And The Wardrobe The



The Lion, the Witch and the Wardrobe is a beloved fantasy novel written by C.S. Lewis and first published in 1950. It is the first book in the Chronicles of Narnia series and has captivated readers of all ages with its rich storytelling, moral depth, and imaginative world. Set in the magical land of Narnia, the story follows four siblings who embark on an extraordinary adventure that explores themes of good versus evil, sacrifice, and redemption. In this article, we will delve into the plot, characters, themes, and legacy of this iconic tale.

Plot Summary

The narrative begins in wartime England, where four siblings—Peter, Susan, Edmund, and Lucy Pevensie—are evacuated to the countryside. While exploring the house of an old Professor, Lucy discovers a wardrobe that serves as a portal to the magical land of Narnia. In Narnia, she meets a faun named Mr. Tumnus, who tells her about the White Witch, a malevolent ruler who has plunged the land into eternal winter.

When Lucy returns to her siblings and recounts her adventure, they are skeptical, especially Edmund, who later visits Narnia himself. He meets the White Witch, who tricks him into betraying his siblings with promises of power and Turkish Delight. Eventually, all four siblings find their way into Narnia, where they learn of a prophecy that states that two Sons of Adam and two Daughters of Eve will help defeat the White Witch and restore peace to the land.

As they ally with Aslan, the great lion and true king of Narnia, the siblings embark on a quest to confront the evil Witch. The story culminates in a climactic battle where Aslan sacrifices himself to save Edmund, only to rise again, symbolizing hope and resurrection. Ultimately, the Pevensies help to overthrow the White Witch, and they reign as kings and queens of Narnia for many years.

Main Characters

The characters in "The Lion, the Witch and the Wardrobe" play pivotal roles in the story's development. Here are some of the key figures:

- **Lucy Pevensie:** The youngest sibling, Lucy is curious, innocent, and the first to discover Narnia. Her bravery and compassion drive much of the story's action.
- **Edmund Pevensie:** Initially portrayed as selfish and treacherous, Edmund's journey is one of redemption. His betrayal and subsequent remorse add depth to his character.
- **Peter Pevensie:** The eldest sibling, Peter embodies courage and leadership. He rises to the occasion as a warrior and protector of his siblings and Narnia.
- **Susan Pevensie:** Often practical and skeptical, Susan represents reason and caution. Her character evolves as she learns to embrace bravery.
- **Aslan:** A powerful and noble lion, Aslan symbolizes Jesus Christ and serves as a figure of sacrifice, redemption, and authority in Narnia.

- **The White Witch:** The primary antagonist, she represents evil and tyranny, using her magic to keep Narnia in an unending winter.

Supporting Characters

The story also features several important supporting characters who enrich the narrative:

- Mr. Tumnus: A faun who befriends Lucy and represents the gentle, kind-hearted inhabitants of Narnia.
- Professor Kirke: The siblings' guardian, who believes in the existence of Narnia and encourages their adventures.
- The Beavers: Mr. and Mrs. Beaver help guide the siblings and provide essential information about Narnia's plight.

Themes

"The Lion, the Witch and the Wardrobe" is rich in themes that resonate deeply with readers. Here are some of the prominent themes explored in the novel:

Good vs. Evil

The struggle between good and evil is central to the story. Aslan represents goodness, hope, and redemption, while the White Witch embodies cruelty, deception, and tyranny. This dichotomy reflects the moral choices individuals must face in their lives.

Redemption and Sacrifice

Edmund's character arc emphasizes the theme of redemption. His betrayal of his siblings leads to a profound realization of his mistakes and a desire for forgiveness. Aslan's sacrifice for Edmund highlights the importance of selflessness and the possibility of redemption through love and sacrifice.

Faith and Belief

The characters in the story must navigate their beliefs about Narnia and Aslan. Lucy's unwavering faith contrasts with Edmund's skepticism, representing the struggle between doubt and belief. Ultimately, faith in Aslan and the goodness of Narnia leads to victory over the Witch.

Coming of Age

The Pevensie siblings undergo significant growth throughout their journey. Facing challenges and making decisions in Narnia forces them to mature and take on responsibilities. This coming-of-age theme resonates with readers as they relate to the characters' struggles and triumphs.

Legacy and Impact

"The Lion, the Witch and the Wardrobe" has left a lasting legacy since its publication. Here are some key aspects of its impact:

Literary Influence

C.S. Lewis's work has inspired countless authors and has become a staple in children's literature. The Chronicles of Narnia series, of which this book is a part, has been translated into numerous languages and continues to be taught in schools worldwide.

Film Adaptations

The story has been adapted into several films, television series, and stage productions. The most notable adaptation was the 2005 film directed by Andrew Adamson, which brought the enchanting world of Narnia to a new generation. The film's success led to adaptations of the subsequent books in the series.

Merchandising and Cultural References

"The Lion, the Witch and the Wardrobe" has inspired a wide range of merchandise, including toys, clothing, and video games. Its characters and themes have permeated popular culture, often referenced in discussions about fantasy literature and moral storytelling.

Conclusion

In conclusion, "The Lion, the Witch and the Wardrobe" remains a timeless classic that continues to enchant readers and viewers alike. Through its compelling characters, rich themes, and imaginative world, C.S. Lewis has created a narrative that explores fundamental human truths and moral lessons. As the Pevensie siblings navigate their challenges in Narnia, they remind us

of the importance of courage, faith, and the enduring battle between good and evil. Whether experienced through the pages of the book or the frames of a film, the journey into Narnia offers a profound and enriching experience that resonates across generations.

Frequently Asked Questions

What is the significance of the wardrobe in 'The Lion, the Witch and the Wardrobe'?

The wardrobe serves as a portal to the magical land of Narnia, representing a gateway between the ordinary world and the extraordinary adventures that await the Pevensie siblings.

Who are the main characters in 'The Lion, the Witch and the Wardrobe'?

The main characters are Peter, Susan, Edmund, and Lucy Pevensie, who are siblings that discover Narnia, along with Aslan, the noble lion, and the White Witch, their primary antagonist.

What role does Aslan play in the story?

Aslan is a Christ-like figure representing sacrifice and redemption. He leads the fight against the White Witch and ultimately sacrifices himself for Edmund's betrayal, only to rise again.

How does Edmund's betrayal affect the story?

Edmund's betrayal leads to significant conflict and sets off a chain of events that culminates in Aslan's sacrifice and the eventual battle for Narnia, highlighting themes of forgiveness and redemption.

What themes are prevalent in 'The Lion, the Witch and the Wardrobe'?

Themes of good versus evil, redemption, sacrifice, and the importance of family and friendship are prevalent throughout the story, reflecting moral and spiritual lessons.

What is the White Witch's role in the story?

The White Witch is the main antagonist, representing evil and tyranny in Narnia. She has cast a spell over the land, causing eternal winter and oppressing its inhabitants.

What happens at the Stone Table?

The Stone Table is the site where Aslan is sacrificed by the White Witch. This event is pivotal, as it symbolizes the ultimate act of sacrifice, which leads to Aslan's resurrection and the defeat of evil.

How do the Pevensie siblings change throughout the story?

The Pevensie siblings grow in courage, responsibility, and maturity as they navigate challenges in Narnia, transitioning from children to leaders who embrace their roles in the fight against the White Witch.

What is the significance of the prophecy in Narnia?

The prophecy states that when two Sons of Adam and two Daughters of Eve sit on the thrones at Cair Paravel, the Witch's reign will end. This prophecy drives the plot and highlights the importance of the Pevensie siblings' roles in Narnia's fate.

How does 'The Lion, the Witch and the Wardrobe' connect to Christian allegory?

The story is filled with Christian allegory, particularly through Aslan's character, who represents Jesus Christ, with themes of sacrifice, resurrection, and the battle between good and evil reflecting Christian narratives.

Find other PDF article:

<https://soc.up.edu.ph/17-scan/Book?trackid=cLB38-1578&title=developing-possible-solutions-readworks-answer-key.pdf>

[The Lion The Witch And The Wardrobe The](#)

lion -

Sep 7, 2024 · lion ...

2lion (G)l-dlelion -

0 2play+lion+lion ...

CLion -

UTF-8 GBK...

LION -

Jan 7, 2023 · LION ...

lionv308 -
v308D-50♂ ...

lion -
Sep 7, 2024 · lion 1. - ...

2lion (G)l-dlelion -
0 2play+lion+lion ...

CLion -
UTF-8 GBK...

LION -
Jan 7, 2023 · LION LION ...

lionv308 -
v308D-50♂ Lion ...

LightcourseLion? -
LightcourseLion? , lightcourse, , ...

Liam Neeson - Filmweb
Liam Neeson - Zanim został aktorem zarabiał na życie jako bokser i kierowca ciężarówki. W 1976 roku przyłączył się do Lyric Players' Theater w Belfaście. Po przeprowadzce do Dublin...

Lion -
LIONLIONwifi1-2wifi80060 ...

...
33360 ...

lionSophiaAdamAdamw
MAEtraining Recipe81.2% Lionmuon muontraining loss
50epochadam ...

Explore "The Lion

[Back to Home](#)