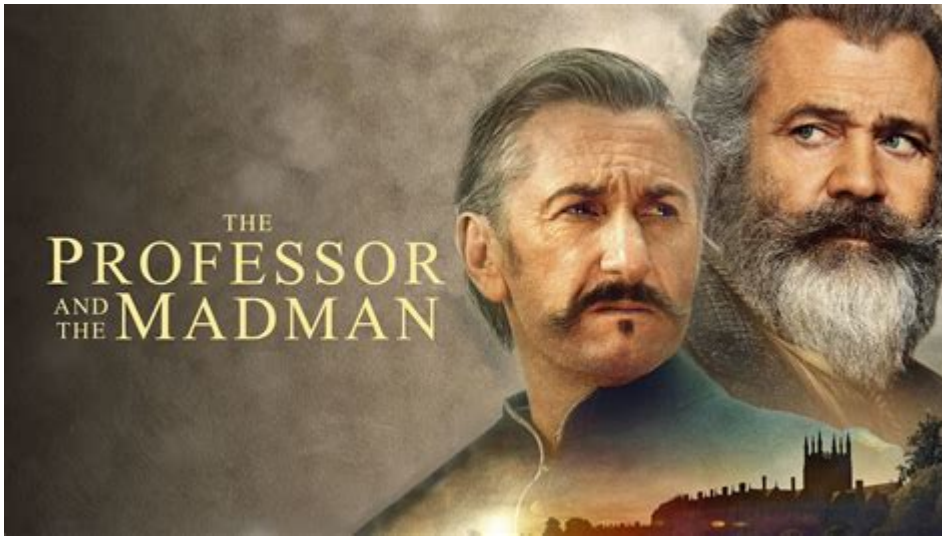


# The Madman And The Professor



**The Madman and the Professor** is a compelling exploration of the complex relationship between two of the most influential figures in the field of philosophy and social thought in the 20th century—Friedrich Nietzsche and Sigmund Freud. Although they never met, their ideas and legacies have intertwined in various ways, influencing countless thinkers and shaping modern psychology, existential philosophy, and cultural criticism. This article delves into their lives, philosophies, and the intersections of their thoughts, shedding light on how their legacies continue to resonate today.

## Background of Friedrich Nietzsche

Friedrich Nietzsche, born in 1844 in Prussia, was a philosopher, cultural critic, poet, and philologist. He is best known for his radical ideas about morality, religion, and the nature of existence. Nietzsche's work often challenged the prevailing moral values of his time, advocating for a reevaluation of morality based on individual strength and creativity rather than herd conformity.

## Key Concepts

1. **Will to Power:** Nietzsche proposed that a fundamental driving force in humans is the "will to power," which he interpreted as a desire for growth, strength, and dominance.
2. **Übermensch:** He introduced the concept of the Übermensch (Overman), an individual who transcends conventional morality to create their own values.
3. **Eternal Recurrence:** This thought experiment invites individuals to consider how they would live if they had to relive their lives repeatedly, emphasizing the importance of living authentically.
4. **Critique of Religion:** Nietzsche famously declared that "God is dead," criticizing traditional religious beliefs and advocating for secular, individualistic values.

existential forms of meaning.

## **Background of Sigmund Freud**

Sigmund Freud, born in 1856 in Austria, is widely regarded as the father of psychoanalysis. His theories and methods revolutionized the understanding of the human mind, particularly the unconscious motivations that drive behavior. Freud's work laid the groundwork for modern psychology and introduced concepts that have permeated various aspects of culture.

### **Key Concepts**

1. **The Unconscious Mind:** Freud proposed that much of human behavior is influenced by unconscious desires and conflicts, often rooted in early childhood experiences.
2. **Oedipus Complex:** This controversial theory suggests that children have subconscious desires for their opposite-sex parent and rivalry with their same-sex parent.
3. **Defense Mechanisms:** Freud identified various strategies individuals use to protect themselves from anxiety and internal conflict, such as repression, denial, and projection.
4. **Dream Analysis:** Freud emphasized the importance of dreams as a pathway to understanding unconscious thoughts, viewing them as a form of wish fulfillment.

## **Intersecting Ideas: Nietzsche and Freud**

Despite their differing approaches—Nietzsche's philosophical inquiries and Freud's psychological theories—there are notable intersections in their ideas. Both thinkers sought to understand the complexities of human existence, the nature of morality, and the underlying forces that drive behavior.

### **Similarities in Thought**

1. **Critique of Conventional Morality:** Both Nietzsche and Freud questioned the foundations of traditional moral systems. Nietzsche argued against herd morality, while Freud viewed guilt and shame as products of social conditioning.
2. **Focus on the Individual:** Nietzsche championed individualism, advocating for personal strength and creativity, while Freud emphasized the individual's internal struggles and unconscious desires.
3. **Exploration of Human Desires:** Nietzsche's will to power aligns with Freud's exploration of primal instincts. Both thinkers recognized that human behavior is often driven by deeper, sometimes darker motives.

4. Existential Inquiry: Nietzsche's existential philosophy and Freud's psychoanalysis both grapple with questions of meaning, identity, and the human condition.

## **Contrasts in Approach**

While there are significant overlaps in their ideas, Nietzsche and Freud also diverged in important ways.

## **Philosophical vs. Psychological Frameworks**

1. Nietzsche's Philosophical Lens: Nietzsche approached the human experience from a philosophical perspective, advocating for the creation of personal values and meaning in a world devoid of inherent purpose.

2. Freud's Scientific Method: Freud utilized a clinical and scientific approach, focusing on observable behaviors and the therapeutic process to uncover unconscious motivations.

## **Views on Human Nature**

1. Optimism vs. Pessimism: Nietzsche held a more optimistic view of human potential, believing in the capacity for greatness and self-overcoming. In contrast, Freud's view of human nature was more pessimistic, emphasizing the conflicts and neuroses that plague individuals.

2. Role of Instincts: Freud posited that human behavior is largely driven by base instincts, while Nietzsche believed in the potential for individuals to transcend these instincts through will and creativity.

## **The Legacy of Nietzsche and Freud**

The legacies of Nietzsche and Freud extend beyond their individual contributions to philosophy and psychology. Their ideas have influenced a range of disciplines, including literature, art, sociology, and cultural studies.

## **Influence on Literature and Art**

1. Existential Literature: Nietzsche's ideas laid the groundwork for existentialist literature, inspiring authors like Jean-Paul Sartre and Albert Camus, who grappled with themes of absurdity and individual agency.

2. Psychoanalytic Criticism: Freud's theories have profoundly impacted literary criticism, leading to psychoanalytic approaches that analyze characters' motivations and conflicts through the lens of Freudian concepts.

## Cultural and Social Impact

1. Postmodern Thought: Both thinkers have been pivotal in shaping postmodern philosophy, challenging grand narratives and advocating for subjective interpretations of truth and morality.
2. Mental Health Awareness: Freud's emphasis on the unconscious and psychological conflict has fostered a greater understanding of mental health, paving the way for therapeutic practices that prioritize emotional well-being.

## The Continuing Relevance of Their Ideas

In contemporary society, the ideas of Nietzsche and Freud continue to resonate, prompting discussions about morality, identity, and the complexities of human behavior.

## Modern Psychology

- The integration of Freudian concepts into therapeutic practices remains prevalent, influencing approaches such as psychodynamic therapy.
- Nietzschean ideas about individualism and self-creation encourage contemporary movements that advocate for personal empowerment and authenticity.

## Cultural Criticism

- Nietzsche's critique of societal norms and values has inspired cultural critics to examine the implications of modernity, consumerism, and the search for meaning in a secular age.
- Freud's exploration of the subconscious continues to inform discussions around media, art, and cultural representations of the human experience.

## Conclusion

The relationship between Friedrich Nietzsche and Sigmund Freud, characterized by both convergence and divergence, represents a rich tapestry of thought that continues to influence contemporary discourse. Their ideas challenge us to confront the complexities of human existence, question prevailing moral frameworks, and explore the depths of our own psyches. As we navigate the intricacies of modern life, the insights offered by "the madman and the professor" remain a vital part of our intellectual heritage, encouraging us to seek a deeper understanding of ourselves and the world around us.

## Frequently Asked Questions

## **What is the main premise of 'The Madman and the Professor'?**

'The Madman and the Professor' explores the relationship between the renowned mathematician Kurt Gödel and his mentor, the philosopher Hans Reichenbach, highlighting their contrasting personalities and intellectual pursuits.

## **How does the book illustrate the concept of madness in the context of genius?**

The book delves into how Gödel's eccentricities and mental health struggles intersect with his groundbreaking work in mathematics, suggesting that genius often coexists with unconventional thinking and personal challenges.

## **What themes are prevalent in 'The Madman and the Professor'?**

Key themes include the nature of truth and reality, the limits of human understanding, the interplay of logic and intuition, and the impact of personal relationships on intellectual development.

## **Who are the authors of 'The Madman and the Professor' and what are their backgrounds?**

The book is authored by Simon Callow and Robert P. Crease, both of whom have extensive backgrounds in philosophy and the history of science, providing a rich context for the exploration of Gödel's and Reichenbach's ideas.

## **In what ways does the book address the philosophical implications of Gödel's incompleteness theorems?**

The book discusses how Gödel's incompleteness theorems challenge the foundations of mathematics and logic, raising questions about the nature of truth and the limits of formal systems in capturing all mathematical truths.

## **What impact did the relationship between Gödel and Reichenbach have on their respective fields?**

Their relationship significantly influenced the development of 20th-century philosophy and mathematics, as Reichenbach's logical empiricism contrasted with Gödel's more abstract and profound views, fostering a rich dialogue between different intellectual traditions.

Find other PDF article:

<https://soc.up.edu.ph/27-proof/Book?trackid=hCm77-9269&title=hiroshima-bbc-history-of-world-war-ii.pdf>

## **[The Madman And The Professor](#)**

3 days ago · ChatGPT 发布日期: 2025-07-26 ChatGPT 发布日期  
GPT-4 发布日期 ...

5 days ago · ChatGPT 模型在 chat.openai.com 网站上被广泛使用，但在使用过程中遇到了一些问题。这些问题包括：模型在某些情况下无法正确理解用户的意图，导致生成的回答与用户期望不符；模型的输出有时会出现重复或冗余的内容，影响用户体验；此外，模型的响应速度在某些高峰时段会有所延迟，给用户带来不便。

3 days ago · ChatGPT | ChatGPT 2025 7. Contribute to chatgpt-zh/chatgpt-china-guide development by creating an account on GitHub.

3 days ago · ChatGPT <https://chat.openai.com>

Apr 22, 2024 · ChatGPT (OpenAI chat gpt) đang trở thành một trào lưu tại Việt Nam. Đây là trí tuệ nhân tạo AI sử dụng trên trình duyệt web và chưa có ứng dụng chính thức. Sau đây là ...

1 day ago · ChatGPT 模型性能提升 10 倍，GPT-4 模型性能提升 10 倍，GPT-3.5 模型性能提升 10 倍 ...

1 day ago · ChatGPT ~ ChatGPT ~ ChatGPT ...

Jul 2, 2025 · ChatGPT GPT-4 4o1 2025 7  
ChatGPT ...

1 day ago · ChatGPT 在 chat.aibox365.cn 上 被 测试 的 结果 非常 令人 惊讶 和 令人 兴奋 ...

6 days ago · chat.lify.vip GPT-4o mini o1 yixiaai.cn AI

Apr 3, 2025 · Based on the description, I understand that you received an email from Microsoft with a single-use code for your email account while you haven't requested any. Receiving an ...

Windows, Surface, Bing, Microsoft Edge, Windows Insider, Microsoft Advertising, Microsoft 365 and Office, Microsoft 365 Insider, Outlook and Microsoft Teams forums are available ...

Jul 3, 2025 · You receive this mandatory email service announcement to update you about the important Changes to your Microsoft Product or Account. 2019 Microsoft Inc., Corporate ...

[Is this a scam email? It says it's in US ... - answers.microsoft.com](#)

Sep 24, 2024 · Hello, I received a suspicious email claiming I had ordered Microsoft 365 Business Premium, it shows in US funds, I'm in Canada and never ordered this. I do have a subscription ...

*I GOT CHARGE \$19.99 FOR SOMETHING CALLED Redmond Waus.*

Oct 27, 2024 · recently got charge \$19.99 The transaction has the name "Microsoft Corporation, Eve Redmond Waus" And I do not recognize this charge And I did not make this transaction.

**cancel Planner Plan 1 email bill for subscription - Microsoft ...**

Jan 29, 2025 · cancel Planner Plan 1 email bill for subscription Hello, I received an email from Microsoft .com about Planner Plan 1 subscription effective today with toll free number to call: 1 ...

[Hacked - Microsoft Community](#)

Apr 1, 2025 · 2-Enforce/ enable your MFA .Reference: Enable per-user multifactor authentication - Microsoft Entra ID | Microsoft Learn In this way your account is secure and you don't need to do ...

**Locked Account Access - Microsoft Community**

Jan 7, 2025 · Microsoft Corporation, One Microsoft Way, Redmond, WA 98052 My whole life and all my emails are on this one Hotmail account and I really need to get access to it.

*Refund Request for Microsoft 365 Personal Subscription*

Jun 23, 2025 · Location: Microsoft Corporation 1 Microsoft Way Redmond, WA 98052 United States I would like to kindly request a refund for the charges incurred, as I have not actively ...

**OneNote sticky notes - Microsoft Community**

Jan 13, 2024 · My sticky notes button was gone so after looking around for online advice I removed the app and reinstalled it. My sticky note button was back but all of my sticky notes ...

Explore the intriguing dynamics between 'the madman and the professor' in our latest article. Discover how their contrasting perspectives shaped modern thought. Learn more!

[Back to Home](#)