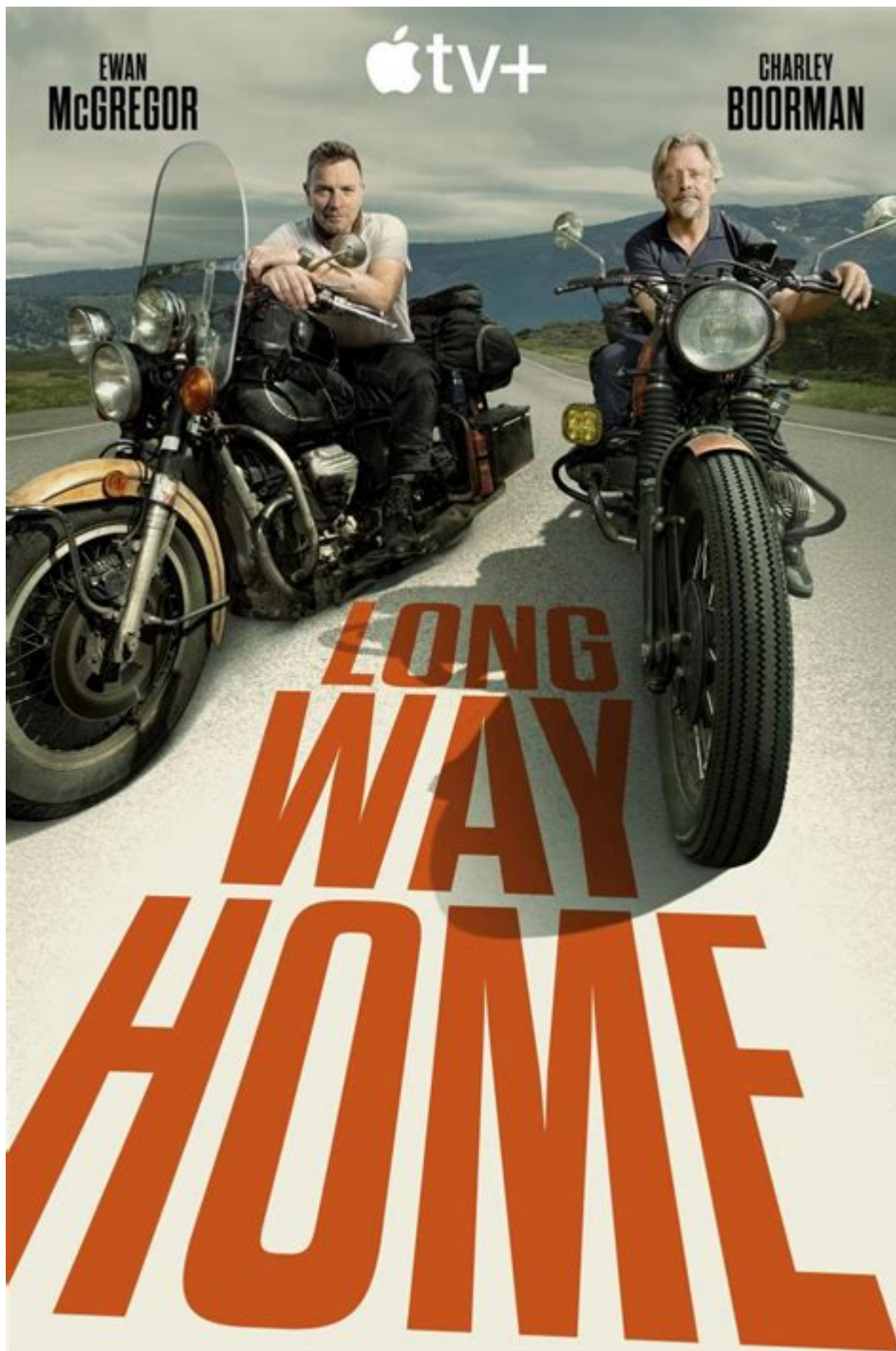


The Long Way To A New Land



The long way to a new land is a phrase that evokes images of arduous journeys, endless horizons, and the relentless pursuit of dreams. Throughout history, people have embarked on these transformative voyages in search of better opportunities, freedom, and a fresh start. This article explores the multifaceted nature of such journeys, examining historical migrations, personal stories, and the profound impact of these movements on both individuals and societies.

The Historical Context of Migrations

Migration is a fundamental aspect of human history. From the early nomadic tribes that wandered the earth in search of food and shelter to the massive movements of populations during the age of exploration, the quest for new lands has defined civilizations. The long way to a new land can be observed through several key historical periods.

1. Prehistoric Migrations

Archaeological evidence suggests that the first humans migrated out of Africa over 100,000 years ago. These early humans traveled vast distances, adapting to new environments and forming communities. The journey was not only a physical challenge but also a process of cultural exchange and evolution.

2. The Age of Exploration

The 15th and 16th centuries marked a significant turning point in human migration, known as the Age of Exploration. European explorers set sail across uncharted oceans in search of new trade routes, lands, and riches. Notable figures like Christopher Columbus, Vasco da Gama, and Ferdinand Magellan embarked on perilous journeys that changed the course of history.

- Motivations for Exploration:
- Economic gain through trade
- Expansion of empires
- Religious conversion
- Scientific curiosity

These explorations led to the colonization of various regions, resulting in profound cultural exchanges and, unfortunately, significant conflicts.

3. The Transatlantic Slave Trade

One of the darkest chapters in the history of migration is the Transatlantic Slave Trade, which forcibly transported millions of Africans to the Americas between the 16th and 19th centuries. This brutal journey, known as the Middle Passage, was characterized by inhumane conditions and immense suffering. The legacies of this migration continue to influence societies today, highlighting the complex nature of the long way to a new land.

The Personal Dimension of Migration

While historical migrations paint a broad picture, individual stories offer a more intimate

understanding of what it means to embark on the long way to a new land. Each journey is unique, shaped by personal circumstances, aspirations, and challenges.

1. Stories of Refugees

In recent years, the plight of refugees has brought attention to contemporary migrations. People fleeing war, persecution, and violence often undertake perilous journeys to find safety and stability. For many, the long way to a new land is not a choice but a necessity.

- Common Reasons for Refugee Migration:
- Armed conflict
- Political persecution
- Ethnic or religious violence
- Climate change and environmental disasters

Refugees face numerous obstacles, including dangerous travel conditions, legal barriers, and cultural differences. Yet, their resilience and determination to build new lives are profoundly inspiring.

2. Immigrant Experiences

Immigrants, too, embody the long way to a new land, often driven by the hope for better economic opportunities or the desire to reunite with family. The immigrant experience is marked by both challenges and triumphs.

- Challenges Faced by Immigrants:
- Language barriers
- Employment difficulties
- Cultural adjustment
- Discrimination and social isolation

Despite these challenges, many immigrants contribute significantly to their new communities, enriching the cultural fabric and driving economic growth.

The Impact of Migration on Societies

Migration is not merely a personal journey; it also shapes the societies that receive newcomers. The long way to a new land can lead to profound changes in cultural dynamics, economic structures, and social norms.

1. Cultural Enrichment

One of the most notable impacts of migration is cultural enrichment. Immigrants bring with

them unique traditions, languages, and perspectives that can enhance the cultural landscape of a society. This diversification fosters creativity and innovation, leading to a more vibrant and dynamic community.

- Examples of Cultural Contributions:
- Culinary diversity
- Artistic expression
- Festivals and celebrations
- Language and literature

Cultural exchanges can lead to a greater understanding and appreciation of different backgrounds, ultimately promoting social cohesion.

2. Economic Contributions

Migrants often play a crucial role in the economy of their host countries. They fill labor shortages, start businesses, and contribute to innovation. Research has consistently shown that immigration can lead to economic growth and job creation.

- Key Economic Contributions of Immigrants:
- Filling essential jobs in sectors like healthcare and agriculture
- Entrepreneurship and business ownership
- Tax contributions and social security funding

The economic benefits of migration not only bolster local economies but also contribute to national growth.

The Challenges of Migration in the Modern World

Despite the many benefits of migration, it is not without its challenges. In recent years, anti-immigrant sentiment has risen in various parts of the world, leading to stricter immigration policies and societal divisions.

1. Political Tensions

Political discourse surrounding immigration often becomes polarized, with debates centering around national identity, security, and economic stability. These tensions can lead to the implementation of policies that negatively impact migrants and refugees.

2. Social Integration

Integrating into a new society can be a daunting challenge for migrants. The long way to a new land is often accompanied by feelings of isolation and alienation. Successful

integration requires support from both the community and the government.

- Strategies for Successful Integration:
- Language and vocational training
- Community support programs
- Anti-discrimination policies
- Encouragement of cultural exchanges

Fostering an inclusive environment can help mitigate the challenges faced by newcomers and promote social harmony.

Conclusion

The long way to a new land is a journey that transcends time and geography. It encapsulates the human spirit's quest for growth, hope, and belonging. As we reflect on the historical and personal dimensions of migration, it becomes clear that these journeys shape not only the lives of individuals but also the very fabric of societies. Embracing the complexities of migration and recognizing its contributions can lead to a more inclusive and understanding world, where the long way to a new land is not just a path taken but a shared human experience.

Frequently Asked Questions

What is 'The Long Way to a New Land' about?

'The Long Way to a New Land' is a historical narrative that explores the journey of immigrants seeking better opportunities in a new country, highlighting their struggles, hopes, and the cultural changes they experience.

Who is the author of 'The Long Way to a New Land'?

The author of 'The Long Way to a New Land' is Joan Lowery Nixon, who is known for her engaging children's and young adult literature.

What themes are prevalent in 'The Long Way to a New Land'?

Key themes include resilience, cultural identity, the immigrant experience, community, and the pursuit of the American Dream.

What historical context does 'The Long Way to a New Land' provide?

The book provides context about the waves of immigration to America during the 19th and early 20th centuries, detailing the socio-economic conditions that prompted individuals to leave their homelands.

How does the protagonist's journey reflect real immigrant experiences?

The protagonist's journey mirrors real immigrant experiences by showcasing the challenges of adapting to a new environment, overcoming language barriers, and the emotional toll of leaving one's home.

What age group is 'The Long Way to a New Land' suitable for?

The book is suitable for middle-grade readers, typically ages 8-12, but it can appeal to anyone interested in historical narratives and immigrant stories.

Are there any notable literary techniques used in 'The Long Way to a New Land'?

Yes, the author employs vivid imagery, rich character development, and a first-person narrative style that immerses readers in the emotional and physical journey of the characters.

What impact has 'The Long Way to a New Land' had on readers and literature?

The book has had a significant impact by raising awareness about the immigrant experience, inspiring empathy and understanding, and encouraging discussions about cultural diversity and acceptance.

Find other PDF article:

<https://soc.up.edu.ph/28-font/Book?docid=eZL91-1886&title=holy-rosary-guide-bisaya-version.pdf>

[The Long Way To A New Land](#)

long -

long long [lɒŋ] [lɑːŋ] adj. ...

as long as -

Jul 13, 2015 · as long as [æz lɒŋ æz] so long as [səʊ lɒŋ æz] as long as [sɒ lɒŋ æz] ...

AS LONG AS -

AS LONG AS... AS LONG AS [æz lɒŋ æz] As long as needed as long again as As long as Hello ...

as long as you love me -

Mar 24, 2006 · as long as you love me as long as u love me. although loneliness has always been a friend of mine. i'm leaving my life in ur ...

as long as -

as long as as long as [æz lɒŋ æz] [æz lɔ:ŋ æz] 1
As long as I

long -

Aug 3, 2012 · long longer , longest 1 measuring or covering a great length or distance, or a greater length or distance than usual She had long ...

/ -

Mar 15, 2015 · A4 “” “” ...

Taylor swift LONG LIVE -

Taylor swift LONG LIVE Long Live · · · I said remember this moment ...

How long -

Feb 9, 2011 · How long how long “ for+ “since+ “since+ ...

long -

long [lɒŋ] [lɔ:ŋ] adj. adv. v. n. She was ...

long -

long long [lɒŋ] [lɔ:ŋ] adj. adv. n. ...

as long as so long as -

Jul 13, 2015 · as long as [æz lɒŋ æz] so long as [səʊ lɒŋ æz] as long as so long as “” 1 He paused enough to consider the options but ...

AS LONG AS -

AS LONG AS... AS LONG AS [æz lɒŋ æz] As long as needed as long again as As long as Hello As Long As Useful As Long As Life 1 As long as your competitor is up for the challenge, you might as well go for it ...

as long as you love me -

Mar 24, 2006 · as long as you love me as long as u love me. although loneliness has always been a friend of mine. i'm leaving my life in ur hands. people say i'm crazy that i am blind. risking it all in a glance. how you got me blind is still a mystery. ...

as long as -

as long as as long as [æz lɒŋ æz] [æz lɔ:ŋ æz] 1
As long as I

long -

Aug 3, 2012 · long longer , longest 1 measuring or covering a great length or distance, or a greater length or distance than usual She had long dark hair. He walked down the long corridor. It was the world's longest bridge. ...

/-

Mar 15, 2015 · A4 “” “”

Taylor swift LONG LIVE -

Taylor swift LONG LIVE Long Live · · · I said remember this moment In the back of my

How long -

Feb 9, 2011 · How long how long “ for+ “ “since+ “ “since+ how long “It’s+ “ “About+ “ how long 1 ...

long -

long [lɒŋ] [lɔːŋ] adj. adv. v. n. She was slender and had long dark hair. 1 ...

Embark on a journey with "The Long Way to a New Land." Discover the challenges and triumphs of exploration. Learn more about this inspiring adventure today!

[Back to Home](#)