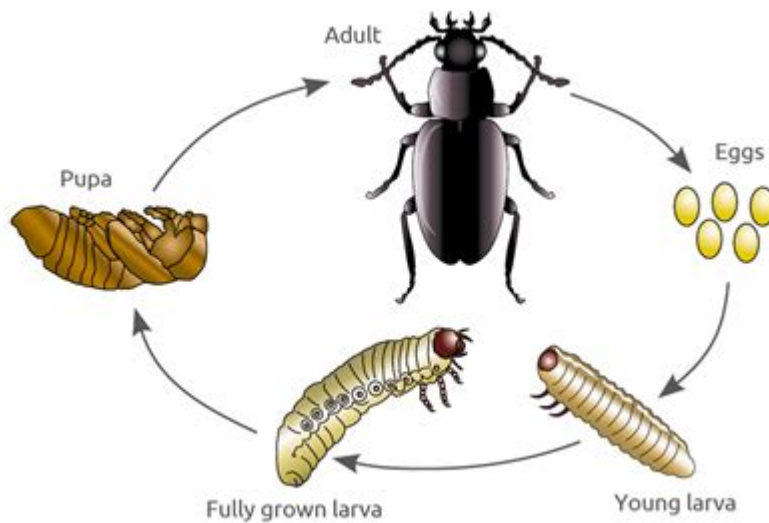


The Life Cycle Of A Beetle



The life cycle of a beetle is a fascinating journey that showcases the remarkable transformation these insects undergo from egg to adult. Beetles, belonging to the order Coleoptera, are one of the most diverse groups of animals on the planet, with over 350,000 known species. Understanding their life cycle not only helps us appreciate their ecological roles but also their significance in various environments. This article will explore the stages of a beetle's life cycle, the characteristics of each stage, and the factors that influence their development.

Stages of the Beetle Life Cycle

The life cycle of a beetle consists of four main stages:

1. Egg
2. Larva
3. Pupa
4. Adult

Each of these stages plays a crucial role in the beetle's development and adaptation to its environment.

1. Egg Stage

The life cycle of a beetle begins in the egg stage. Female beetles typically lay eggs in environments that offer suitable conditions for the larvae.

- **Location:** Eggs are often deposited in soil, decaying wood, leaf litter, or even within the host plants, depending on the species.
- **Number of Eggs:** A single female can lay anywhere from a few dozen to several hundred eggs, depending on the species.
- **Incubation Period:** The incubation period can vary from a few days to several weeks, influenced by temperature and humidity.

During this stage, the eggs are vulnerable to predators, environmental changes, and diseases. Successful hatching is critical for the continuation of the species.

2. Larva Stage

Once the eggs hatch, the beetle emerges as a larva, which is often referred to as a grub. This stage is characterized by rapid growth and development.

- **Appearance:** Beetle larvae typically have elongated, soft bodies, and they may vary in color depending on the species. They often lack legs or have very few.
- **Feeding Habits:** Larvae are voracious eaters. They primarily feed on organic material, such as decaying wood, leaves, or other plant matter. Some species may feed on fungi or even other insects.
- **Growth:** The larval stage can last from several weeks to several months. During this time, the larvae may molt multiple times (usually 3 to 6 times) as they grow, shedding their exoskeleton to accommodate their increasing size.

This stage is crucial for energy accumulation, preparing the larvae for the next phase of their life cycle.

3. Pupa Stage

The third stage of the life cycle of a beetle is the pupal stage. This is a transformative phase where the larva undergoes metamorphosis.

- **Transformation:** The larva typically finds a safe place to pupate, often in soil or within a cocoon made from silk or debris. During this time, the larva's body breaks down and reorganizes into its adult form.
- **Duration:** The pupal stage can last from a few days to several months, depending on environmental conditions and the species.
- **Growth Activity:** Pupae are usually immobile and do not feed. However, they undergo significant internal restructuring as they develop wings, legs, and other adult features.

The pupa is a critical stage in the life cycle, as it marks the transition from a feeding, growing organism to a reproductive adult.

4. Adult Stage

After the pupal stage, the beetle emerges as an adult. This stage marks the final form in the beetle's life cycle.

- **Appearance:** Adult beetles have hard, protective exoskeletons and well-developed wings, though some species may be wingless. Their color and shape can vary drastically among different species.
- **Feeding:** Adult beetles have varied diets. Some are herbivores, feeding on plants, while others may be predators, scavengers, or decomposers.
- **Reproduction:** Adult beetles will eventually mate, and females will lay eggs to begin the cycle anew. Some species can reproduce multiple times in a single season.

The adult stage can last from a few months to several years, depending on the species and environmental conditions.

Factors Influencing the Beetle Life Cycle

Various factors can significantly influence the life cycle of a beetle, including:

1. Environmental Conditions

Temperature, humidity, and availability of food sources can affect the duration of each life stage. For example:

- Higher temperatures may speed up the development of eggs and larvae.
- Moisture levels can affect where eggs are laid and how larvae can thrive.

2. Predation and Parasitism

Beetles face threats from predators such as birds, mammals, and other insects, as well as parasitic organisms that may target eggs, larvae, or pupae.

3. Habitat Availability

The availability of suitable habitats for laying eggs and feeding can impact the population dynamics of beetles. Habitat destruction can lead to declines in beetle populations.

Conclusion

The life cycle of a beetle is a complex and intricate process that highlights the adaptability and resilience of these remarkable insects. From the vulnerable egg stage to the transformative pupal stage and finally into the diverse adult forms, beetles play essential roles in ecosystems around the world. Understanding their life cycle not only enhances our appreciation for these creatures but also underscores the importance of conserving their habitats for future generations. Whether you are a casual observer or an entomologist, the life cycle of a beetle offers endless opportunities for discovery and learning.

Frequently Asked Questions

What are the main stages in the life cycle of a

beetle?

The life cycle of a beetle includes four main stages: egg, larva, pupa, and adult.

How long does it typically take for a beetle to complete its life cycle?

The duration of a beetle's life cycle can vary widely depending on the species, but it generally takes several weeks to several months to complete.

What is the role of the larval stage in a beetle's life cycle?

The larval stage is primarily focused on growth and feeding, allowing the beetle to accumulate energy reserves for its transformation into an adult.

How do environmental factors influence the life cycle of beetles?

Environmental factors such as temperature, humidity, and food availability can significantly affect the growth rates and developmental times of beetles.

What are some common predators of beetles during their life cycle?

Common predators include birds, frogs, spiders, and other insects, which can target beetles at various stages of their life cycle.

Can beetles undergo metamorphosis, and if so, how does it occur?

Yes, beetles undergo complete metamorphosis, which involves distinct changes in form during the pupal stage, allowing them to emerge as fully developed adults.

Find other PDF article:

<https://soc.up.edu.ph/62-type/pdf?docid=owU95-9856&title=this-is-just-to-say-poem-analysis.pdf>

The Life Cycle Of A Beetle

Our Christian Life and Ministry —Meeting Workbook

Life and Ministry weekly meeting schedule. Study material for Treasures From God's Word, Apply Yourself to the Field Ministry, Living as Christians.

The Road to Life - JW.ORG

Jul 21, 2025 · Seeking great things for Jehovah from our youth on helps us stay on the road to life.

The Life of Jesus—From His Birth to His Death | Bible Stories

Jesus' birth, events in his childhood and youth. Jesus' baptism, the years of preaching, teaching, and miracles. The death of Jesus Christ.

Guided Bible Study Course - JW.ORG

A free Bible course with a personal instructor but without commitment. You'll get a Bible if you need one along with the interactive Bible study guide "Enjoy Life Forever!"

JW Life and Ministry Meeting Schedule April 21-27, 2025

The blessings that Jehovah showers on his servants during these difficult last days help us to cope and even enrich our life. (Ps 4:3; Pr 10:22) Read the following scriptures.

Appreciate the Gift of Life - JW.ORG

Life can be full of wonderful experiences. Even when we face problems, we can usually enjoy some aspects of life. How can we show that we appreciate the gift of life? And what is the most important reason for doing that? 1. Why should we appreciate life? We should appreciate life because it is a gift from our loving Father, Jehovah.

Our Purpose in Life - JW.ORG

Our Purpose in Life At the outset, a brief description of Jehovah's Witnesses and our purpose in life will be helpful. We are an international body of Christians who can be found in more than 200 lands throughout the world. Our way of worshiping God involves our entire outlook and manner of life. Since we are convinced that God is a real being, we consider it vital to maintain a close ...

Enjoy Life Forever!—Introductory Bible Lessons - JW.ORG

Enjoy Life Forever!—Introductory Bible Lessons This brochure can serve as an introduction to your personal Bible study as part of our free Bible study program.

JW Life and Ministry Meeting Schedule July 28-August 3, 2025

A disease outbreak, a natural disaster, civil unrest, war, or persecution can strike suddenly. When adversities occur, the affected Christians pull together to help and encourage one another. However, even if we are not affected directly, we feel the pain of our fellow Christians and do our best to assist them. — 1Co 12:25, 26.

Section 2 - JW.ORG

Library Books & Brochures Enjoy Life Forever!—An Interactive Bible Course READ IN

Our Christian Life and Ministry —Meeting Workbook

Life and Ministry weekly meeting schedule. Study material for Treasures From God's Word, Apply Yourself to the Field Ministry, Living as Christians.

The Road to Life - JW.ORG

Jul 21, 2025 · Seeking great things for Jehovah from our youth on helps us stay on the road to life.

The Life of Jesus—From His Birth to His Death | Bible Stories

Jesus' birth, events in his childhood and youth. Jesus' baptism, the years of preaching, teaching, and miracles. The death of Jesus Christ.

[Guided Bible Study Course - JW.ORG](#)

A free Bible course with a personal instructor but without commitment. You'll get a Bible if you need one along with the interactive Bible study guide "Enjoy Life Forever!"

JW Life and Ministry Meeting Schedule April 21-27, 2025

The blessings that Jehovah showers on his servants during these difficult last days help us to cope and even enrich our life. (Ps 4:3; Pr 10:22) Read the following scriptures.

Appreciate the Gift of Life - JW.ORG

Life can be full of wonderful experiences. Even when we face problems, we can usually enjoy some aspects of life. How can we show that we appreciate the gift of life? And what is the ...

Our Purpose in Life - JW.ORG

Our Purpose in Life At the outset, a brief description of Jehovah's Witnesses and our purpose in life will be helpful. We are an international body of Christians who can be found in more than ...

Enjoy Life Forever!—Introductory Bible Lessons - JW.ORG

Enjoy Life Forever!—Introductory Bible Lessons This brochure can serve as an introduction to your personal Bible study as part of our free Bible study program.

JW Life and Ministry Meeting Schedule July 28-August 3, 2025

A disease outbreak, a natural disaster, civil unrest, war, or persecution can strike suddenly. When adversities occur, the affected Christians pull together to help and encourage one another. ...

Section 2 - JW.ORG

Library Books & Brochures Enjoy Life Forever!—An Interactive Bible Course READ IN

Explore the fascinating life cycle of a beetle

[Back to Home](#)