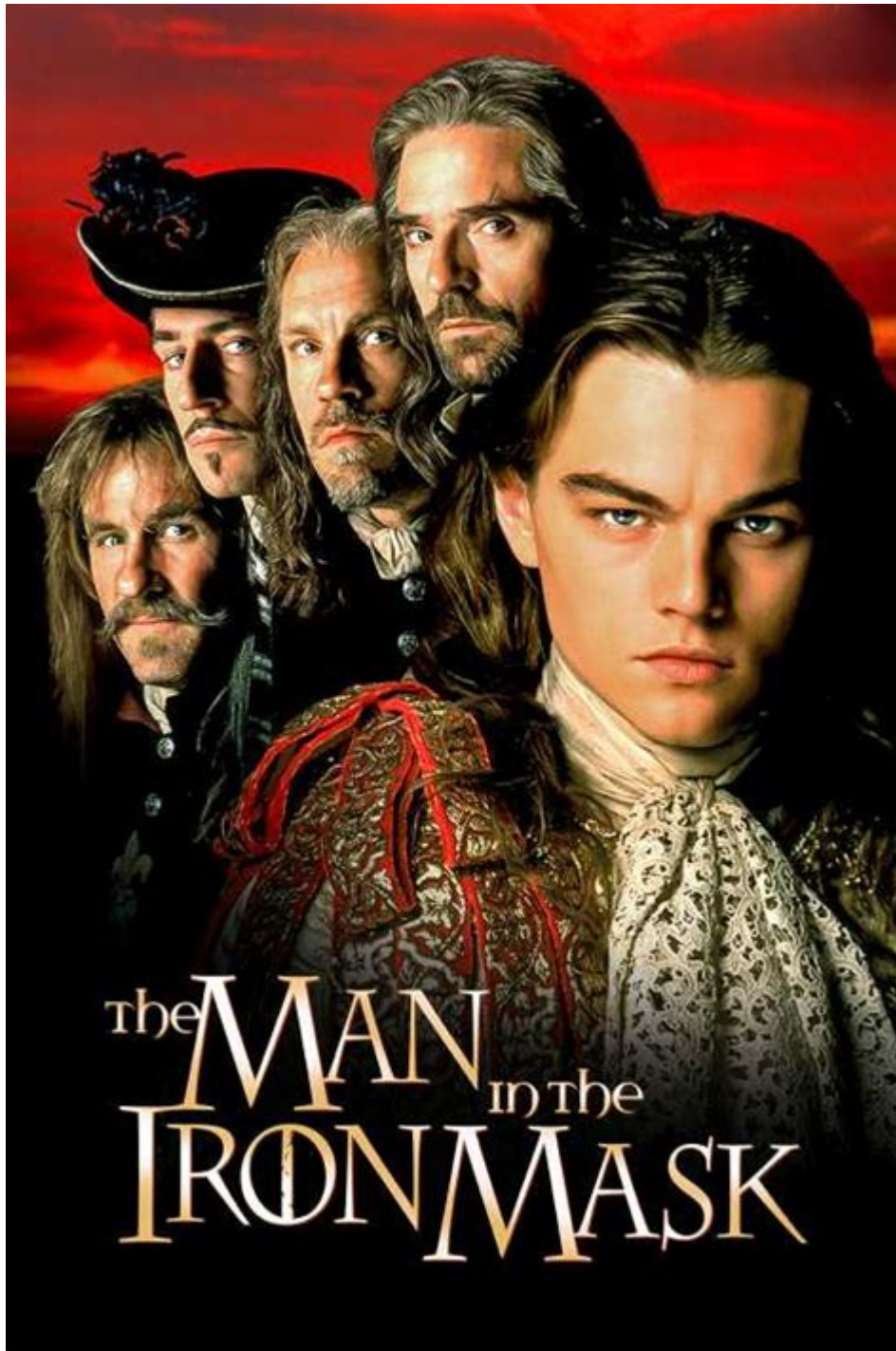


The Man In The Iron Mask



The man in the iron mask is one of history's most intriguing mysteries, captivating the imaginations of historians, writers, and filmmakers alike. This enigmatic figure, who lived during the 17th century in France, is often shrouded in a veil of speculation regarding his true identity and the reasons behind his unusual imprisonment. The story of the man in the iron mask not only reflects the social and political climate of his time but also raises questions about power, secrecy, and the human condition.

Historical Context

The Reign of Louis XIV

To understand the significance of the man in the iron mask, it is essential to examine the historical context of his existence. The late 17th century was marked by the reign of Louis XIV, known as the Sun King, who ruled France from 1643 to 1715. Louis XIV is remembered for his absolute monarchy, lavish lifestyle, and the centralization of power. His reign was characterized by significant political and military developments, as well as cultural and artistic advancements.

- Centralization of Power: Louis XIV sought to consolidate power in the monarchy, diminishing the influence of the nobility and establishing a strong central government.
- Military Ambitions: The king engaged in numerous wars to expand French territory, which strained the economy and led to widespread discontent.
- Cultural Flourishing: This period saw a blossoming of the arts, epitomized by the construction of the Palace of Versailles, which became a symbol of royal opulence.

Prisoner of the Bastille

The man in the iron mask is believed to have been imprisoned in various locations, with the Bastille being one of the most notable. The Bastille was a fortress and state prison in Paris that was often used to detain political prisoners. The secrecy surrounding the identities and reasons behind such imprisonments was a common practice during an era when dissent against the monarchy could lead to severe consequences.

- Political Prisoners: The Bastille housed individuals who posed a threat to the crown, showcasing the lengths to which Louis XIV would go to silence opposition.
- Secrecy and Control: The king's desire for control extended to how prisoners were treated and kept, often leading to extreme measures, including the use of masks to conceal identities.

The Legend of the Iron Mask

Origins of the Legend

The legend of the man in the iron mask began to take shape in the late 17th century, fueled by rumors and speculations. Accounts of a masked prisoner were recorded by various authors, leading to a wide array of theories regarding his identity.

- Dumas and Literature: The French writer Alexandre Dumas brought the tale to a broader audience in his novel "The Vicomte of Bragelonne," where he depicts the man in the iron mask as the twin brother of Louis XIV. This fictional

account sparked public imagination and interest in the mystery.

- **Historical Documents:** Primary sources, such as letters and memoirs from the time, reference a masked prisoner, but details are often contradictory or vague.

The Mask Itself

One of the most captivating aspects of this narrative is the iron mask itself. Descriptions of the mask vary widely, leading to further mystique and debate.

- **Material and Design:** Some accounts suggest that the mask was made of iron, while others claim it was made of leather. The design is said to have been fitted tightly, preventing the prisoner from speaking clearly.
- **Symbolism:** The mask has come to symbolize the suppression of identity and the lengths to which those in power will go to maintain control. It embodies the idea that some truths are too dangerous to reveal.

Theories Surrounding the Identity of the Man in the Iron Mask

The identity of the man in the iron mask has been the subject of numerous theories, each more fascinating than the last. Here are some of the most prominent speculations:

1. **Louis XIV's Twin Brother:** This theory, popularized by Dumas, posits that the masked man was the illegitimate twin of Louis XIV, hidden away to prevent a succession crisis.
2. **Political Rival:** Some historians suggest that the prisoner was a political rival or a member of the nobility who threatened Louis XIV's reign. This theory aligns with the king's notorious paranoia regarding threats to his power.
3. **A High-ranking Official:** Another theory proposes that the man was a high-ranking official who had fallen out of favor with the king, necessitating his removal from public life.
4. **Various Other Identities:** Over the years, various individuals have been suggested, including the Duke of Beaufort and even the brother of the Queen of France. Each theory reflects the intricacies of court politics during Louis XIV's reign.

Evidence and Historical Reliability

The evidence surrounding the man in the iron mask is complex and often unreliable. Historical accounts are frequently based on speculation, leading to a lack of consensus among historians.

- **Limited Documentation:** There are very few contemporary documents that conclusively identify the prisoner or provide clear reasons for his imprisonment.
- **Contradictory Accounts:** Many accounts from the period contradict one another, making it difficult to piece together a coherent narrative.

The Man in the Iron Mask in Popular Culture

The story of the man in the iron mask has inspired countless adaptations in literature, film, and other forms of media. His tale continues to resonate with audiences, symbolizing the universal themes of identity, power, and freedom.

Literature and Theater

- **Dumas' Influence:** Alexandre Dumas' portrayal of the man in the iron mask has had a lasting impact on how the story is understood and retold. His narrative has led to adaptations in various forms, including stage plays and novels.
- **Modern Novels:** Several contemporary authors have revisited the tale, weaving it into historical fiction that explores the lives of those in power and the consequences of their actions.

Film and Television

- **Film Adaptations:** The man in the iron mask has been depicted in numerous films, including the 1998 adaptation directed by Randall Wallace, which presents a fictionalized account of the events surrounding the masked prisoner.
- **Television Series:** The story has also been featured in various television series, often as a subplot that explores the themes of secrecy and identity.

Conclusion

The story of the man in the iron mask remains a compelling mystery that has sparked endless speculation and debate. His life, surrounded by secrecy and intrigue, serves as a reflection of the tumultuous times in which he lived. The various theories about his identity and the reasons for his imprisonment demonstrate the complexities of power and the human desire for recognition. As historians and storytellers continue to explore this enigma, the man in the iron mask endures as a symbol of the unknown, reminding us that some mysteries may never be fully unraveled.

Frequently Asked Questions

Who was the Man in the Iron Mask?

The Man in the Iron Mask was an unidentified prisoner in France during the reign of Louis XIV, famously known for wearing a mask made of iron.

What are the most popular theories about the identity of the Man in the Iron Mask?

Some theories suggest he was the twin brother of Louis XIV, a political

rival, or even a high-profile prisoner like General de La Fayette.

What historical documents mention the Man in the Iron Mask?

Historical documents from the 17th century, including writings by Voltaire and other contemporaries, reference the masked prisoner, but they often lack definitive details.

How did the legend of the Man in the Iron Mask influence popular culture?

The legend has inspired numerous works of literature, films, and plays, including Alexandre Dumas's 'The Vicomte de Bragelonne' and several film adaptations.

What was the fate of the Man in the Iron Mask?

The Man in the Iron Mask died in prison in 1703, and the exact circumstances of his death remain unclear, contributing to the mystery surrounding his identity.

Why did the Man in the Iron Mask wear a mask?

He wore a mask to conceal his identity, likely to prevent anyone from knowing who he was, as his identity was deemed a closely guarded secret.

Where was the Man in the Iron Mask imprisoned?

He was imprisoned in several locations, including the Bastille and the Fort de Sainte-Marguerite, near Cannes.

What impact did the Man in the Iron Mask have on French history?

His imprisonment reflected the absolute power of Louis XIV and the political intrigue of the time, becoming a symbol of the mystery and tyranny of the monarchy.

Are there any modern investigations into the identity of the Man in the Iron Mask?

Yes, historians and researchers continue to investigate through historical texts, forensic studies, and analysis of 17th-century prison records.

How has the Man in the Iron Mask been portrayed in films?

He has been portrayed in various films, such as 'The Man in the Iron Mask' (1998), where Leonardo DiCaprio played both the king and the masked prisoner, emphasizing themes of identity and justice.

Find other PDF article:

<https://soc.up.edu.ph/21-brief/Book?trackid=DFp71-0646&title=extreme-weight-loss-makeover-diet->

The Man In The Iron Mask

□□□□□ *man what can I say* □□□□□ - □□

man what can I say man, man, what can I say 32

manmen_____

manmen1manmenman2manThe chick initially has no fear of man ...

$$\square\square\square\square\square\square\square\square\square - \square\square$$

Sigma Man

man men -

Jan 29, 2021 · manmenman manmen 1man 2men
 1manman ...

□□□□□□□□□□ - □□□□

2023-12-04 · 00:00:00

woman\men\women\man.□□□□□□□□□□ □□□□

$\max_{\theta \in \Theta} \inf_{\mu \in M} L(\theta, \mu) = 2 \max_{\theta \in \Theta} \inf_{\mu \in M} L(\theta, \mu)$

Man→**Men**□□□□□,□□~~~ - □□□□

man man men man ...

Running Man ...

Running Man

MENMAN!!!!!!?_!!!!

MEN MAN ! ? MEN MAN 1 man

□□ - □□□□□□□□

2011 年 1 月 ...

man what can I say -

man what can I say man, man, what can I say 32

manmen

manmen1manmenmenman2manThe chick initially has no fear of man ...

□□□□□□□□ - □□

Sigma Man

man men -

Jan 29, 2021 · manmenman manmen 1man 2men
1manman ...

-

2023-12-04 ·

woman\men\women\man._

man 2man "... ” ”

ManMen,~~ -

manman menman
...

BRunning Man ...

BRunning Man

MENMAN!_

MENMAN!MEN1man

-

2011 1
...

Uncover the mystery of The Man in the Iron Mask. Explore theories

[Back to Home](#)