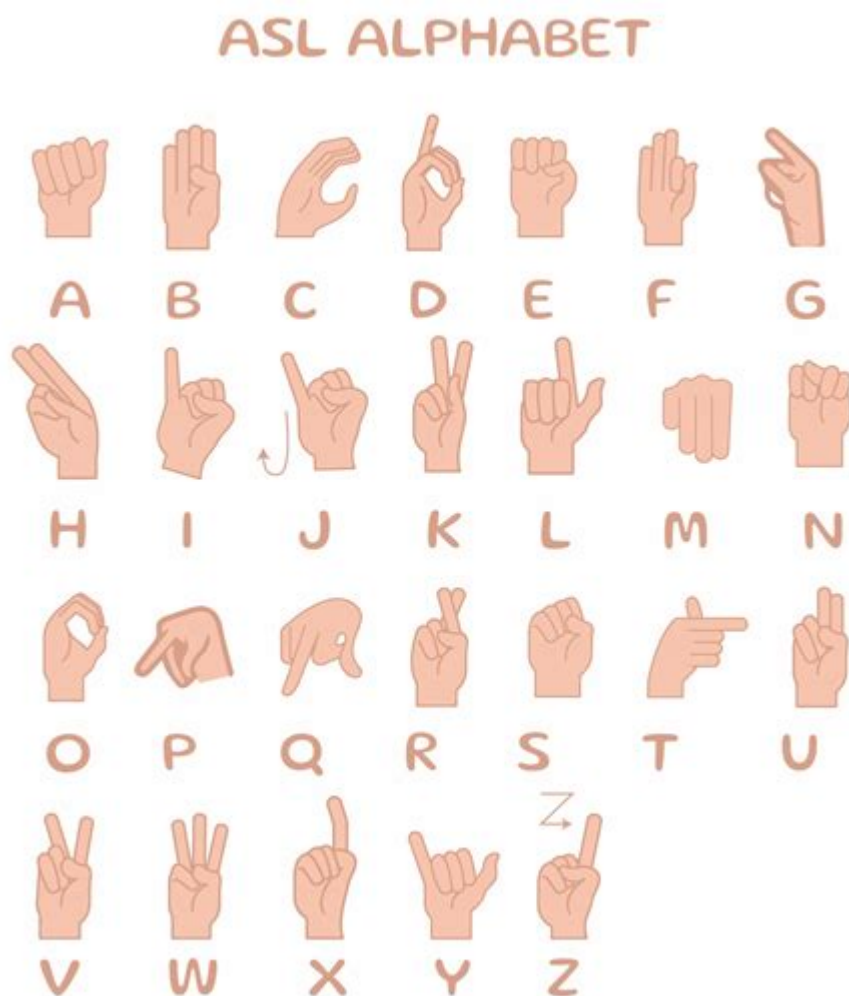


The N Word In Sign Language



The N Word in Sign Language is a sensitive and complex topic that intersects with issues of race, culture, and communication. The term is widely recognized as a derogatory racial slur, particularly in the context of African American history and culture. Understanding how this word is represented and discussed in sign language requires a nuanced examination of both language and social dynamics. This article will explore the implications of using the N-word in sign language, its representation in various sign languages, and the broader conversation surrounding the use of racially sensitive language in a signed context.

Understanding the N Word: Historical Context

The N-word has a painful history rooted in racism and oppression. It has been used to demean and dehumanize people of African descent for centuries. The impact of this word is profound, leading to its rejection in spoken and written forms, particularly within African American communities. This historical context is crucial when discussing any representation of the N-word in sign language.

The Role of Language in Cultural Identity

Language is more than a means of communication; it is a vital aspect of cultural identity. For many deaf individuals, particularly those in the Black Deaf community, sign language serves as a primary mode of communication. The intersection of race and language can complicate how terms like the N-word are interpreted and expressed in sign language.

Sign Language Variations

Different countries and regions have their own sign languages, each with unique vocabulary and grammar. The representation of the N-word can differ significantly across these languages:

- **American Sign Language (ASL)**
- **British Sign Language (BSL)**
- **Australian Sign Language (Auslan)**
- **Langue des Signes Française (LSF)**

American Sign Language (ASL)

In ASL, the N-word is often signed using a specific sign that may vary in expression based on the context and the signer's intention. However, it is crucial to note that many in the Deaf community, especially within African American circles, may choose to avoid using the sign altogether due to its derogatory implications. Instead, alternative signs or phrases may be used to convey the intended meaning without invoking the historical baggage associated with the term.

British Sign Language (BSL) and Other Variations

In BSL, the representation of the N-word can also be sensitive. The sign may exist, but similar to ASL, many users may opt not to use it. The decision to sign or not sign the term often reflects the user's awareness of its impact and the desire to foster respectful communication.

The Impact of Using the N Word in Sign Language

The decision to use or avoid the N-word in sign language is not merely a linguistic choice; it carries significant social implications. Here are some factors to consider:

1. **Respect and Sensitivity:** Using the N-word, whether in spoken or signed form, can perpetuate harm. Sign language interpreters and users must be sensitive to the feelings and perspectives of those impacted by the term.
2. **Community Dynamics:** In the Black Deaf community, there are varied opinions on the use of the N-word. Some may reclaim the word within their cultural context, while others firmly oppose its use regardless of context.
3. **Educational Implications:** Understanding the historical and cultural significance of the N-word is essential for educators and interpreters working with diverse populations, ensuring they approach the subject with care.

Interpreters and Their Role

Interpreters play a crucial role in bridging communication gaps in diverse settings, including educational environments, public events, and social gatherings. When confronted with the N-word, interpreters must navigate the complexities of language while being mindful of their audience. Some strategies include:

- Discussing the term with clients to gauge their preferences.
- Using culturally appropriate alternatives when possible.
- Maintaining awareness of the historical context and its impact on communication.

Reclaiming Language: A Double-Edged Sword

In some contexts, members of the African American community have sought to reclaim the N-word, transforming it from a tool of oppression into a term of endearment or solidarity. This reclamation is a powerful linguistic phenomenon, but its application in sign language can be contentious.

The Role of Context

The context in which the N-word is used significantly influences its interpretation. For instance, within a conversation among friends who share an understanding of its reclaimed meaning, the term might be accepted. However, in a formal setting or among individuals who do not share the same cultural background, its use could be damaging and offensive.

The Broader Conversation on Language and Race

The discussion surrounding the N-word in sign language is part of a larger conversation about race, identity, and the power of language. It raises important questions about how communities communicate their histories, struggles, and triumphs.

Promoting Inclusive Language Practices

To foster inclusive communication, individuals and communities should engage in discussions about language usage, particularly regarding racially sensitive terms. Some strategies for promoting inclusive language practices include:

1. **Encouraging Open Dialogue:** Create spaces for conversations about language and its implications, helping community members express their feelings and experiences.
2. **Educating on Cultural Sensitivity:** Provide resources and training on the impact of racially charged language to enhance understanding and empathy.
3. **Empowering the Community:** Support individuals in making informed choices about language use, fostering a culture of respect and understanding.

Conclusion

The N-word in sign language serves as a reflection of broader societal issues concerning race, identity, and language. It is a term laden with historical significance and emotional weight, making its representation in sign language a topic that requires careful consideration. As communities continue to engage in conversations about language and its implications, it is essential to prioritize respect, sensitivity, and understanding. By fostering an inclusive dialogue about the use of the N-word in sign language, we can work towards a more respectful and informed linguistic landscape that honors the experiences of all individuals.

Frequently Asked Questions

What does the 'N-word' refer to in the context of sign language?

In sign language, the 'N-word' refers to a highly offensive racial slur historically used against Black individuals. It is important to understand the cultural context and the impact of using this term.

Is there a specific sign for the 'N-word' in ASL?

American Sign Language (ASL) does not have a specific sign for the 'N-word' as it is considered derogatory and disrespectful. Instead, many prefer to use respectful language when discussing race.

How do Deaf communities address the use of the 'N-word'?

Deaf communities often engage in discussions about the use of the 'N-word' to promote awareness and respect, emphasizing the importance of context and the historical significance of the term.

What are the implications of using the 'N-word' in sign language?

Using the 'N-word' in any form, including sign language, can perpetuate racism and cause harm. It is essential to avoid using the term and instead promote understanding and respectful dialogue.

Can the 'N-word' be signed in an educational context?

In educational contexts, discussions about the 'N-word' may occur to highlight its impact and history, but it is crucial to approach the topic sensitively and avoid using the term itself.

How can educators address the topic of the 'N-word' with Deaf students?

Educators should create a safe space for discussion, provide historical context, and encourage students to share their feelings about the word, focusing on respect and understanding rather than its usage.

What resources are available for understanding the 'N-word' in a sign language context?

Resources such as workshops, community discussions, and literature on race and language can help individuals understand the implications of the 'N-word' in both spoken and signed languages.

Find other PDF article:

<https://soc.up.edu.ph/18-piece/Book?ID=btw70-3428&title=dr-bill-bass-body-farm.pdf>

The N Word In Sign Language

N,N*,Z,Q,R,C

Aug 22, 2013 · N, N^*, Z, Q, R, C 1 N^2 0 $N+$...

win11□□□□□□*fps?* - □□

Windows 11 FPS

fm,pm,nm,um,mm,cm,m ...

fm,pm,nm,um,mm,cm,mfm,pm_ ...

fm,pm,nm,um,mm,cm,mfm,pm1um=1000nm 1nm)=1000 (pm) 1 (pm)=1000 (fm) (Mm) (km) ...

nadjvtvipreppronadv_ ...

Jul 5, 2012 · n = noun adj = adjective vt = transitive verb vi = intransitive verb prep = ...

N.W.G.W_

N.W. 38 000 kg N.W. ...

2025 7 RTX 5060

Jun 30, 2025 · 5070/9070 50704070S50N 9070 ...

Explore the significance of 'the N word in sign language' and its cultural implications. Discover how sign language shapes communication and promotes understanding.

[Back to Home](#)